



Model#: SC-603

360° HDTV Digital Amplified Motorized Rotating Antenna

USER GUIDE

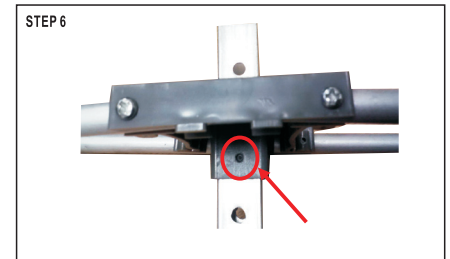
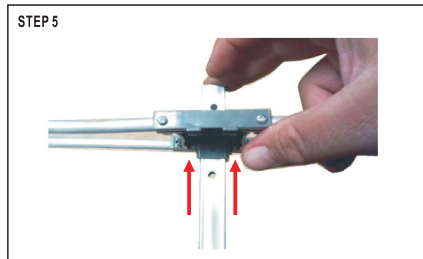
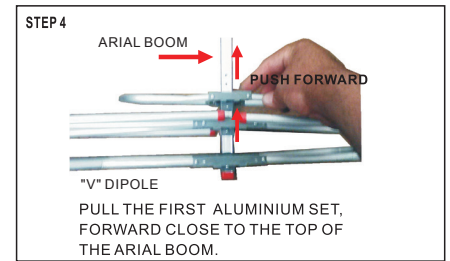
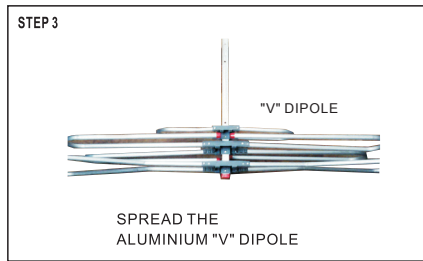
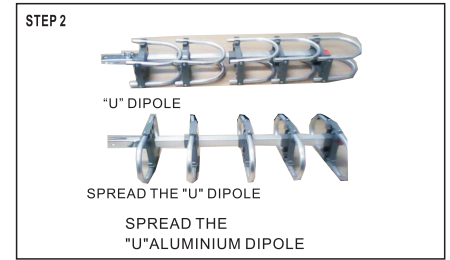
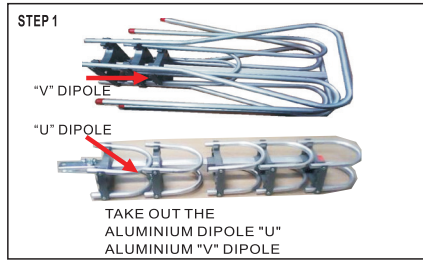
Specifications

- + Operation Frequency: 45 - 860MHz
- + Gain: 25 - 35dB
- + Standing Wave Ratio: < 1.5
- + Noise Parameter: < 2dB
- + Impedence: 75 Ω
- + Operation Voltage: AC110V ± 10% 60Hz
- + Power: < 3W
- + Rotating Speed: 4r / minute

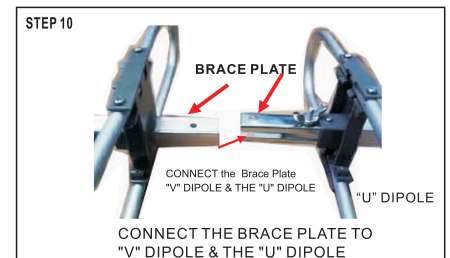
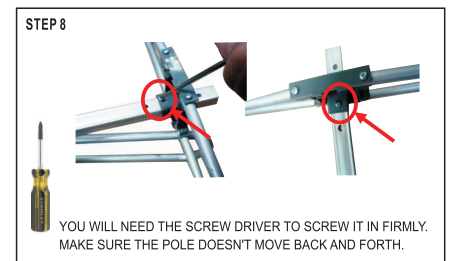
Set-Up Guide (after last installation step)

1. Make sure the antenna has been assembled according to the Figures to the right. Receiver connects to antenna.
2. After connecting the antenna to power, please press the revolving button on the remote control. The antenna will begin revolving. Please continue revolving the antenna until the TV program reaches the best signal quality.
3. Turn off the power after you've found the best antenna position.

Copyright ©2015 Supersonic Inc. All rights reserved.
 Features and specifications are subject to change without prior notification
 Prop 65 Warning: This product may contain chemicals known to the State of California to cause cancer and birth defects or other reproductive harm.



STEP 5 and STEP 6 ALIGN THE "V" DIPOLE TO THE PROPER SIZE HOLE DESTINATION.



STEP 11

"U" DIPOLE
APPLY WING NUT
M4x25mm Screws
"U" DIPOLE

APPLY THE M4x25mm Screws and the "Wing Nut" onto the "U" Dipole. Tight it firmly.

STEP 12

Brace Plate and wing nut connection
"V" DIPOLE
"U" DIPOLE

Now you can connect both Dipoles together

STEP 21

Turn the rotor upside down and unscrew the M3X14 screws.

STEP 22

Aluminium Line
M3X14 Screws

Set the Aluminium Line and screw firmly with the M3X14 Screws back in.

STEP 13

Pin

Take the Rotor out the box and place it In this direction where the small pin is on your left side.

STEP 14

Place the "Whole Antenna" on Top of the roter and hold it firmly.

STEP 23

"V" DIPOLE
M3X14 Screws

Do the same on the other side, Set the Aluminium Line and screw firmly with the M3X14 Screws

STEP 15

Aerial boom
"U" DIPOLE

Position the Whole Antenna In this direction, make sure you place it on the matching holes on top of the Roter..

STEP 16

"U" DIPOLE
place screw in this direction

Align and place the Dipole antenna on the top of the roter, make sure you press down firmly to add the screws underneath from the roter to the Dipole.

STEP 24

STEP 17

wing nuts

Apply wing nut, do not tight it too much. Leave it a bit loose to apply the the other wing nut on your left hand side.

STEP 18

"V" DIPOLE
place screw in this direction

Place the screw in this direction, make sure you align the pole correctly.

STEP 25

Connect To Main TV
connect to another TV

Make sure to connect it exactly as the figures show. On your main TV, scan for channels. Make sure the signal type is AIR/CABLE depending on your connection type.

STEP 19

wing nuts

Put the screw first, then apply the Wing Nut . Make sure you rotate the screw with a Phillips screw driver. You will not be able to rotate the wing nut.

STEP 20

wing nuts

Tight both wing nuts firmly, do not apply too much pressure.

Mount Antenna Outdoor on High Ground

After you have assembled the antenna, place the antenna on a pole or stand as high as possible with enough clearance so the antenna can rotate safely. Run the antenna cable to your home/office, then install it to the device antenna control box.

Last Installation Step

Make sure to connect it exactly as the figures show. On your main TV, scan for channels. Make sure the signal type is AIR/CABLE depending on your connection type.