



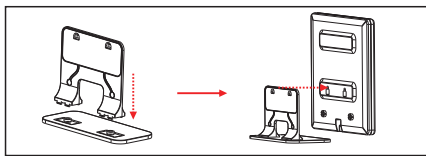
# SC-611 HIGH DIGITAL TV ANTENNA USER GUIDE

The SC-611 antennas are high definition TV receiving antennas that can receive HDTV, SDTV, RCA's DTTV and analog TV signals. SC-611 is designed for the most elegant and the most clear definition picture, and it is easy to assemble and use. Before using, please take out all the parts from the box and read this manual.

## 1. Assembling the antenna

◆ Take out all the parts from the box, and assemble according to picture 1.

**Note:** The cable not under the bracket or put beside but across by the bracket.



picture 1

**Note:** You can choose 2 different using patterns according to the signal strength where you use the product:

**Non- amplifying Signal Mode:** When the signal where you are is strong, connect the antenna to TV set directly.

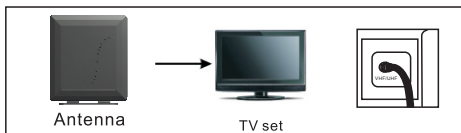
**Amplifying Signal Mode:** When the signal is low or never received if you choose Non- Amplifying Signal mode, please choose Amplifying Signal Mode.

◆ SC-611 Connection for Non- amplifying Signal Mode:

Connecting antenna to TV set directly.

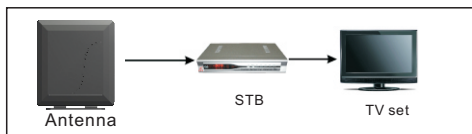
① Antenna connected to the TV via power injector.

Insert the Antenna output cable connector into the TV antenna input directly. (Shown in picture 2)



picture 2 Connection of antenna and TV

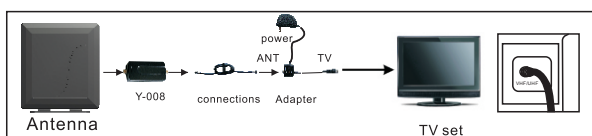
② Connect the antenna to STB then to TV. (Shown in picture 3)



Picture 3 Connection of Antenna and STB + TV

◆ SC-611 Connection for Amplifying Signal Mode.

① Connect correspondingly the antenna output cable connector to the IN port of amplifier, then use cable to connect amplifier output to power injector, and connect adapter's output cable to TV input set. (Shown in the picture 4)

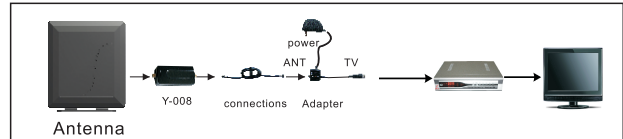


Picture 4 Antenna connected to TV set via amplifier

② Another way: Connecting the antenna to amplifier then to STB via connections and adapter then to TV set

Antenna connected to STB(Set-Top-Box) via power injector, then to TV. First, please correspondingly connect the antenna output cable to the

power injector. Then connector TV output on the power injector to TV input of STB. After that, connect the output cable on the STB to the input of TV. Meanwhile plug the power adaptor to the socket for power supply. (Shown in picture 5)

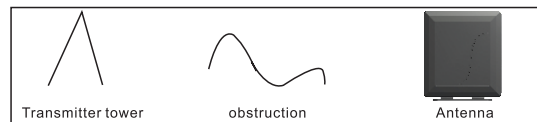


Picture 5 Antenna connected to STB via amplifier then to TV set

## 2. Finding the best location for the antenna

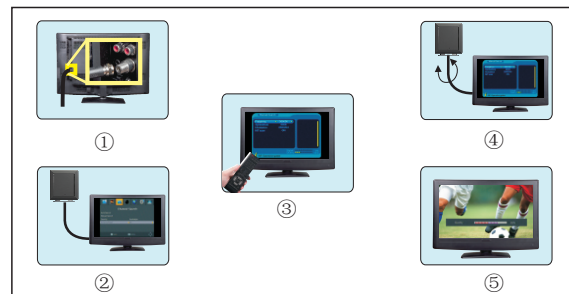
Before connecting the antenna, determine the best spot for optimum reception. Try as much as possible to avoid obstructions between transmitters and the antenna. (Shown in the picture 6)

**Note:** Generally speaking, the best location for the antenna is close to a window.



Picture 6 Location of Antenna

Process for adjusting the direction of the antenna



Picture 7 Adjustment of Antenna directions

① Connect the antenna to TV properly.

② Set TV or STB to Antenna mode.

③ When the signal quality is low, adjust the location of the antenna or rotate it towards television station.

④ You can watch the clear TV program until the signal quality gets improved.

## Troubleshooting

**I have my TV in a metal cabinet. Will the antenna work for me?**

Any large metal objects will prevent antenna signal from receiving the antenna. You must place the antenna outside or above the metal cabinet.

**Can I use the antenna in basement?**

TV signals usually cannot penetrate into basement locations due to their lower elevation.

**Please Note:** Other variables, which are not related to antenna performance, can effect your reception. These include distance from the source transmitting the desired station, and man-made and natural conditions. Example: Obstacles such as buildings between the transmitting source and your antenna.

**WARNING:** This product can expose you to chemicals including lead, which is known to the State of California to cause cancer, birth defects and/or reproductive harm. For more information, go to [www.P65Warnings.ca.gov](http://www.P65Warnings.ca.gov).