



.....

## **zūmo<sup>®</sup> XT** all-terrain motorcycle navigator

**NEW PRODUCT ANNOUNCEMENT**

OVERVIEW | FEATURES | CONFIGURATIONS  
SPECIFICATIONS | MERCHANDISING | ACCESSORIES

.....

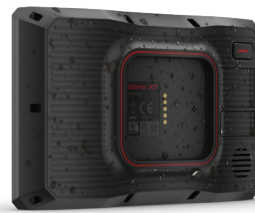
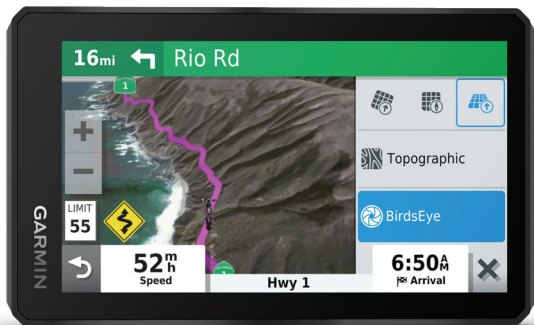
### **MARKETING MEMO**

March 4, 2020



**PRODUCT OVERVIEW:**

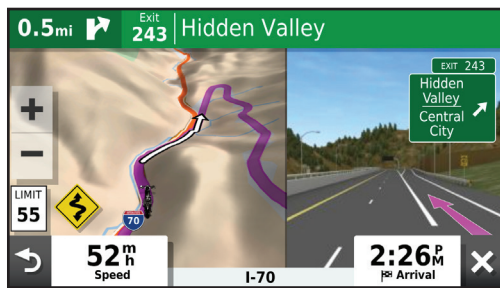
The rugged zūmo® XT all-terrain motorcycle navigator is built for adventure. Its ultrabright 5.5" display is glove-friendly and rain-resistant. It can withstand all kinds of weather, extreme temperatures and vibrations. Get adventurous routes with turn-by-turn directions for on-road navigation and topographic or BirdsEye Satellite Imagery for off-road guidance — no subscription needed. Rider alerts help prepare you for sharp curves and railroad crossings. Easily manage and review routes, tracks and waypoints across your navigator, smartphone and computer using Garmin Explore™. Pair with a compatible inReach® satellite communicator (sold separately) for interactive SOS, two-way messaging and location sharing.



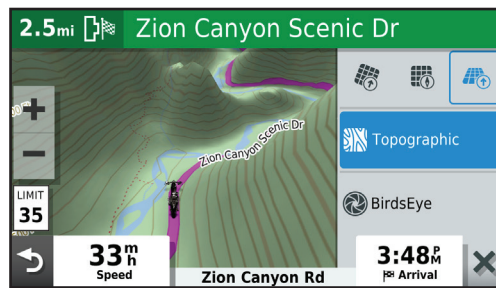
KEY FEATURES:

<b>NEW</b>	<b>5.5" ULTRABRIGHT DISPLAY</b>	Glove-friendly, ultrabright 5.5-inch display with crisp HD resolution can be mounted in landscape or portrait view; designed to withstand weather (IPX7) and rough terrain.
<b>NEW</b>	<b>ON- AND OFF-ROAD MAPS</b>	Easily switch between spoken turn-by-turn directions for streets in North America, preloaded topographic maps for North and Central America and global BirdsEye Satellite Imagery, so you can always have the perfect map for your ride. Map updates included.
<b>NEW</b>	<b>BIRDSEYE SATELLITE IMAGERY</b>	Access global BirdsEye Satellite Imagery with direct-to-device downloads via Wi-Fi <sup>®</sup> and no annual subscription.
<b>NEW</b>	<b>EASILY MANAGE YOUR ROUTES</b>	Manage and review your routes, tracks and waypoints across your zūmo XT <sup>1</sup> , smartphone and computer using Garmin Explore <sup>™</sup> .
<b>NEW</b>	<b>SIGHT-SEEING MADE EASY</b>	Preloaded TripAdvisor <sup>®</sup> traveler ratings, a HISTORY <sup>®</sup> database of notable sites, iOverlander <sup>™</sup> points of interest, Ultimate Public Campgrounds, U.S. National Parks and Foursquare <sup>®</sup> content for millions of new and popular places.
<b>NEW</b>	<b>TRACK RECORDER</b>	Records your route to save and share for future adventures.
<b>NEW</b>	<b>WORKS WITH INREACH<sup>®</sup></b>	Pair zūmo XT with a compatible <sup>2</sup> Garmin inReach Satellite Communicator (sold separately) for two-way texting, location sharing and SOS.
	<b>SHARE YOUR FAVORITE RIDES</b>	Easily send <sup>1</sup> GPX files from your phone to zūmo XT.
	<b>GARMIN ADVENTUROUS ROUTING<sup>™</sup></b>	Adventurous routing options find curvy and hilly routes for a more thrilling ride.
	<b>MUSIC PLAYER</b>	Stream and control music <sup>3</sup> from your smartphone through zūmo XT or play MP3 files stored on your zūmo XT.
	<b>RIDER SAFETY FEATURES</b>	Rider alerts for upcoming potential hazards <sup>4</sup> such as sharp curves, BLUETOOTH <sup>®</sup> hands-free calling <sup>4</sup> and Automatic Incident Notifications which text your location to a loved one if an incident occurs.
	<b>LIVE TRAFFIC, WEATHER AND MORE</b>	Access live <sup>6</sup> traffic and weather, share routes with other riders, and get smartphone notifications when you pair zūmo XT with your smartphone using the Garmin Drive <sup>™</sup> app.

TURN-BY-TURN STREET DIRECTIONS



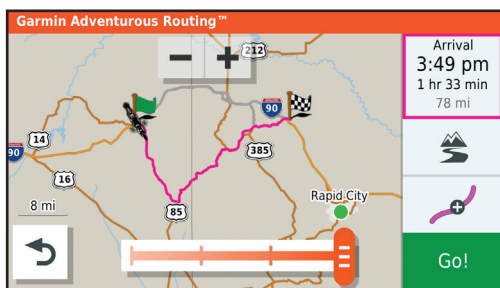
PRELOADED TOPOGRAPHIC MAPS



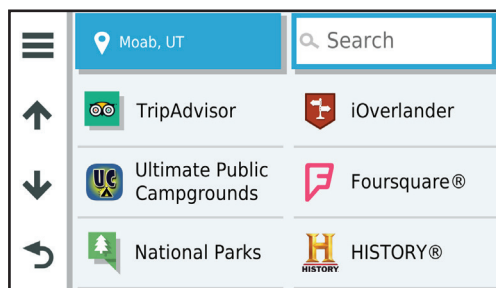
BIRDSEYE SATELLITE IMAGERY



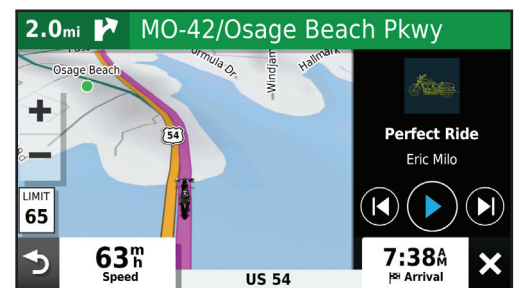
GARMIN ADVENTUROUS ROUTING<sup>™</sup>



SIGHT-SEEING MADE EASY



MUSIC PLAYER




PRODUCT COMPARISON:



	zūmo 396	zūmo 595	zūmo XT
Display Size	4.3"	5.0"	5.5"
Display Resolution	480 x 272 WQVGA	800 x 480 WVGA	1280 x 720 HD
Display Brightness	~700 nits	~250 nits, transfective	~1000 nits
Battery Life	Up to 4 hours	Up to 4 hours	Up to 6 hours (3.5 hours at 100% backlight)
Display Type	Resistive	Resistive	Capacitive
Display Orientation	Landscape	Landscape or portrait	Landscape or portrait
Device Size	4.9" x 3.4" x 0.9" (12.5 x 8.6 x 2.5 cm)	5.9" x 3.9" x 1.3" (14.9 x 9.7 x 3.3 cm)	5.8" x 3.5" x 0.9" (14.8 x 8.8 x 2.4 cm)
Weight	8.5 oz (241.1 g)	13.2 oz (374.5 g)	9.6 oz (272.0 g)
Rugged and Rain-Resistant	IPX7	IPX7	IPX7
Preloaded Topographic Maps			•
Access to BirdsEye Satellite Imagery			•
Manage routes, tracks and waypoints using Garmin Explore™ <sup>1</sup>			•
Pairs with inReach® Satellite Communicator <sup>2</sup>			•
National Park Directory (U.S. Only)			•
HISTORY database of notable sites (U.S. Only)			•
Ultimate public campgrounds (U.S. Only)			•
iOverlander Points of Interest			•
Track Recorder			•
TripAdvisor Traveler Ratings	•		•
Built-in Wi-Fi® for easy updates without a computer	•		•
Automatic Incident Notification	•		•
Share favorite routes (export & import GPX files) <sup>1</sup>	•		•
Garmin Real Directions™ spoken landmark guidance	•	•	•
Foursquare Content Featuring Millions of Points of Interest	•	•	•
Lane Assist	•	•	•
Easy Route Shaping (route through preferred roads/cities)	•	•	•
Rider Alerts (sharp curves, speed changes, etc.)	•	•	•
Helmet Laws by state (U.S. only)	•	•	•
Red Light Cameras & Speed Cameras <sup>5</sup>	•	•	•
Garmin Adventurous Routing	•	•	•
BLUETOOTH Hands-Free Calling <sup>4</sup>	•	•	•
Music Player/MP3 Player <sup>3</sup>	•	•	•
Spoken directions heard in helmet <sup>4</sup>	•	•	•
Shows 3D Terrain		•	•
Receive Smartphone Notifications <sup>6</sup>	via Smartphone Link app	via Smartphone Link app	via Garmin Drive app
Access to Live Traffic and Weather <sup>6</sup>	via Smartphone Link app	via Smartphone Link app	via Garmin Drive app

PRODUCT CONFIGURATIONS:

zūmo XT	AVAILABLE	INCLUDES			COUNTRY OF ORIGIN
	March 2020	zūmo XT, motorcycle mount and hardware, motorcycle power cable, USB cable, documentation			Made in Taiwan.
	SKU	UPC	MRP (USD)	MRP (CAD)	SCHEDULE B: 8526910070
	010-02296-00	753759256333	\$499.99	\$679.99	HTS: 8526.91.0040

SPECIFICATIONS:



Gift box dimensions (WxHxD):	7.5" x 5.8" x 4.5" (19.1 x 14.7 x 11.4 cm)
Gift box weight:	1.9 lb (856 g)
Master carton dimensions (WxHxD):	23.6" x 9.6" x 8.3" (60 x 24.4 x 21.1 cm)
Master carton weight:	18.9 lbs (8.6 kg)
Master carton quantity:	8

DUMMY UNIT:



M08-02296-00

PRODUCT COPY:

Product copy can be downloaded from the [Dealer Resource Center](#).

VIDEOS:

Feature and benefit video can be viewed [here](#).

MERCHANDISING:

Garmin branded gray countertop video display

Order these components to build your Garmin branded gray countertop video display: dummy units, brackets, SD™ card, product card and graphics. You can also order these components to update your existing countertop display. Contact your inside sales rep or order administration representative to place an order for the components or full display if you meet the order requirements.

Countertop Display Dimensions: 12" W x 17.75" T x 14" D



COMPATIBLE ACCESSORY OVERVIEW:

CARRYING CASE

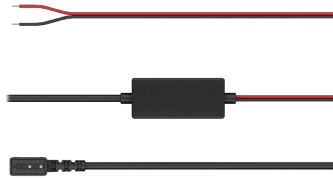


SKU: 010-12953-02  
UPC: 753759257446

Protect zūmo when you're not out cruising the open roads. Built to endure the elements for the long haul.

MSRP: \$24.99

MOTORCYCLE WIRING HARNESS



SKU: 010-12953-03  
UPC: 753759257453

Use this power/ground cable in conjunction with a mount bracket (sold separately) to attach your zūmo to your motorcycle.

MSRP: \$39.99

MOTORCYCLE MOUNT BRACKET



SKU: 010-12953-00  
UPC: 753759256524

Mount your zūmo XT to your motorcycle with this bracket that attaches to the bike's handlebars using a RAM mount (sold separately).

MSRP: \$19.99

AUTOMOTIVE MOUNT KIT



SKU: 010-12953-01  
UPC: 753759256531

For automotive use, use this kit to mount zūmo XT on your windshield or any smooth, flat surface. Includes suction cup mount, bracket and vehicle power cable.

MSRP: \$49.99

HANDLEBAR MOUNT KIT



SKU: 010-10962-10  
UPC: 753759162832

Mount your compatible motorcycle device just about anywhere with our mounting kit (mounting bracket sold separately).

MSRP: \$59.99

Additional accessories available at [Garmin.com](http://Garmin.com).

<sup>1</sup> Requires zūmo to be paired with your Bluetooth-enabled smartphone. May require use of the Garmin Drive app. Learn more at [garmin.com](http://garmin.com).  
<sup>2</sup> Active satellite subscription required for inReach device (sold separately). Visit [garmin.com](http://garmin.com) for compatibility information.  
<sup>3</sup> Music and media control work with iPhone® 4 or later, some iPod® devices and some Android™ devices.  
<sup>4</sup> Requires Bluetooth-compatible helmet, headset or smartphone; sold separately.  
<sup>5</sup> Red light and speed camera warnings are not available in all regions.  
<sup>6</sup> Access to real-time data requires zūmo to be paired with your smartphone running the Garmin Drive app. Learn more at [garmin.com/driveapp](http://garmin.com/driveapp).

© HERE. All rights reserved. ©2020 TripAdvisor LLC. All rights reserved. foursquare® and the foursquare® logos are registered trademarks of Foursquare Labs, Inc. All rights reserved. The HISTORY and the "H" logo are registered trademarks of A&E Television Networks, LLC protected in the United States and other countries around the world. Satellite Imagery © Maxar Technologies. The Bluetooth® word mark and logos are owned by the Bluetooth SIG, Inc. and any use of such marks by Garmin is under license. Wi-Fi® and the Wi-Fi logo are registered trademarks of Wi-Fi Alliance.