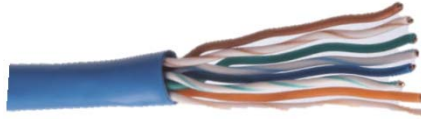


CAT5e Modular Plug Termination Instructions



1) Score and remove 1" of outer jacket. Do not nick inner conductors with blade.



2) Untwist pairs, straighten wires, and place in 568A or 568B order.



3) Use scissors to trim conductors to 1/2" minimum (5/8" maximum) for best performance.



4) Insert cable into plug ensuring conductors are inserted to the end of the connector.



5) Terminate the plug with a modular plug crimper. Use the RJ45 8-position 8-contact cavity.



6) Verify correct wiring and termination with a wiremap tester.

