



ELECTRIC WINE BOTTLE OPENER
ABRIDOR ELÉCTRICO DE BOTELLAS DE VINO

Model No.: WA-2001S (Accessories Included) and WA-2002S



Operating and Safety Instructions

HOUSEHOLD USE ONLY

Instrucciones de Operación y Seguridad

SOLO PARA USO DOMESTICO



IMPORTANT SAFEGUARDS

When using this or any other small appliance, always follow these basic safety precautions, especially when children are present.

READ ALL INSTRUCTIONS BEFORE USE

⚠ WARNING-To reduce the risk of, serious personal injury and property damage please note the following:

- This appliance is not intended for use by persons (including children) with reduced physical, sensory, or mental capabilities, or lack of experience and knowledge, unless they are closely supervised and instructed concerning use of the appliance by a person responsible for their safety. Close supervision is necessary when any appliance is used by or near children. Children should be supervised to ensure that they do not play with the product.
- Use this product to open new bottles of wine only.
- Hold product on one side of the body and firmly grasp the transparent cover when using this product to avoid injury.
- Do not aim product at face, other body parts, or any other living organism.
- Do not immerse or expose the body of this appliance in water or other liquids.
- Only use attachments recommended, provided, or sold by the product manufacturer.
- Do not place appliance on or near a hot gas or electric burner, in a heated oven, or other heated surfaces.
- Do not operate the appliance if it malfunctions, if it is dropped or damaged, or if the motor housing is dropped in or exposed to water.
- This product has no user-serviceable parts. Do not attempt to examine or repair this product yourself. Please review the Warranty Policy on Page 4.

SPECIFICATIONS AND OPERATION INSTRUCTIONS:

Model No.: WA-2001S (ONLY) Wine Accessories Usage

1. Foil Cutter - Place the foil cutter horizontally over the foil at the top of the wine bottle; pinch the foil cutter with one hand and rotate bottle 360° with the other to completely cut the foil.
2. Wine Aerator Pourer – Firmly insert the wine pourer into the bottle to avoid spills or leaks when pouring.
3. Vacuum Wine Stopper – Clean the stopper and insert it into the bottle; push and pull the pole until the air in the bottle is fully released and the pole rebounds automatically.



Foil Cutter

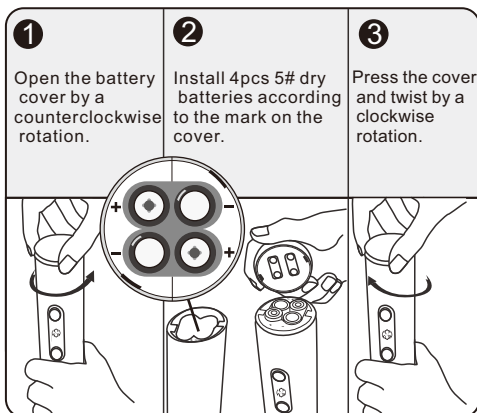
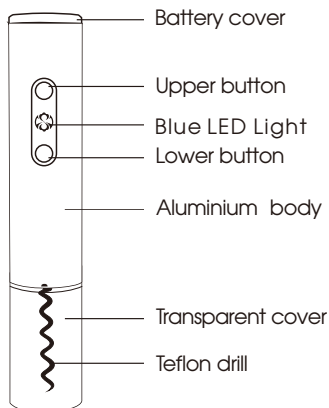


Wine Pourer



Vacuum Wine Stopper



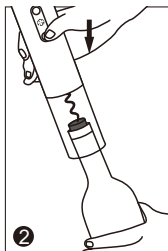


Operating Instructions

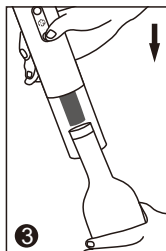
Batteries Switching



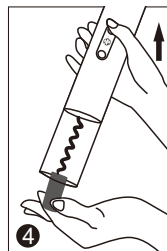
1. Put the foil cutter vertically on the neck of wine bottle and rotate around it to remove the tinfoil.



2. Put the opener over the wine bottle and make sure the drill pointing at the center of the cork.




3. Hold the bottle tightly and keep pressing the lower button until the cork is automatically removed from the bottle



4. Press the upper button to take the cork out of the drill.

**SAVE THESE INSTRUCTIONS
FOR FUTURE REFERENCE**

ONE YEAR LIMITED WARRANTY


 Write down the following information about your appliance to better help you obtain assistance or service if you ever need it.

CUSTOMER RECORD

Date of Purchase _____ Store/Dealer _____


Model/Item No: _____


THIS WARRANTY APPLIES TO PRODUCTS PURCHASED AND USED IN THE U.S. ONLY. This is the only express warranty for this product and is in lieu of any other warranty or condition. This product is warranted to be free from defects in material and workmanship for a period of one (1) year from the date of original purchase. During this period, your exclusive remedy is repair or replacement of this product, at our option; however, you are responsible for all costs associated with returning the product to us and our returning a product or component under this warranty to you. If the product or component is no longer available, we will replace with a similar one of equal or greater value. This warranty does not cover glass, filters, wear from normal use, use not in conformity with the printed directions, or damage to the product resulting from accident, alteration, abuse, or misuse.


 **THIS WARRANTY EXTENDS ONLY TO THE ORIGINAL CONSUMER PURCHASER. KEEP THE ORIGINAL SALES RECEIPT, AS PROOF OF PURCHASE IS REQUIRED TO MAKE A WARRANTY CLAIM.**


This warranty is void if the product is used for other than single-family household use or subjected to any voltage and waveform other than what is specified on the rating label (E.G., 120V~60Hz). We exclude all claims for special, incidental, and consequential damages caused by breach of express or implied warranty. All liability is limited to the amount of the purchase price. Every implied warranty, including any statutory warranty or condition of merchantability or fitness for a particular purpose, is disclaimed except to the extent prohibited by law, in which case such warranty or condition is limited to the duration of this written warranty. This warranty gives you specific legal rights. You may have other legal rights that vary depending on where you live. Some states do not allow limitations on implied warranties or special, incidental, or consequential damages, so the foregoing limitations may not apply to you. To make a warranty claim do not return this appliance to the store.

TO OBTAIN WARRANTY SERVICE AND/OR TROUBLESHOOTING INFORMATION:

 Call Customer Service at 1-888-903-0060 in the U.S.

 Monday through Friday: 9:00am – 5:00pm PST.

 Email at info@brentwoodus.com

 Go online at www.brentwoodus.com



MEDIDAS DE SEGURIDAD IMPORTANTES

Al usar este o cualquier otro electrodoméstico, siga las precauciones básicas de seguridad, especialmente cuando niños estén presentes.

LEA TODAS LAS INSTRUCCIONES ANTES DE USAR

▲ ADVERTENCIA-Para reducir el riesgo de incendio, descarga eléctrica, lesiones personales graves y daños a la propiedad, por favor tenga en cuenta lo siguiente:

- Este equipo no está destinado a ser utilizado por personas (incluyendo los niños) con capacidades físicas, sensoriales o mentales reducidas, o que carezcan de experiencia y conocimientos, a menos que sean supervisados de cerca e instruidos en su uso por una persona responsable de su seguridad. Se requiere una estrecha supervisión cuando el dispositivo es utilizado por niños o en las inmediaciones. Los niños deben ser supervisados para asegurarse de que no estén jugando con el producto.
- Utilice este producto sólo para abrir botellas de vino nuevas.
- Sujete el producto por un lado del cuerpo y sujete firmemente la cubierta transparente cuando utilice este producto para evitar lesiones.
- No apunte a la cara, a otras partes del cuerpo ni a ningún otro organismo vivo.
- No sumerja ni exponga el cuerpo del dispositivo en agua u otros líquidos.
- No utilice accesorios no recomendados o vendidos por el fabricante.
- No coloque el aparato sobre o cerca de un quemador eléctrico o de gas caliente, en un horno caliente o en cualquier otra superficie caliente.
- No utilice la unidad si funciona mal, se cae o se daña, o si el alojamiento del motor se ha caído o ha estado expuesto al agua.
- Este producto no contiene piezas que puedan ser reparadas por el usuario. No intente examinar o reparar este producto usted mismo. Consulte la póliza de garantía en la página 4.

ESPECIFICACIONES E INSTRUCCIONES DE OPERACIÓN:

Model No.: WA-2001S (SOLAMENTE) - Uso de los Accesorios Para el Vino

1. Cortador de Cápsulas - Coloque el cortador de cápsulas horizontalmente sobre la parte superior de la botella de vino, exprímalo y gírelo para quitar la parte superior de la lámina.
2. Vertedor de Aireador de Vino - Inserte firmemente el vertedor de vino en la botella para evitar derrames o fugas durante el vaciado.
3. Tapón de vacío para vino - Limpie el tapón e introdúzcalo en la botella; empuje y tire del poste hasta que el aire de la botella se haya liberado completamente y el poste rebote automáticamente.



Cortador de Láminas

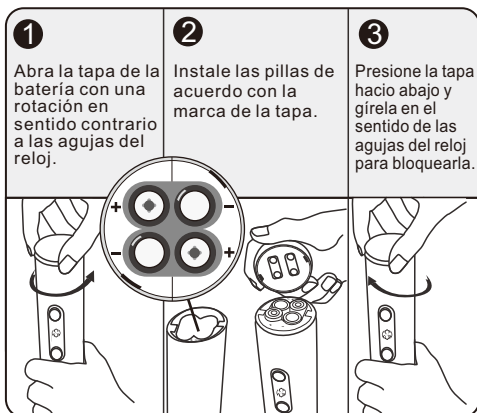
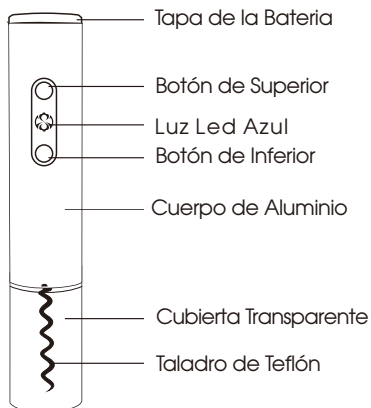


Vertedor de Vino



Tapón de vacío para vino



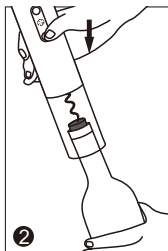


Instrucciones de Uso

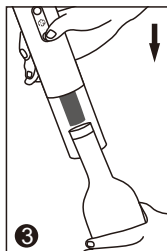
Comutación de Baterías



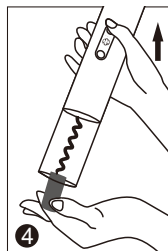
1. Ponga el cortador de cápsulas verticalmente en el cuello de la botella de vino y gírela alrededor para quitar el papel de aluminio.



2. Coloque el abridor sobre la botella de vino y asegúrese de que el taladro apunte hacia el centro del corcho.



3. Sostenga al botella firmemente y mantenga presionado el botón inferior hasta que el corcho se retire automáticamente de la botella.



4. Presione el botón superior para sacar el corcho de la broca.

**GUARDE ESTAS INSTRUCCIONES
COMO REFERENCIA**