

RtR Speaker Systems are designed to the highest possible value and performance standards. Our confidence in their quality is such that B-I-C America offers customers this transferable limited warranty:

RtR Speaker Systems Limited Warranty

If the RtR speaker system proves to be defective in materials or workmanship within five years from the date of the original customer's purchase, we will, at our option, repair or replace the defective product.

DISCLAIMER

THE WARRANTY STATED HEREIN IS IN LIEU OF ALL OTHER WARRANTIES, EXPRESS OR IMPLIED, INCLUDING MERCHANTABILITY AND FITNESS FOR PARTICULAR PURPOSE AND ALL OTHER LIABILITIES AND OBLIGATIONS OF B-I-C AMERICA, ALL OF WHICH ARE EXPRESSLY DISCLAIMED. B-I-C AMERICA HAS NOT MADE AND DOES NOT HEREBY MAKE ANY OTHER REPRESENTATION, WARRANTY OR COVENANT WITH RESPECT TO THE CONDITION, QUALITY, DURABILITY, DESIGN, OPERATION, CAPACITY, FITNESS FOR USE OR SUITABILITY OF THE RTR SPEAKER SYSTEMS.

Limitation of Implied Warranties

Any implied warranties, including warranties of merchantability and fitness for a particular purpose, are limited in duration to the length of this warranty.

Exclusion of Certain Damages

B-I-C America's liability for any defective product is limited to repair or replacement of the product at our option. B-I-C America shall not be liable for incidental or consequential damages of any kind or character because of product defects.

Some states do not allow limitations on implied warranties and/or do not allow the exclusion or limitation of incidental or consequential damages, so the above limitations and exclusions may not apply.

This Warranty Does Not Cover:

Damage caused by abuse, accident, misuse, negligence, or improper operation.

Products that have been altered or modified.

Any product whose serial number has been altered, defaced, or removed.

Normal wear and maintenance.

Damages caused by shipping. (All claims for shipping damage must be made with the carrier.)

Warranty Service

Warranty service must be performed by an authorized service center, usually a B-I-C America speaker systems dealer or its authorized agent. You may obtain a list of authorized service centers by writing to the address on the back.

All warranty repairs must be accompanied by the original bill of sales. No other document is acceptable or is required.

This warranty gives you specific legal rights, and you may also have other rights which vary from state to state.

Due to our continual efforts to improve product quality as new technology and techniques become available, B-I-C America reserves the right to revise Speaker Systems specifications without notice.



B-I-C America
925 N. Shepard Street
Anaheim, CA 92806
www.bicamerica.com

For tech support call 1-877-558-4242 (4BIC)

B-I-C America is a licensed trademark
© 2013



a **B-I-C America**™ Company

OWNER'S MANUAL

Model RtR-EV15

Eviction Series 3-Way 15" Bi-ampable Floor Speaker w/High Frequency Horn

SPECIFICATIONS

Drivers

- High Excursion 15" Custom Eviction Series Woofer with High Power Magnet
- Sealed Back 5 1/4" Midrange
- High Efficiency Horn Tweeter Enables Extended Output to 116dB

Power Handling

430 Watts Peak, 225 Watts RMS

Frequency Response

24Hz - 20kHz ± 2dB

Sensitivity

95dB @ 2.83V/1 watt, 1 meter

Features

- Bi-ampable: 2 prs. Gold-Plated 5-Way Binding Posts w/Removable Connecting Straps
- Ported Enclosure

Finish

MDF Black Vinyl Cabinet

Dimensions

43" H x 17 1/2" W x 12 1/2" D

Limited Warranty

5 years parts and labor on drivers



Unpacking

Carefully remove your new RtR speakers from their boxes, avoiding staples which can cause damage to the cabinets. Inspect each speaker for transit damage. If you discover damage, contact your dealer immediately. Save your cartons – they are the best possible protection for your speakers should you ever have a need to move them.

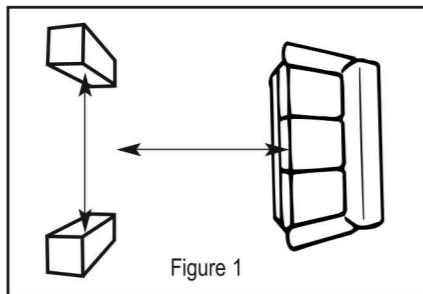
Positioning Your Speakers

The room that you choose to use as your Home Theater will add its own “sonic signature” to the sound of your system. In selecting a room and speaker position, it is important to remember the effect of furnishings, materials, and surfaces, and how room dimensions affect your speakers’ performance. Experimentation in speaker placement is necessary to choose the best arrangement for your optimum experience. Your RtR dealer may prove helpful in establishing a starting point by which to discover optimum placement. However, here are a few general rules to get you started.

Choice of room – if you have a choice as to which room in your home to use as the listening room, here are some things to look for:

- Rooms with varying wall lengths, non-parallel walls, uneven ceilings, and generally varying dimensions will usually produce a more even sound and offer a greater variety of choices for speaker placement.
- An even mixture of hard and soft surfaces will typically help neutralize the sound of the room. Soft surfaces such as stuffed furniture, heavy curtains, and carpet absorb higher frequencies while hard surfaces such as glass and hardwood floors tend to cause greater reverberation at the higher octaves.
- Solid wall construction and concrete floors provide the best vibration-free foundation for your system.

IMPORTANT HINT: Adjustments to the sound of your room can often be made very simply. Hanging pictures on a wall to create an uneven surface, drawing the drapes one way or the other, or moving a piece of furniture can often create the desired effect. Remember to experiment!



Note: The distance between yourself and the point directly between the speakers is slightly (roughly 20%) greater than the distance between the two speakers.

The Optimum Listening Position

Home Theater and music are great joys of life, particularly when enjoyed in the comfort of your own home. When choosing the location of your speakers, remember to base your decision around your favorite chair or most comfortable listening position. (See Figure 1).

The Distance Between Each Speaker

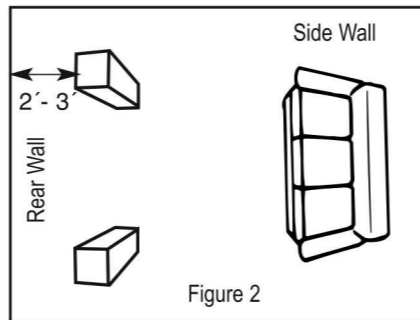
This part will require some experimentation and is somewhat dependent on the size of the listening area. However, as a general rule, the best results are usually attained when the speakers are 6 feet apart centered on your TV. In larger rooms, greater distance between the speakers is possible but may require angling in of the speakers for the maximum effect.

Distance Between the Speakers, the Rear Wall, and Side Wall

We have achieved optimum results throughout design phases, listening tests, and evaluation with the speaker 2 to 3 feet out from the rear wall (see Figure 2). Moving the speaker closer to the rear wall or a room corner will tend to “color” or enhance the lower frequencies. Placing the speaker closer to the rear wall will also tend to adversely affect the depth of the stereo image.

Hooking Up Your New Speakers

STOP! — Make sure that you consult your amplifier’s owner’s manual regarding speaker hook-up. Your amplifier should be turned off throughout this procedure.



Note: For best results, maintain a maximum distance away from the side wall consistent with speaker separation.

A word about speaker wire – There are a number of quality speaker wire products available today. Most of these products offer obvious cosmetic benefits over lamp cord and light gauge wires. RtR Speaker Systems come equipped with gold-plated binding posts to allow the greatest reliability and ease of wire hook-up. The choice of speaker wire is dependent on the type of amplifier, the distance you intend to run the wire, and your budget, among other things. If in doubt as to which brand or type of wire to use, consult your audio dealer.

Most speaker wire is polarity coded. This means that each conductor is chosen to be either (+) positive or (-) negative. The (+) positive side may be a different color or texture than the (-) negative side. On the back of your amplifier, each channel is probably labeled (+) and (-) as well as color coded red for (+) positive and black for (-) negative. RtR speaker terminals are color coded red for (+) positive and black for (-) negative. Be sure to hook (+) to (+), (red to red), and (-) to (-), (black to black). (See Figure 3.) All connections should be tight and close fitting. Inspect connections for frays and stray strands of wire touching both (+) and (-) terminals. (This will cause a short and, perhaps, damage your equipment.)

What Is Bi-amplification?

There are situations occasionally in which it may be useful to separate the woofer, with its crossover filter, from the midrange unit and tweeter section, and to drive them with separate amplifiers. One obvious case would be when the owner uses low-power

amplifiers. Another, far less common case, is the belief of an owner that the purity of the music is compromised when all frequencies pass through the same speaker cable.

The ability to bi-amplify is enabled by using two pairs of input terminals driving separate crossover sections, as diagrammed below:

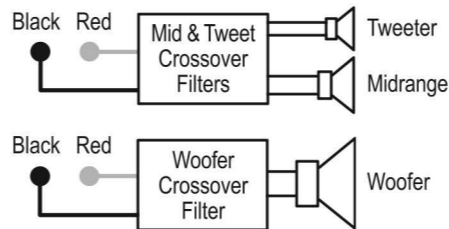


Figure 3

Virtually all modern receivers have adequate power to drive both input sections of the speaker without compromising loudness capability, particularly with the high-efficiency RtR-EV15. Such receivers also have very low output impedance so that there is no frequency interaction in speaker cables of appropriate thickness – 16 gauge is a safe value in normal installations. Accordingly, the RtR-EV15 is supplied with gold-plated connector links for use between the two pairs of input terminals, and a single receiver or amplifier drives both input sections in normal fashion.

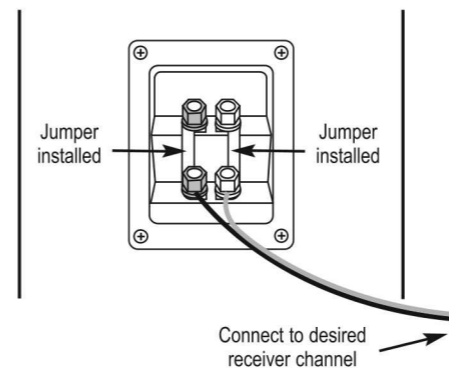
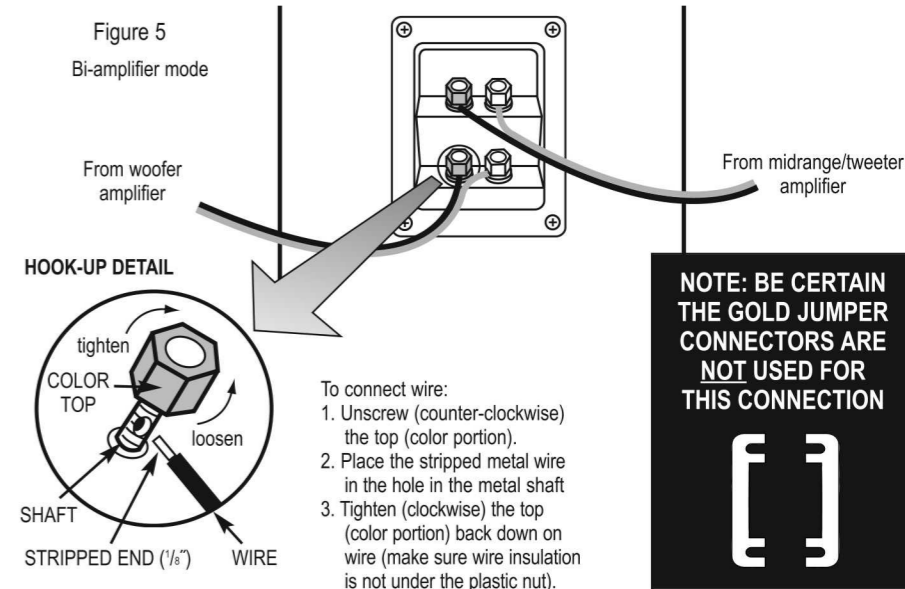


Figure 4

With single-amplifier drive, cable from receiver can be connected to either pair of input terminals.



In bi-amplifier mode, the connector straps are removed. One amplifier drives the lower pair of input terminals for the woofer, while another amplifier connected to the upper pair of terminals drives the midrange and tweeter section. Of course, attention must be paid to match the amplifiers in output amplitude and phase. Each amplifier can receive the full frequency range of input signal, because the crossover filters built into the RtR-EV15 will pass only the correct range to each individual speaker in the cabinet.

Caring for Your Speakers

RtR speaker cabinets are finished with a very high quality polymer laminate/lacquer covering that is both attractive and serves as excellent protection for the wood cabinet. The cabinet can be cleaned with a damp, soft cloth or you may use a high-quality furniture polish to maintain the original luster. Use a soft brush or hand vacuum cleaner on the grille material.

Troubleshooting and Service

RtR speakers do not use external fuse protection or circuit breakers because these devices tend to decrease sound quality and may only protect the speaker to a marginal degree. Rather, we use components and designs of the highest caliber as an effective

method of protecting the speaker. However, no amount of protection will prevent damage caused by defective associated equipment or extreme abuse.

If you have a problem, first try to determine if it is indeed a speaker problem. Determine whether the problem exists in both speakers. If it does, the problem likely originates in some other component in the system. If the problem is in one speaker only, reverse your speaker leads (left to right, right to left). If the problem moves to the other channel, your problem is not in the speakers.

Once you have determined that you have a speaker problem, contact your dealer for authorized factory service information. If you are unable to contact your dealer, if your dealer is unable to solve your problem, or if you have any questions or comments regarding your RtR Speaker System, please contact us at:



B-I-C America
925 N. Shepard Street
Anaheim, CA 92806
1-877-558-4242
for Tech Support.

Please describe the problem in detail. We will decide on the most appropriate course of action.