

# SC-612

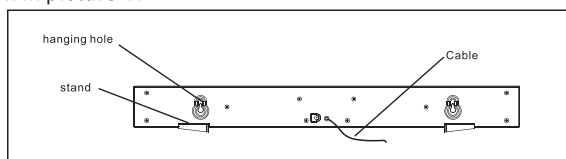
# Digital Flat Antenna USER GUIDE



The SC-612 antennas are High Definition TV receiving antennas that can receive HDTV, SDTV, RCA's DTTV and analog TV signals. SC-612 is designed for the most elegant and the most clear definition picture, and it is easy to assemble and use. Before using, please take out all the parts from the box and read this manual.

## 1. Assembling the antenna

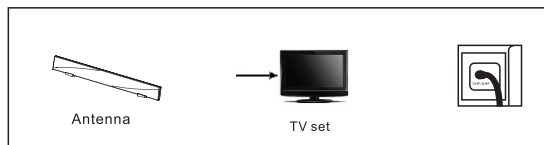
Take out all the parts from the box and assemble them as shown in picture 1.



picture 1

### ◆ Connecting the antenna to the TV

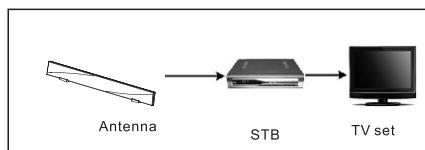
Insert the Antenna output cable connector into the TV antenna input directly. (Shown in picture 2)



Picture 2 Connection of Antenna and TV

## 2. Antenna connected to STB(Set-Top-Box) then to TV.

First, please correspondingly connect the antenna output cable to the antenna input socket of STB. And then, connect STB output cable to the antenna input of TV set. (Shown in picture 3)

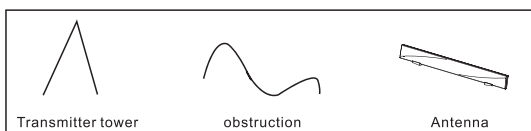


Picture 3 Connection of Antenna and STB + TV

## 3. Finding the best location for the antenna

Before connecting the antenna, determine the best spot for optimum reception. Try as much as possible to avoid obstructions between transmitters and the antenna. (Shown in the picture 4)

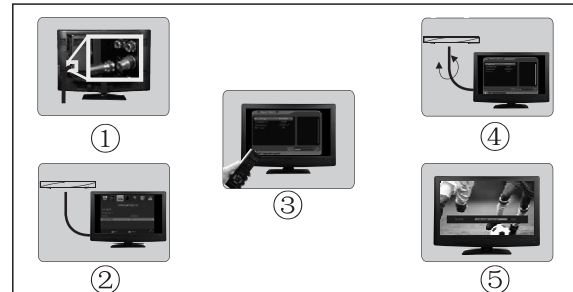
**Note:** Generally speaking, the best location for the antenna is close to a window.



Picture 4 Location of Antenna

continued

## 3. continued



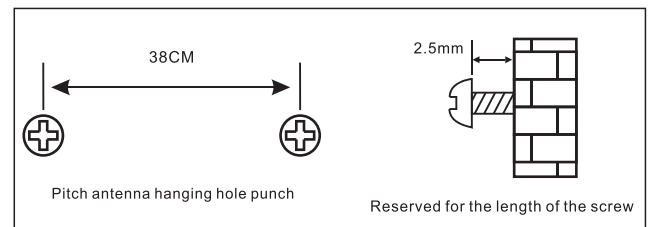
Picture 5 Adjustment of Antenna directions

- ① Connect the antenna to TV properly.
- ② Set TV or STB to Antenna mode.
- ③ When the signal quality is low, adjust the location of the antenna or rotate it towards television station.
- ④ You can watch the clear TV program until the signal quality gets improved.

## 4. Assembling the antenna

If you choose suspension mode to install, please do as the following steps (as shown in Picture 6):

- ① Drill two holes fitting plastic expansion screws in the wall.
- ② Put the plastic expansion screws into the holes, and wrest the screws into plastic expansion screws.
- ③ Hang the antenna onto the nut.



Picture 6

### Troubleshooting

#### I have my TV in a metal cabinet. Will the antenna work for me?

Any large metal objects will prevent antenna signal from receiving the antenna. You must place the antenna outside or above the metal cabinet.

#### Can I use the antenna in basement?

TV signals usually cannot penetrate into basement locations due to their lower elevation.

**Please Note:** Other variables, which are not related to antenna performance, can effect your reception. These include distance from the source transmitting the desired station, and man-made and natural conditions. Example: Obstacles such as buildings between the transmitting source and your antenna.