



.....

GPSMAP[®] 66i

GPS HANDHELD SATELLITE COMMUNICATOR WITH TOPO MAPPING

NEW PRODUCT ANNOUNCEMENT

**OVERVIEW | FEATURES | COMPARISON | CONFIGURATIONS
SPECIFICATIONS | MERCHANDISING | COMPATIBILITY**

.....

MARKETING MEMO

June 5, 2019



PRODUCT OVERVIEW:

Precise navigation meets global communication in the rugged GPSMAP 66i. Using inReach® technology, the button-operated GPS handheld and satellite communicator¹ lets you trigger an interactive SOS to GEOS and enables two-way messaging and location tracking via the 100% global Iridium® satellite network. Navigate confidently with preloaded TopoActive U.S. and Canada mapping, direct-to-device BirdsEye Satellite Imagery downloads, multiple Global Navigation Satellite Systems (GNSS) support and navigation sensors.



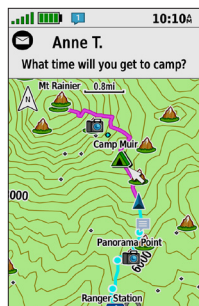
GPSMAP 66i



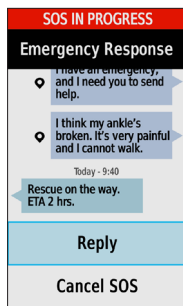
KEY FEATURES:

NEW	INTERACTIVE SOS	Trigger an interactive SOS to the GEOS 24/7 search and rescue monitoring center (satellite subscription required)
NEW	TWO-WAY MESSAGING	Two-way messaging via the 100% global Iridium® satellite network (satellite subscription required)
NEW	LIVETRACK FEATURE	Get live location sharing via the 100% global Iridium satellite network so you can stay in contact with loved ones, teammates, headquarters and more (satellite subscription required)
	WEATHER	Cellular connectivity provides access to Active Weather for up-to-date forecasts, including predictive maps for temperature, wind, precipitation and clouds
	SEE WHERE YOU'RE HEADED	Preloaded TopoActive U.S. and Canada mapping with direct-to-device BirdsEye Satellite Imagery downloads (no annual subscription)
	MULTI-GNSS SUPPORT	Includes multiple GNSS support and navigation sensors
	LARGE COLOR DISPLAY	Large 3" sunlight-readable color display for easy viewing
	GARMIN EXPLORE™	Compatible with the Garmin Explore website and app to help you manage waypoints, routes, activities and collections, use tracks and review trip data from the field
	WIKILOC	Preloaded with the Wikiloc app with risk-free trial offering more than 9 million trails for download
	UTILITY IN ADVERSE ENVIRONMENTS	Provides an LED flashlight and SOS beacon that can be used to signal for help; built to military standards for thermal, shock and water performance (MIL-STD-810G), and it's even compatible with night vision goggles
	BATTERY PERFORMANCE	Internal, rechargeable lithium battery provides up to 35 hours of battery life at 10-minute tracking mode (default) and 200 hours at 30-minute tracking (Expedition) mode
	NAVIGATION SENSORS	Three-axis tilt-compensated electronic compass with accelerometer and barometric altimeter sensors
	EXPANDABLE MEMORY	16 GB of built-in memory can be expanded with a microSD™ card (sold separately) for optional mapping and data storage
	WATER RATING	Rugged, impact resistant and water-rated to IPX7 ²

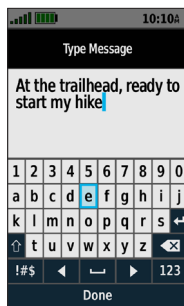
TOPO MAP PAGE AND INCOMING MESSAGE



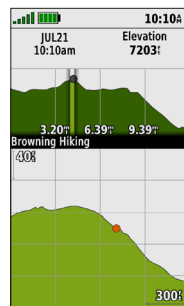
SOS DIALOGUE



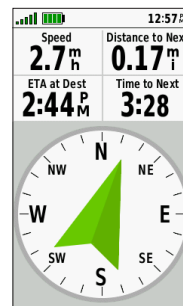
TEXT MESSAGING



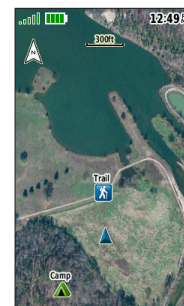
BAROMETRIC ALTIMETER



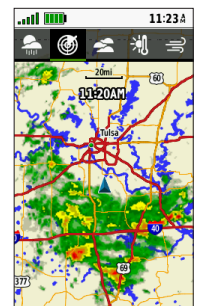
ELECTRONIC COMPASS






BIRDSEYE SATELLITE IMAGERY



ACTIVE WEATHER



PRODUCT COMPARISON:

	GPSPMAP 66s	GPSPMAP 66st	GPSPMAP 66i
			
Global interactive SOS ¹			•
Two-way global messaging ¹			•
Wi-Fi®, BLUETOOTH® and ANT+® wireless technologies ³	•	•	•
Built-in navigation sensors Digital compass, barometric altimeter and accelerometer	•	•	•
Smart notifications	•	•	•
Includes worldwide basemap	•	•	•
LED flashlight and beacon	•	•	•
Garmin Explore™ mobile app compatible	•	•	•
Weather	•	•	•
BirdsEye Satellite Imagery direct-to-device	•	•	•
Preloaded with TOPO maps for U.S. and Canada		•	•
Battery life	Up to 16 hours (Standard mode) Up to 1 week (Expedition mode)	Up to 16 hours (Standard mode) Up to 1 week (Expedition mode)	Up to 35 hours (at 10-minute tracking) Up to 200 hours (at 30-minute tracking)
Water rating	IPX7 ²	IPX7 ²	IPX7 ²
Physical dimensions	2.5" x 6.4" x 1.4" (6.2 x 16.3 x 3.5 cm)	2.5" x 6.4" x 1.4" (6.2 x 16.3 x 3.5 cm)	2.6" x 6.4" x 1.4" (6.6 x 16.3 x 3.5 cm)
Weight	8.1 oz (230 g) with batteries	8.1 oz (230 g) with batteries	8.5 oz (241g)
Display size	1.5"W x 2.5"H (3.8 x 6.3 cm) 3" diag (7.6 cm)	1.5"W x 2.5"H (3.8 x 6.3 cm) 3" diag (7.6 cm)	1.5"W x 2.5"H (3.8 x 6.3 cm) 3" diag (7.6 cm)

PRODUCT CONFIGURATIONS:

SCHEDULE B: 8526910070
HTS: 8426.91.0040

GPSPMAP 66i



AVAILABLE	INCLUDES	COUNTRY OF ORIGIN
June 2019	GPSPMAP 66i, USB cable, carabiner clip, documentation	Made in Taiwan. Cable made in Taiwan or China.

DESCRIPTION	SKU	UPC	MRP (USD)	MRP (CAD)
GPSPMAP 66i	010-02088-01	753759218737	\$599.99	\$829.99

SATELLITE AIRTIME PLANS:

ANNUAL COMMITMENT PLAN

- Ideal for consistent users; SOS capability provides ongoing peace of mind
- 12-month contract
- Lower monthly fees; plans range from \$11.95 to \$79.95 per month
- Unlimited SOS and Preset Messages at all levels
- Move up a plan at any time for free
- Initial account activation fee of \$19.95; move down a plan at any time for \$24.95

FREEDOM PLAN

- Pay for airtime 1 month at a time
- Change plans, up or down, or suspend the device for free
- Keep all your account data, tracks and details when suspended
- Plans range from \$14.95 to \$99.95 per month
- Unlimited SOS and Preset Messages at all levels
- Annual freedom program fee of \$24.95

GPSPMAP 66i handheld requires an active airtime subscription to use the Iridium® satellite communication features and must be activated at explore.garmin.com

PHYSICAL SPECIFICATIONS:

Unit dimensions (WxHxD):	2.6" x 6.4" x 1.4" (6.6 x 16.3 x 3.5 cm)
Display size:	1.5"W x 2.5"H (3.8 x 6.3 cm); 3" diag (7.6 cm)
Display resolution (WxH):	240 x 400 pixels
Display type:	Transflective color TFT
Weight:	8.5 oz (241g)
Battery type:	Rechargeable internal lithium-ion
Battery life:	Up to 35 hours in 10-minute tracking mode (default) Up to 200 hours in 30-minute tracking (Expedition) mode

Internal memory:	16 GB
Accepts data cards:	Yes - microSD™ card (sold separately)
Wireless technologies:	Wi-Fi®, BLUETOOTH® and ANT+® ³
Water rating:	IPX7 ²
Interface:	microUSB, NMEA 0183
Waypoints and routes:	10,000 waypoints 250 routes
Track log:	20,000 points 250 saved gpx tracks 300 saved fit activities

PACKAGING SPECIFICATIONS:



	GPSPMAP 66i
Gift box dimensions (W x H x D):	5.4" x 6.9" x 2.1" (13.7 x 17.6 x 5.3 cm)
Gift box weight:	15.5 oz (439 g)
Master carton dimensions (W x H x D):	15.0" x 12.4" x 12.0" (38.1 x 31.5 x 30.5 cm)
Master carton weight:	23.3 lbs (10.6 kg)
Master carton quantity:	20

PRODUCT COPY:

Product copy for GPSPMAP 66i can be downloaded from the [Dealer Resource Center](#).

VIDEOS:

GPSPMAP 66i SERIES VIDEO



MERCHANDISING:

DUMMY UNITS



GPSMAP 66i SKU: **M08-02088-00**

TRAY KIT SYSTEM



This display is great for small spaces and should be used inside a glass case. Displays up to 2 Garmin dummy units on each tray kit. For larger product assortments, tray kits may be merchandised side by side. Use with dummy units, small product cards, medium product cards, brackets, graphic back panels and trays, all ordered separately.

HIKING/OUTDOOR GRAPHIC BACK PANEL FOR THE TRAY KIT



SKU: **M00-10737-00**

Size: **7" W x 9" H**

This is one panel with artwork shown on both sides.

SMALL TRAY



SKU: **M00-00527-00**

Size: **7" W x 6" H**

ACRYLIC NONPOWERED FREESTANDING DISPLAY WITH WHEELS



This display ships as one full piece with wheels, is nonpowered, great for small narrow spaces and includes a lock and key. These displays are fully customizable and fit a variety of Garmin products. Displays up to 12 Garmin dummy units. Use with dummy units, small product cards, medium product cards, brackets and the graphic backer, all ordered separately. Contact your inside sales rep or order administration representative to place an order for the display if you meet the order requirements.

SKU: **M00-10756-00**

Size: **16" W x 15" D x 68.5" H**

Delivered by FedEx Freight

Weight on pallet: **150 lbs**

Dimensions on pallet: **48" W x 40" D x 80" H**

HIKING/OUTDOOR GRAPHIC BACKER FOR THE ACRYLIC NONPOWERED FREESTANDING DISPLAY



Customize your acrylic display with this magnetic graphic backer that is easy to install on the inside of the case door.

SKU: **M00-00541-00**

Size: **14.350" W x 35" H**

INTERCHANGEABLE MERCHANDISING COMPONENTS THAT CAN BE USED ON THE TRAY KITS AND THE ACRYLIC NONPOWERED FREESTANDING DISPLAY:

SMALL PRODUCT CARDS



GPSMAP 66i
SKU: **M00-00591-01**

Size: **2" H x 2.5" W**

LARGE HANDHELD BRACKET



SKU: **M00-10754-00**

Size: **2.25" H x 3.5" W**

MEDIUM PRODUCT CARDS



GPSMAP 66i
SKU: **M00-00591-00**

Size: **3.5" H x 3.25" W**

GARMIN BRANDED GRAY COUNTERTOP/ FREESTANDING VIDEO DISPLAY

Freestanding display size:
24" W x 60" T x 20" D



Countertop display size:
12" W x 17.75" T x 14" D



Order these components to build your Garmin branded gray countertop/freestanding video display: dummy units, brackets, SD™ card, product card and graphics. You can also order these components to update your existing countertop or freestanding display. Contact your inside sales rep or order administration representative to place an order for the components or full display if you meet the order requirements.

Final artwork is subject to change from images shown in the merchandising section. For more information on merchandising, please visit the dealer resource center at Garmin.com.

COMPATIBLE PRODUCT OVERVIEW:

FĒNIX® 5 PLUS SERIES GPS WATCHES³



See Garmin.com for details and available devices.

INSTINCT™ GPS WATCHES³



GARMIN EXPLORE™:

COMPATIBLE WITH THE GARMIN EXPLORE WEBSITE AND APP



Plan, review, sync, share and message your adventure from anywhere by using the Garmin Explore app:

- Create waypoints, routes, activities and collections, and sync them across the Garmin Explore app, Garmin Explore website and your device
- Includes advanced mapping solutions, including topographic maps, public lands, aerial imagery and more
- Trigger an interactive SOS and send two-way text messages with your compatible inReach® device
- Access your phone's contact list for easier messaging and sharing



COMPATIBLE ACCESSORY OVERVIEW:

NEW POWERED MOUNT



SKU: 010-12825-00
UPC: 753759218775

Designed for one-handed, quick-release operation, this powered mount allows for easy grab-and-go accessibility with your compatible handheld device. It uses the AMPS mounting pattern and includes an integrated cable with USB connection.

MSRP: \$29.99

NEW POWERED MOUNT WITH SUCTION CUP



SKU: 010-12825-01
UPC: 753759238223

Use the powered mount with suction cup to secure your compatible handheld device to a windshield or any smooth, flat surface.

MSRP: \$69.99

FLOTATION LANYARD



SKU: 010-12525-01
UPC: 753759177133

Keep your device secure and close at hand on the water with this neoprene flotation lanyard, featuring a quick-release connector.

MSRP: \$7.99

BELT CLIP










SKU: 010-11734-20
UPC: 753759980375

Keep your compatible device within reach while on the move with this belt clip. Simply snap your device securely into the durable plastic mount, and clamp it to your belt.

MSRP: \$9.99

COMPATIBLE ACCESSORY OVERVIEW (CONTINUED):

ADDITIONAL ACCESSORIES	SKU	UPC	MSRP	DESCRIPTION	IMAGE
microUSB Cable	010-11478-01	753759101985	\$14.99	Get the most out of your device using this microUSB cable.	
Bike/Cart Mount	010-11023-00	753759074654	\$9.99	Simply snap in your device. The mount comes with four cable ties and fits up to a 1" (2.54 cm) diameter bar.	
Friction Mount	010-11602-00	753759975463	\$44.99	Use this portable friction mount to mount your device on your dashboard for easier navigation as you drive your vehicle.	
Adjustable Handheld Mount	010-11031-00	753759075880	\$29.99	Secure your compatible handheld device to any flat surface with this adjustable mount.	
Retractable Lanyard	010-10888-00	753759066604	\$24.99	Keep your GPS close and secure with this retractable lanyard.	
Swivel Belt Clip	010-11022-10	753759093662	\$7.23	Keep your device within reach with this swivel belt clip. Your device fits securely into a mount that clips to your belt.	
Backpack Tether	010-11855-00	753759990138	\$19.99	This lightweight backpack tether is perfect for conditions that demand hands-free attention.	

¹Satellite subscription required

²Withstands incidental exposure to water of up to 1 meter for up to 30 minutes; see Garmin.com/waterrating for more details

³ANT+® wireless technology capabilities coming to GPSMAP 66i in August 2019

NOTICE: Some jurisdictions regulate or prohibit the use of satellite communications devices. It is the responsibility of the user to know and follow all applicable laws in the jurisdictions where the device is intended to be used.

Please note: The ECCNs and Classification numbers provided represent the opinion of Garmin International, Inc. of the proper classifications for the products today (based on the original software and/or original hardware). Classifications are subject to change. Under the U.S. export regulations, the U.S. Government assigns your organization or client, as exporter/importer of record, the responsibility for determining the correct classification of any item at the time of export/import. Depending on the products, the customer, or the country of destination, an export license may be required by the Department of Commerce prior to shipment. The Department of Commerce's Bureau of Industry and Security (former Bureau of Export Administration) website (<http://www.bis.doc.gov>) provides information that might be useful to you in determining whether you need to obtain a license for a particular shipment. To be clear, if an item described above does require a validated export license, it would be the exporter's responsibility to obtain this license prior to exportation.

The Bluetooth word mark and logos are registered trademarks owned by Bluetooth SIG, Inc. and any use of such marks by Garmin is under license. Wi-Fi is a registered trademark of the Wi-Fi Alliance.