

THANK YOU!

For purchasing the new ESCORT M2 Dash Cam

Download Drive Smarter® to Get Started

With the Drive Smarter® app you can view, edit, and share footage from your smartphone or PC/Mac plus share and receive real-time driver alerts. Download today!



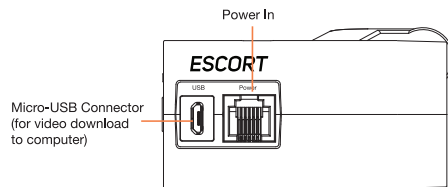
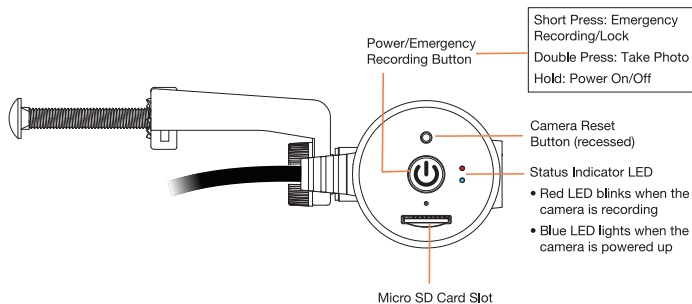
drivesmarter.com/downloads



Full manual available at: www.escortradar.com/manuals



ESCORT M2 Features

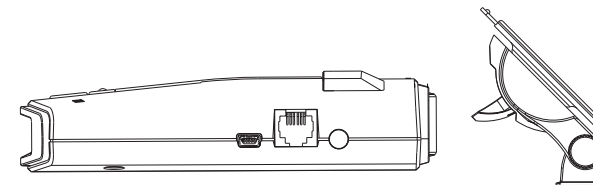


Note: Some components from your compatible detector's mount will be used. Your M2 is pre-mounted on the Camera Mount Arm.

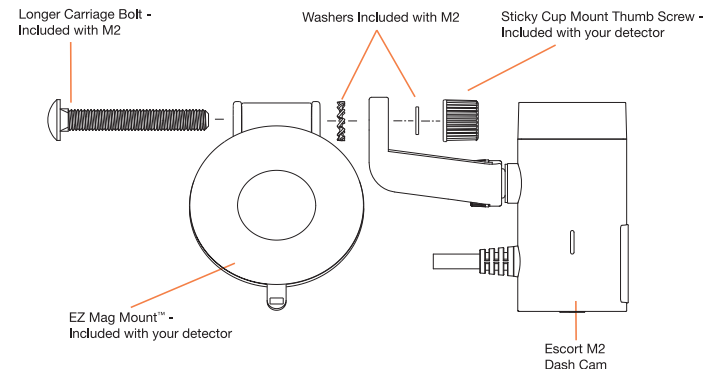
Attach ESCORT M2 to EZ Mag Mount™

Remove your detector from the sticky mount and attach the M2 as shown below.

- 1 Remove Radar from Windshield and Detach EZ Mag Mount™



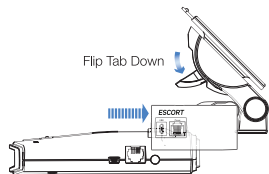
- 2 Attach ESCORT M2 to Mount



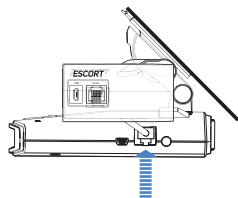
Warning: Tighten Thumb Screw firmly to ensure stable video recordings

Mount to Your Windshield

- 3 Attach radar/laser detector to EZ Mag Mount™ with M2 installed

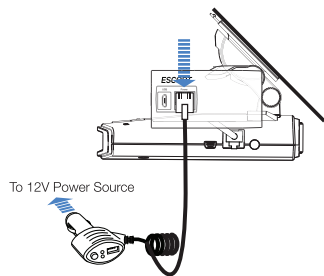


- 4 Connect M2 power cable to radar/laser detector

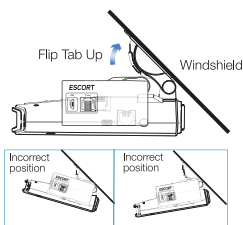


Important: Make sure the M2 (not the detector) is centered on your windshield.

- 5 Connect Smart Cord to M2 and 12V power source



- 6 Mount to windshield, adjust radar/camera angle and tighten assembly screws



7 Download the Drive Smarter® App

Download the Drive Smarter App from the App Store or Google Play and install it on your smartphone. Follow the Tutorial on the App.



- Adjust Volume
- Change Language
- Change Resolution
- Format SD Card
- Update Firmware
- ...and more!

Troubleshooting

If your unit is not operating properly, please follow these troubleshooting steps:

- Make sure the power cord to the M2, as well as the pigtail cord from the M2 to the detector, are both properly connected.
- Make sure the socket of your vehicle's cigarette lighter is clean and free of corrosion.
- Make sure the power cord's adapter is firmly seated in your cigarette lighter, and the power LED is on.
- Make sure the micro SD memory card is properly inserted into the memory card slot.
- If there is an SD card error, format the SD card from the app. Please note this will delete all files stored on the card.

For detailed and up-to-date FAQs, please visit www.escortradar.com/FAQs

ESCORT M2

RADAR-MOUNTED SMART DASH CAM



QUICK START GUIDE