

---

## Stereo USB Cassette Player with Encoding to Computer



**MODEL: SCR-90  
USER MANUAL**

**PLEASE READ THIS USER MANUAL COMPLETELY BEFORE OPERATING  
THIS UNIT AND RETAIN THIS BOOKLET FOR FUTURE REFERENCE**

## COMPLIANCE WITH FCC REGULATIONS

This device complies with Part 15 of the FCC Rules. Operation is subject to the following two conditions:

- (1) This device may not cause harmful interference, and
- (2) This device must accept any interference received, including interference that may cause undesired operation.

**NOTE:** This equipment has been tested and found to comply with the limits for a Class B Digital Device, pursuant to Part 15 of the FCC Rules. These limits are designed to provide reasonable protection against harmful interference in a residential installation. This equipment generates, uses and can radiate radio frequency energy and, if not installed and used in accordance with the instructions, may cause harmful interference to radio communications. However, there is no guarantee that interference will not occur in a particular installation. If this equipment does cause harmful interference to radio or television reception, which can be determined by turning the equipment off and on, the user is encouraged to try to correct the interference by one or more of the following measures:

- Reorient or relocate the receiving antenna.
- Increase the separation between the equipment and receiver.
- Connect the equipment into an outlet on a circuit different from that to which the receiver is connected.
- Consult the dealer or an experienced radio/TV technician for help.

### **WARNING**

**Changes or modifications to this unit not expressly approved by the party responsible for compliance could void the user's authority to operate the equipment.**

## Dear JENSEN Customer

Selecting fine audio equipment such as the unit you've just purchased is only the start of your musical enjoyment. Now it's time to consider how you can maximize the fun and excitement your equipment offers. This manufacturer and the Electronic Industries Association's Consumer Electronics Group want you to get the most out of your equipment by playing it at a safe level. One that lets the sound come through loud and clear without annoying blaring or distortion and, most importantly, without affecting your sensitive hearing. Sound can be deceiving. Over time your hearing "comfort level" adapts to higher volumes of sound. So what sounds "normal" can actually be loud and harmful to your hearing. Guard against this by setting your equipment at a safe level BEFORE your hearing adapts.

### **To establish a safe level:**

- Start your volume control at a low setting.
- Slowly increase the sound until you can hear it comfortably and clearly, and without distortion.
- Once you have established a comfortable sound level: Set the dial and leave it there.

Take a minute to do this now will help to prevent hearing damage or loss in the future. After all, we want you listening for a lifetime.

## We Want You Listening for a Lifetime

Used wisely, your new sound equipment will provide a lifetime of fun and enjoyment. Since hearing damage from loud noise is often undetectable until it is too late, this manufacturer and the Electronic Industries Association's Consumer Electronics Group recommend you avoid prolonged exposure to excessive noise.



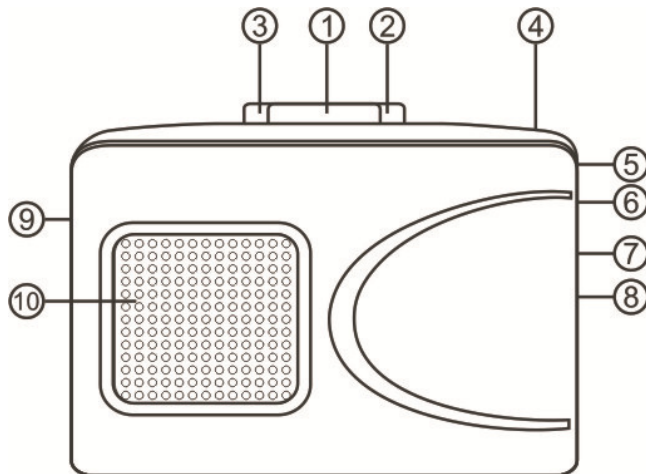
### Customer's Record:

The serial number of this product is found on its bottom. You should note the serial number of this unit in the space provided as a permanent record of your purchase to aid in identification in the event of theft or loss.

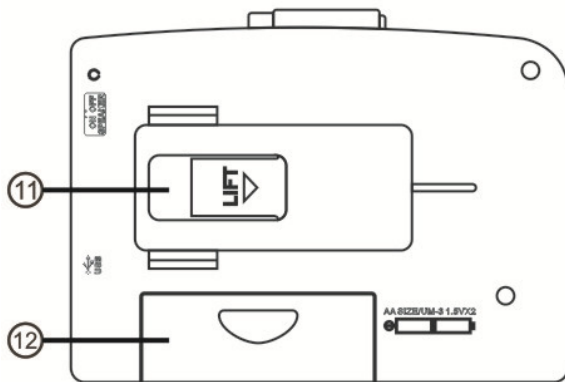
Model Number: SCR-90

Serial Number: \_\_\_\_\_

## LOCATION OF CONTROLS



1. PLAY ► BUTTON
2. STOP ■ BUTTON
3. FAST FORWARD ►► BUTTON
4. BATTERY LED INDICATOR
5. EARPHONE JACK
6. SPEAKER ON/OFF SWITCH
7. VOLUME CONTROL
8. MINI USB JACK
9. DC IN JACK
10. SPEAKER
11. BELT CLIP
12. BATTERY DOOR



## POWER SOURCE

### BATTERY OPERATION

Notes: If you are using an external AC adapter (not included) for powering the unit, disconnect it before installing batteries.

For best performance and longer operating time, we recommend **using** alkaline batteries.

1. Remove the BATTERY DOOR (#12) on the back of the unit.
2. Follow the polarity diagram shown beside the BATTERY DOOR (#12) to insert 2 X 'AA' size (UM-3) batteries and close the BATTERY DOOR (#12).

### BATTERY WARNING

1. Be sure the batteries are installed correctly. Wrong polarity may damage the unit.
2. Use only the size and type of batteries specified.
3. Do not mix old and new batteries.
4. Do not mix alkaline, standard (carbon-zinc) or rechargeable (nickel-cadmium) batteries.
5. If the unit is not to be used for an extended period of time, remove the batteries. Old or leaking batteries can cause damage to the unit and may void the warranty.
6. Do not try to recharge batteries not intended to be recharged; they can overheat and rupture. (Follow battery manufacturer's directions).
7. Do not dispose of batteries in fire, batteries may leak or explode.

### AC ADAPTER OPERATION (adapter not included)

This unit can also be powered using an AC adapter (not included) with an input voltage of AC 120V ~ 60Hz, and output voltage of DC 3V  $\equiv$  300mA.

1. Plug the AC adapter (not included) into a household AC power outlet.
2. Insert the DC plug of the AC adapter cord into the DC IN JACK (#9).
3. If batteries are installed in the SCR-90, they will automatically be disconnected when using an AC adapter.

NOTE: Only use adaptor with an output voltage rated at DC 3V  $\equiv$  300mA with a center positive plug.



**WARNING:** Before connecting to the power supply, ensure that the supply corresponds to the information on the rating label located on the back of the unit.

### USB POWER

- This unit can also be powered using the built-in MINI USB JACK (#8) and the included USB cable.
- A USB power supply (not included) like a cell phone charger, computer USB port or USB power bank with a minimum output of DC 5V  $\equiv$  500mA is required.
- Plug the mini USB connector on the cable into the MINI USB JACK (#8) located on the SCR-90. Plug the other end of the USB cable into the USB charger, power bank or computer (not included).
- If batteries are installed in the SCR-90, they will automatically be disconnected when using the USB port for powering the unit.

## CASSETTE PLAYER OPERATION

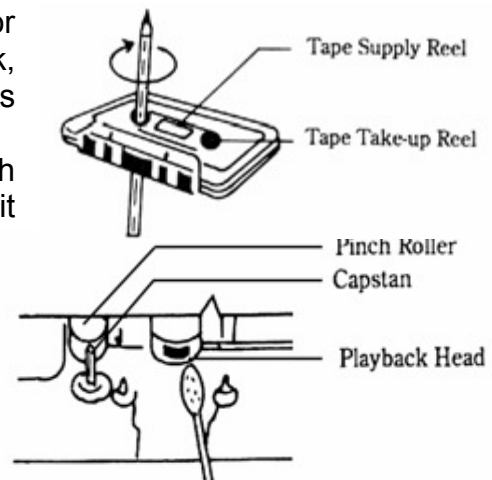
1. Open the cassette door and insert a pre-recorded cassette tape with the exposed tape facing out. Close the cassette door.
2. Select the playback output.
  - SPEAKER: Slide the SPEAKER ON/OFF SWITCH (#6) to ON position to select speaker output.
  - EARPHONE: Slide SPEAKER ON/OFF SWITCH to OFF position to select earphone output.
3. Press the PLAY ► BUTTON (#1) and adjust the VOLUME CONTROL (#7) to obtain the desired sound level.
4. Press the FAST FORWARD ►► BUTTON (#3) when you wish to rapidly advance the tape.
5. Press the STOP ■ BUTTON (#2) to switch off.

### AUTO STOP

To protect your cassette tapes and prevent unnecessary wear to the pinch roller of the cassette mechanism, this unit is equipped with an Automatic Stop System. When the tape ends during play or fast forwarding, it will automatically release to stop the cassette from running.

### CASSETTE TAPE OPERATING TIPS

1. High quality tapes are recommended to obtain maximum quality reproduction from recordings.
2. Tapes with playing time of 120 minutes (C-120) are not recommended because they contain thinner and longer tape that has a greater chance to malfunction and jam, which may damage the cassette mechanism.
3. To obtain good reproduction, the head should be cleaned after every 10 to 20 hours of use. It is also recommended that the cassette be kept away from excessive heat or cold.
4. If there is slack in the tape, remove the slack prior to inserting the cassette. To remove the slack, insert a pencil into the hub and rotate clockwise as shown:
5. A leader tape is provided at the beginning on each cassette. There is no recording on this area, so it is necessary to let the tape run for about five seconds to clear the head.
6. Keep the tape head clean since a dirty head can cause distorted sound or improper tape speed. Depress the PLAY ► BUTTON (#1) and use a small cotton swab with tape head cleaner or alcohol to clean the tape head, capstan and pinch roller as shown:



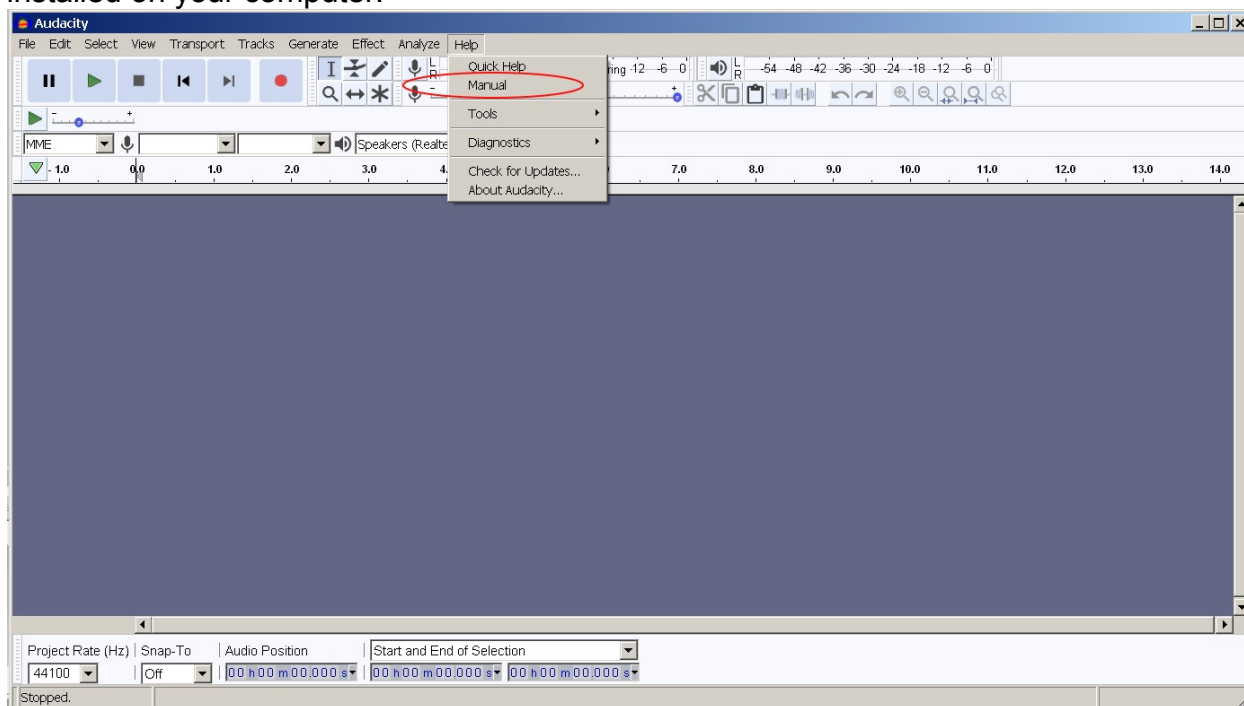
## READ THIS IMPORTANT INFORMATION BEFORE USING YOUR EARBUDS

1. Avoid extended play at very high volume as it may impair your hearing.
2. If you experience ringing in your ears, reduce the volume or shut off your unit.
3. Do not use while driving a motorized vehicle. This is dangerous and also illegal in some states.
4. Keep the volume at a reasonable level even if your headset is an open-air type designed to allow you to hear outside sounds. Please note excessively high volume may still block outside sounds.

## RECORDING TO YOUR COMPUTER

Record audio from the tape directly to your computer using the included USB cable and Audacity Software included on the enclosed CD.

The Audacity program manual can be accessed from the programs pull down menu once installed on your computer.



For more information on compatibility, updates or the Audacity program, please visit: <https://www.audacityteam.org>

## CARE AND MAINTENANCE

1. Clean your unit with a damp (never wet) cloth. Solvent or detergent should never be used.
2. Avoid leaving your unit in direct sunlight or in hot, humid or dusty places.
3. Keep your unit away from heating appliances and sources of electrical noise such as fluorescent lamps or motors.

## TROUBLE SHOOTING GUIDE

If you experience difficulties in the use of this Cassette Player with AM/FM Radio, please check the following or call 1-800-777-5331 for Customer Service and support

SYMPTOM	POSSIBLE	SOLUTION
No sound	Low or no power	Replace all batteries with new ones.
	Volume set at minimum	Increase Volume.
Sound appears distorted at high volume setting	Volume control is set to maximum	Adjust Volume control to a lower comfortable level
Speaker no sound	The Speaker is OFF	Slide the Speaker On/Off switch to ON
	Volume at minimum	Increase volume
Tape Sound distorted	Defective tape or dirty tape head	Replace tape or clean tape head
Speed varies	Tape old or worn	Replace the tape
	Dirty roller and capstan	Clean roller and capstan

## SPECIFICATION

Power Requirement Battery: 2 x "AA"(UM-3) batteries (not included)  
 AC Adaptor (not included): Input: AC 120V ~ 60Hz  
 Output: DC 3V  $\text{---}$  300mA  $\ominus$   $\oplus$

USB Power: DC 5V  $\text{---}$  500mA

## SPECTRA GREEN NOTICE



At Spectra, environmental and social responsibility is a core value of our business. We are dedicated to continuous implementation of responsible initiatives with an aim to conserve and maintain the environment through responsible recycling.

Please visit us at

<http://www.spectraintl.com/green.htm> for more information on Spectra's green initiatives or to find a recycler in your area.

## 90 DAY LIMITED WARRANTY AND SERVICE VALID IN THE U.S.A. ONLY

SPECTRA MERCHANDISING INTERNATIONAL, INC. warrants this unit to be free from defective materials or factory workmanship for a period of 90 days from the date of original customer purchase and provided the product is utilized within the U.S.A. This warranty is not assignable or transferable. Our obligation under this warranty is the repair or replacement of the defective unit or any part thereof, except batteries, when it is returned to the SPECTRA Service Department, accompanied by proof of the date of original consumer purchase, such as a duplicate copy of a sales receipt.

You must pay all shipping charges required to ship the product to SPECTRA for warranty service. If the product is repaired or replaced under warranty, the return charges will be at SPECTRA's expense. There are no other express warranties other than those stated herein.

This warranty is valid only in accordance with the conditions set forth below:

1. The warranty applies to the SPECTRA product only while:
  - a. It remains in the possession of the original purchaser and proof of purchase is demonstrated.
  - b. It has not been subjected to accident, misuse, abuse, improper service, usage outside the descriptions and warnings covered within the user manual or non-SPECTRA approved modifications.
  - c. Claims are made within the warranty period.
2. This warranty does not cover damage or equipment failure caused by electrical wiring not in compliance with electrical codes or SPECTRA user manual specifications, or failure to provide reasonable care and necessary maintenance as outlined in the user manual.
3. Warranty of all SPECTRA products applies to residential use only and is void when products are used in nonresidential environment or installed outside the United States.

This warranty gives you specific legal rights, and you may also have other rights which vary from state to state. TO OBTAIN SERVICE please remove all batteries (if any) and pack the unit carefully and send it freight prepaid to SPECTRA at the address shown below. IF THE UNIT IS RETURNED WITHIN THE WARRANTY PERIOD shown above, please include a proof of purchase (dated cash register receipt) so that we may establish your eligibility for warranty service and repair of the unit without cost. Also include a note with a description explaining how the unit is defective. A customer service representative may need to contact you regarding the status of your repair, so please include your name, address, phone number and email address to expedite the process.

IF THE UNIT IS OUTSIDE THE WARRANTY PERIOD, please include a check for **\$10.00** to cover the cost of repair, handling and return postage. All out of warranty returns must be sent prepaid.

It is recommended that you contact SPECTRA first at 1-800-777-5331 or by email at [custserv@spectraintl.com](mailto:custserv@spectraintl.com) for updated information on the unit requiring service. In some cases, the model you have may be discontinued, and SPECTRA reserves the right to offer alternative options for repair or replacement.

SPECTRA MERCHANDISING INTERNATIONAL, INC.  
4230 North Normandy Avenue,  
Chicago, IL60634, USA. 1-800-777-5331

To register your product, visit the link on the website below to enter your information.  
<http://www.spectraintl.com/wform.htm>

0619

Printed in China