



Dear Whistler Customer,

If you have questions concerning the operation of this Whistler product please call:

**Customer Service**  
**1-800-531-0004**  
 Monday - Friday • 8:00 am - 5:00 pm CT  
 or visit our website  
**www.whistlergroup.com**

Please keep the receipt in a safe place. You may register your product online at **www.whistlergroup.com**. For warranty verification purposes, a copy of your dated store receipt must still accompany any unit sent in for warranty work. If the unit is returned without a dated store receipt, an out-of-warranty service charge applies. Note: Your warranty period begins at the time of purchase. The warranty is validated only by the dated store receipt! Please record the serial number of the unit in the space provided in the accessories section of the guide.

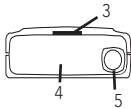
To fully acquaint yourself with the operation of your Whistler detector and to better understand the differences between detecting radar, laser, and safety radar signals, we recommend reading this entire guide or visiting our FAQ. page on our website **www.whistlergroup.com**

Enjoy your Whistler detector and please drive safely.

Sincerely,  
 The Whistler Group, Inc.

<b>Model Features Summary</b> .....	<b>3-4</b>
<b>Installation</b> .....	<b>5-7</b>
• Mounting Guidelines	
• Windshield Mounting	
• Power Connection and Fuse Replacement	
<b>Operation</b> .....	<b>8-18</b>
• Power On, Self Test Audio Level Adjustment	
• Auto Quiet Mode	
• Quiet Mode	
• City/City 1/ City 2 Mode	
• Highway Mode	
• Alert Periscopes	
• Dim/Dark	
• Selectable Vehicle Battery Saver Mode	
• Integrated Real Voice®	
• Teach/Tutorial Mode	
• Setting Saver	
• Feature Engaged Confirmation	
• Auto Dim	
• X/K Ka Filter Mode	
• Ka Max Mode	
• FDSR/TFSR Rejection Modes	
• Option Select Mode	
• Stay Alert Feature	
• Alert Priority	
• Safety Warning System™	
• Intelliscord® Ready	
• VG-2	
• Reset Features	
• Ka RSID (patented)	
• LSID	
<b>POP™ Mode Alerts</b> .....	<b>18</b>
<b>Laser/Radar Alerts</b> .....	<b>19</b>
• Speed Radar Audio/Visual Alerts	
• Laser Audio/Visual Alerts	
• Pulse Protection®	
<b>Troubleshooting Guide</b> .....	<b>20</b>
<b>Care and Maintenance</b> .....	<b>20-21</b>
<b>Are Detectors Legal?</b> .....	<b>21</b>
<b>FCC Information</b> .....	<b>21</b>
<b>Speed Monitoring</b> .....	<b>22-23</b>
• Laser Facts/Tip	
• Radar Facts	
• Other Speed Detection Systems	
• Radar Detector Detector	
<b>Warranty Information</b> .....	<b>23-25</b>
<b>Specifications</b> .....	<b>26</b>
<b>Accessories</b> .....	<b>27</b>

**FEATURES**



**3**

**4**

**OPERATION**

**Alert Periscopes**  
 Whistler's Alert Periscopes provide an added attention getting visual alert. The two extra LEDs flash on and off when the unit alarms to provide a unique visual alert. This alert can be programmed, through the Option Select Mode to: 1. flash for all alarms, 2. remain on, or 3. turn LEDs off completely.

**Dim/Dark Mode**  
 Dim/Dark Mode reduces the illumination of the display.

- Press the Dark button to reduce illumination to a Dim setting.
- Press the Dark button a second time engages Dark Mode. The display illumination is further reduced.

Dim or Dark Mode can be engaged during an alert. In Dark Mode, the display goes dark for as long as a signal is being detected and for 20 seconds after, then the display returns to the dimmer setting.

• Press the Dark button a third time to restore full illumination to the display.

**Selectable Vehicle Battery Saver Mode**  
 The Vehicle Battery Saver Mode when selected automatically shuts off the detector within 3 hours. The timer is reset if the detector is turned off, unplugged or any button is pressed before the timer has expired. The detector will alert you with an audible and visual warning before it shuts off. During this warning, you can momentarily reset the timer by pressing any button. If the unit has automatically turned off, press the Power button to turn the unit back on. Refer to "Option Select Mode" for instructions for changing the battery saver mode options.

**10**

**FEATURE DESCRIPTIONS**

- Bracket Release Button** - provides quick and easy release of the mounting bracket.
- Speaker** - provides distinct audio warnings for X, K, Ka band radar, safety warning system, and laser.
- Mounting Bracket Location** - slot holds mounting bracket firmly.
- Radar Antenna** - compact, high-efficiency antenna receives radar signals.
- Front Laser** - high gain optical lens provides increased sensitivity and field of view for leading-edge laser detection.
- Rear Laser** - an integrated optical waveguide provides superior detection of laser signals transmitted from behind.
- City Button** - reduces the annoyance of false alerts typically encountered in urban driving areas.
- Quiet Button** - pressing QUIET before a signal is detected engages Auto Quiet Mode which automatically reduces the audio level after the initial warning to a low audio level setting. Pressing QUIET during a radar/laser encounter silences audio alerts, while allowing visual alerts to keep you informed.
- Power / Volume Control** - gently press this button in to turn the unit on/off. Move back or forward to adjust the audio level.
- Dim / Dark** - engages Dim/Dark modes.
- Menu Button** - enters Option Select Mode.
- Text Display** - provides distinct visual confirmation of signals detected, signal strength, and indicates engaged modes of operation.
- Alert Periscopes** - provide an additional attention getting visual alert.
- Power Jack** - provides connection for the power cord.

**4**

**OPERATION**

**Integrated Real Voice®**  
 When selected, Real Voice® will be used to articulate the following:

1. Band Identification
2. Safety Warning System messages
3. Feature Selection

**NOTE:** In certain cases, the voice message does not replicate the text message.

**Teach/Tutorial Mode**  
 Provides simulated alerts for each type of signal.

- Press City and Quiet buttons simultaneously

- Display Shows: **TEACH**

- Press Dark button to exit.

**Setting Saver**  
 Setting Saver stores your personalized settings so that when the detector is turned off and then on again, you do not have to re-enter them.

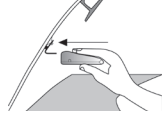
**Feature Engaged Confirmation**  
 Each time a button is pressed, one beep confirms feature "on", two beeps confirm feature "off".

**Auto Dim**  
 The Auto Dim feature automatically switches the illumination of the text display between the bright and dim settings according to varying light conditions so that the text display will always be easy to read. To manually override the auto dim feature, use the dark button on the unit. Enter Option Select Mode to turn off the auto dim feature.

**11**

**INSTALLATION**

- Mounting Guidelines**
- Mount the unit as low as possible near the center of the windshield.
  - Do not mount the unit behind wipers, ornaments, mirrored sunscreens, etc. These obstructions have metal surfaces which can affect radar and laser signals and reduce critical warning time. (Regular tinted glass does not affect reception).
  - Some windshields have an Instaclear™ or Electriclear™ type coating, which affect radar signals. Consult your dealer or the user guide supplied with your vehicle to determine if your windshield has this coating.
  - Avoid placing the unit in direct contact with the windshield.
  - To reduce the possibility of theft, conceal the unit when not in use.



Windshield Mounting

**IMPORTANT:** Make sure the unit is level

- Windshield Mounting**
- Install the two suction cups and rubber bumper onto the bracket by fitting them into their holes.
  - Press the suction cups onto the windshield at the location you have chosen.



Rubber Bumper

**5**

**OPERATION**

**X/K and Ka Filter Modes**  
 There are times when a radar detector in another vehicle, can emit a frequency which can cause your detector to falsely alert. These Filter Modes allow you to select the level needed for your area to minimize the occurrences of these false alerts. X/K and Ka Filter Mode factory default settings should provide adequate filtering for most conditions. If you experience excessive alerts due to radar detectors in other vehicles, increase the Filter level for the band received. See Option Selection Mode to change the filter settings.

**Ka Max Mode**  
 Ka Max Mode provides enhanced Ka sensitivity - increased protection. This mode can be selected with or without RSID. See Option Select Mode for changing Ka options.

**Field Disturbance Sensor Rejection (FDSR) Traffic Flow Sensor Rejection (TFSR)**  
 Recently many new products that operate on police radar frequencies have been causing nuisance alerts to radar detectors. These radar based sensors are installed alongside the Highway and more recently on vehicles used as lane change assist / blind spot detectors / collision avoidance systems. **TFSR** when turned ON is designed to eliminate alerts from specific Traffic Flow sensors. **FDSR** when turned ON is designed to identify all radar based collision avoidance systems that operate all radar based collision avoidance systems that operate within the same band as police radar and provide a brief less intrusive alert to keep you informed and aware. A signal strength indicator will help determine your proximity to the source without the continued annoyance of audio.

**We suggest you turn FDSR ON if you are experiencing excessive random false alerts when behind select vehicles.**

**12**

**INSTALLATION**

**IMPORTANT:** Some newer cars have a plastic safety coating on the inside of the windshield. The windshield bracket may leave permanent marks on this type of surface. To find out if your vehicle has this type of windshield, check the vehicle's user guide or ask your dealer. We recommend that you do not leave the suction cup bracket on the window in direct sunlight. If the detector is removed, this may cause blistering of the dash in some vehicles.

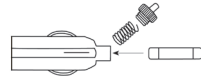
- Slide the detector onto the bracket until it locks into place.
- If necessary, the unit may be leveled by bending the windshield bracket. Press the bracket release button and remove the detector before bending.

**Power Cord Connection**

- Plug the small end of the power cord into the unit's power jack.
- Plug the large end into the vehicle's cigarette lighter socket.

**NOTE:** Cord fits tightly into detector. When installing the cord, expect some resistance.

**Fuse Replacement**  
 The lighter socket plug is equipped with a replaceable 2 amp, 3AG fuse located behind the silver tip. To replace the fuse, carefully unscrew the tip of the plug.



**6**

**OPERATION**

**Option Select Mode**  
 Press the Menu button to enter Option Select Mode. Each press of the Menu button changes to the next selectable feature. The Dark (D) button and the Quiet (Q) button turns the feature ON/OFF or Blinking for example. A button must be pressed within 20 seconds or Option Select Mode will automatically be exited.

**NOTE:** Press and hold Menu button to exit Option Select Mode.

Feature	Display Shows	To Change D=Dark / Q=Quiet	Option
QUIET	S1: Quiet	D or Q to select	Remote Control of Dim, City, Quiet or Power Functions
POWER	S2: Power	D or Q to Select	Remote Control of Dim, City, Quiet or Power Functions
AUTO DIM	ADIM: ON	D = ON Q = OFF	Auto Dim ON (default) Auto Dim OFF
TONE	TONE 3	D or Q to select	Tone 1, 2, 3 (3 Different Tone Patterns)
TEST	TEST ON	D = ON Q = OFF	X, K, Ka Audio Tones One Beep During Power Up
X BAND	X - ON	D = ON Q = OFF	X Band = ON (Default) X Band OFF
K BAND	K - ON	D = ON Q = OFF	K Band = ON (Default) K Band OFF
Ka BAND	KA NORM	D or Q to Select	Ka Band (RSID, NORM, OFF, MAX, MAXID)
LASER	LSID YES	D or Q to Select	LASER (NORM, OFF, LSID)

**13**

**INSTALLATION**

**IMPORTANT:** Unscrew slowly. The tip contains a spring which may fly out when disassembling. Insert the new fuse with the spring and screw on the tip. With use, screw cap on plug may loosen. Retighten occasionally.

**Installing the Hardwire Kit**  
 The "U" type connector must be secured to a metal surface that is electrically connected to the battery ground (negative) terminal. The spade type connector can connect to either live 12 volts or switched 12 volts at your fuse panel accessory port. If no port is available, cut off the spade terminal, expose 1/4 to 1/2 inch of wire, and splice into a source of 12 volt power.

**Fuse Replacement - Hardwire Kit**  
 The inline fuse holder on the power cable is equipped with a replaceable 2 amp, 3AG fuse located inside the fuse holder. To replace the fuse, carefully twist the holder to open it to gain access to the fuse.

**OPERATION**

LASER AREA 1	.02 - .95Y	D = ON Q = OFF	Laser Area 1 = ON (Default) Laser Area 1 = OFF
LASER AREA 2	2.6 - 3.2Y	D = ON Q = OFF	Laser Area 2 = ON (Default) Laser Area 2 = OFF
LASER AREA 3	3.8 - 4.2Y	D = ON Q = OFF	Laser Area 3 = ON (Default) Laser Area 3 = OFF
VG-2 Mode	VG-2 OFF	D = ON Q = OFF	VG-2 = ON VG-2 = OFF (Default)
SWS™	SWS OFF	D = ON Q = OFF	SWS™ = ON SWS™ = OFF (Default)
VOICE	VOICE EN	D or Q to Select	VOICE EN (English, default) VOICE SP (Spanish) Voice N = OFF
POP™	POP OFF	D = ON Q = OFF	POP™ = ON POP™ = OFF (Default)
BATTERY SAVER	B SVR OFF	D = ON Q = OFF	Battery Saver = ON Battery Saver = OFF (Default)
XK FILTER	XK FLTR1	D or Q to Select	Filter 1 (default) Filter 2, Filter 3, Filter 0
Ka FILTER	Ka FLTR1	D or Q to select	Filter 1 (default) Filter 2, Filter 3, Filter 0
ALERT PERISCOPES	LEDBLNK	D or Q to select	Alert Periscopes (ON, OFF or Blinking)
TFSR	TFSR OFF	D = ON Q = OFF	TFSR = ON TFSR = OFF (default)
FDSR	FDSR OFF	D = ON Q = OFF Both D & Q	FDSR = ON FDSR = OFF (default) FDSR = FDSR, no Audio

**14**

**8**

**9**