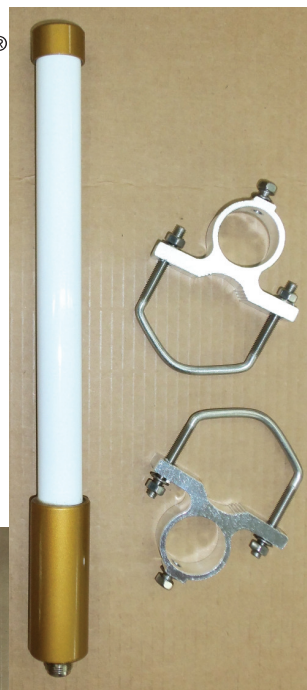


# Fiberglass Omnidirectional Base

- N Female connector • Pre tuned • w/Mounting bracket
- No-Ground Plane • Poly bag w/header card • UPC coded

**browning®**

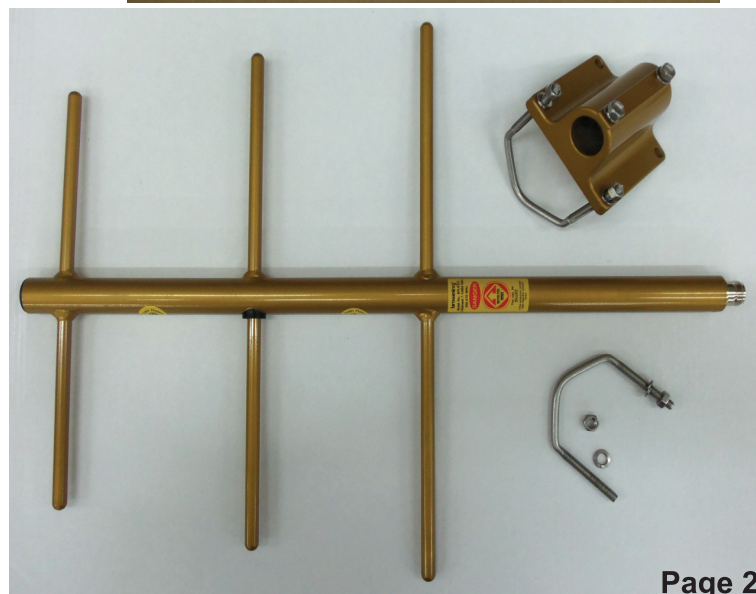
Model	Frequency	Gain	Length	VSWR	Bandwidth (VSWR less than 1.5:1)
BR-6050	152-156 MHz	Unity	68"	1.25 Max	10 MHz
BR-6052	148-152 MHz	3 dBd	107"	1.30 Max	
BR-6053	152-156 MHz	3 dBd	107"	1.25 Max	
BR-6054	156-162 MHz	3 dBd	107"	1.30 Max	
BR-6070	Dual Band 144-148 MHz/ 440-450 MHz	4.5 dBd 7.2 dBd	63"	1.5:1 Max	
BR-6140	450-470 MHz	Unity	26"	1.30 Max	50 MHz
BR-6143	450-460 MHz	3 dBd	44"	1.25 Max	33 MHz
BR-6145	450-460 MHz	5 dBd	76"	1.30 Max	15 MHz
BR-6146	460-470 MHz	5 dBd	76"	1.30 Max	15 MHz
BR-6155	450-470 MHz	5 dBd	76"	1.70 Max	25 MHz (VSWR less than 1.8:1)
BR-6280	806-866 MHz	Unity	15"	1.25 Max	110 MHz
BR-6283	806-866 MHz	3 dBd	25"	1.60 Max	96 MHz (VSWR less than 1.8:1)
BR-6286	806-866 MHz	6 dBd	65"		
BR-6245	2.4 - 2.5 GHz	5 dBi	14"		
BR-6248	2.4 - 2.5 GHz	8 dBi	24"		
BR-6249	2.4 - 2.5 GHz	15 dBi	63"		



# Fully Welded Yagi's

- N Female connector • Pre tuned • w/Mounting bracket • Boxed w/UPC code

Model	Frequency	Elements	Gain	Finish
BR-6353	450-470 MHz	3	7.1 dBd	Gold
BR-6355	450-470 MHz	5	9.2 dBd	Gold
BR-6356	450-470 MHz	6	10.2 dBd	Gold
BR-6356-B	450-470 MHz	6	10.2 dBd	Black
BR-6383	806-896 MHz	3	6 dBd	Gold
BR-6386	806-896 MHz	6	9 dBd	Gold
BR-6386-B	806-896 MHz	6	9 dBd	Black
BR-6388	806-896 MHz	12	11 dBd	Gold
BR-6388-B	806-896 MHz	12	11 dBd	Black
BR-6393	896-970 MHz	3	6 dBd	Gold
BR-6396	896-970 MHz	6	9 dBd	Gold



# Tunable Yagi's

- N Female connector • w/Mounting bracket • Boxed w/UPC code

BR-6333	150-174 MHz	3	7.1 dBd	Gold
BR-6333-B	150-174 MHz	3	7.1 dBd	Black

# Enclosed Yagi's

- 3 ft. cable w/ N Female connector • w/Mounting bracket
- Boxed w/UPC code

BR-6320	2.4-2.5 GHz	Enclosed	15 dBi	White
BR-6325	4.9-5.8 GHz	Enclosed	14.5 dBi	White