

1. BILL OF MATERIAL



Camera



Manual



24' Male to male RCA cable

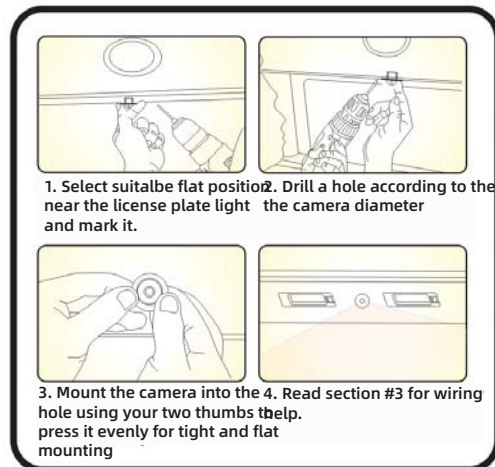


Power Harness

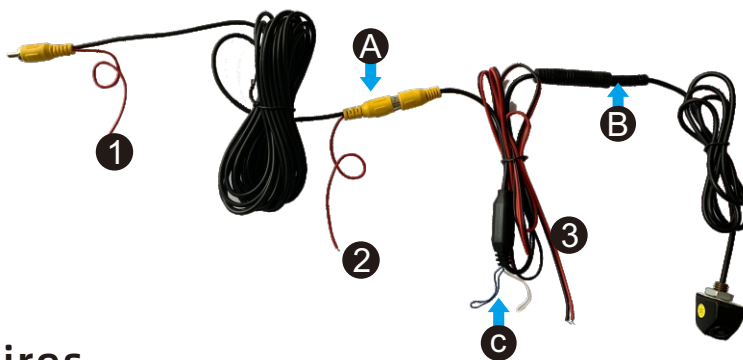
2. SPECIFICATION

- High sensitive 1/4" HD Color CMOS Sensor (1089)
- Reverse/ Non-reverse image selectable
- Parking guide line on/off selectable
- Waterproof (Ip68)
- 170° wide viewing angle
- Super sensitive low Lux performance
- 12VDC (Tolerance 9V ~ 16V)
- Chipset 1089 HD
- Pixel: NTSC/PAL 800x533
- 0.05 Lux

4. Installation Tip



3. WIRING



Trigger wires

- ① To monitor trigger - signals monitor to switch to the backup camera
- ② To reverse backup light positive
- ③ Camera Power
 - Red to reverse backup light positive
 - Black to ground / chassis

Harness / Extension Connection

- Ⓐ Video connector
- Ⓑ Power harness connector

Ⓒ Control Loops

- White loop: reverse image (default)
cut = normal image
- Blue loop: parking guidelines on (default)
cut = parking guidelines off