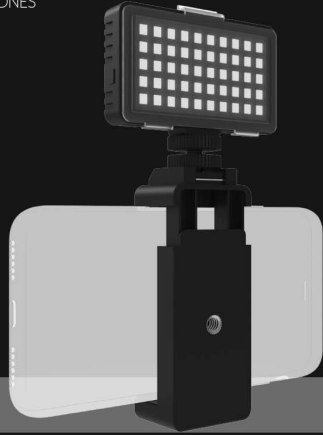


BOWER[®]
SMART PHOTOGRAPHY SERIES

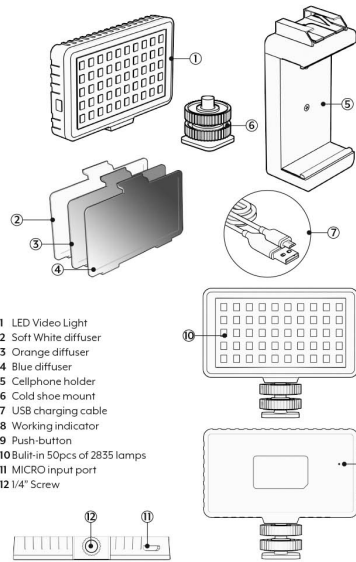
LED VIDEO LIGHT

FOR SMARTPHONES



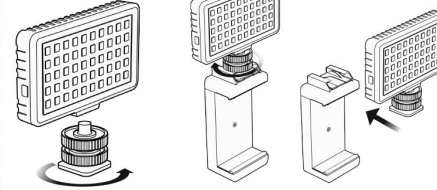
USER
MANUAL

PRODUCT INTRODUCTION PARTS

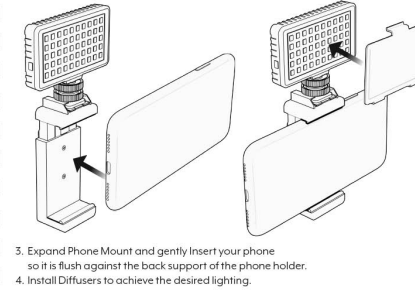


- 1 LED Video Light
- 2 Soft White diffuser
- 3 Orange diffuser
- 4 Blue diffuser
- 5 Cellphone holder
- 6 Cold shoe mount
- 7 USB charging cable
- 8 Working indicator
- 9 Push-button
- 10 Built-in 50pcs of 2835 lamps
- 11 MICRO input port
- 12 1/4" Screw

INSTALLATION

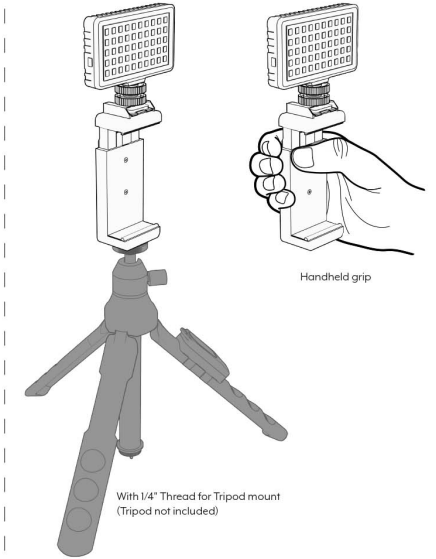


1. Screw the shoe mount adapter to the bottom of the light. Be sure it is secure.
2. Gently slide the shoe mount adapter (with the light attached) into the mount on the top of the phone holder.



3. Expand Phone Mount and gently insert your phone so it is flush against the back support of the phone holder.
4. Install Diffusers to achieve the desired lighting.

INSTALLATION



With 1/4" Thread for Tripod mount
(Tripod not included)

FEATURES

- High-power 50-LED smartphone light
- Provides powerful light for increased luminance
- Super-thin (0.4"), lightweight and pocket-size design
- Cooling, warming and diffusing plates for adjustable color temperature
- Perfect for creating professional videos, as well as, still photography

OPERATION

Turn On / Off

Long press the 'On/Off' button for about 2 seconds to turn LED light on or off

Adjusting the light temperature

Important: Please only attach diffusers on to LED light in "off" mode.
Adjust the light temperature with detachable diffusers (Soft White, Orange, Blue).
Attach the diffusers to the front of the LED light by placing them on to the front of the light and click it in place.
* Do not force diffuser to front of LED light. It should click on easy

Colors achieve the below effects:

- Achieve softer light with the Soft white diffuser
- Increase the warming effect with the Orange diffuser
- Increase the cooling effect with the Blue diffuser

CHARGING:

Connect the micro USB charging cable to the LED body. Charge via USB port on wall charger (not included) or portable battery (not included.)

SPECIFICATION

Charging time	Approx. 120 minutes
Built-in battery	3.7V 500mAh
Max power	3.5W
Luminous flux (brightness)	>350lm (4.2V) (Battery is 4.2V, third level)
Color temperature	6500K (±500K)
Color temperature	Ra>80
Lamp qty	50
Dimming range	Three level brightness
Illumination angle	120°
Battery life	Approx. 40 minutes with continuously working in third rating
Ambient temperature	-10.35~10-60
Working temperature is	-10°C-35°C
Storage temperature is	-10°C-60°C
Input port Micro	Micro input port
Charing current	5V0.5A
Fixed interface	1/4 Screw
Weight	About 30.8g
Size	73 x 42 x 10.5mm

LIMITED One (1) Year Limited Warranty

S. Bower Inc.™ One (1) Year Limited Warranty: This warranty gives you specific legal rights and you may have other rights which vary from state to state.

The S. Bower Inc.™ Limited Warranty is a voluntary manufacturer's warranty provided to the consumer. This warranty provides rights separate to rights provided by consumer law, including but not limited to those relating to non-conforming goods. S. Bower Inc.™ One-Year Limited Warranty benefits are in addition to, and not instead of, rights provided by consumer law and it does not exclude, limit or suspend a buyer's rights arising from consumer law. Consumers have the right to choose whether to claim service under the S. Bower Inc.™ One-Year Limited Warranty or under their consumer law rights. The S. Bower Inc.™ One-Year Limited Warranty terms and conditions shall not apply to consumer law claims, contact your local consumer organization.
Please note: All claims made under the S. Bower Inc.™ One-Year Limited Warranty will be governed by the terms set out in this warranty document.
S. Bower Inc.™ warrants to the product owner that this product will be free against defects in materials and workmanship for a period of ONE (1) YEAR from the date of original retail purchase when used in accordance with S. Bower Inc.™'s user manual. Under this warranty, you will be able to send your claims and defective product to S. Bower Inc.™, via freight prepaid, along with proof of purchase, and will be repaired or replaced, based on S. Bower Inc.™ sole discretion. Repair and/or replacement may be made with new or refurbished product components at S. Bower Inc.™ sole discretion. This limited warranty does not cover failures due to abuse, accidental damage or when repairs have been made or attempted by anyone other than S. Bower Inc.™ personnel. A defective product meeting the warranty conditions set forth herein will be replaced or repaired at no charge in either of two ways: The first, which will result in exchanges only, is to return the product to the retailer from whom it was purchased (provided that the store is a participating retailer). Returns should be made within the time period of the retailer's policy for exchanges. Proof of purchase may be required. Please check with the retailer for its specific return policy regarding time limits for returns or exchanges. The second option is to send the product (prepaid freight) to S. Bower Inc.™ corporate offices located at S. Bower Inc. 46-24 28th Street 3rd Floor Long Island City, NY 11101 for repair or replacement at S. Bower Inc.™'s option. Proof of purchase is required. Include name, return address, and issues that you are experiencing with S. Bower Inc.™ products. All other guarantees, express or implied, are hereby disclaimed.

This warranty does not apply to products sold in countries sold out of the United States.

©2020 S. Bower, Inc. All rights reserved.
All brand names and trademarks belong to their respective owners
S. Bower, Inc. LIC, NY 11101 www.BowerUSA.com