

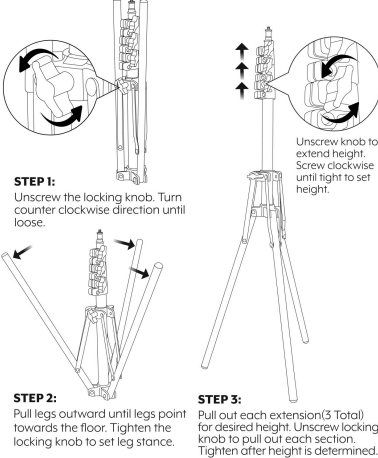


PRODUCT PARTS INTRODUCTION

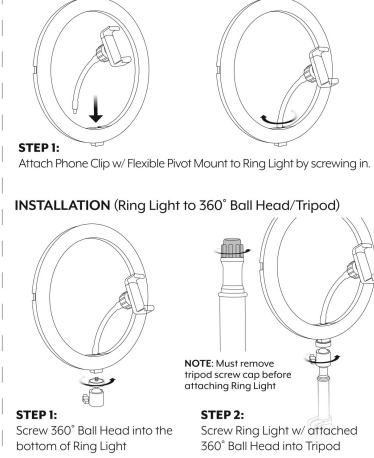


WARNING: Do not try to remove the fixed cable from the Ring Light. It is permanently attached and not removable. May cause damage if forcibly pulled.

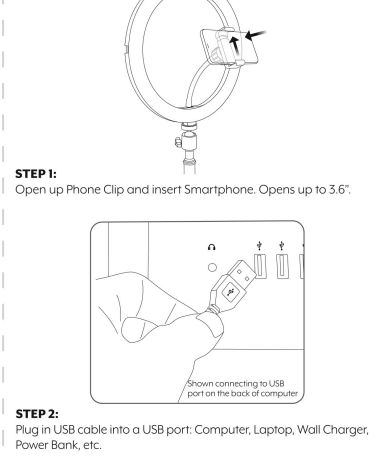
INSTALLATION (Tripod Setup)



INSTALLATION (Phone Clip/Flexible Pivot Mount to Ring Light)



INSTALLATION (Insert Smartphone/Connect to USB Port)



HOW TO USE (In-line Remote Control)
NOTE: RGB Mode Brightness and speed change of RGB Special Effects can ONLY be achieved through the Wireless Remote

Brightness Up/Down
 (8 levels of brightness for White Light Modes)
INCOMPATIBLE WITH RGB MODE

White Light Mode
 Works only with White Light Modes (not for RGB Mode)
 Click repeatedly to Switch betwn 3 White Light Modes
 WHITE NATURAL WARM

RGB Color Mode On/Off Button
 Click repeatedly to change betwn RGB colors/Special Effects

12 RGB Colors/7 RGB Special Effects Button
 Click repeatedly to change betwn RGB colors/Special Effects

On/Off Button
 Click repeatedly to change between the 3 White Light Modes: White, Natural, Warm

Brightness Up
 Works only with White Light Modes (not for RGB Mode)

RGB Mode Button
 Turns ON RGB MODE
 Click repeatedly to change between RGB colors & effects

White Light Timer
 Controls timed lighting
 Only for White Light Modes (not for RGB Mode)

Brightness Down
 Works only with White Light Modes (not for RGB Mode)

RGB White
 White color with battery

Green
 Changes to Green color

Blue
 Changes to Blue color

RGB Brightness
 Controls RGB brightness level
 20%, 50%, 100% Brightness (Not for White Light Modes)

IMPORTANT: Remove clear battery discharge film before use.

Section 15.21
 Changes or modifications to this product are not expressly approved by the party responsible for compliance with the FCC Rules. These limits are designed to provide maximum protection against harmful interference in a residential environment. This equipment generates, uses and can radiate radio frequency energy and, if not installed and used in accordance with the instructions, may cause harmful interference to radio communications. However, there is no guarantee that interference will not occur in a particular installation. If interference does occur, it may be corrected by one or more of the following measures:
 -Reorient or relocate the receiving antenna.
 -Increase the separation between the equipment and receiver.
 -Connect the equipment into an outlet on a circuit different from that to which the receiver is connected.
 -Consult the dealer or an experienced radio/TV technician for help.

HOW TO USE (Wireless Remote Control)
NOTE: RGB Mode Brightness and speed change of RGB Special Effects can ONLY be achieved through the Wireless Remote

On Button
 Click repeatedly to change between the 3 White Light Modes: White, Natural, Warm
TURNS ON WHITE LIGHT MODE

Off Button
 Powers off Ring Light

Speed Button
 Click repeatedly to change speed of RGB special effects

Brightness Up
 Works only with White Light Modes (not for RGB Mode)

Red
 Changes to Red color

RGB Mode Button
 Turns ON RGB MODE
 Click repeatedly to change between RGB colors & effects

White Light Timer
 Controls timed lighting
 Only for White Light Modes (not for RGB Mode)

Brightness Down
 Works only with White Light Modes (not for RGB Mode)

RGB White
 White color with battery

Green
 Changes to Green color

Blue
 Changes to Blue color

RGB Brightness
 Controls RGB brightness level
 20%, 50%, 100% Brightness (Not for White Light Modes)

IMPORTANT: Remove clear battery discharge film before use.

7 RGB SPECIAL EFFECT MODES
 The ring light illuminates 12 different RGB colors and 7 RGB Special Effect lighting modes. Click on the **RGB Mode** button repeatedly to cycle through each RGB color and Special Effect.

FEATURES:

- 12" RGB Ring Light: Choose from twelve (12) different RGB colors, three (3) White Light modes, seven (7) RGB special effect lighting modes, and adjustable brightness.
- Easy to use in-line remote to power on/off and switch to the lighting mode/effect mode you prefer. 12" RGB Ring light makes every photo and video more dynamic and fun.
- Collapsible tripod (16" closed position) stores conveniently, adjustable height extends up to 62".
- Includes Wireless Remote for your convenience.
- Compatible with most smartphones, phone clip opens up to 3.6".
- Great for vlogging, live videos, video chats, social media, live streaming, health and beauty videos, and more.
- USB powered. No battery required, works with most devices that have a USB port: Computer, Laptop, USB Wall Charger, Power Bank, etc.

SPECIFICATION:

| | |
|--------------------|-------------------------------------|
| Power Supply: | USB-5V |
| Input Power: | 15W |
| Color temperature: | 3000 - 6000K |
| Luminous Flux: | 350LM |
| CRI: | 85 |
| Bead Type: | 0.2W/2835 5050 IC |
| Bead Qty: | 96PCS (White Lamp), 40PCS(RGB Lamp) |

DISCLAIMER:
 Please read and follow these instructions.
 This manual should be kept for future reference and maintenance purposes only. Be sure to review the manual and become familiar with its features before using the product. Please make sure to never change the light bulb while plugged into an outlet or other power source. Do not open or change wiring in any way. Keep this product away from children. Open this product only with a soft dry cloth. This product should ONLY be used with rated voltage and frequency. Do not use the line power supply for electrical change. Avoid plugging the power cord into the power cord and do not touch the power cord with wet hands. Never attempt to insert any metal object into the cooling holes or do not touch the fan motor by pulling the power cable. Stop using this product if the unit is damaged, especially the power cord. Do not use in the bath, hot, or near water locale. Please be aware that improper use or inappropriate repair can lead to fire or electrocution. Indirect use only. Please send back to Bower or contact customer service for issues regarding maintenance or repair. Make sure everything is secure before proceeding. Make sure the product is intact and that there are no missing parts. All photos and illustrations are for instruction purposes only.

LIMITED One (1) Year Limited Warranty
S. Bower Inc.™ One (1) Year Limited Warranty: This warranty gives you specific legal rights and you may have other rights which vary from state to state.
 The S. Bower Inc.™ Limited Warranty is a voluntary manufacturer's warranty provided to the consumer. This warranty provides rights separate to rights provided by consumer law, including but not limited to those relating to non-conforming goods. S. Bower Inc.™ One-Year Limited Warranty benefits are in addition to, and not instead of, rights provided by consumer law and it does not exclude, limit or suspend a buyer's rights arising from consumer law. Consumers have the right to choose whether to claim service under the S. Bower Inc.™ One-Year Limited Warranty or under their consumer law rights. The S. Bower Inc.™ One-Year Limited Warranty terms and conditions shall not apply to consumer law claims; contact your local consumer organization.
 Please note: All claims made under the S. Bower Inc.™ One-Year Limited Warranty will be governed by the terms set out in this warranty document.
 S. Bower Inc.™ warrants to the product owner that this product will be free against defects in materials and workmanship for a period of ONE (1) YEAR from the date of original retail purchase when used in accordance with S. Bower Inc.™ user manual. Under this warranty, you will be able to send your claims and defective product to S. Bower Inc.™, via freight prepaid, along with proof of purchase, and will be repaired or replaced, based on S. Bower Inc.™ sole discretion. Repair and/or replacement may be made with new or refurbished product components of S. Bower Inc.™ sole discretion. This limited warranty does not cover failures due to abuse, accidental damage or when repairs have been made or attempted by anyone other than S. Bower Inc.™ personnel. A defective product meeting the warranty conditions set forth herein will be replaced or repaired at no charge in either of two ways: The first, which will result in exchanges only, is to return the product to the retailer from whom it was purchased (provided that the store is a participating retailer). Returns should be made within the time period of the retailer's policy for exchanges. Proof of purchase may be required. Please check with the retailer for its specific return policy regarding time limits for returns or exchanges. The second option is to send the product (prepaid freight) to S. Bower Inc.™ corporate offices located at S. Bower Inc. 46-24 28th Street 3rd Floor Long Island City, NY 11101 for repair or replacement at S. Bower Inc.™'s option. Proof of purchase is required. Include name, return address, and issues that you are experiencing with S. Bower Inc.™ products. All other guarantees, express or implied, are hereby disclaimed.
This warranty does not cover products sold outside of the United States.

©2021 S. Bower, Inc. All rights reserved.
 All brand names and trademarks belong to their respective owners
 S. Bower, Inc. LIC, NY 11011 www.bowerusa.com