



.....

APPROACH[®] S42

GPS GOLF SMARTWATCH

NEW PRODUCT ANNOUNCEMENT

OVERVIEW | FEATURES | COMPARISON | CONFIGURATIONS
SPECIFICATIONS | MERCHANDISING | COURSE COVERAGE | COMPATIBILITY

.....

MARKETING MEMO

March 16, 2021

APPROACH® S42

NEW PRODUCT
ANNOUNCEMENT



PRODUCT OVERVIEW:

We've got your game on and off the course with Approach S42, a GPS golf smartwatch that puts information from more than 42,000 CourseView maps worldwide on your wrist. The Green View feature allows manual pin positioning so you can quickly reference distances to the front, middle and back of the green as well as hazards and doglegs. The AutoShot round analyzer measures and auto-records detected shot distances¹; pair with optional Approach® CT10 club tracking sensors (sold separately) for more automatic game tracking capabilities. Pair with the Garmin Golf™ app² for strokes gained analysis, to participate in leaderboards and tournaments and gain more insights into your game. Wear the watch all day to get smart notifications³, track your steps and sleep⁴, and utilize our built-in sports apps for running, cycling and walking to stay fit for your golf game.



KEY FEATURES:

STYLISH GPS GOLF SMARTWATCH	Stylish and lightweight GPS golf smartwatch with large 1.2" easy-to-read color touchscreen display and metal bezel
PRELOADED COURSES	More than 42,000 full-color CourseView maps preloaded from around the world; download updates for the course you play most often
AUTOSHOT GAME TRACKING	AutoShot round analyzer measures and auto-records detected shot distances ¹ and pairs with optional Approach® CT10 club tracking sensors (sold separately) for more automatic game tracking capabilities
PRECISE YARDAGE	Quickly gets your location using high-sensitivity GPS to show precise yardages to front, middle and back of the green, hazards, doglegs, layups and more; you can also measure yardages for shots played from anywhere on the course
GREEN VIEW FEATURE	The Green View feature gives you each green's true shape from wherever you are on the course, and it allows you to drag-and-drop the pin for greater accuracy
GARMIN GOLF™ APP	Pair with the Garmin Golf app ² for live scoring, automatic scorecard uploads and to review all your stats in one place (more details on page 6)
SCORECARD	Features a digital scorecard with Stableford scoring; automatically uploads scorecards to Garmin Golf app
SMART NOTIFICATIONS	Receive emails, texts and alerts right to your watch when paired with a compatible smartphone ³
STAY FIT	Activity tracking features ⁴ , including steps, calories, sleep monitoring and a move bar
GET ACTIVE	Offers built-in sports apps such as running, cycling, walking and more to track all of your activities and progress
BATTERY LIFE	Rechargeable battery lasts up to 15 hours with GPS and up to 10 days in smartwatch mode
QUICK RELEASE BANDS (20 MM)	Adjustable quick release bands in silicone, leather, nylon, suede or Milanese let you stay stylish and sport-ready; simply remove the bands with a slide of the bar, and pop on different bands for the ultimate personal accessory (sold separately)

PRECISE YARDAGE

GREEN VIEW

AUTOSHOT

**CLUB TRACKING
(WITH APPROACH CT10)**

HAZARDS

**ANALOG
WATCH FACE**



**SMART
NOTIFICATIONS**

**ACTIVITY
TRACKING**

**WEATHER
WIDGET**




MENU

SCORECARD

**DIGITAL
WATCH FACE**



PRODUCT COMPARISON:

	APPROACH S12	APPROACH S42	APPROACH S62
			
Preloaded courses with map updates	42,000 worldwide	42,000 worldwide	42,000 worldwide
High-resolution, sunlight-readable display	1.3" square	1.2" round	1.3" round
High-sensitivity GPS	•	•	•
Yardages to front, back and middle of green	•	•	•
Measures shot distances; layup/dogleg distances	•	•	•
Hazards/course targets	•	•	•
Digital scorecard	•	•	•
Color touchscreen		•	•
Green View feature with manual pin positioning	•	•	•
Stat tracking	•	•	•
AutoShot game tracking ¹		•	•
Activity tracking ⁴ /multisport profiles		•	•
Smart notifications ³		•	•
CourseView auto updater	•	•	•
Compatibility with Approach® CT10 club trackers	•	•	•
Compatibility with Garmin Golf™ app ²	•	•	•
Full-color course maps		•	•
Touch Targeting feature		•	•
Advanced swing metrics		•	•
PinPointer feature		•	•
PlaysLike Distance feature		•	•
Virtual Caddie feature		•	•
Wind speed/direction data		•	•
Hazard View		•	•
Wrist-based heart rate ⁴		•	•
Pulse Ox sensor ⁵		•	•
Garmin Pay™ contactless payment solution		•	•
Water rating ⁶	5 ATM	5 ATM	5 ATM
Compatible interchangeable bands	Quick release bands (20 mm)	Quick release bands (20 mm)	QuickFit® 22 bands
Battery type/life	Rechargeable Li-ion 30 hrs (golf)/15 weeks (watch)	Rechargeable Li-ion 15 hrs (golf)/10 days (watch)	Rechargeable Li-ion 20 hrs (golf)/14 days (watch)

APPROACH® S42

**NEW PRODUCT
ANNOUNCEMENT**

PRODUCT CONFIGURATIONS:

SCHEDULE B: 8517620050
HTS: 8517.62.0090

APPROACH S42



AVAILABLE	INCLUDES	COUNTRY OF ORIGIN
Now	Approach S42, charging/data cable, documentation	Made in Taiwan. Cable made in China or Taiwan.

DESCRIPTION	SKU	UPC	MRP (USD)	MRP (CAD)
Gunmetal with black band	010-02572-10	753759273118	\$299.99	\$389.99
Polished silver with white band	010-02572-11	753759273125	\$299.99	\$389.99
Rose gold with light sand band	010-02572-12	753759273132	\$299.99	\$389.99

PHYSICAL SPECIFICATIONS:

Unit dimensions:	1.7" x 1.7" x 0.46" (43.4 x 43.4 x 11.7 mm)
Sizing (Circumference):	Black band = fits wrists with circumferences of 125-202 mm White and light sand bands = fits wrists with circumferences of 106-176 mm
Weight:	1.5 oz (43 g)
Lens material:	Chemically strengthened glass
Bezel material:	Metal
Display size:	1.2" (30.4 mm) diameter
Display resolution:	240 x 240 pixels
Display type:	Color, touchscreen, sunlight-visible, transfective memory-in-pixel (MIP)

Battery type:	Internal rechargeable lithium-ion battery
Battery life:	Smartwatch mode: up to 10 days GPS mode: up to 15 hours
Water rating:	5 ATM/50 meters ⁵
Connectivity:	BLUETOOTH® technology
Watch band:	Includes 20 mm quick release silicone band with removable, hinged design; Quick Release Bands (20 mm) accessory compatible (sold separately)

PACKAGING SPECIFICATIONS:



	APPROACH S42
Gift box dimensions (WxHxD):	4.4" x 4.2" x 3.1" (11.2 x 10.7 x 7.9 cm)
Gift box weight:	8 oz (227 g)
Master carton dimensions (WxHxD):	14.4" x 14.3" x 14.4" (36.7 x 36.2 x 36.7 cm)
Master carton weight:	22 lbs (10 kg)
Master carton quantity:	36

APPROACH® S42

NEW PRODUCT ANNOUNCEMENT

PRODUCT COPY:

Product copy for Approach S42 can be downloaded from the [Dealer Resource Center](#).

VIDEO:



[APPROACH S42: PLAY WITH CONFIDENCE](#)

GARMIN GOLF™ APP:

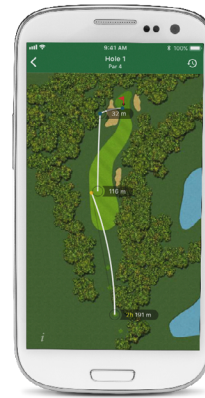


COMPETE, COMPARE AND CONNECT

The free [Garmin Golf](#) app brings more fun, stats and competition to your game.

FEATURES INCLUDE THE FOLLOWING:

- Give each round a tournament feel as you compete with friends and other golfers on any of more than 42,000 courses worldwide
- Includes strokes gained analysis to improve your game plus additional stat tracking for select Garmin devices
- Set up your own tournament event, and invite multiple friends to compete
- Players can post their results and compare data, rankings and stats in the app
- Even if you don't have a Garmin device, use the app to participate in weekly leaderboards and tournaments, and enter your scores and stats manually



MERCHANDISING:

DUMMY UNITS



Gunmetal: **010-M2572-00**
 Polished silver: **010-M2572-01**
 Rose gold: **010-M2572-02**

ACRYLIC PEDESTAL



This display is designed for small, narrow spaces and should be used inside a glass case. When featuring multiple products, pedestals may be merchandised side by side. Use with a dummy unit and small product card, both ordered separately.

SKU: **M00-10769-00**
 Size: **2.875" W x 2.875" D x .709" H**

TRAY KIT SYSTEM



This display is great for small spaces and should be used inside a glass case. It displays up to two Garmin dummy units on each tray kit. For larger product assortments, tray kits may be merchandised side by side. Use with dummy units, small product cards, medium product cards, common features product cards, brackets, graphic back panels and trays, all ordered separately.

GOLF GRAPHIC BACK PANEL FOR THE TRAY KIT



This is one panel with artwork shown on both sides.

SKU: **M00-10738-00**
 Size: **7" W x 9" H**

SMALL TRAY



SKU: **M00-00527-00**
 Size: **7" W x 6" H**

MERCHANDISING:

ACRYLIC NONPOWERED FREESTANDING DISPLAY WITH WHEELS



This display ships as one full piece with wheels, is nonpowered, great for small narrow spaces and includes a lock and key. These displays are fully customizable and fit a variety of Garmin products. It displays up to 12 Garmin dummy units. Use with dummy units, small product cards, medium product cards, common features product cards, brackets and the graphic backer, all ordered separately.

Contact your inside sales rep or order administration representative to place an order for the display if you meet the order requirements.

SKU: **M00-10756-00**
 Size: **16" W x 15" D x 68.5" H** (approximately)
 Delivered by FedEx Freight
 Weight on pallet: **150 lbs** (approximately)
 Dimensions on pallet: **48" W x 40" D x 80" H** (approximately)

GOLF GRAPHIC BACKER FOR THE ACRYLIC NONPOWERED FREESTANDING DISPLAY



Customize your acrylic display with this magnetic graphic backer that is easy to install on the inside of the case door.

SKU: **M00-00544-01**
 Size: **14.35" W x 35" H**

INTERCHANGEABLE MERCHANDISING COMPONENTS THAT CAN BE USED ON THE PEDESTALS, TRAY KITS AND THE ACRYLIC NONPOWERED FREESTANDING DISPLAY:

APPROACH S42 SMALL PRODUCT CARD

SKU: **M00-00826-00**
 Size: **2.5" W x 2" H**



APPROACH S42 MEDIUM PRODUCT CARD

SKU: **M00-00826-01**
 Size: **3.25" W x 3.5" H**



TRAY KIT/ACRYLIC DISPLAY COMMON FEATURES PRODUCT CARD - GOLF

SKU: **M00-00817-04**
 Size: **6.75" W x 4" H**



WEARABLES BRACKET

SKU: **M00-10751-00**
 Size: **1.5" W x 4" H**



GARMIN BRANDED GRAY COUNTERTOP/FREESTANDING VIDEO DISPLAY

Order these components to build your Garmin branded gray countertop/ freestanding video display: dummy units, brackets, SD™ card, product card, common features product card and graphic. You can also order these components to update your existing countertop or freestanding display.

Contact your inside sales rep or order administration representative to place an order for the components or full display if you meet the order requirements.

Countertop display size:
12" W x 17.75" T x 14" D



Freestanding display size:
24" W x 60" T x 20" D

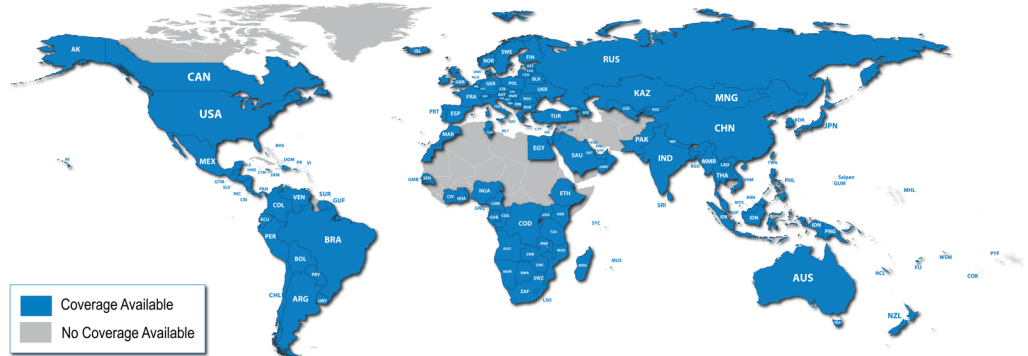


Final artwork is subject to change from images shown in the merchandising section. For more information on merchandising, please visit the Dealer Resource Center at Garmin.com.

COURSE COVERAGE:

Approach S42 comes ready to use right out of the box, preloaded with more than **42,000** golf courses around the world. Just turn it on, and start playing. And you won't pay for course updates or additions — or any subscriptions or fees.

Download all updates at Garmin.com/express. Updates are added multiple times a year.



COMPATIBLE PRODUCT OVERVIEW:

APPROACH® CT10

Automatic Club Tracking System



Pair your Approach S42 golf watch with the Approach CT10 golf club trackers for automatic game tracking so you can focus on your game — knowing the sensor is tracking every stat. Those stats for each club with a sensor installed show up on your Garmin golf watch after pulling the club from the bag. See how far you typically hit that club, and view stats for accuracy to the fairway or green.

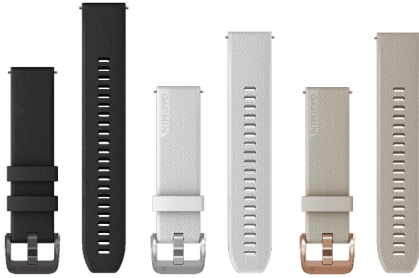
Approach CT10 club trackers are available in a full set to track all 14 clubs in your bag or as a 3-pack starter set.

DESCRIPTION	SKU	UPC	MSRP (USD)
Approach CT10, full set (14)	010-01994-00	753759206512	\$299.99
Approach CT10, starter pack (3)	010-01994-01	753759206529	\$79.99

COMPATIBLE ACCESSORY OVERVIEW:

QUICK RELEASE 20 WATCH BANDS

Stay stylish and sport-ready with these adjustable 20 mm quick release bands for your Approach S42 golf watch. Simply remove the bands with a slide of the bar, and pop on different bands for the ultimate personal accessory. To view all compatible quick release 20 watch bands, click [here](#).



	DESCRIPTION	SKU	UPC	MSRP (USD)
NEW	Black silicone with gunmetal hardware	010-13114-00	753759274719	\$29.99
NEW	White silicone with polished silver hardware	010-13114-01	753759274726	\$29.99
NEW	Light sand silicone with rose gold hardware	010-13114-02	753759274733	\$29.99

	SKU	UPC	MSRP	DESCRIPTION	IMAGE
CHARGING/DATA CABLE (0.5 M)	010-12491-01	753759176860	\$24.99	Connect this cable to your computer's USB port to recharge your watch and to transfer data to and from your computer.	
VEHICLE CHARGING ADAPTER	010-11936-00	753759995454	\$28.00	This adapter lets you charge or power your watch while on the move. Use with your charging/data cable.	

¹Lie and ball contact may affect shot tracking. Putts are not tracked. Some shots, particularly chip shots around the green, may not be tracked.

²Requires app on your compatible smartphone paired to the Approach S42

³When paired with a compatible smartphone; see [Garmin.com/ble](#)

⁴See [Garmin.com/ataccuracy](#)

⁵This is not a medical device and is not intended for use in the diagnosis or monitoring of any medical condition; see [Garmin.com/ataccuracy](#). Pulse Ox not available in all countries.

⁶See [Garmin.com/waterrating](#)

App Store is a service mark of Apple Inc.

Google Play and the Google Play logo are trademarks of Google LLC.

The Bluetooth® word mark and logos are owned by the Bluetooth SIG, Inc. and any use of such marks by Garmin is under license.

Please note: The ECCNs and Classification numbers provided represent the opinion of Garmin International, Inc. of the proper classifications for the products today (based on the original software and/or original hardware). Classifications are subject to change. Under the U.S. export regulations, the U.S. Government assigns your organization or client, as exporter/importer of record, the responsibility for determining the correct classification of any item at the time of export/import. Depending on the products, the customer, or the country of destination, an export license may be required by the Department of Commerce prior to shipment. The Department of Commerce's Bureau of Industry and Security (former Bureau of Export Administration) website (<http://www.bis.doc.gov>) provides information that might be useful to you in determining whether you need to obtain a license for a particular shipment. To be clear, if an item described above does require a validated export license, it would be the exporter's responsibility to obtain this license prior to exportation.