

43mm

7.5mm

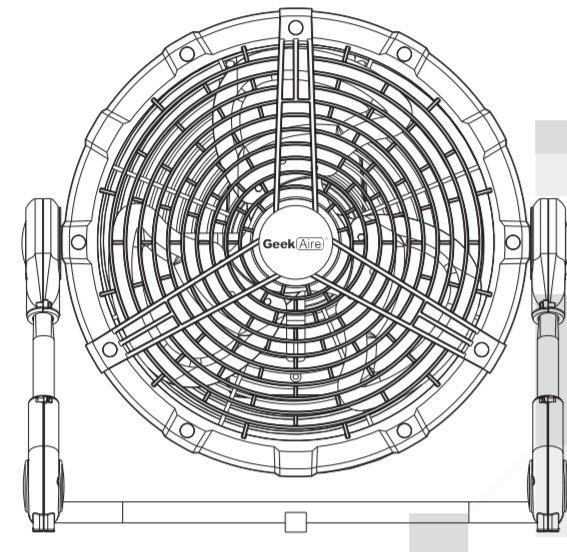
103mm

18.5mm

GeekAire®

12-inch Outdoor Rechargeable Fan

User Manual
Model No.:CF100



Toll Free: 1-844-801-8880
IMPORTANT: Read instructions thoroughly before operating.
Keep manual for future reference.

Table of contents

IMPORTANT SAFETY INSTRUCTIONS	2-3
PRODUCT COMPONENTS	4
HOW TO USE	5-6
SPECIFICATION	7
TROUBLESHOOTING	8-9
CLEANING AND STORAGE	10
LIMITED WARRANTY	11

IMPORTANT SAFETY INTRODUCTIONS

This fan is designed to be powered by a 26 volt AC/DC power adapter or the Li-Ion battery pack built in the product. Do not attempt to use with any other power supply.

- When using this product, please refer to the description in this manual. Other unauthorized use may cause fire, electric shock, or injury.
- Please keep fan out of children's reach. This product is not for children to use without supervision.
- Please turn off the fan when moving.
- Place the fan on a horizontal and stable surface to avoid overturning.
- When using the fan, do not put fingers, pens, or other objects into the net cover.
- Unplug and turn off power before cleaning this fan.
- Do not disassemble, modify, or use for other purposes.
- Do not expose the battery to liquids, exposure will cause battery malfunction.
- Do not plug the charger into the power socket with wet hands.
- Do not operate the fan without the protection of the mesh cover, as it may cause serious personal injury.
- If the charger or power cord is damaged, it must be replaced by the manufacturer, or its service agents, or a person with similar qualification to avoid danger.
- The charger provided by us is special, and no other charger can be used.
- Please do not use the charger provided by us to charge other products, because the charger is designed for specific use.
- In order to reduce the risk of fire or electric shock, please do not use any solid-state device to control the fan.
- Before inserting the power supply, make sure that the voltage and frequency of the power supply are the same as those shown on the charger label.
- Do not put this fan near fire, because there is a battery in the fan, which may cause explosion.
- The continuous charging time shall not exceed 24 hours, and the charger should be unplugged after charging.
- Do not modify the fan battery.
- Fan abnormal automatic protection. Over current protection parts are installed on the main circuit board of the fan. When the current of the motor is too large due to various accidents, the over protection program on the circuit board will start, and will cut off the power supply of the fan. The temperature of the motor will not continue to rise, and the fan will not have the danger of part deformation and combustion.
- Do not forget to shut down and charge.
- Do not incinerate this fan and its batteries, even if it is severely damaged. The batteries can explode in a fire.
- Do not incinerate this fan, even if it is severely damaged. The batteries can explode in a fire. Dispose of the fan in accordance with the following instructions: (instructions for disposal of the product).

Safety Introductions

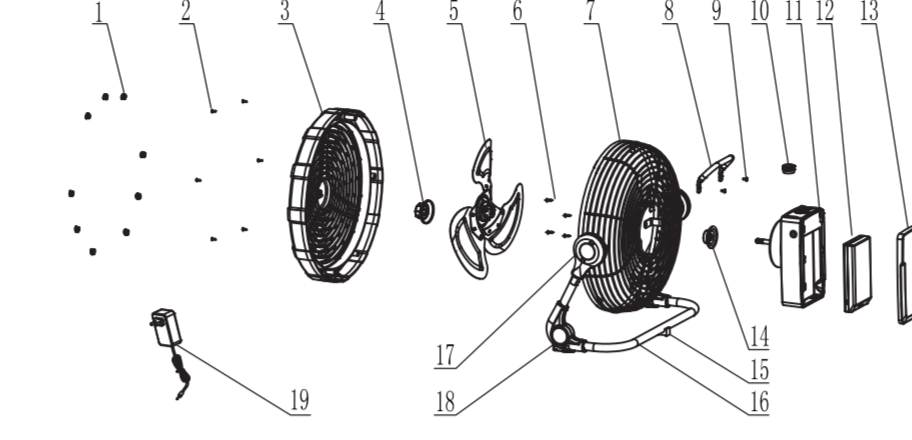
We actively encourage you to participate in the electronic recycling program, so please properly dispose of waste electronic products in accordance with local regulations, and do not treat the products as household garbage.

Additional Notes

- The charging can only be completed indoors. Please plug the water-proof silicone cover in the charging port when using outdoors.
- Before cleaning, please disconnect the power supply and do not disassemble or open the rotor guard to clean the rotor blades.
- Children aged 8 years and over, people with reduced physical, sensory or mental ability or lack of experience and knowledge, who have received supervision or guidance on the safe use of the device and understand the risks involved, can use the device. Children are not allowed to play with the appliance. Children are not allowed to clean, use and maintain without supervision. Children under 8 years old are not allowed to touch the appliance or its power cord.
- When the battery is not in use, please keep away from other metal objects, such as paper clips, coins, keys, nails, screws or other small metal objects. These metal objects can be connected from one terminal to the other, and shorting the battery terminals together may cause sparks, burns or fires.
- It is recommended that the fan and its battery are kept away from fire, even if it is not seriously damaged, because the battery may explode due to the fire.
- The user is not allowed to dismantle and replace the internal parts of the fan. In case of any fault, the user must contact the after-sales service department for maintenance.
- Don't forget to shut down and charge.
- During the operation of the product, when the electric quantity drops from the previous level to the next level, the upper level electric lamp may flicker and then go out, which is a normal phenomenon.

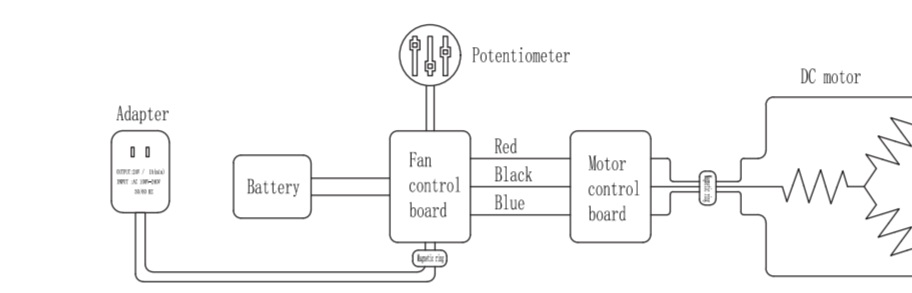
Safety Introductions

Product components



- | | | |
|-------------------|------------------------------------|------------------------|
| 1. screw plug | 8. Handle | 14. Waterproof bushing |
| 2. Fixing screw | 9. screw | 15. Rear rubber foot |
| 3. Fan front net | 10. switch knob | 16. Base |
| 4. Tighten nut | 11. Waterproof battery compartment | 17. Ornamental knob |
| 5. Blade assembly | 12. Detachable battery | 18. Front glue foot |
| 6. screw | 13. Battery compartment | 19. Adapter |

Electrical principle diagram



How to use

- Before use, please check whether the voltage and frequency on the adapter nameplate conform to the local power supply (working voltage is 100~240v / 50-60Hz).
- Select the wind speed by turning the switch according to the graphic indication of the control panel. This product is stepless speed regulation. After the fan is turned on, the indicator point of the knob rotates from "-" symbol to "+", and the wind speed increases gradually (it should be noted that the wind speed will be delayed for about 1 second after the knob is fixed).
- Before use, please push up the back cover of the waterproof battery compartment according to the prompts, remove the back cover and insert the detachable battery (when opening the box for the first time, the detachable battery is on the top of one side of the package accessories and packed in a separate paper box), and then install the back cover in the original way. At this time, turn on the fan. It can be seen that the five indicator lights on the control panel and the figure indicate the remaining power of the battery. Connect the power supply at the side of the waterproof box through the adapter matched with the product. When using the adapter to charge the product, please connect the product charging connector first, and then connect the external power supply. When charging, the power indicator corresponding to the remaining power will be in stroboscopic state. When the power is full, the power indicator on the top of the control box will be on. After about 50 minutes, the power indicator will be off (when the power is full, the power indicator will be off).
- When the fan battery has more than 20% power, connect the mobile phone at the mark at the bottom of the waterproof box through the matching charging line of the mobile phone, and then charge the mobile phone. When charging, unplug the USB waterproof plug, and connect the mobile phone through the USB socket.
- The built-in battery of this product is detachable. According to the prompt steps, the removed battery pack can be used as a mobile power bank. There is a power display activation button on the side of the split battery. Press the activation button, and the remaining power will be displayed on the top 5 warning lights of the battery, which are 20% - 100% of the average power. After pressing the activation button, the power light will be off if there is no operation within 10 seconds. There is a DC charging plug at the bottom of the battery, which can be charged by connecting the power supply through the product matching adapter. When the battery is charged, the power indicator light corresponding to the remaining power will be blinking, and the power indicator light at the top of the battery pack will be fully on (not off). When the battery has more than 20% power, connect the mobile phone at the USB interface at the bottom of the battery through the mobile phone matching charging line to charge the phone.
- After the product is discharged, if you need to take off the battery pack for separate charging, please press the battery pack activation button to erase the battery capacity memory before charging the battery pack separately.
- Within the set range, the fan can adjust the pitch angle arbitrarily by pushing the fan head.

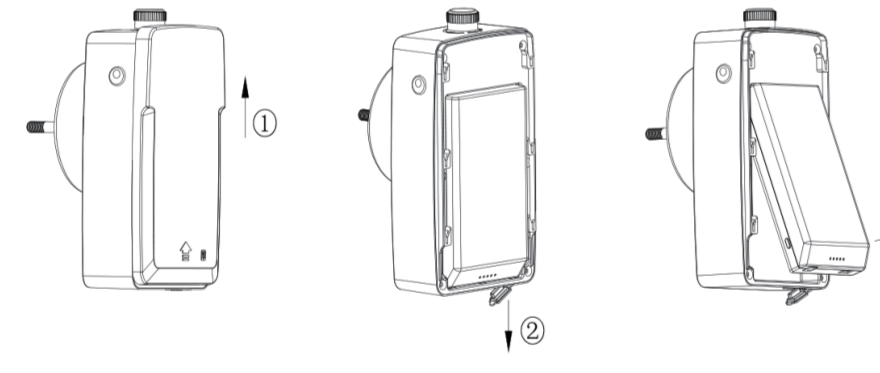
How to use

Product components

6

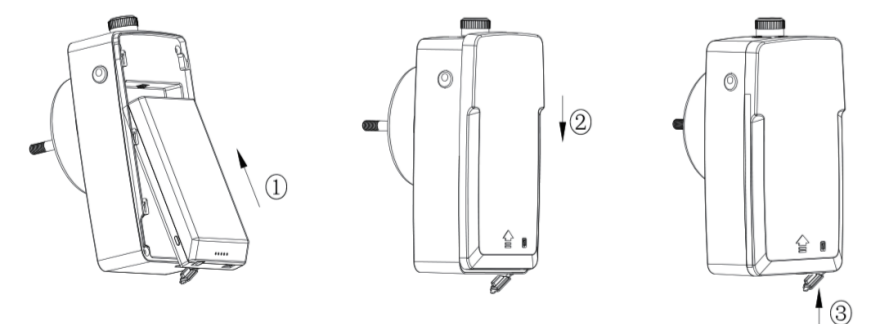
Detaching the battery

- Push up the back cover of waterproof box and take down the back cover.
- Uncover the bottom USB waterproof silicone cover.
- Hold both sides of the bottom of the battery (beveled side) and pull out the battery outwards.



installing the battery

- Take the battery by hand, first push and slide it into the battery slot from the battery head.
- The rear cover is slightly misaligned upward (about 5mm), and then pushed down and fastened.
- Close the bottom USB waterproof silicone cover.



How to use

7

Specification

Model name	CF100
Power supply	26V/1.4A Constant current adapter power supply
Fan head size	12 inch
Run current (A)	<1.2
Rotation speed (RPM)	1700±150
Air flow (CFM)	1500
wind speed (m/s)	5.6
Full charge time (h)	2~3
Running time (H)	3~23
Net weight (KG)	3.05±20%
Battery capacity	2500mAh*6
Product dimensions	16.3*8.1*16.1 inch

Specification

8

Troubleshooting

Problem	Phenomenal description	Causes	Solution
* Open fan and not working	Power indicator is not on, and fan does not turn	The battery is dead	Use the adapter after charging
	The power indicator is on, and the fan does not turn on	Motor damage Motor terminal loose	(After-sale repairing) (After-sale repairing)
	Fan only works with adapter	The battery is dead	(After-sale repairing)
* No charge / insufficient charge	Charging indicator is not on	Power socket failure and power failure Adapter damaged	Replace the power socket / check whether the power line is normal Replace adapter
	Charging indicator is on after sufficient charge	The battery is dead	(After-sale repairing)
* Adapter overheated during charging	The adapter is overheated during charging	Poor contact between adapter and socket Adapter damaged	Replacement socket Replace adapter
	Battery power is less than 100%	Charging time less than 2.5 hours	Recharge for more than 2.5 hours
* Fan endurance too short	The operation time after full charge is obviously less than the normal time	The battery is dead	(After-sale repairing)
	Normal service life of battery is over 1 year	The battery is dead	(After-sale repairing)
	After battery power consumption, the battery is not fully charged before storage and the storage time is more than 6 months	The battery is dead	(After-sale repairing)

Troubleshooting

9

Troubleshooting

* Abnormal blade rotation	When the fan blades rotate, they rotate fast or slow, or they do not rotate when they rotate	Insufficient electricity (red light lit up)	Recharge for more than 2.5 hours
	When the fan blades rotate, they rotate fast or slow or do not rotate (the power is more than 20% or sufficient)	PCBA is damaged	(After-sale repairing)
* Automatic work	Normal operation of the switch does not control the function	PCBA is damaged	(After-sale repairing)
* Abnormal power indicator	One or more power indicator lights flicker continuously, and the switch operation has no function	PCBA is damaged	(After-sale repairing)
* USB does not charge the phone	Connecting USB cable to charge mobile phone has no response	Poor USB cable interface Less than 20% power	Replacement of USB line Charge to more than 20%
	There is no problem with the above two kinds of fault causes, but it still cannot be charged	PCBA is damaged	(After-sale repairing)

Troubleshooting

10

Cleaning and storage

- Before cleaning the product, make sure that the power supply of the product has been cut off.
- Use a soft cloth moistened with detergent or alcohol to clean the oil and dust stains (never use gasoline or other corrosive liquid to plastic and paint).
- When the product is not used, it shall be placed in a dry and ventilated environment.
- When the product is not used for a long time, it should be charged within 3 months.

CLEANING AND STORAGE

11

LIMITED WARRANTY

HOME EASY LTD warrants to the original consumer or purchaser this GeekAire 12-inch outdoor rechargeable fan, "Product" is free from defects in material or workmanship for a period of one (1) year from the date of purchase. If any such defect is discovered within the warranty period, HOME EASY LTD, at its discretion, will repair or replace the Product at no cost. This limited warranty is good only to the original purchaser of the product and effective only when used in United States.

For warranty or repair service: Call 1-844-801-8880 and choose the appropriate prompt, or email info@homeeasy.net. Please have your Product's model number, your name, address, city, state, zip code and phone number ready.

NO OTHER WARRANTY IS APPLICABLE TO THIS PRODUCT. THIS WARRANTY IS IN LIEU OF ANY OTHER WARRANTY, EXPRESS OR IMPLIED, INCLUDING WITHOUT LIMITATION, ANY WARRANTY OF MERCHANTABILITY OR FITNESS FOR A PARTICULAR PURPOSE. TO THE EXTENT ANY IMPLIED WARRANTY IS REQUIRED BY LAW, IT IS LIMITED IN DURATION TO THE EXPRESS WARRANTY PERIOD ABOVE. NEITHER THE MANUFACTURER NOR ITS U.S. DISTRIBUTOR SHALL BE LIABLE FOR ANY INCIDENTAL, CONSEQUENTIAL, INDIRECT, SPECIAL, OR PUNITIVE DAMAGES OF ANY NATURE, INCLUDING WITHOUT LIMITATION, LOST REVENUES OR PROFITS, OR ANY OTHER DAMAGE WHETHER BASED IN CONTRACT, TORT, OR OTHERWISE, SOME STATES AND/OR TERRITORIES DO NOT ALLOW THE EXCLUSION OR LIMITATION OF INCIDENTAL OR CONSEQUENTIAL DAMAGES OR LIMITATIONS ON HOW LONG AN IMPLIED WARRANTY LASTS. SO THE ABOVE EXCLUSION OR LIMITATION MAY NOT APPLY TO YOU. THIS WARRANTY GIVES YOU, THE ORIGINAL PURCHASER, SPECIFIC LEGAL RIGHTS AND YOU MAY ALSO HAVE OTHER RIGHTS THAT VARY FROM STATE TO STATE OR TERRITORY TO TERRITORY.

THIS LIMITED WARRANTY DOES NOT APPLY TO

- Failure of product to perform during power failures and interruptions or inadequate electrical service
- Damage caused by transportation or handling.
- Damage caused to the product by accident, vermin, lightning, winds, fire, floods, or acts of God.
- Damage resulting from accident, alteration, misuse, abuse, or improper installation, repair, or maintenance. Improper use includes using an external device that alters or converts the voltage or frequency of electricity
- Any unauthorized product modification, repair by unauthorized repair center, or use of non-approved replacement parts.
- Normal maintenance as described in the User's Guide, such as cleaning or replacing filters, cleaning coils, etc.
- Use of accessories or components that are not compatible with this product.

The cost of repair or replacement under these excluded circumstances shall be borne by the consumer.

LIMITED WARRANTY

148mm

封底



LIMITED WARRANTY

Home Easy Ltd.
1275 Brownfields Ave
Portland, NJ 07064
Toll Free: 1-844-801-8880

210mm