

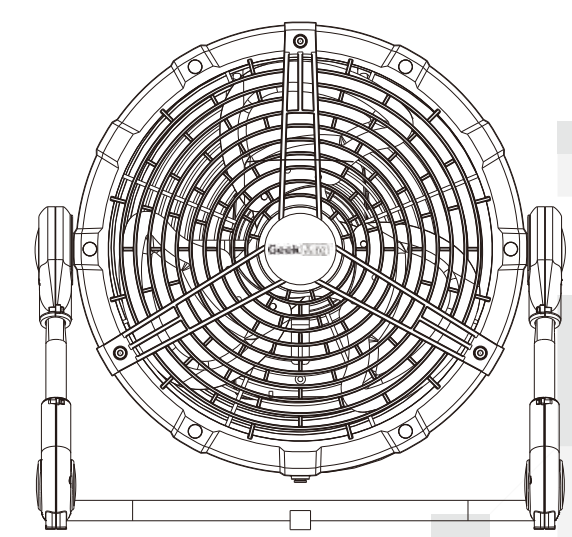
43mm
7.5mm

103mm

18.5mm

GeekAire®
12-inch Outdoor Rechargeable Misting Fan

User Manual
Model No.:CF100M



Toll Free: 1-844-801-8880
IMPORTANT: Read instructions thoroughly before operating.
Keep manual for future reference.

Table of contents

IMPORTANT SAFETY INSTRUCTIONS	2-3
PRODUCT COMPONENTS	4
HOW TO USE	5-8
SPECIFICATION	9
TROUBLESHOOTING	10-11
CLEANING AND STORAGE	12
LIMITED WARRANTY	13

IMPORTANT SAFETY INTRODUCTIONS

This fan is designed to be powered by a 26 volt AC/DC power adapter or the Li-ion battery pack built in the product. Do not attempt to use with any other power supply.
1. When using this product, please refer to the description in this manual. Other unauthorized use may cause fire, electric shock, or injury.
2. Please keep fan out of children's reach. This product is not for children to use without supervision.
3. Please turn off the fan when moving.
4. Place the fan on a horizontal and stable surface to avoid overturning.
5. When using the fan, do not put fingers, pens, or other objects into the net cover.
6. Unplug and turn off power before cleaning this fan.
7. Do not disassemble, modify, or use for other purposes.
8. Do not expose the battery to liquid, exposure will cause battery malfunction.
9. Do not plug the charger into the power socket with wet hands.
10. Do not operate the fan without the protection of the mesh cover, as it may cause serious personal injury.
11. If the charger or power cord is damaged, it must be replaced by the manufacturer, or its service agent, or a person with similar qualification to avoid danger.
12. The charger provided by us is specific, and no other charger can be used.
13. Please do not use the charger provided by us to charge other products, because the charger is designed for specific use.
14. In order to reduce the risk of fire or electric shock, please do not use any solid-state device to control the fan.
15. Before inserting the power supply, make sure that the voltage and frequency of the power supply are the same as those shown on the charger label.
16. Do not put this fan near fire, because there is a battery in the fan, which may cause explosion.
17. The continuous charging time shall not exceed 24 hours, and the charger should be unplugged after charging.
18. Do not modify the fan battery.
19. Fan abnormal automatic protection. Over current protection parts are installed on the main circuit board of the fan. When the current of the motor is too large due to various accidents, the over protection program on the circuit board will start, and will cut off the power supply of the fan. The temperature of the motor will not continue to rise, and the fan will have the danger of gas deformation and combustion.

Safety Introductions

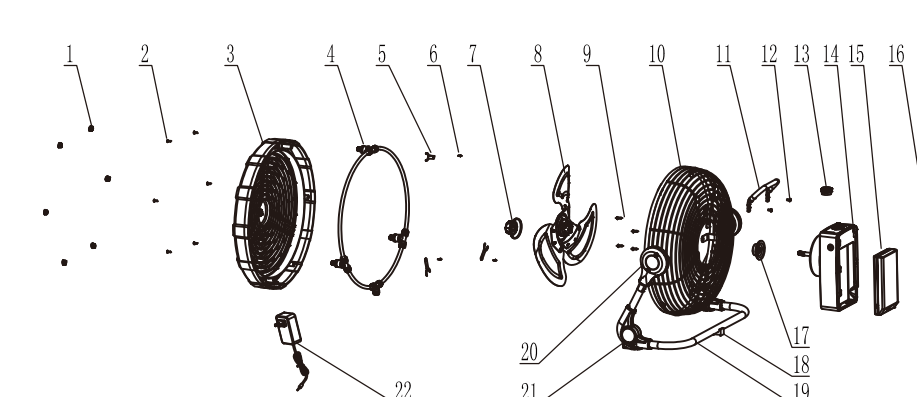
We actively encourage you to participate in the electronic recycling program, so please properly dispose of waste electronic products in accordance with local regulations, and do not treat the products as household garbage.

Additional Notes

- The charging can only be completed indoors. Please plug the water-proof silicone cover in the charging port when using outdoors.
- Before cleaning, please disconnect the power supply and do not disassemble or open the rotor guard to clean the rotor blades.
- Children aged 8 years and over, people with reduced physical, sensory or mental ability or lack of experience and knowledge, who have received supervision or guidance on the safe use of the device and understand the risks involved, can use the device. Children are not allowed to play with the appliance. Children are not allowed to clean, use and maintain without supervision. Children under 8 years old are not allowed to touch the appliance or its power cord.
- When the battery is not in use, please keep away from other metal objects, such as paper clips, coins, keys, nails, screws or other small metal objects. These metal objects can be connected from one terminal to the other, and shorting the battery terminals together may cause sparks, burns or fires.
- It is recommended that the fan and its battery are kept away from fire, even if it is not seriously damaged, because the battery may explode due to the fire.
- The user is not allowed to dismantle and replace the internal parts of the fan. In case of any fault, the user must contact the after-sales service department for maintenance.
- Don't forget to shut down and charge.
- During the operation of the product, when the electric quantity drops from the previous level to the next level, the upper level electric lamp may flicker and then go out, which is a normal phenomenon.
- The battery operated fan with a detachable battery pack shall be recharged only with the specified charger for the battery. A charger that may be suitable for one type of battery may create a risk of fire when used with another battery.
- Use battery operated fan only with specifically designated battery pack. Use of any other batteries may create a risk of fire.
- Do not increase this fan, even if it is severely damaged. The batteries can explode in a fire. Dispose of the fan in accordance with the following instructions: instructions for disposal of the product.

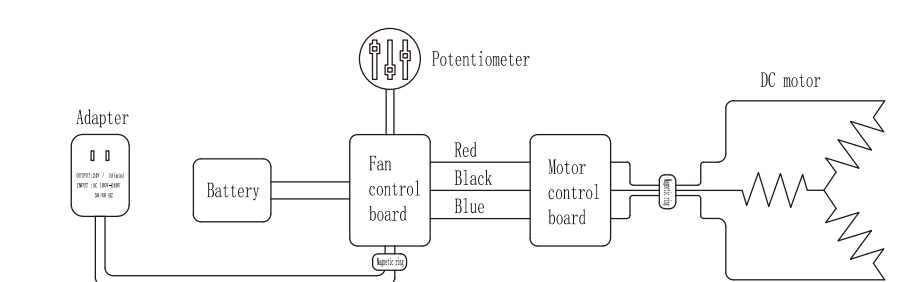
Safety Introductions

Product components



- | | | |
|--------------------------------|------------------------------------|-------------------------------|
| 1. Screw plug | 9. Screw | 16. Battery compartment cover |
| 2. Fixing screw | 10. Fan back net | 17. Waterproof bushing |
| 3. Fan front net | 11. Handle | 18. Rear rubber foot |
| 4. Spray assembly with nozzles | 12. Screw | 19. Base |
| 5. Spray fixing flat | 13. Switch knob | 20. Ornamental knob |
| 6. Screw | 14. Waterproof battery compartment | 21. Front glue foot |
| 7. Tighten nut | 15. Detachable battery pack | 22. Adapter |
| 8. Blade assembly | | |

Electrical principle diagram



How to use

- Before use, please check whether the voltage and frequency on the adapter nameplate conform to the local power supply (working voltage is 100V~240V / 50/60Hz).
- Select the wind speed by turning the switch according to the graphic indication of the control panel. This product is stepless speed regulation. After the fan is turned on, the indicator point of the knob rotates from "0" symbol to "+", and the wind speed increases gradually (it should be noted that the wind speed will be delayed for about 1 second after the knob is fixed).
- Before use, please push up the back cover of the waterproof battery compartment according to the prompts, remove the back cover and insert the detachable battery (when opening the box for the first time, the detachable battery is on the top of one side of the package accessories and packed in a separate paper box), and then install the back cover in the original way. At this time, turn on the fan. It can be seen that the five indicator lights on the control panel and the figure indicate the remaining power of the battery. Connect the power supply at the side of the waterproof box through the adapter matched with the product. When using the adapter to charge the product, please connect the product charging connector first, and then connect the external power supply. When charging, the power indicator corresponding to the remaining power will be in stroboscopic state. When the power is full, the power indicator on the top of the control box will be on. After about 50 minutes, the power indicator will be off when the power is full, the power indicator will be off).
- When the fan battery has more than 20% power, connect the mobile phone at the mark at the bottom of the waterproof box through the matching charging line of the mobile phone, and then charge the mobile phone. When charging, unplug the USB waterproof plug, and connect the mobile phone through the USB socket.
- The built-in battery of this product is detachable. According to the prompt steps, the removed battery pack can be used as a mobile power bank. There is a power display activation button on the side of the split battery. Press the activation button, and the remaining power will be displayed on the top warning lights of the battery, which are 20%~100% of the average power. After pressing the activation button, the power light will be off if there is no operation within 10 seconds. There is a DC charging plug at the bottom of the battery, which can be charged by connecting the power supply through the product matching adapter. When the battery is charged, the power indicator light corresponding to the remaining power will be blinking, and the power indicator light at the top of the battery pack will be fully on (not off); when the battery has more than 20% power, connect the mobile phone at the USB interface at the bottom of the battery through the mobile phone matching charging line to charge the phone.
- After the product is discharged, if you need to take off the battery pack for separate charging, please press the battery pack activation button to erase the battery capacity memory before charging the battery pack separately.

How to use

- The product is with misting spray function. Install the water hose from the product to the bottom of the front grill, install the three-way connector quickly, the other one is installed in the tap, open the faucet, the spray nozzle can spray with the water pressure of the tap water, and the spray volume is about 8.5L/hours.
- If the spray function is used and it is found that the spray is not fogging or is not smooth, the spray nozzles may be blocked, please use the tool to turn the clogged spray nozzles anticlockwise from the front of the fan, and replace the spare spray nozzles delivered with the machine.
- Within the set range, the fan can adjust the pitch angle arbitrarily by pushing the fan head.

How to use

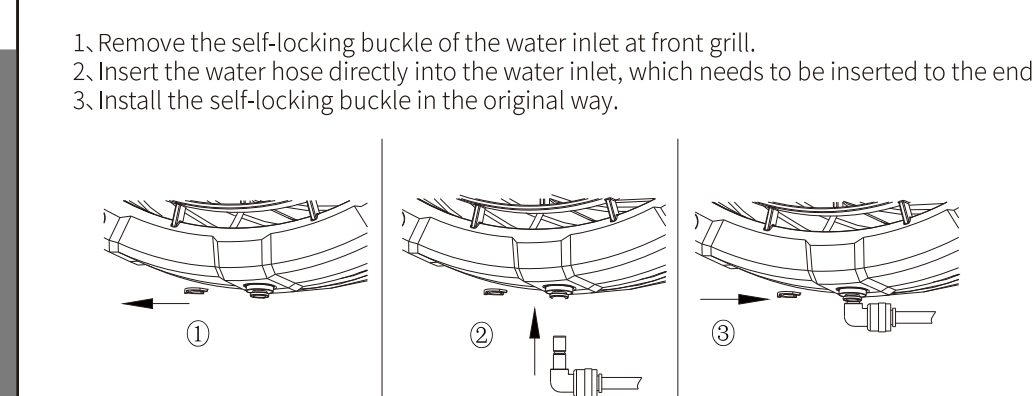
Detaching the battery



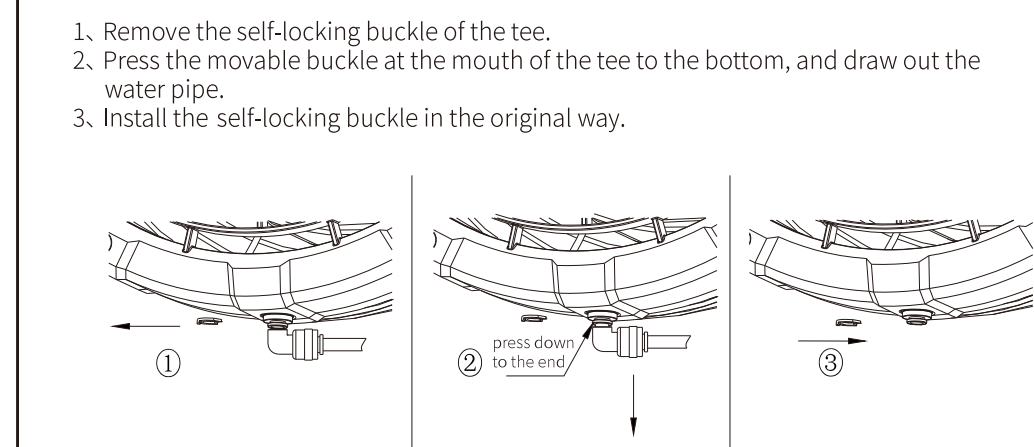
Installing the battery



Installation of water pipe



Removal of water pipe



Specification

Model name	CF100M
Power supply	26V/1.4A Constant current adapter power supply
Fan head size	12 inch
Run current (A)	<1.2
Rotation speed (RPM)	1700±150
Air flow (CFM)	1500
wind speed (m/s)	5.6
Full charge time (h)	2~3
Running time (h)	3~23
Net weight (KG)	3.2±20%
Battery capacity	2500mAh*6
Product dimensions	16.3"X11"X1.1 inch

Troubleshooting

Problem	Phenomenal description	Causes	Solution
* Open fan and not working	Power indicator is not on, and fan does not turn	The battery is dead	Use the adapter after charging
	The power indicator is on, and the fan does not turn on	Motor damage Motor terminal loose	Separate repairing (After-sale repairing)
	Fan only works with adapter	The battery is dead	(After-sale repairing)
* No charge / insufficient charge	Charging indicator is not on	Power socket failure and power failure	Replace the power socket / check whether the power line is normal
	Charging indicator is on after sufficient charge	Adapter damaged	Replace adapter
* Adapter overheated during charging	The adapter is overheated during charging	The battery is dead	(After-sale repairing)
	Battery power is less than 100%	Poor contact between adapter and socket	Replacement socket
	The operation time after full charge is obviously less than the normal time	Adapter damaged	Replace adapter
	Normal service life of battery is over 1 year	Charging time less than 2.5 hour	Recharge for more than 2.5 hours
	Fan endurance too short	The battery is dead	(After-sale repairing)
	After battery power consumption, the battery is not fully charged before storage and the storage time is more than 6 months	The battery is dead	(After-sale repairing)

Troubleshooting

Troubleshooting

Problem	Causes	Solution
* Abnormal blade rotation	When the fan blades rotate, they rotate fast or slow, or they do not rotate when they rotate	Insufficient electricity (led light light lit up) Recharge for more than 2.5 hours
* Automatic work	When the fan blades rotate, they rotate fast and slow or do not rotate (the power is more than 20% or sufficient)	PCBA is damaged (After-sale repairing)
* Abnormal power indicator	Normal operation of the switch does not control the function	PCBA is damaged (After-sale repairing)
	One or more power indicator lights flicker continuously, and the switch operation has no function	PCBA is damaged (After-sale repairing)
* USB does not charge the phone	Connecting USB cable to charge mobile phone has no response	Poor USB cable interface Replacement of USB line
	There is no problem with the above two kinds of fault causes, but it still cannot be charged	Less than 20% power Change to more than 20%
		PCBA is damaged (After-sale repairing)

Cleaning and storage

- Before cleaning the product, make sure that the power supply of the product has been cut off.
- Use a soft cloth moistened with detergent or alcohol to clean the oil and dust stains (never use gasoline or other corrosive liquid to plastic and paint).
- When the product is not used, it shall be placed in a dry and ventilated environment.
- When the product is not used for a long time, it should be charged within 3 months.

CLEANING AND STORAGE

LIMITED WARRANTY

HOME EASY LTD warrants to the original consumer or purchaser this GeekAire 12-inch outdoor rechargeable misting fan ("Product") is free from defects in material or workmanship for a period of one (1) year from the date of purchase. If any such defect is discovered within the warranty period, HOME EASY LTD, at its discretion, will repair or replace the Product at no cost. This limited warranty is good only to the original purchaser of the product and effective only when used in United States.
For warranty or repair service: Call 1-844-801-8880 and choose the appropriate prompt, or email info@homeeasy.net. Please have your Product's model number, your name, address, city, state, zip code and phone number ready.
NO OTHER WARRANTY IS APPLICABLE TO THIS PRODUCT. THIS WARRANTY IS IN LIEU OF ANY OTHER WARRANTY, EXPRESS OR IMPLIED, INCLUDING WITHOUT LIMITATION, ANY WARRANTY OF MERCHANTABILITY OR FITNESS FOR A PARTICULAR PURPOSE. TO THE EXTENT ANY IMPLIED WARRANTY IS REQUIRED BY LAW, IT IS LIMITED IN DURATION TO THE EXPRESS WARRANTY PERIOD ABOVE. NEITHER THE MANUFACTURER NOR ITS U.S. DISTRIBUTOR SHALL BE LIABLE FOR ANY INCIDENTAL, CONSEQUENTIAL, INDIRECT, SPECIAL, OR PUNITIVE DAMAGES OF ANY NATURE, INCLUDING WITHOUT LIMITATION, LOST REVENUES OR PROFITS, OR ANY OTHER DAMAGE WHETHER BASED IN CONTRACT, TORT, OR OTHERWISE, SOME STATES AND/OR TERRITORIES DO NOT ALLOW THE EXCLUSION OR LIMITATION OF INCIDENTAL OR CONSEQUENTIAL DAMAGES OR LIMITATIONS ON HOW LONG AN IMPLIED WARRANTY LASTS, SO THE ABOVE EXCLUSION OR LIMITATION MAY NOT APPLY TO YOU. THIS WARRANTY GIVES YOU, THE ORIGINAL PURCHASER, SPECIFIC LEGAL RIGHTS AND YOU MAY ALSO HAVE OTHER RIGHTS THAT VARY FROM STATE TO STATE OR TERRITORY TO TERRITORY.
THIS LIMITED WARRANTY DOES NOT APPLY TO
1. Failure of product to perform during power failures and interruptions or inadequate electrical service
2. Damage caused by transportation or handling
3. Damage caused to the product by accident, vermin, lightning, winds, fire, floods, or acts of God.
4. Damage resulting from accident, alteration, misuse, abuse, or improper installation, repair, or maintenance. Improper use includes using an external device that alters or converts the voltage or frequency of electricity
5. Any unauthorized product modification, repair by unauthorized repair center, or use of non-approved replacement parts.
6. Normal maintenance as described in the User's Guide, such as cleaning or replacing filters, cleaning coils, etc.
7. Use of accessories or components that are not compatible with this product.
The cost of repair or replacement under these excluded circumstances shall be borne by the consumer.

LIMITED WARRANTY

148mm
封底



Home Easy Ltd.
1275 Brookfield Ave.
Riverside, NJ 07074
Tel: 844-801-8880

210mm