

43mm

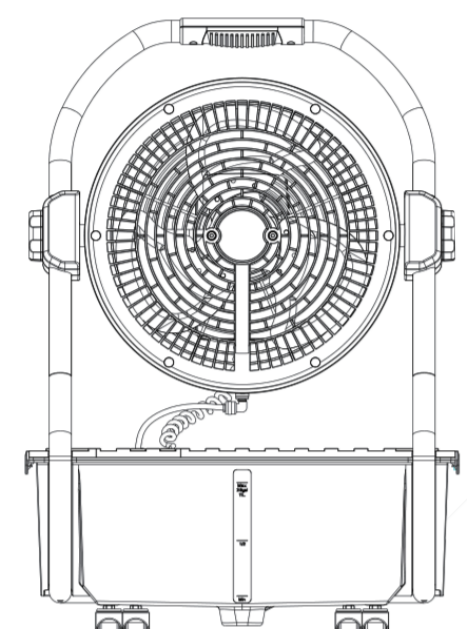
103mm

145mm



Outdoor Rechargeable Misting Fan

Owner's Manual Model: CF150M



IMPORTANT SAFETY INSTRUCTIONS READ AND SAVE THESE SAFETY INSTRUCTIONS BEFORE USING THIS FAN

Toll Free: 1-844-801-8880

Table of contents

Safety Introductions	2
Product Components	4
How To Use	5
Cleaning	10
Troubleshooting	11
Limited Warranty	13

Specification

Model	CF150M
Power Input	26.5V/1.2A Adapter
Size	12 inches
Air Volume	1500 (CFM)
Time Charging Time (h)	2-3 hrs
Working Time	1.5(with misting) / 3 - 23 hrs
Gross Weight	23.8 lbs
Net Weight	16.5 lbs
Battery Capacity	2500mAh*6 Cells
Product Dimensions	19.3 x 10.4 x 29.6 inches

Specification

IMPORTANT SAFETY INSTRUCTIONS READ AND SAVE THESE SAFETY INSTRUCTIONS BEFORE USING THIS FAN

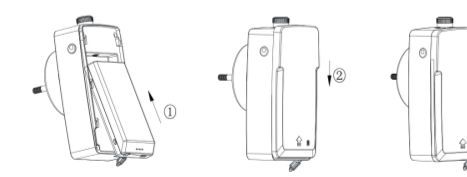
Steps of disassembling the battery pack:

1. Push-up the rear cover of the waterproof box and take down the rear cover.
2. Uncover the USB waterproof silicone cover at the bottom.
3. Hold two sides (bevel edge) of the battery bottom with hands and pull out the battery outwards.



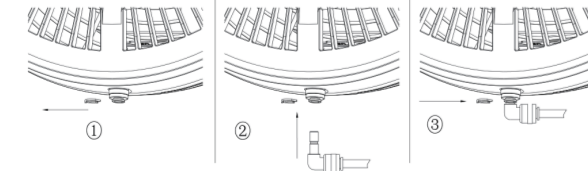
Steps of installing the battery pack:

1. Hold the battery with hands and push-up from the top of the battery into the battery slot.
2. Dislocate the rear cover slightly upward (approximately 5mm) and then push-down and fasten.
3. Fasten down the USB waterproof silicone cover at the bottom.



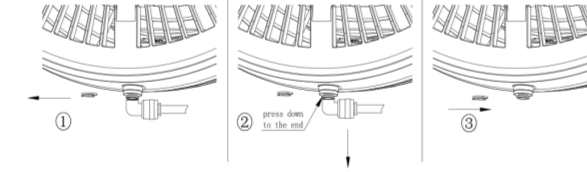
Steps of installing the water hose:

1. Take down the blue self-locking buckle of the Tee at first.
2. Directly insert the matched water hose into tee-junction until reaching the bottom.
3. Install back the tee-junction self-locking latch as original.



Steps of disassembling the water hose:

1. Take down the tee-junction self-locking latch at first.
2. Press the movable latch at the mouth of tee-junction to the bottom, pull out the water hose.
3. Install back the tee-junction self-locking latch as original.



Castors:

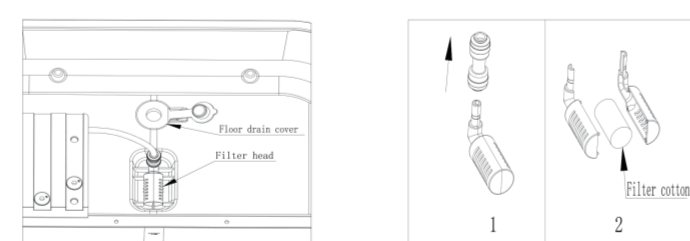
1. There are four universal casters at the bottom of the water tank, two casters at the back can be oriented and positioned. When you need to fix the casters, please press down the caster positioning buckle. Similarly, if you want to loosen the caster positioning, please pull up the positioning buckle.
2. Do not remove the caster to avoid damaging the water tank.

How To Use

CLEANING

Water tank/filter head cleaning and cautions

1. The spray nozzle hole of this product is smaller and can be blocked easily, please use tap water or clean and clear surface water like river water/lake water. After using the function of spraying, please drain away water in the water tank and clean the water tank prior to storing the product.
2. There is drain hole at the bottom of the water tank, please take this product to where it is possible to drain away water, place the product vertically on the horizontal floor, open the drain hole at the bottom of the water tank to drain away water. In view that where the product is placed is not horizontal and water channel formed by reinforcing rib inside the water tank, please tilt the product after drainage to drain away water thoroughly.
3. In order to avoid blocking the spray nozzle hole, water inlet end of the water pump, please tilt the product with filter head and inside with filter sponge, please dismount the filter head or clean the sponge regularly based on the actual situation.

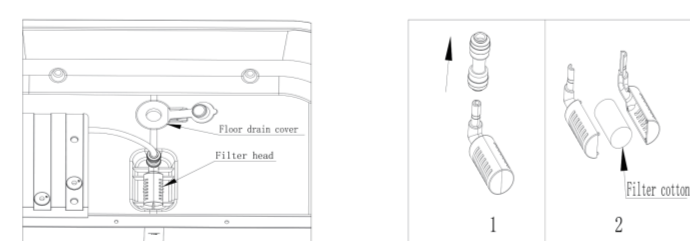


How To Use

CLEANING

Water tank/filter head cleaning and cautions

1. The spray nozzle hole of this product is smaller and can be blocked easily, please use tap water or clean and clear surface water like river water/lake water. After using the function of spraying, please drain away water in the water tank and clean the water tank prior to storing the product.
2. There is drain hole at the bottom of the water tank, please take this product to where it is possible to drain away water, place the product vertically on the horizontal floor, open the drain hole at the bottom of the water tank to drain away water. In view that where the product is placed is not horizontal and water channel formed by reinforcing rib inside the water tank, please tilt the product after drainage to drain away water thoroughly.
3. In order to avoid blocking the spray nozzle hole, water inlet end of the water pump, please tilt the product with filter head and inside with filter sponge, please dismount the filter head or clean the sponge regularly based on the actual situation.



How To Use

TROUBLESHOOTING

Problem	Possible Cause	Solution
Turn on the fan but the fan is not working	Power indicator light is off, the fan doesn't work Motor damage Motor terminal is loose The fan only work with the adapter	Use after charging with the adapter. (After-sales maintenance) Replace the adapter. (After-sales maintenance)
Spark at the charging port	Sparks appear when the adapter (charging head) is inserted into charging port of the fan	Insert the adapter charging head into the charging port of the fan, then connect the adapter with the power to charge. (After-sales maintenance)
Failure to charge failure to charge fully	Changing indicator light is off Adapter damage Battery damage	Replace the adapter Replace the adapter (After-sales maintenance)
The adapter is overheating when charging	The adapter is overheating when charging, human body cannot contact/is afraid to touch Adapter damage	Replace the outlet Replace the adapter (After-sales maintenance)
Fan's battery life is too short	Battery power is less than 100% Running time is obviously less than nominal time after being fully charged Normal use of battery requires service life longer than 1 year	Recharge for more than 2 hours Batteries are naturally less than nominal time after being fully charged (After-sales maintenance)
Abnormal fan blade rotation	The fan blades rotate too fast or slowly, or stop intermittently The fan blades rotate too fast or slowly, or stop intermittently (battery power greater than 20% or sufficient)	Low battery (red light is on) Recharge for more than 2 hours Replace the outlet (After-sales maintenance)
Automatic working	Normal operation of switch can't control the function	Circuit board damage (After-sales maintenance)

Troubleshooting

TROUBLESHOOTING

Problem	Possible Cause	Solution
Abnormal display of power indicator light	One or multiple power indicator light flickers continuously, switch operation doesn't function	Circuit board damage (After-sales maintenance)
Failure to charge the mobile by USB	No response by connecting USB to charge the mobile Above two fault causes don't lead to the problem, but still failure to charge	Poor contact of USB cable interface Battery power less than 20% Charge to make battery power greater than 20% (After-sales maintenance)

Troubleshooting

LIMITED WARRANTY

HOME EASY LTD warrants to the original consumer or purchaser this Geek Aire 12-inch outdoor rechargeable misting fan ("Product") is free from defects in material or workmanship for a period of one (1) year from the date of purchase. If any such defect is discovered within the warranty period, HOME EASY LTD, at its discretion, will repair or replace the Product at no cost. This limited warranty is good only to the original purchaser of the product and effective only when used in the United States.

For warranty or repair services: Call 1-844-801-8880 and choose the appropriate prompt, or email info@homeeasy.net. Please have your Product's model number, your name, address, city, state, zip code and phone number ready.

NO OTHER WARRANTY IS APPLICABLE TO THIS PRODUCT. THIS WARRANTY IS IN LIEU OF ANY OTHER WARRANTY, EXPERS OR IMPLIED, INCLUDING WITHOUT LIMITATION, ANY WARRANTY OF MERCHANTABILITY OR FITNESS FOR A PARTICULAR PURPOSE. TO THE EXTENT ANY IMPLIED WARRANTY IS REQUIRED BY LAW, IT IS LIMITED IN DURATION TO THE EXPRESS WARRANTY PERIOD ABOVE. NEITHER THE MANUFACTURER NOR ITS U.S. DISTRIBUTOR SHALL BE LIABLE FOR ANY INCIDENTAL, CONSEQUENTIAL, INDIRECT, SPECIAL, OR PUNITIVE DAMAGES OF ANY NATURE, INCLUDING WITHOUT LIMITATION, LOST REVENUES OR PROFITS, OR ANY OTHER DAMAGE WHETHER BASED IN CONTRACT, TORT, OR OTHERWISE. SOME STATES AND/OR TERRITORIES DO NOT ALLOW THE EXCLUSION OR LIMITATION OF INCIDENTAL OR CONSEQUENTIAL DAMAGES OR LIMITATIONS ON HOW LONG AN IMPLIED WARRANTY LASTS. SO THE ABOVE EXCLUSION OR LIMITATION MAY NOT APPLY TO YOU. THIS WARRANTY GIVES YOU, THE ORIGINAL PURCHASER, SPECIFIC LEGAL RIGHTS AND YOU MAY ALSO HAVE OTHER RIGHTS THAT VARY FROM STATE TO STATE OR TERRITORY TO TERRITORY.

THIS LIMITED WARRANTY DOES NOT APPLY TO

1. Failure of product to perform during power failures and interruptions or inadequate electrical service
2. Damage caused by transportation or handling.
3. Damage caused to the product by accident, vermin, lightning, winds, fire, floods, or acts of God.
4. Damage resulting from accident, alteration, misuse, abuse, or improper installation, repair, or maintenance. Improper use includes using an external device that alters or converts the voltage or frequency of electricity
5. Any unauthorized product modification, repair by unauthorized repair center, or use of non-approved replacement parts.
6. Normal maintenance as described in the User's Guide, such as cleaning or replacing filters, cleaning coils, etc.
7. Use of accessories or components that are not compatible with this product.

The cost of repair or replacement under these excluded circumstances shall be borne by the consumer.

LIMITED WARRANTY

HOME EASY LTD warrants to the original consumer or purchaser this Geek Aire 12-inch outdoor rechargeable misting fan ("Product") is free from defects in material or workmanship for a period of one (1) year from the date of purchase. If any such defect is discovered within the warranty period, HOME EASY LTD, at its discretion, will repair or replace the Product at no cost. This limited warranty is good only to the original purchaser of the product and effective only when used in the United States.

For warranty or repair services: Call 1-844-801-8880 and choose the appropriate prompt, or email info@homeeasy.net. Please have your Product's model number, your name, address, city, state, zip code and phone number ready.

NO OTHER WARRANTY IS APPLICABLE TO THIS PRODUCT. THIS WARRANTY IS IN LIEU OF ANY OTHER WARRANTY, EXPERS OR IMPLIED, INCLUDING WITHOUT LIMITATION, ANY WARRANTY OF MERCHANTABILITY OR FITNESS FOR A PARTICULAR PURPOSE. TO THE EXTENT ANY IMPLIED WARRANTY IS REQUIRED BY LAW, IT IS LIMITED IN DURATION TO THE EXPRESS WARRANTY PERIOD ABOVE. NEITHER THE MANUFACTURER NOR ITS U.S. DISTRIBUTOR SHALL BE LIABLE FOR ANY INCIDENTAL, CONSEQUENTIAL, INDIRECT, SPECIAL, OR PUNITIVE DAMAGES OF ANY NATURE, INCLUDING WITHOUT LIMITATION, LOST REVENUES OR PROFITS, OR ANY OTHER DAMAGE WHETHER BASED IN CONTRACT, TORT, OR OTHERWISE. SOME STATES AND/OR TERRITORIES DO NOT ALLOW THE EXCLUSION OR LIMITATION OF INCIDENTAL OR CONSEQUENTIAL DAMAGES OR LIMITATIONS ON HOW LONG AN IMPLIED WARRANTY LASTS. SO THE ABOVE EXCLUSION OR LIMITATION MAY NOT APPLY TO YOU. THIS WARRANTY GIVES YOU, THE ORIGINAL PURCHASER, SPECIFIC LEGAL RIGHTS AND YOU MAY ALSO HAVE OTHER RIGHTS THAT VARY FROM STATE TO STATE OR TERRITORY TO TERRITORY.

THIS LIMITED WARRANTY DOES NOT APPLY TO

1. Failure of product to perform during power failures and interruptions or inadequate electrical service
2. Damage caused by transportation or handling.
3. Damage caused to the product by accident, vermin, lightning, winds, fire, floods, or acts of God.
4. Damage resulting from accident, alteration, misuse, abuse, or improper installation, repair, or maintenance. Improper use includes using an external device that alters or converts the voltage or frequency of electricity
5. Any unauthorized product modification, repair by unauthorized repair center, or use of non-approved replacement parts.
6. Normal maintenance as described in the User's Guide, such as cleaning or replacing filters, cleaning coils, etc.
7. Use of accessories or components that are not compatible with this product.

The cost of repair or replacement under these excluded circumstances shall be borne by the consumer.

封底



Kool Solutions For Life

Home Easy Ltd
1275 Bloomfield Ave
Fairfield, NJ 07004
Toll Free
1-844-801-8880

210mm

IMPORTANT SAFETY INTRODUCTIONS

When using electrical appliances, basic precautions should always be followed to reduce the risk of fire, electric shock, and injury to persons, including the following:

1. Please keep the fan out of reach of children, and the fan is not intended for children.
2. Please turn off the fan before moving the fan or leaving.
3. Please place the fan on horizontal, steady and stable surface in order to prevent overturning.
4. When the fan is running, please don't put finger, pencil or any other object into the fan guard.
5. The power plug should be pulled out before cleaning the fan.
6. It is forbidden to dismount, modify or use the fan for any other purpose.
7. Don't expose the battery to liquid or to strong mechanical impact.
8. It is forbidden to plug the charger into the outlet/pull the charger out of the outlet with wet hands.
9. Before the fan guard is installed in place, please don't operate the fan; otherwise, it may cause serious personal injury.
10. If the charger or power line is damaged, it must be replaced by the manufacturer or its service agent or personnel with similar qualification so as to avoid danger.
11. The charger we provide is dedicated, please don't use other charger.
12. Don't use the charger we provide to charge other products, because this charger is dedicated.
13. In order to reduce the risk of fire or electric shock, please don't use any solid-state speed regulating device to control the fan.
14. Before plugging in the outlet, make sure the rated voltage and frequency of the power supply is consistent with as shown on the charger label.
15. It is forbidden to place the fan in fire, because there is battery inside the fan, otherwise, it may explode.
16. Please don't charge for more than 24 hours continuously, and pull out the charger plug after being fully charged.
17. Please don't disassemble or modify the fan battery.
18. When cleaning the fan, please discharge the fan unit the product is out of operation and out of charging state, use wet soft cloth with detergent or alcohol to clean the greasy dirt and dust (don't use gasoline or other liquid which is corrosive to plastic and oil paint), then wipe with dry cloth. Be careful not to collide with the fan blades and change the angle of the blades.
19. Automatic protection for fan exception. Overcurrent protection part is installed on main circuit board of the fan, in case the motor overcurrent is due to accident, overcurrent protection program on the main circuit board will start to cut off the fan power, the motor temperature will not continue to rise, and the fan will not be exposed to the hazard of part deformation and burning.

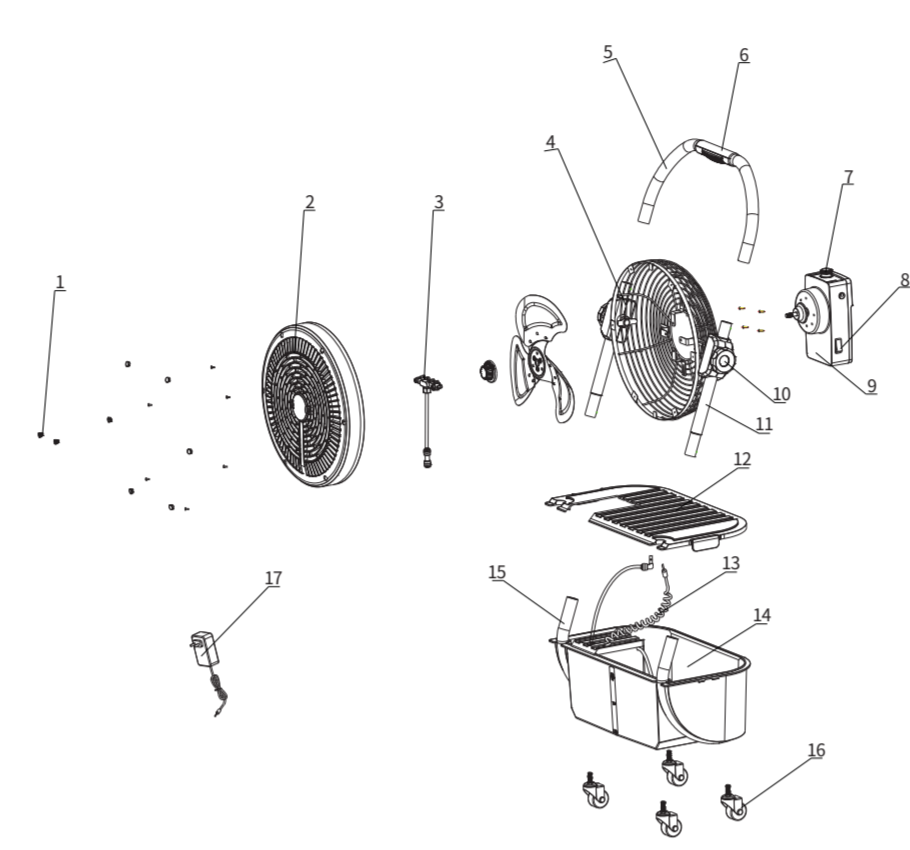
Safety Introductions

We actively encourage you to participate in the electronic products recycling project. Please properly handle discarded electronic products in accordance with local regulations, and don't treat this product as household waste.

1. Charging shall be completed indoor, please plug in the waterproof silicone cover at the charging port when using outdoor.
2. Please cut off power prior to cleaning, it is forbidden to detach/open rotor protective cover to clean the motor blade.
3. If children above 8 years of age, person with diminished physical, sensory or mental competence or lack of experience and knowledge have received supervision or guidance on using this appliance safely, and understand the danger involved, they may use this appliance. The children should not use the appliance. Without supervision, the children should not clean, use and maintain the appliance. Children under 8 years of age should not contact the appliance and its power line.
4. When detachable battery is not used, please keep it away from other metal object, such as clip, coin, key, nail, bolt or other little metal object. These metal objects can be connected from one terminal to another, short circuit of battery terminals can lead to spark, burn or fire.
5. It is forbidden to incinerate the fan and its battery even if it is severely damaged, because the battery may explode in fire.
6. User should not disassemble and replace internal components of the fan randomly, in case of failure, please contact with after-sales service department for maintenance.
7. If electric quantity declines from upper tier to lower tier when using this product, upper tier electric quantity indicator light may flicker and then go out, which is normal.
8. Any technological improvement to this product is subject to change without prior notice.
9. In case of any change in product appearance and color, the real object shall prevail.
10. Please don't forget to turn off the fan, charge and store.

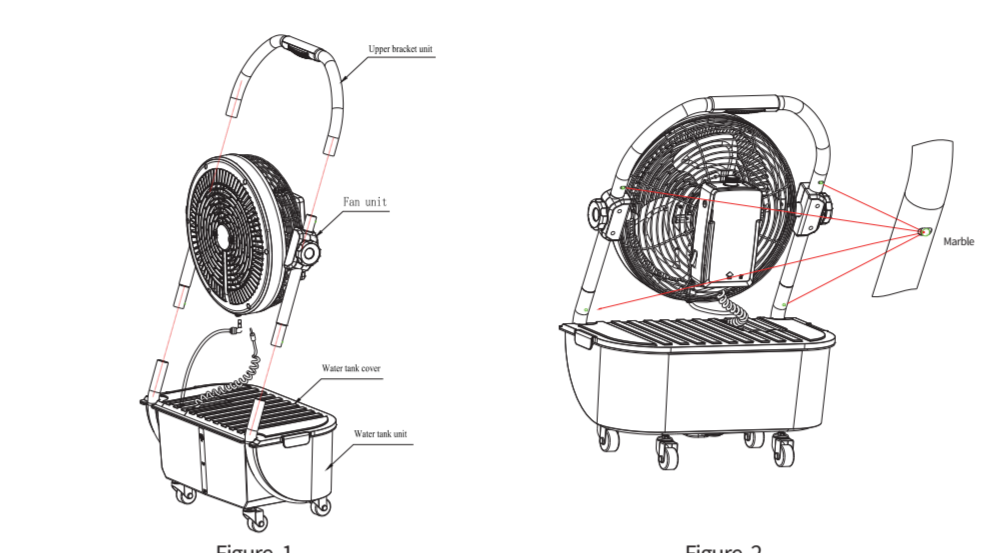
Safety Introductions

PRODUCT COMPONENTS



1. Mist Nozzles
2. Front Grill
3. Spray Module
4. Rear Cover
5. Upper Bracket
6. Handle
7. Switching Knob
8. Pump Switch
9. Waterproof Box
10. Locking Knob
11. Main Support
12. Water Tank Cover
13. Pump Power Line
14. Water Tank
15. Subframe
16. Swivel Caster Wheels
17. Adapter

INSTALLATION



1. **Unboxing** Open the packing box, take out the upper bracket unit, Fan Unit, Water Tank Cover, Water Tank, Battery Pack and Adapter.
2. **Step 1** Connect the fan unit and the water tank unit. Install the Main Support from the fan unit into the Subframe. Please pay attention to that the front direction of the fan is consistent with the front direction of the water tank. Press the marbles on Main Support installation position and then align and plug them into the Subframe. The marbles will bounce off and fit into place.

How To Use

OPERATION

1. Please check if voltage and frequency on the nameplate complies with local power supply (working voltage is 100V-240V/50/60Hz) prior to use.
2. Press Switch Knob on the control panel to select wind speed. This product adopts stepless speed regulation. After starting the fan, rotate indicator panel of the rotary switch from the symbol "0" to "+" to gradually increase the wind speed (please be noted that after rotary switch is at fixed point, wind speed shows 1 second delay in acceleration).
3. Please push-up the rear cover of the waterproof box as per the instructions prior to use, take out the rear cover, then plug in detachable battery (when unpacking for the first time, the detachable battery is on the top of one side of packing accessory and packed by individual paper carton), install back the rear cover as original, then open the fan, it can be seen that 5 indicator lights on the control panel and text image hint of residual current. It is possible to charge by connecting the adapter matched with this product at the side of the waterproof box. When charging the product with the adapter, please connect the charging head of the product at first, and then connect the external power supply. The power indicator light corresponding with the residual current will be in the state of flickering when charging. All power indicator lights on top of the control box are all on after being fully charged, and go out about 50 minutes later (going out after being fully charged). When charging, please pull out the waterproof plug at the charging port.

DISASSEMBLY INSTRUCTIONS

1. Before disassembling the product, please take out the Battery Pack and make sure that the fan is OFF.
 2. Pull out the water pipe at the bottom of the fan and pull out the power line of the water pump.
 3. Press down the marbles and pull out the upper bracket Figure 2.
 4. Press down the marble and pull out the fan unit away from the water tank Figure 2.
- OPERATION**
1. Please check if voltage and frequency on the nameplate complies with local power supply (working voltage is 100V-240V/50/60Hz) prior to use.
 2. Press Switch Knob on the control panel to select wind speed. This product adopts stepless speed regulation. After starting the fan, rotate indicator panel of the rotary switch from the symbol "0" to "+" to gradually increase the wind speed (please be noted that after rotary switch is at fixed point, wind speed shows 1 second delay in acceleration).
 3. Please push-up the rear cover of the waterproof box as per the instructions prior to use, take out the rear cover, then plug in detachable battery (when unpacking for the first time, the detachable battery is on the top of one side of packing accessory and packed by individual paper carton), install back the rear cover as original, then open the fan, it can be seen that 5 indicator lights on the control panel and text image hint of residual current. It is possible to charge by connecting the adapter matched with this product at the side of the waterproof box. When charging the product with the adapter, please connect the charging head of the product at first, and then connect the external power supply. The power indicator light corresponding with the residual current will be in the state of flickering when charging. All power indicator lights on top of the control box are all on after being fully charged, and go out about 50 minutes later (going out after being fully charged). When charging, please pull out the waterproof plug at the charging port.
 4. If the power of fan battery is greater than 20%, it is possible to charge the mobile by connecting the USB cable matched with the mobile with the mobile at the bottom mark of the waterproof box, USB waterproof plug shall be pulled out when charging, connection with the mobile can be realized by the USB port.
 5. The built-in battery provided for this product is detachable/replaceable, detached battery pack can serve as mobile power as prompt steps. There is power display enable button at the side of detachable battery, in case of pressing this enable button, 5 indicator lights at the upper part of the battery will display the residual current, which will be evenly distributed 20%-100% of electricity; in case of pressing this enable button for 10 seconds without operation, the power indicator lights go out. UCC1 Direct current charging plug is provided at the bottom of the battery, it is possible to charge by connecting the adapter matched with the product with the power supply, power indicator light corresponding to the residual current will be in the state of flickering when charging. After being fully charged, all power indicator lights on top of the battery pack will be on; if the battery power is still greater than 20%, it is possible to charge the mobile by connecting the USB cable matched with the mobile at the USB port at the bottom of the battery.
 6. After the product is discharged and it is necessary to take down the battery pack to charge separately, please take down the battery pack by step, gently press the enable button on the battery pack to eliminate the power capacity memory and then charge the battery pack separately.
 7. This product is provided with the spraying system; after completion, 2.0 gallon into the water tank not higher than the maximum water level (approximately 2.0 gallon, refer to the mark of water gauge of the water tank), open the pump switch at the right side of the waterproof box, the spraying system can realize the function of spraying through the water pump, and volume of spray is about 1.3 gallon/h; the spray unit can spray mist by turning on the tap of tap water with another end of the complementary water supply hose to quick to be junction at the bottom of front net of this product, and volume of spray is about 1.3 gallon/h.
 8. If the spray nozzle fails to spray mist or fails to spray mist smoothly, the nozzle may be blocked, please use the tool clamp to unscrew the blocked nozzle in front of the fan anticlockwise, and replace with the complementary spare nozzle.
 9. Within the setting range, the fan may push the fan guard to adjust the pitch angle randomly.

DISASSEMBLY INSTRUCTIONS

1. Before disassembling the product, please take out the Battery Pack and make sure that the fan is OFF.
2. Pull out the water pipe at the bottom of the fan and pull out the power line of the water pump.
3. Press down the marbles and pull out the upper bracket Figure 2.
4. Press down the marble and pull out the fan unit away from the water tank Figure 2.

OPERATION

1. Please check if voltage and frequency on the nameplate complies with local power supply (working voltage is 100V-240V/50/60Hz) prior to use.
2. Press Switch Knob on the control panel to select wind speed. This product adopts stepless speed regulation. After starting the fan, rotate indicator panel of the rotary switch from the symbol "0" to "+" to gradually increase the wind speed (please be noted that after rotary switch is at fixed point, wind speed shows 1 second delay in acceleration).
3. Please push-up the rear cover of the waterproof box as per the instructions prior to use, take out the rear cover, then plug in detachable battery (when unpacking for the first time, the detachable battery is on the top of one side of packing accessory and packed by individual paper carton), install back the rear cover as original, then open the fan, it can be seen that 5 indicator lights on the control panel and text image hint of residual current. It is possible to charge by connecting the adapter matched with this product at the side of the waterproof box. When charging the product with the adapter, please connect the charging head of the product at first, and then connect the external power supply. The power indicator light corresponding with the residual current will be in the state of flickering when charging. All power indicator lights on top of the control box are all on after being fully charged, and go out about 50 minutes later (going out after being fully charged). When charging, please pull out the waterproof plug at the charging port.
4. If the power of fan battery is greater than 20%, it is possible to charge the mobile by connecting the USB cable matched with the mobile with the mobile at the bottom mark of the waterproof box, USB waterproof plug shall be pulled out when charging, connection with the mobile can be realized by the USB port.
5. The built-in battery provided for this product is detachable/replaceable, detached battery pack can serve as mobile power as prompt steps. There is power display enable button at the side of detachable battery, in case of pressing this enable button, 5 indicator lights at the upper part of the battery will display the residual current, which will be evenly distributed 20%-100% of electricity; in case of pressing this enable button for 10 seconds without operation, the power indicator lights go out. UCC1 Direct current charging plug is provided at the bottom of the battery, it is possible to charge by connecting the adapter matched with the product with the power supply, power indicator light corresponding to the residual current will be in the state of flickering when charging. After being fully charged, all power indicator lights on top of the battery pack will be on; if the battery power is still greater than 20%, it is possible to charge the mobile by connecting the USB cable matched with the mobile at the USB port at the bottom of the battery.
6. After the product is discharged and it is necessary to take down the battery pack to charge separately, please take down the battery pack by step, gently press the enable button on the battery pack to eliminate the power capacity memory and then charge the battery pack separately.
7. This product is provided with the spraying system; after completion, 2.0 gallon into the water tank not higher than the maximum water level (approximately 2.0 gallon, refer to the mark of water gauge of the water tank), open the pump switch at the right side of the waterproof box, the spraying system can realize the function of spraying through the water pump, and volume of spray is about 1.3 gallon/h; the spray unit can spray mist by turning on the tap of tap water with another end of the complementary water supply hose to quick to be junction at the bottom of front net of this product, and volume of spray is about 1.3 gallon/h.
8. If the spray nozzle fails to spray mist or fails to spray mist smoothly, the nozzle may be blocked, please use the tool clamp to unscrew the blocked nozzle in front of the fan anticlockwise, and replace with the complementary spare nozzle.
9. Within the setting range, the fan may push the fan guard to adjust the pitch angle randomly.

DISASSEMBLY INSTRUCTIONS

1. Before disassembling the product, please take out the Battery Pack and make sure that the fan is OFF.
2. Pull out the water pipe at the bottom of the fan and pull out the power line of the water pump.
3. Press down the marbles and pull out the upper bracket Figure 2.
4. Press down the marble and pull out the fan unit away from the water tank Figure 2.

OPERATION

1. Please check if voltage and frequency on the nameplate complies with local power supply (working voltage is 100V-240V/50/60Hz) prior to use.
2. Press Switch Knob on the control panel to select wind speed. This product adopts stepless speed regulation. After starting the fan, rotate indicator panel of the rotary switch from the symbol "0" to "+" to gradually increase the wind speed (please be noted that after rotary switch is at fixed point, wind speed shows 1 second delay in acceleration).
3. Please push-up the rear cover of the waterproof box as per the instructions prior to use, take out the rear cover, then plug in detachable battery (when unpacking for the first time, the detachable battery is on the top of one side of packing accessory and packed by individual paper carton), install back the rear cover as original, then open the fan, it can be seen that 5 indicator lights on the control panel and text image hint of residual current. It is possible to charge by connecting the adapter matched with this product at the side of the waterproof box. When charging the product with the adapter, please connect the charging head of the product at first, and then connect the external power supply. The power indicator light corresponding with the residual current will be in the state of flickering when charging. All power indicator lights on top of the control box are all on after being fully charged, and go out about 50 minutes later (going out after being fully charged). When charging, please pull out the waterproof plug at the charging port.
4. If the power of fan battery is greater than 20%, it is possible to charge the mobile by connecting the USB cable matched with the mobile with the mobile at the bottom mark of the waterproof box, USB waterproof plug shall be pulled out when charging, connection with the mobile can be realized by the USB port.
5. The built-in battery provided for this product is detachable/replaceable, detached battery pack can serve as mobile power as prompt steps. There is power display enable button at the side of detachable battery, in case of pressing this enable button, 5 indicator lights at the upper part of the battery will display the residual current, which will be evenly distributed 20%-100% of electricity; in case of pressing this enable button for 10 seconds without operation, the power indicator lights go out. UCC1 Direct current charging plug is provided at the bottom of the battery, it is possible to charge by connecting the adapter matched with the product with the power supply, power indicator light corresponding to the residual current will be in the state of flickering when charging. After being fully charged, all power indicator lights on top of the battery pack will be on; if the battery power is still greater than 20%, it is possible to charge the mobile by connecting the USB cable matched with the mobile at the USB port at the bottom of the battery.
6. After the product is discharged and it is necessary to take down the battery pack to charge separately, please take down the battery pack by step, gently press the enable button on the battery pack to eliminate the power capacity memory and then charge the battery pack separately.
7. This product is provided with the spraying system; after completion, 2.0 gallon into the water tank not higher than the maximum water level (approximately 2.0 gallon, refer to the mark of water gauge of the water tank), open the pump switch at the right side of the waterproof box, the spraying system can realize the function of spraying through the water pump, and volume of spray is about 1.3 gallon/h; the spray unit can spray mist by turning on the tap of tap water with another end of the complementary water supply hose to quick to be junction at the bottom of front net of this product, and volume of spray is about 1.3 gallon/h.
8. If the spray nozzle fails to spray mist or fails to spray mist smoothly, the nozzle may be blocked, please use the tool clamp to unscrew the blocked nozzle in front of the fan anticlockwise, and replace with the complementary spare nozzle.
9. Within the setting range, the fan may push the fan guard to adjust the pitch angle randomly.