



Model#: SC-609

# 360° HDTV Digital Amplified Motorized Rotating Antenna

## USER GUIDE

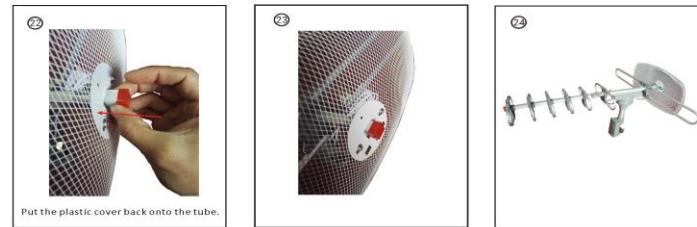
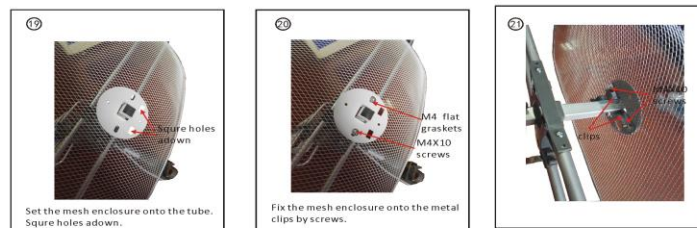
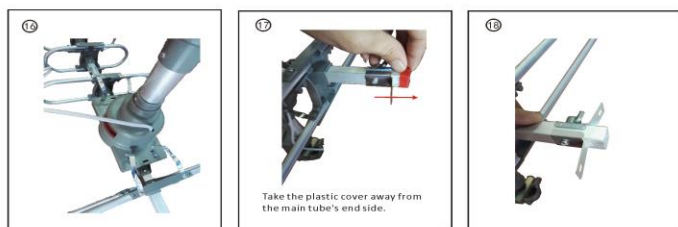
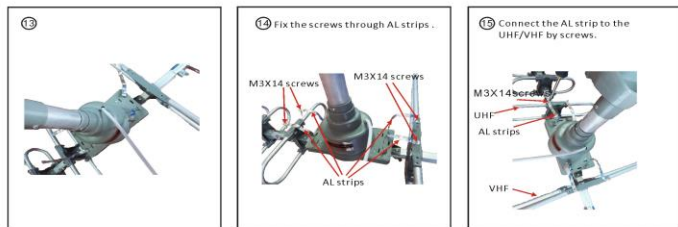
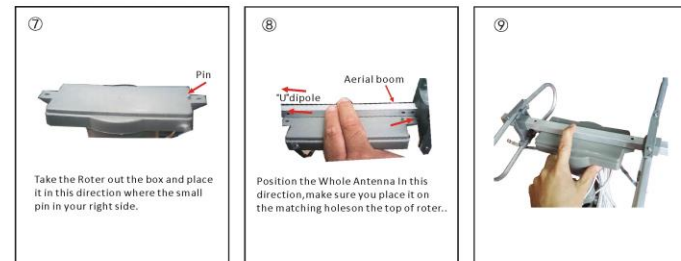
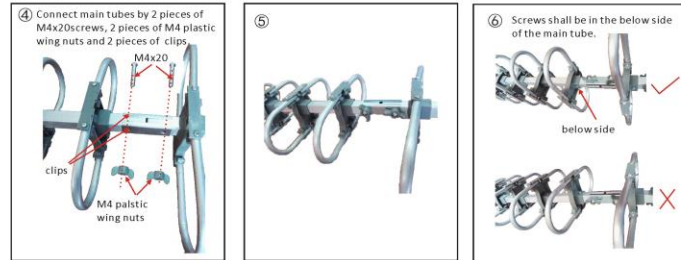
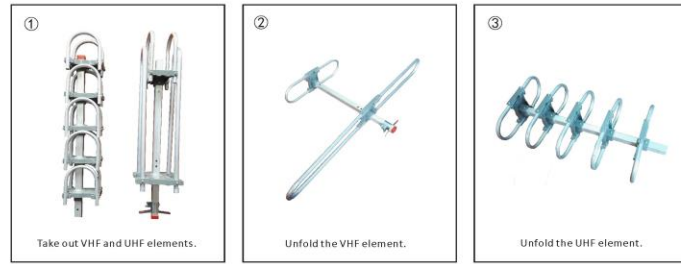
### Specifications

- + Operation Frequency: 47 - 862MHz
- + Gain: 20 - 30dB
- + Standing Wave Ratio: < 1.5
- + Noise Parameter: < 2dB
- + Impedence: 75 Ω
- + Operation Voltage: AC110V ± 10% 60Hz
- + Power: < 3W
- + Rotating Speed: 4r / minute
- + Circumrotate Angle: 360°

### Set-Up Guide

1. Make sure the antenna has been assembled according to the Figures to the right. Receiver connects to antenna.
2. After connecting the antenna to power, please press the revolving button on the remote control. The antenna will begin revolving. Please continue revolving the antenna until the TV program reaches the best signal quality.
3. Turn off the power after you've found the best antenna position.

Copyright ©2015 Supersonic Inc. All rights reserved.  
 Features and specifications are subject to change without prior notification.  
 Prop 65 Warning: This product may contain chemicals known to the State of California to cause cancer and birth defects or other reproductive harm.



### Mount Antenna Outdoor on High Ground

After you have assembled the antenna, place the antenna on a pole or stand as high as possible with enough clearance so the antenna can rotate safely. Run the antenna cable to your home/office, then install it to the device antenna control box.

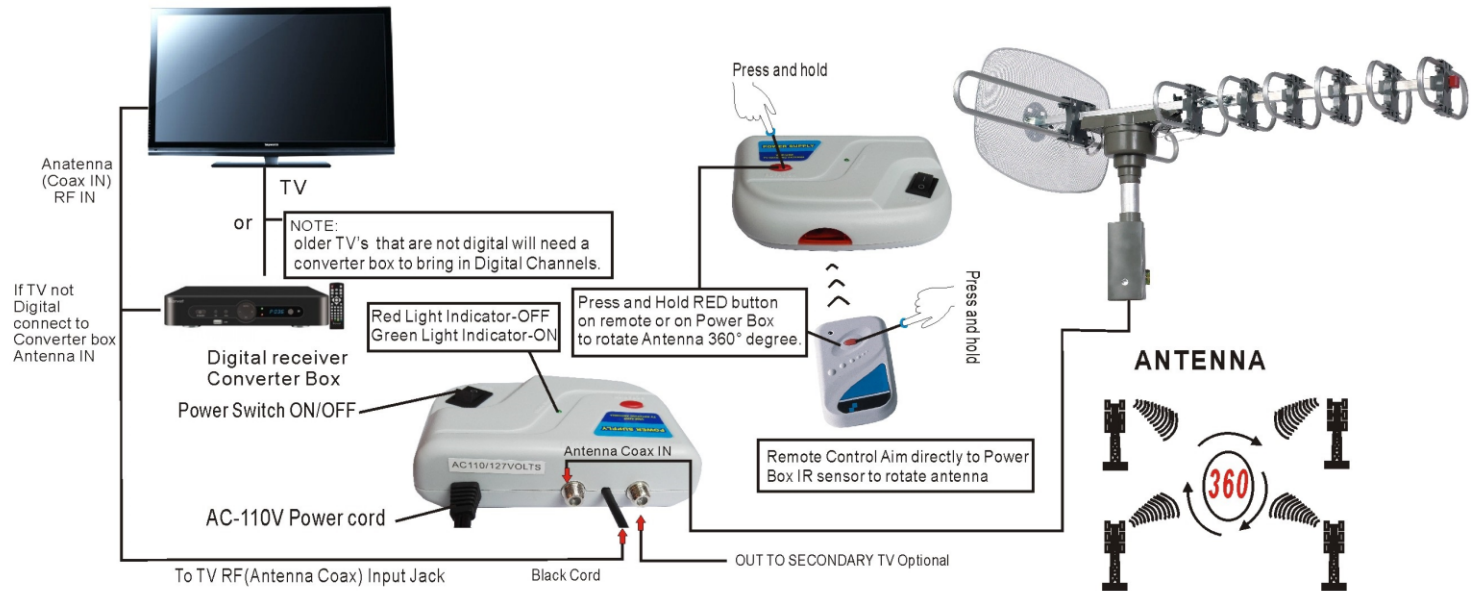
### Last Installation Step

Make sure to connect it exactly as the figures show. On your main TV, scan for channels. Make sure the signal type is AIR/CABLE depending on your connection type.







# INSTRUCTION MANUAL

## ILLUSTRATION OF THE COMPONENTS

# SC-609



**Package Contains:**

NO.	ITEM	QTY	IMAGE
1	Main Unit (Include 50ft 75Ω coax cable)	1	
2	Power Supply	1	
3	Remote Control (Batteries not included)	1	
4	User Manual	1	
5	Plastic Safety Tie	25	
6	Cable Staples	15	

## Installation Guide

- ▶ First, make sure the antenna has been installed on Flat Roof top. You will need to have your own antenna pole to connect our antenna.
- ▶ Run the white coax antenna wire directly to power box just like illustration shown in pg 1.
- ▶ Move the switch to ON to power ON the antenna power box. You will see a solid green led light.
- ▶ Go to TV control or converter box control to setup your TV channels. You will need to scan for channel under "AIR"/"Antenna" make sure you press and hold the revolving(RED) button on the power box or on the antenna remote, and do not loose the button until your TV programs scan is complete, then release button.  
This will make antenna rotate 360° while you TV scans and brings in all channels from all directions.
- ▶ After TV is programed and you are done watching TV for the rest of the day, it's recommended to power OFF your antenna power box to conserve energy. Do not leave power box ON all night overnight.

## Installation Tips

1. Mount the antenna on your rooftop for optimal performance. The antenna may be installed in an attic, but this may cause loss of signal strength. Face the front of the antenna towards the transmitting towers. Don't know where your towers are? Visit [www.antennapoint.com](http://www.antennapoint.com)
2. Perform the channel scan –consult your TV manual for instructions.

## WARNING

Installing antennas on windy days can be dangerous. Because of the antenna surface, even slight winds create strong forces. Be prepared to safely handle these forces at unexpected moments. Do not attempt to assemble, move or mount the antenna on windy days or serious, even fatal accidents may occur. Supersonic Inc, it not responsible or liable for damage or injury resulting from antenna installations.

## Troubleshooting:

Please read this guide carefully before you install antenna.

1. Open the box and assemble the antenna as the instructions manual shows.
2. Test antenna inside your home before you install outside.
3. Do not turn the power on from control power box before you connect antenna cable.
4. Connect antenna cable to the control box directly.
5. Do not sue a switch or splitter between the antenna and the control power box.
6. Do not leave power box ON all night overnight. After you done watching TV power OFF antenna power box to rest, then if you need to continue watching TV power in ON again.
7. Warranty information below:

Warranty Basic Warranty Statement Supersonic Inc. ("Supersonic")

Warrants this product of model **SC-609** to the original purchaser ONLY, to be free from defects in materials and workmanship under normal use, for ninety (90) days from the date of original purchase. Proof of purchase (receipt) required.

Please visit <http://www.supersonic.com/warranty> for additional information.