





### One-Handed Bar Clamps Accessories Quick Guide

The new IRWIN® QUICK-GRIP® One-Handed Bar Clamps are designed to be compatible with the new line of One-Handed Bar Clamp Accessories. The chart below outlines which accessories fit which of the newly designed clamps and which accessories can also be used with the previous generation of IRWIN® QUICK-GRIP® One-Handed Bar Clamps.

## DO MORE WITH QUICK-GRIP™

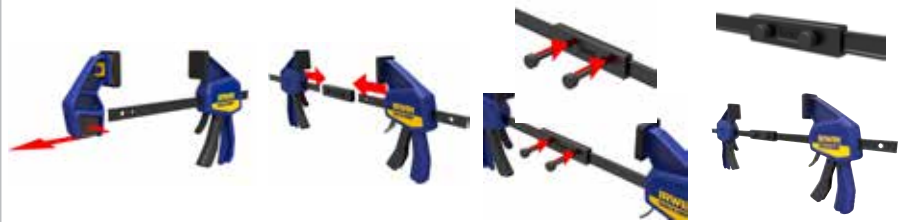
### Accessory Selection Guide

Item #:	Accessories	Medium-Duty 	Heavy-Duty 	SL300 	XP600 
1964750	Medium-Duty Clamp Coupler	✓		✓	
1964751	Heavy-Duty Clamp Coupler		✓		✓
1964752	Corner Clamp Pads	✓	✓		
1964753	Wide Pads	✓	✓		
1964754	Hold Down Jig	✓	✓	✓	✓
1964755	Edge Clamp	✓		✓	
1964756	Clamp Stand	✓	✓	✓	✓
1964757	Deck Tool Kit	✓			

### Assembly Instructions

#### Medium-Duty and Heavy-Duty Couplers

1. Detach removable jaws from two Medium-Duty or two Heavy-Duty Clamps
2. Slide bar into coupler from either side
3. Use the pins to secure the bars inside the coupler on both ends



#### Corner Clamp

1. Remove soft pads and swivel jaws from the Medium-Duty or Heavy-Duty Clamp
2. Slide large corner attachment down onto handle side of the clamp until the latch engages
3. Slide solid v-shaped soft pad onto other jaw



# One-Handed Bar Clamp Accessories

## Quick Reference Guide

### Wide Pads

1. Remove soft pads and swivel jaws from the Medium-Duty or Heavy-Duty Clamp
2. Slide wide pads onto jaws until latch engages



### Hold Down Jig

1. Drill a 3/4" hole for Medium-Duty Clamps or a 1" hole for Heavy-Duty Clamps into work table
2. Mount the bar guide and mounting base on the underside of the work table, centered around the pilot hole, and screw into place with the 4 provided screws
3. Detach the removable jaw from the clamp
4. Insert bar into hold down accessory (use provided adapter for Medium-Duty Clamps) and secure with provided pin by inserting it through the side of the accessory and through the bar of the clamp



### Edge Clamp

1. Detach removable jaw from Medium-Duty Clamp
2. Slide the Edge Clamp accessory onto the bar of the clamp
3. Replace the detachable jaw of the clamp



### Stand

1. Detach removable jaw from Medium-Duty or Heavy-Duty Clamp
2. Slide the correct MD300 or HD600 (marked on each bar adapter) Bar Adapter onto the bar of the clamp
3. Replace the detachable jaw of the clamp
4. Install/snap the Stand assembly to the attached Bar Adapter on the clamp



### Deck Tool

1. Remove soft pads from both jaws of the Medium-Duty Clamp
2. Remove the swivel jaw from Medium-Duty Clamp
3. Slide deck tool attachments onto jaws from top until the latch engages

