



.....

ENDURO™ 2

ULTRAPERFORMANCE MULTISPORT GPS WATCH

NEW PRODUCT ANNOUNCEMENT

OVERVIEW | FEATURES | COMPARISON | CONFIGURATIONS
SPECIFICATIONS | MERCHANDISING | COMPATIBILITY

.....

MARKETING MEMO

Aug. 9, 2022

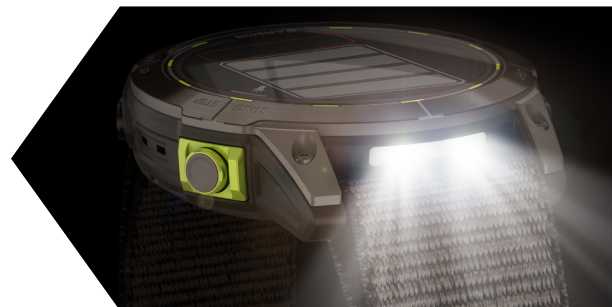


PRODUCT OVERVIEW:

Run to the ends of the earth with the Enduro 2 ultraperformance multisport GPS watch. Solar power provides battery life of up to 150 hours in GPS mode¹ to help you outlast your next ultrarace. SatIQ™ technology dynamically changes the GPS setting to maximize battery without compromising accuracy. The rugged, lightweight design won't slow you down, and the light UltraFit band offers a secure, comfortable fit during all your activities. TopoActive and ski maps will help you find your way, while a variety of built-in sports apps as well as endurance, stamina and other performance metrics will help take your training to the next level. And use traditional button controls or the new touchscreen interface to access selections. Enduro 2 includes an Adventure Racing World Series-approved adventure racing app. Plus, its advanced features, including NextFork™ map guide, grade-adjusted pace and automatic rest timer for ultraruns, help you prepare to go the distance. A superbright LED flashlight (twice as bright as the fēnix® 7X multisport GPS watch) even guides you in the dark.



Enduro 2



KEY FEATURES:

IMPROVED	SOLAR CHARGED BATTERY	Get up to 46 days of battery life in smartwatch mode ² for an uninterrupted picture of your health and fitness — and up to 150 hours in GPS mode ¹ to get the most out of your training and races.
NEW	BUILT FOR EXTREMES	The rugged, sophisticated and lightweight design features a large 1.4" solar-charged display and 51-mm case with sapphire lens and titanium bezel and rear case. The UltraFit band provides long-distance comfort – even in punishing conditions.
NEW	TOUCHSCREEN AND BUTTONS	Traditional button controls that work in any environment are matched with a responsive new touchscreen interface for quick access to selections and functions.
	TRAIL RUN VO2 MAX	Trail run VO2 max estimates the cardiovascular fitness level of trail runners by adjusting based on the varying trail and terrain conditions that can affect run performance.
	ULTRARUN ACTIVITY	Use the ultrarun activity with rest timer, and log the time you spend at aid stations.
	ADVENTURE RACING APP	This activity profile allows you to see heart rate, elevation, segment times and other metrics when the race is on. It records GPS in this mode but is unavailable for viewing, in keeping with adventure race rules. A summary screen even helps verify your finish time with the race committee.
	CLIMBPRO FEATURE	Use the ClimbPro ascent planner on downloaded courses to see real-time information on your current and upcoming climbs, including gradient, distance and elevation gain — as well as descents and flats.
	PACEPRO™ TECHNOLOGY	A first-of-its-kind PacePro feature helps keep you on pace with grade-adjusted guidance as you run a course.
NEW	GRADE-ADJUSTED PACE	Understand how to adjust your pace over varying terrain to perform according to your plan.
NEW	VISUAL RACE PREDICTOR	Based on your running history and overall fitness level, this feature provides an estimate of what your pace could be for the distance you want to run. Trend data shows how your training is having an impact over time so you can close in on that next PR.
	HEAT AND ALTITUDE ACCLIMATION	Prepare yourself for any environment. When paired with your compatible smartphone, see how your body is holding up in different environments with heat and altitude acclimation .
	PERFORMANCE METRICS	View advanced training metrics that include running dynamics, heat- and altitude-adjusted VO2 max, trail running adjustment, recovery advisor and more.
NEW	AUTOMATIC REST TIMER	During an ultrarun activity your watch automatically keeps track of time spent at an aid station or checkpoint — so you don't need to worry about pausing your run.
	BUILT-IN SPORTS APPS	Use preloaded activity profiles for trail running, swimming, running, biking, hiking, rowing, skiing, golfing, surfing, indoor climbing and more.
	RECOVERY TIME ADVISOR	After each workout, recovery time lets you know when you'll be ready for another hard workout. It even accounts for training intensity and factors such as stress, daily activity and sleep.
	DAILY WORKOUT SUGGESTIONS	For training guidance that takes you and your fitness level into account, get daily run and ride recommendations based on your current training load and training status.
	BACKCOUNTRY SKI	Stay informed when you're in the snow. This preloaded profile helps distinguish between skiing and climbing. It shows metrics specific to either ascent or descent.
	XC SKI DYNAMICS	When paired with the HRM-Pro™ Plus chest strap (sold separately), the ski power metric helps measure the actual exercise load of your cross-country workouts.
	SURF-READY FEATURES	Get ready to catch some waves. This watch works with the Surfline Sessions™ feature, which creates a video of every wave you ride in front of a Surfline® camera ³ . So you can watch them later and see how you did with your Surfline Sessions subscription.
	MTB DYNAMICS	Track the details of every ride with mountain biking metrics plus specialized Grit™ and Flow™ measurements that rate trail difficulty and how smoothly you descend, giving you a score to beat next time.
NEW	SUPERBRIGHT FLASHLIGHT	To help guide your way in low-light conditions, a built-in superbright multi-LED flashlight (twice as bright as the fēnix® 7X multisport GPS watch) provides quick access to a bright, steady beam in either red or white light.
NEW	MULTI-BAND GNSS WITH SATIQ™ TECHNOLOGY	Multi-band GNSS with SatIQ technology ensures the best positioning accuracy in any environment while also optimizing the device's battery life.

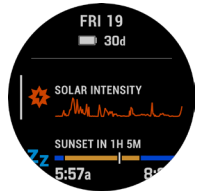
KEY FEATURES:

NEW	NEXTFORK™ MAP GUIDE	See the distance to the next trail intersection as well as the name of the upcoming trail so you can keep your bearings and stay on track.
NEW	UP AHEAD	Get at-a-glance awareness for selected points of interest checkpoints ahead. View performance metrics, split times and distance/elevation — plus a summary of key trail points coming up.
	ABC SENSORS	Navigate your next trail with ABC sensors, including an altimeter for elevation data, barometer to monitor weather and 3-axis electronic compass.
NEW	SKIVIEW™ MAPS	Take on the slopes with preloaded SkiView maps, and view run names and difficulty ratings for more than 2,000 <u>ski resorts</u> worldwide.
NEW	MULTICONTINENT TOPO MAPS	Preloaded <u>TopoActive maps</u> from around the world keep your explorations on track. Use built-in Wi-Fi® connectivity to easily load and update maps and software without using a computer.
	WRIST-BASED HEART RATE	Optical heart rate technology ⁴ gauges activity intensity as well as <u>heart rate variability</u> to calculate your stress level. It also tracks underwater without a heart rate strap.
	PULSE OX SENSOR	For altitude acclimation or sleep monitoring, a Pulse Ox sensor ⁵ uses light beams at your wrist to gauge how well your body is absorbing oxygen.
NEW	HEALTH SNAPSHOT™ FEATURE	See how your health is changing over time by logging 2-minute sessions which record key stats, including heart rate, heart rate variability, Pulse Ox, respiration and stress. Then generate a report with those stats to share via the <u>Garmin Connect™ app</u> on your compatible smartphone.
	BODY BATTERY™ ENERGY MONITORING	Optimize your body's energy reserves, using heart rate variability, stress, sleep and other data to gauge when you're ready to be active or when you may need to rest.
	SLEEP SCORE AND ADVANCED SLEEP MONITORING	Get a full breakdown of your light, deep and REM sleep stages. View it all on a dedicated widget that includes your sleep score and insights.
	RESPIRATION TRACKING	See how you're breathing throughout the day, during sleep and during breathwork and yoga activities.
	HYDRATION TRACKING	Log daily fluid intake as a reminder to stay hydrated. When auto goal is enabled, you'll even see estimated sweat loss after an activity, and your goal will adjust accordingly.
	SMART NOTIFICATIONS	Receive emails, texts and alerts right on your watch when paired with your <u>compatible device</u> .
NEW	MUSIC APPS	Download songs plus playlists from your Spotify, Deezer or Amazon Music accounts (subscription may be required) so you can listen to music on the go. Use wireless headphones (not included) for phone-free listening.
	GARMIN PAY™ CONTACTLESS PAYMENTS	Breeze through checkout lines with Garmin Pay contactless payment solution through <u>participating providers</u> .
	SAFETY AND TRACKING FEATURES	When your watch and phone are paired, a message with your location can be sent to your contacts manually or — during select outdoor activities — automatically with built-in incident detection ⁶ .
	CONNECT IQ™ STORE	Download custom watch faces, add data fields and get apps and widgets from the <u>Connect IQ Store</u> on your compatible smartphone.
NEW	HIIT WORKOUTS	This activity profile tracks your high-intensity interval training workouts, including AMRAP, EMOM, Tabata and custom. Set the number of rounds, work/rest intervals and more.
NEW	TURN-BY-TURN NAVIGATION	Follow a route or course with help from turn-by-turn directions, which let you know ahead of time when the next turn is coming.
	POWER MANAGER	View how various settings and sensors impact your watch's battery life, so you can make battery-extending changes on the fly.

ENDURO™ 2 Ultraperformance Multisport GPS Watch

NEW PRODUCT ANNOUNCEMENT

SOLAR CHARGING



SATIQ™ TECHNOLOGY



TRAIL RUN VO2 MAX



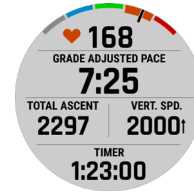
ULTRARUN ACTIVITY



NEXTFORK™ MAP GUIDE



GRADE-ADJUSTED PACE



RECOVERY TIME



RACE PREDICTOR TREND



TRAINING STATUS



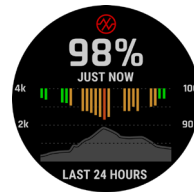
BUILT-IN SPORTS APPS



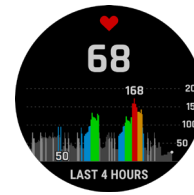
ABC SENSOR



PULSE OX



WRIST-BASED HEART RATE



ON-DEVICE SLEEP



PRODUCT COMPARISON:

	Enduro 2	fēnix® 7X Sapphire Solar	Enduro
Lens material	Power Sapphire™	Power Sapphire	Power Glass™
Weight	70 g (case only: 64 g)	89g (case only: 61g)	Steel: 71 g (case only: 65 g) Titanium: 61 g (case only: 55 g)
Band type	UltraFit 26 mm Nylon Band	QuickFit® 26 mm Silicone Band	UltraFit 26 mm Nylon Band
Solar charging	•	•	•
ABC sensors	•	•	•
Advanced Sleep Monitoring	•	•	•
Garmin Pay™ contactless payments	•	•	•
Wrist-based heart rate	•	•	•
Pulse Ox	•	•	•
Touchscreen and buttons	•	•	•
Built-in LED flashlight	• (Superbright)	•	•
Music	•	•	•
Preloaded TopoActive maps	•	•	•
Multi-band GNSS with SatIQ Technology	•	•	•
Up Ahead	•	•	•
NextFork	•	•	•
Automatic rest timer	•	•	•
Extra band included in box	•	•	•
Battery life	Smartwatch: Up to 34 days/46 days with solar ² Battery saver: Up to 111 days/550 days with solar ² GPS only: Up to 110 hrs/150 hrs with solar ¹ All satellite systems: Up to 78 hrs/96 hrs with solar ² All satellite systems & multi-band: Up to 68 hrs/81 hrs with solar ¹ All satellite systems & music: Up to 20 hrs Max battery GPS: Up to 264 hrs/714 hrs with solar ¹ Expedition GPS: Up to 77 days/172 days with solar ²	Smartwatch: Up to 28 days/37 days with solar ² Battery saver watch mode: Up to 90 days/1+ year with solar ² GPS only: Up to 89 hrs/122 hrs with solar ¹ All satellite systems: Up to 63 hrs/77 hrs with solar ² All satellite systems & multi-band: Up to 36 hrs/41 hrs with solar ¹ All satellite systems & music: Up to 16 hrs Max battery GPS: Up to 213 hrs/578 hrs with solar ¹ Expedition GPS: Up to 62 days/139 days with solar ²	Smartwatch: Up to 50 days/65 days with solar ² Battery saver watch mode: Up to 130 days/1 year with solar ² GPS: Up to 70 hrs/80 hrs with solar ¹ Max battery GPS mode: Up to 200 hrs/300 hrs with solar ¹ Expedition GPS activity: Up to 65 days/95 days with solar ²

ENDURO™ 2 Ultraperformance Multisport GPS Watch

NEW PRODUCT ANNOUNCEMENT

PRODUCT CONFIGURATIONS:

SCHEDULE B: 8517620050
HTS: 8517.62.0090

ENDURO 2



AVAILABLE	INCLUDES	COUNTRY OF ORIGIN		
NOW	Enduro 2 > Carbon gray DLC titanium with black UltraFit nylon strap, black silicone watch band, charging/data cable, documentation	Made in Taiwan. Cable made in Taiwan, China, Myanmar or Vietnam.		
DESCRIPTION	SKU	UPC	MRP (USD)	MRP (CAD)
Enduro 2	010-02754-00	753759296643	\$1,099.99 USD	\$1,429.99 CAD

PHYSICAL SPECIFICATIONS:

Enduro 2	
Unit dimensions: (WxHxD)	51 x 51 x 15.6 mm
Lens material:	Power Sapphire™
Bezel material:	Titanium
Case material:	Fiber-reinforced polymer with titanium rear cover
Display: Size, resolution, type	1.4" (35.56 mm) diameter 280 x 280 pixels Sunlight-visible, transfective memory-in-pixel (MIP)
Watch band:	Includes UltraFit (26 mm) nylon strap Includes QuickFit® 26 silicone watch band Nylon strap length: 265 mm Silicone adjustment band length: 123.9 mm Silicone buckle band length: 95.8 mm Total length of silicone adjustment and buckle bands: 219.7 mm
Wrist circumference:	UltraFit nylon band: 110-220 mm Silicone band: 127-210 mm
Weight:	70 g (case only: 64 g)
Battery type:	Rechargeable internal lithium-ion
Battery life:	Smartwatch: Up to 34 days/46 days with solar ² Battery saver: Up to 111 days/550 days with solar ² GPS only: Up to 110 hrs/150 hrs with solar ¹ All satellite systems: Up to 78 hrs/96 hrs with solar ² All satellite systems & multi-band: Up to 68 hrs/81 hrs with solar ¹ All satellite systems & music: Up to 20 hrs Max battery GPS: Up to 264 hrs/714 hrs with solar ¹ Expedition GPS: Up to 77 days/172 days with solar ²
Water rating:	10 ATM/100 meters
Wireless technologies:	BLUETOOTH®, ANT+® and Wi-Fi® technologies
Memory/history:	32 GB

PACKAGING SPECIFICATIONS:

Enduro	
Gift box dimensions: (WxHxD)	3.9" W x 3.9" H x 3.9" D (10.0 x 10.0 x 10.0 cm)
Gift box weight:	12.8 oz (364 g)
Master carton dimensions: (WxHxD)	12.9" W x 13.4" H x 12.9" D (32.7 x 33.9 x 32.7 cm)
Master carton weight:	25.6 lbs (11.6 kg)
Master carton quantity:	27

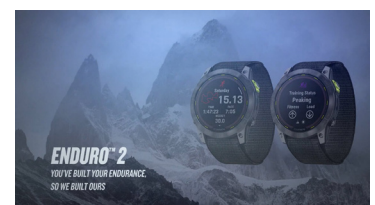


PRODUCT COPY:

Product copy can be downloaded from the [Dealer Resource Center](#).

VIDEOS:

ENDURO 2



MERCHANDISING:

DUMMY UNITS



ENDURO 2
SKU:
010-M2754-00

ACRYLIC PEDESTAL



This display is designed for small, narrow spaces and should be used inside a glass case. When featuring multiple products, pedestals may be merchandised side by side. Use with a dummy unit and small product card, both ordered separately.

SKU:
M00-10769-00
Size:
2.875" W x 2.875" D x 0.709" H

TRAY KIT SYSTEM



This display is great for small spaces and should be used inside a glass case. Displays up to two Garmin dummy units on each tray kit. For larger product assortments, tray kits may be merchandised side by side. Use with dummy units, small product cards, common features product cards, brackets, graphic back panels and trays, all ordered separately.

GRAPHIC BACK PANEL FOR THE TRAY KIT

SKU:
M00-00900-00 Size:
7" W x 9" H



This is one panel with artwork shown on both sides.

SMALL TRAY



SKU:
M00-00527-00
Size:
7" W x 6" D

ACRYLIC NONPOWERED FREESTANDING DISPLAY WITH WHEELS



This display ships as one full piece with wheels, is nonpowered, great for small narrow spaces and includes a lock and key. These displays are fully customizable and fit a variety of Garmin products. Displays up to 12 Garmin dummy units. Use with dummy units, small product cards, common features product cards, brackets and acrylic pedestals, all ordered separately.

Contact your inside sales rep or order administration representative to place an order for the display if you meet the order requirements.

SKU: **M00-10756-01**
Size: **16" W x 15" D x 68.5" H** (approximately)
Delivered by FedEx Freight
Weight on pallet: **150 lbs** (approximately)
Dimensions on pallet: **48" W x 40" D x 80" H** (approximately)

INTERCHANGEABLE MERCHANDISING COMPONENTS THAT CAN BE USED ON THE PEDESTALS, TRAY KITS AND THE ACRYLIC NONPOWERED FREESTANDING DISPLAY:

WEARABLE BRACKET

SKU: **M00-10751-00**
Size: **1.5" W x 4.0" H**



SMALL PRODUCT CARD

SKU: **M00-00909-01**
Size: **2" H x 2.5" W**



TRAY KIT/ACRYLIC DISPLAY COMMON FEATURES PRODUCT CARD - WEARABLES

SKU: **M00-00817-00**
Size: **6.75" L x 4.0" H**



MERCHANDISING CONTINUED:

GARMIN BRANDED GRAY COUNTERTOP/FREESTANDING VIDEO DISPLAY

Order these components to build your Garmin branded gray countertop/freestanding video display: dummy units, brackets, SD™ card, product card and graphics. You can also order these components to update your existing countertop or freestanding display. Contact your inside sales rep or order administration representative to place an order for the components or full display if you meet the order requirements.

Freestanding display size:
24" W x 60" T x 20" D



Countertop display size:
12" W x 17.75" T x 14" D



Final artwork is subject to change from images shown in the merchandising section. For more information on merchandising, please visit the Dealer Resource Center at Garmin.com.

COMPATIBLE PRODUCT OVERVIEW:

INREACH® MINI 2
COMPACT SATELLITE COMMUNICATOR WITH GPS



See Garmin.com for details and available devices.

HRM-PRO™ PLUS
PREMIUM HEART RATE MONITOR WITH DUAL TRANSMISSION



COMPATIBLE PRODUCT OVERVIEW CONTINUED:

VARIA™ RCT715
RADAR CAMERA TAIL LIGHT



RALLY™ XC200
DUAL-SENSING POWER METER



COMPATIBLE APPS OVERVIEW:

GARMIN CONNECT™ APP



FITNESS AT YOUR FINGERTIPS
On mobile or web, Garmin Connect is the tool for tracking, analyzing and sharing health and fitness activities recorded by your paired Garmin device.

GARMIN EXPLORE™ APP



MAP, TRACK, SYNC AND SHARE YOUR TREK FROM ANYWHERE
This all-in-one app is made for off-the-grid adventurers and outdoor enthusiasts alike. Download to your compatible smartphone so you can plan, navigate and review your next great adventure.

CONNECT IQ™ STORE APP



YOUR ONE-STOP SHOP FOR PERSONALIZING YOUR GARMIN DEVICE
The Connect IQ Store is your all-in-one source for personalizing compatible Garmin devices with free downloads of apps, widgets, watch faces, data fields, music streaming services and more.

GARMIN GOLF™ APP



COMPETE, COMPARE, CONNECT
Give every round a tournament feel by competing with fellow golfers on more than 42,000 courses around the world.*

*Requires app to be loaded on a compatible smartphone

For more information on compatible apps, please visit the product pages at Garmin.com.

COMPATIBLE ACCESSORY OVERVIEW:

ULTRAFIT NYLON STRAPS



ULTRAFIT NYLON STRAP (26 MM) - GRAY
 SKU: **010-13075-00**
 UPC: **753759270582**

ULTRAFIT NYLON STRAP (26 MM) - BLACK
 SKU: **010-13075-01**
 UPC: **753759270599**

The super-light UltraFit nylon strap is elastic, adjustable and durable. Compatible with watches that use 26-mm watch bands.

MSRP: **\$59.99 USD**

QUICKFIT® 26 WATCH BANDS



Just swap, click and go with 26 mm wide interchangeable bands for your compatible watch.

Enduro 2 watch is compatible with other QuickFit 26 bands not listed in this marketing memo. For more information on compatible accessories, please visit the product pages at Garmin.com.

CHARGING/DATA CABLE



SKU: **010-12491-01**
 UPC: **753759176860**

Recharge and transfer data using your computer's USB port. This cord also pairs with optional AC adapter (sold separately).

MSRP: **\$24.99 USD**

¹ Assumes continuous use for entire period in 50,000 lux conditions

² Assumes all-day wear with 3 hours per day outside in 50,000 lux conditions

³ When paired with the Garmin Connect smart-device app and the Surfline smart-device app

⁴ See Garmin.com/ataccuracy

⁵ This is not a medical device and is not intended for use in the diagnosis or monitoring of any medical condition; see Garmin.com/ataccuracy. Pulse Ox not available in all countries.

⁶ When paired with a [compatible smartphone](#). For safety and tracking feature requirements and limitations, see Garmin.com/safety

The Bluetooth word mark and logos are registered trademarks owned by Bluetooth SIG, Inc. and any use of such marks by Garmin is under license
 Wi-Fi is a registered trademark of the Wi-Fi Alliance
 SPOTIFY and the Spotify logo are among the registered trademarks of Spotify AB
 Amazon Music and all related logos are trademarks of Amazon.com, Inc. or its affiliates

Please note: The ECCNs and Classification numbers provided represent the opinion of Garmin International, Inc. of the proper classifications for the products today (based on the original software and/or original hardware). Classifications are subject to change. Under the U.S. export regulations, the U.S. Government assigns your organization or client, as exporter/importer of record, the responsibility for determining the correct classification of any item at the time of export/import. Depending on the products, the customer, or the country of destination, an export license may be required by the Department of Commerce prior to shipment. The Department of Commerce's Bureau of Industry and Security (former Bureau of Export Administration) website (<http://www.bis.doc.gov>) provides information that might be useful to you in determining whether you need to obtain a license for a particular shipment. To be clear, if an item described above does require a validated export license, it would be the exporter's responsibility to obtain this license prior to exportation.