

MADE, UNDER THIS WARRANTY OR AS A TORT CLAIM (INCLUDING NEGLIGENCE OR STRICT PRODUCT LIABILITY), A CONTRACT CLAIM, OR ANY OTHER CLAIM. THIS LIMITATION CANNOT BE WAIVED OR AMENDED BY ANY PERSON. THIS LIMITATION OF LIABILITY WILL BE EFFECTIVE EVEN IF SHINE FLEX OR AN AUTHORIZED REPRESENTATIVE OF SHINE FLEX HAS BEEN ADVISED BY YOU OF THE POSSIBILITY OF ANY SUCH DAMAGES.

Some states and countries do not allow limitations on how long an implied warranty lasts and do not allow the exclusion or limitation of incidental or consequential damages, so the above limitations may not apply to you. This warranty gives you specific legal rights, and you may also have other rights which vary from state to state and country to country.

Provided that the product was purchased from Shine Flex itself or through its authorized reseller or agent and utilized in the U.S.A., Shine Flex will, without charge, repair or replace, at its option, defective products, products or component parts upon delivery to the authorized Shine Flex Authorized Service Center, accompanied by proof of the date of first customer purchase, such as a duplicated copy of a sales receipt.

You must pay any initial shipping charges required to ship the product for warranty service, but the return charges, to an address in the U.S.A, will be at Shine Flex's expense, if the product is under warranty.

For Products Purchased Outside the U.S.A.

Please contact your authorized local reseller or agent for warranty information.

Trademark Acknowledgment

Bushnell is a trademark of Vista Outdoor Operations LLC and its affiliates, used under license.

© 2023 Bushnell

U.S. & Canada Only

Product Manufactured by:

Shine Flex US LLC, Illinois, USA.

For product, service or warranty information and manuals in other languages contact us at:

www.shineflexglobal.com (855) 224-5127

For other information, visit:

www.bushnell.com

Bushnell®



Instruction Manual

TWO-WAY RADIO MODEL

LPX550

Definitions: Safety Alert Symbols and Words

This instruction manual uses the following safety alert symbols and words to alert you to hazardous situations and your risk of personal injury or property damage.

⚠ DANGER: Indicates an imminently hazardous situation which, if not avoided, **will result in death or serious injury.**

⚠ WARNING: Indicates a potentially hazardous situation which, if not avoided, **could result in death or serious injury.**

⚠ CAUTION: Indicates a potentially hazardous situation which, if not avoided, **may result in minor or moderate injury.**

⚠ (Used without word) Indicates a safety related message.

NOTICE: Indicates a practice **not related to personal injury** which, if not avoided, **may result in property damage.**

Important Safety Instructions

⚠ WARNING: To reduce risk of injury:

Before any use, be sure everyone using this unit reads and understands all safety instructions and other information contained in this manual.

Save these instructions and review frequently.

1. Only accessories included in this package or specified by the manufacturer should be used with the radio. The 5V USB-C charging input is compatible with USB chargers that fully conform to the USB standards.
2. Do not use cleaners or solvents to clean the exterior of the radio. Use only a damp or dry cloth.
3. Do not expose this product to splashing or dripping water.
4. Do not attempt to service the receiver yourself. Removing the cover will void the warranty. Changes or modifications not expressly approved by BUSHNELL may void the user's authority granted by the FCC to operate this device and should not be made.
5. Do not plug the wall adaptor into the power outlet if the outlet is wet.
6. Do not use any portable radio that has a damaged antenna. If a damaged antenna comes into contact with your skin, a minor burn can result.

Important Safety Instructions for Battery

⚠ WARNING: Read all safety warnings and all instructions:

Failure to follow the warnings and instructions may result in fire and/or serious injury

- Do not incinerate the battery even if it is severely damaged or is completely worn out.
- Do not discard battery in a fire. The battery pack can explode in a fire.
- Do not replace battery in any area labeled "Hazardous Atmosphere". Any sparks created in a potentially explosive atmosphere can cause an explosion or fire.
- Do not disassemble, crush, puncture, shred, or otherwise attempt to change the form of your battery.
- Do not dry a wet or damp battery with an appliance or heat source, such as a hair dryer or microwave oven.
- A small leakage of liquid from the battery cells may occur under extreme usage or temperature conditions. This does not indicate a failure. Do not open, deform or mutilate the battery as there may be corrosive materials which can cause damage to eyes or skin and may be toxic if swallowed.

However, if the outer seal is broken and this leakage gets on your skin:

- a. Wash quickly with soap and water.
- b. Neutralize with a mild acid such as lemon juice or vinegar.
- c. If battery liquid gets into your eyes, flush them with clean water for a minimum of 10 minutes and seek immediate medical attention.

This product uses Ni-MH batteries. Do not transport package if damaged, a fire hazard could exist.

For more information, please call our customer support line at **(855) 224-5127**, or email us at **cs@shinexglobal.com**.

Recycle Battery

Local, state or federal laws may prohibit disposal of batteries in ordinary trash. Consult your local waste authority for information regarding available recycling and/or disposal options.



Customer Assistance - Product Service & Support

For any questions about operating this new BUSHNELL branded product, PLEASE CONTACT US FIRST... do not return this product to the retail store. The contact information for support will vary depending on the country in which you purchased and utilize the product.

To obtain warranty service or other information for products purchased from Shine Flex itself or through its authorized reseller or agent and utilized in the U.S.A., please email us at cs@shineflexglobal.com. You will receive instructions on how to ship the products at your expense to an our Authorized Service Center. To obtain service, you must include: (a) a copy of your receipt, bill of sale or other comparable proof of purchase; (b) a written description of the problem; and, most importantly; (c) your address and telephone number.

For further information needed on its features, please visit www.shineflexglobal.com for frequently asked questions and the electronic manual.

© 2023 Shine Flex US LLC, Illinois, USA

⚠ CAUTION:

Exposure to high volume sound levels may cause temporary or permanent damage to your hearing. Although there is no single volume setting that is appropriate for everyone, you should always use your radio with the volume set at low level and avoid prolonged exposure to high volume sound levels.

1. Set the volume control in a low position and use as low a volume as possible.
2. Avoid turning up the volume to block out noisy surroundings. Whenever possible, use your radio in a quiet environment with low background noise.
3. Limit the amount of time you use headsets or earpiece at high volume levels.
4. When using the radio without a headset or earpiece, do not place the radio's speaker directly against your ear.
5. Observe all signs and instructions that require an electrical device or RF radio product to be switched off in designated areas, such as gas/refueling stations, hospitals, blasting areas, potentially explosive atmospheres, or aircraft.

6. If you experience a skin irritation after using this product, discontinue use and seek medical attention.
7. If the product or charger: overheats; has a damaged cord or plug; has been dropped or damaged; has been dropped into water, disconnect any charger from its power supply, discontinue use of the product.

Electromagnetic Interference

Nearly every electronic device is susceptible to electromagnetic interference (EMI) if inadequately shielded, designed, or otherwise configured for electromagnetic compatibility. Turn off your radio in any facility where posted notices instruct you to do so. These facilities may include hospitals or health care facilities that may be using equipment that is sensitive to external RF energy.

- When instructed to do so, turn off your radios when on board an aircraft. Any use of a RF device must be in accordance with applicable laws, regulations and airline crew instructions.
- Some radios may interfere with some hearing aids. In the event of such interference, you may want to consult your hearing aid manufacturer or physician to discuss alternatives.
- If you use any other personal medical device, consult the manufacturer of your device to determine if it is adequately shielded from RF energy. Your doctor or physician may be able to assist you in obtaining this information.



Introduction - Getting Started

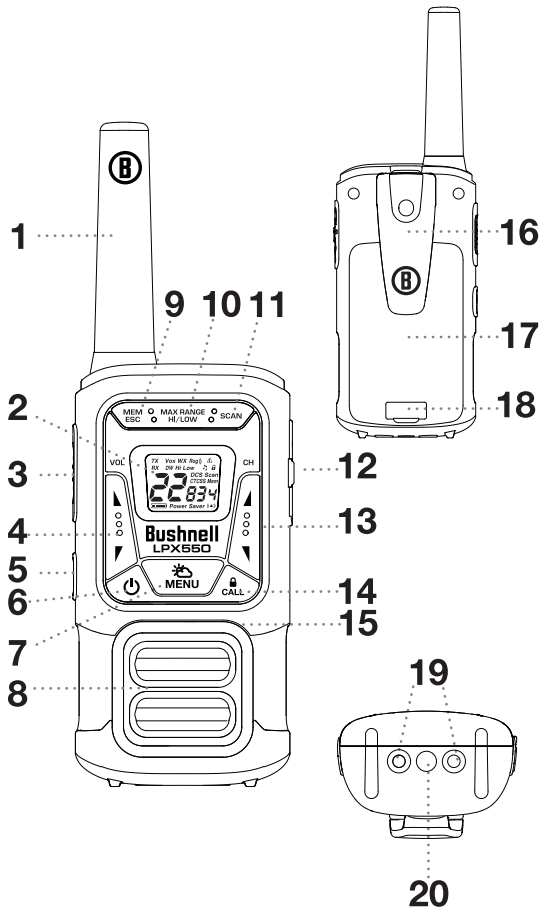
Your radio will give you years of trouble-free service if cared for properly. Handle the radio gently. Keep the radio away from dust. Never put the radio in water or in a damp place. Avoid exposure to extreme temperatures.

Pack Contents

- Handheld Radios
- Rechargeable Batteries
- USB-C Charging Cable
- Belt Clips
- Charging Dock

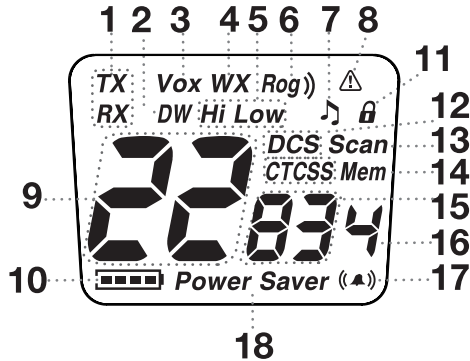
NOTE: Standard accessories may vary by model.

Product Overview



1. Antenna
2. Backlit LCD Display
3. **PUSH-TO-TALK (PTT / TALK) Button**
 - Press and hold to transmit your voice
4. **Volume Up/Down Buttons**
 - Press to increase/decrease volume
5. **LED/S.O.S. Flashlight Button**
 - Press to use the LED flashlight / turn off the flashlight or S.O.S. Flashlight function
 - Press and hold to activate S.O.S. Flashlight function
6. **Power Button**
 - Press and hold to turn the unit On or Off
7. **Menu/Weather Button**
 - Press to display menu
 - Press and hold to listen or exit NOAA All Hazards Radio channels
8. Speaker
9. **Memory/Escape Button**
 - Press to program or recall the memory location
10. **Max Range/Hi-Low Button**
 - Press to set Hi or Low Transmit Power Level
 - Press and hold to turn auto squelch/maximum range extender On or Off
11. **Scan Button**
 - Press to begin scanning channels and privacy codes in standby mode
 - Press to begin scanning between the memory locations when memory location selected
12. Microphone/Earphone/Charge Jack
13. **Channel Up/Down Buttons**
 - Press to increase/decrease channel number
 - While in mode function, press to change setting
14. **Call/Lock Button**
 - Press to send Ringtone to other radios
 - Press and hold to activate or deactivate Key Lock feature
15. MIC (Microphone)
16. Belt Clip
17. Battery Compartment
18. Battery Door Latch
19. Charging contacts (for charging dock)
20. LED Flashlight

Backlit LCD Display



1. Transmit/Receive Icon
2. Dual Watch Icon
3. VOX Icon
4. Weather Icon
5. Hi/Low Power Icon
6. Roger Beep Icon
7. Key Tone Icon
8. Weather Alert Icon
9. Channel Numbers
10. Battery Level Indicator
11. Lock Icon
12. DCS/CTCSS Icon
13. Scan Icon
14. Memory Icon
15. DCS/CTCSS Privacy Code Numbers
16. Memory Channel Number
17. Vibration Alert
18. Power Saver Icon

Product Features

- 60 Channels
- Weather Alert
- LED/S.O.S Flashlight
- Button Lock
- Charge Jack
- 121 Privacy Codes
- Battery/Power Saver
- Battery Level Indicator
- Auto Squelch
- Belt Clip
- Hands-Free Operation
- Scan
- 10 Channel Weather Radio
- 10 Memory locations
- IPX2 Water Resistant
- Vibration Alert
- Backlit LCD Display
- Call Alert
- (38 CTCSS codes/83 DCS codes) (10 selectable tones)
- Speaker/Microphone
- Roger Beep
- (Selectable On/Off)
- Keystroke Tones
- (Selectable On/Off)
- Low Battery Audible Alert
- Maximum Range Extender
- Dual Watch

Making Life Easier and Safer

Staying in touch is convenient and easy when using your radio. Some of the many uses you will discover include:

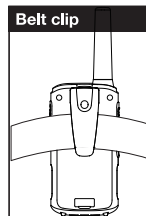
Communicating with others while hiking, biking, and working; keeping track of family and friends at a crowded public event; checking with travel

companions; connecting with neighbors; arranging meeting spots with others while shopping at the mall, talking with your colleagues in store or warehouse.

Secure your radio while on the go.

Carrying your radio with you is easy when using the belt clip.

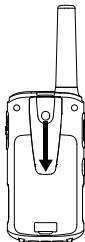
The belt clip easily attaches to your belt, purse, or backpack.



Installing the Belt Clip

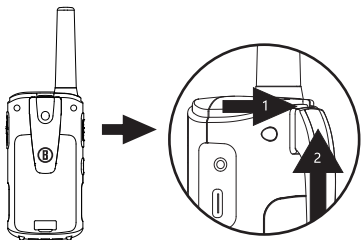
Slide the Belt clip into the slot.

A “click” indicates the Belt clip is locked into position.



Removing the Belt Clip

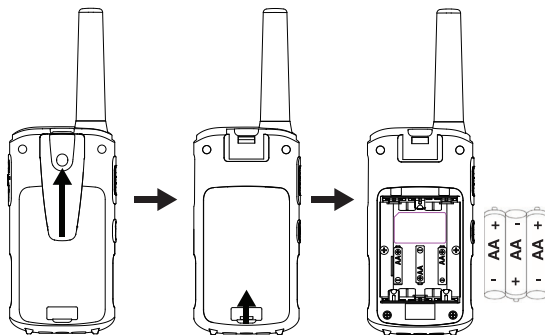
Pull the Belt Clip latch forward (away from the unit). While pulling the Belt Clip latch, push up the Belt Clip.



Installing Batteries

⚠ Caution: Observe the proper battery polarity orientation when installing batteries. Incorrect positioning can damage both the batteries and the unit.

1. Remove the belt clip. Pull up on the battery door latch to remove battery compartment cover.
2. Install the rechargeable batteries (supplied) by following the orientation.
3. Install the battery compartment cover and belt clip.



NOTE:

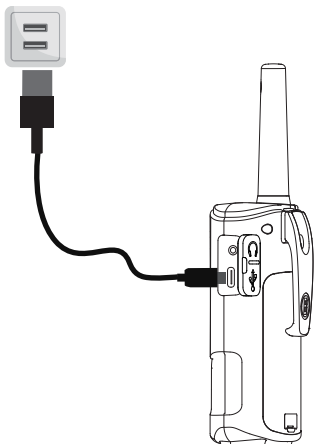
- You can use Alkaline batteries if required, however **YOU MUST NOT CHARGE THE RADIOS WITH ALKALINE BATTERIES INSERTED** as this will damage the radio.
- **NEVER** mix old and new batteries.
- Do Not mix alkaline, standard (carbon-zinc), or rechargeable (Ni-Cd, Ni-MH, etc.) batteries.
- Remove the batteries from the instrument if it is not required for extended periods of time in order to avoid damage to the radio resulting from a leaking battery.



Operation - Charge

To charge batteries in radio

1. Check to see that the batteries have been inserted properly.
2. Insert the USB-C Cable into the charge jack located on the right of the radio.
3. Plug the cable into USB-compatible power port.



NOTE:

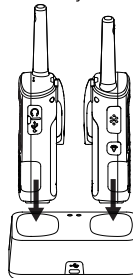
- Use only the supplied rechargeable batteries for recharging your Bushnell radio.
- Bushnell recommends your radio is turned off while being charged.
- The batteries can take more than 12-14 hours to fully charge.
- Always use the supplied charging cable for optimal charging performance.

To charge radio(s) in charging dock

1. Insert radio(s) into charging dock as shown.
2. Insert the USB-C cable into jack on back of charging dock.
3. Plug the cable into USB compatible power port. For pluggable equipment, the socket-outlet shall be installed near the equipment and shall be easily accessible. If charging light is not on, check position of radio. Radio should be upright. The charge indicator light will stay on (Red) as long as the radio is in the charging well, and the light will go off when the charging is complete. After fully charged, if the radio is kept placing on the charging dock for a long time (over ~10 hours), the charging dock will maintain the radio battery level by charging intermittently and the charging light will turn on and off every several seconds.

NOTE:

- Use only the supplied rechargeable batteries for recharging your Bushnell radio.
- Bushnell recommends your radio is turned off while being charged.
- The batteries can take more than 12-14 hours to fully charge.
- Always use the supplied charging cable for optimal charging performance.



LPX550 Charging dock

Input: 5V DC 1000mA

Output: 2 x (5V DC 400mA)



Operation - Quick Start

Please ensure all ports are properly closed prior to use.

1. Press and hold the **Power** button to turn on your radio.
 2. Press the **Channel Up/Down** button to select a channel.
- NOTE:** Both radios must be tuned to the same channel/privacy code to communicate.
3. Press the **Talk** button to confirm the channel setting.
 4. Press and hold the **Talk** button while speak into the microphone.
 5. When finished talking, release the **Talk** button and listen for a response.



Operation - Using Your Radio

LCD Screen Back Light

Every time the **Power, Channel Up/Down, Volume Up/Down, Menu, Scan, Max Range/Hi-Low, Escape/Memory** button is activated, the LCD Screen back light will illuminate for 6 seconds.

Microphone/Earphone/Charge Jack

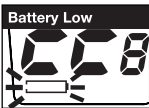
Your radio is equipped with an auxilliary microphone, earphone and charge jack located on the right of the radio.

Turning the Unit ON/OFF

To Turn ON: Press & hold **Power** button for 2 seconds until the LCD screen turns ON and displays the current channel.

To switch OFF: Press and hold **Power** button for 2 seconds until the LCD screen turns blank.

Battery Low



When battery power is low, the Battery Low icon will blink and an audible tone will sound twice before the radio shuts off. Your batteries need to be recharged. The radio will display flashing battery icon while charging if the radio is on.

Battery life

Your radio has a built-in power saver to make the batteries last longer. But when you are not using the units, turn them OFF to conserve battery power.

Auto Battery Save



If there are no transmissions within 10 seconds, the radio will automatically switch to Battery Save mode and the Power Saver icon will flash in the display. This will not affect the radio's ability to receive incoming transmissions.

Communicating with Another Person



1. Press and hold the **Talk** button.
2. With the microphone about 2 inches (5 cm) from your mouth, speak in a normal voice.
3. Release the **Talk** button when you are finished talking and listen for a response.

NOTE:

- You cannot receive incoming calls while pressing the Talk button.
- Both radios must be tuned to the same channel/privacy code to communicate.

Channel Selection

The radio has 60 channels, Channel 1~22 are compatible with other brands of Two-Way radios.



With the radio **on**, select any of the 60 channels by pressing the **Channel Up** or **Channel Down** button.

NOTE:

- Both radios must be tuned to the same channel to communicate.
- See page 24 for frequency allocation charts.
- The privacy codes of CH23-60 are fixed, so there are no CTCSS or DCS setting on these channels.
- If the selected channel is the same as the dual watch channel, the dual watch function will turn off automatically. (see page 18 for Dual Watch setting)

Listening for a Response

Release the **Talk** button to receive incoming transmissions. Your radio is always in **Standby** mode while the Talk or Call button is not pressed.

To Adjust Volume

Adjust Volume



In **Standby** mode, press the **Volume Up** or **Volume Down** button.

A triple beep sound is used to indicate the minimum or maximum volume levels (1 through 8).

NOTE:

- Do not hold the radio close to your ear. If the volume is set to an uncomfortable level, it could hurt your ear.
- Keeps your headphone audio at a comfortable level to avoid damage your ear.

Call Button

Press and release the **Call** button to alert others that you are calling. The other person will hear a 3 seconds call tone. This tone is used only to establish voice communications.

NOTE: See page 20 on how to select between 10 call tone settings.

Key Lock

Key Lock Icon



The Lock function locks the **Channel Up**, **Channel Down**, **MEM/ESC**, **Scan**, **Max Range/Hi-Low** and **Menu/Weather** buttons to prevent accidental operation.

To turn the lock on or off: Press and hold the **Lock** Button for 3 seconds.

A double beep sound is used to confirm your lock on or off request. When in **Lock** mode, the **Lock** icon will be displayed.

NOTE: Lock function turns off automatically after power off and on.

LED/S.O.S. Flashlight

Press and release the **LED/S.O.S Flashlight** button below the Talk button to use the LED flashlight located at the top of the radio.

To activate S.O.S. Flashlight function, press and hold the **LED/S.O.S Flashlight** button to turn on. Press and release to turn off the flashlight or S.O.S. function.

NOTE: In order to prevent misoperation and save power, the LED flashlight will automatically turn off after 5 minutes.

Auto Squelch/Maximum Range

Your radio will automatically shut off weak transmissions and unwanted noise due to terrain, conditions or if you've reached your Maximum Range limit.

You can turn off auto squelch (or turn on maximum range extender), allowing all signals to be received and extending the maximum range of your radio.

To turn maximum range extender on (Turn off auto squelch), press and hold the **Max Range** button for at least 3 seconds to turn on the maximum range extender.

To turn maximum range extender off (Turn on auto squelch), press and hold the **Max Range** button to turn off the maximum range extender.

Transmitting range

The talk range depends on the environment and terrain. In general the radio can reach further in wide open spaces, without obstructions such as hills or buildings. It will be affected by concrete structures, heavy foliage and by operating radios indoors or in vehicles. Don't try to use two radio units which are less than 5 m (16 feet) apart. Otherwise, you may experience interference.



Optimal Range
Outdoors Flat,
open areas



Medium Range
Outdoors Buildings or
trees. Also near
residential buildings



Minimal Range Outdoors
Dense foliage or
mountains. Also inside
some buildings

⚠ IMPORTANT SAFETY WARNING:

To reduce radio frequency exposure when you are using your hand-held, hold the unit at least 5 cm (2 inches) away from your face.

Set High / Low (Hi-Low) Transmit Power Level

Your radio can transmit selectively at 0.5 or 2 watts of power. Use the low power setting for short-range communications and use the high power setting for long-range communications.

To toggle between Hi-Low Power Modes




Press the **Hi** or **Low** button to toggle between Hi-Low power models.

NOTE: Channel 8-14, 34-37, 53-56 only operate on Low power setting.

Scrolling Through the Menu Function

By scrolling through the Menu function, you will be able to select or turn on preferred features of your radio. When scrolling through the Menu function, your radio features will be displaced in the same predetermined order:

- 
- Set CTCSS Privacy Codes
 - Set DCS Privacy Codes
 - Set Vox On/Off
 - Set Vox Sensitivity
 - Set Dual Watch
 - Set Call Tones 1-10
 - Set Vibration alert On/Off
 - Set Roger Beep On/Off
 - Set Key Tones On/Off

Privacy Codes

Your radio incorporates two advanced coded squelch system that can help to reduce interference from other users on any given channel. CTCSS (Continuous Tone Coded Squelch System) provides 38 privacy codes and DCS (Digital Coded Squelch) provides 83 privacy codes. This provides a total of 121 **Privacy Codes**. Either system can be used on channels (CH1-CH22), but both systems cannot be used on the same channel at the same time.

NOTE:

- To successfully communicate using a privacy code, both the sending and receiving radios must be tuned to the same channel and to the same privacy code system (CTCSS or DCS) and privacy code number. Each channel will remember the last privacy code system and number you select.
- The privacy code 00 is not a privacy code, but allows all signals to be heard on a channel that is set to 00 on both the CTCSS and DCS systems.

Set CTCSS Privacy Codes

To Select a CTCSS privacy code:



1. After selecting a channel (only be available on channel 1~22), press the **Menu** button until the **CTCSS** icon appears and the small numbers next to the channel number flash on the display. (00 through 38)

NOTE: If DCS is turned on at the channel selected, the display will flash the **CTCSS** icon and "OFF". To switch from DCS to CTCSS, press the **Channel Up** or **Channel Down** button while the display is flashing "OFF". The display will then show the small numbers flashing and you will then be able to proceed to step 2.

2. Press the **Channel Up** or **Channel Down** button to select a privacy code. You can hold the **Up** or **Down** button for fast advance.
3. When your desired CTCSS privacy code is displayed, choose one of the following:
 - a. Press the **Menu** button to enter the new setting and proceed to other functions.
 - b. Press the **Talk** or **Call** button to enter the new setting and return to **Standby** mode.
 - c. Do not press any buttons for 6 seconds to enter the new setting and return to **Standby** mode.

Set DCS Privacy Codes



1. After selecting a channel (only be available on channel 1~22), press the **Menu** button until the **DCS** icon appears and the small numbers next to the channel number flash on the display (00 through 83).

NOTE: If CTCSS is turned on at the channel selected, the display will flash the **DCS** icon and "OFF". To switch from CTCSS to DCS, press the **Channel Up** or **Channel Down** button while the display is flashing "OFF". The display will then show the small numbers flashing and you will then be able to proceed to step 2.

2. Press the **Channel Up** or **Channel Down** button to select a DCS code. You can hold the **Up** or **Down** button for fast advance.
3. When your desired DCS privacy code is displayed, choose one of the following:
 - a. Press the **Menu** button to enter the new setting and proceed to other functions.
 - b. Press the **Talk** or **Call** button to enter the new setting and return to **Standby** mode.
 - c. Do not press any buttons for 6 seconds to enter the new setting and return to **Standby** mode.

Voice Activated Transmit (VOX)

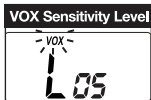
In **VOX** mode, your radio can be used "hands-free", automatically transmitting when you speak. You can set the **VOX** sensitivity level to fit the volume of your voice and avoid transmissions triggered by background noise.

To turn VOX mode on or off:



1. Press the **Menu** button until the **VOX** icon flashes on the display. The current **On** or **Off** setting is displayed.
2. Press the **Channel Up** or **Channel Down** button to turn **VOX**.
3. Choose one of the following:
 - a. Press the **Menu** button to enter the new setting and proceed to other functions.
 - b. Press the **Talk** or **Call** button to enter the new setting and return to **Standby** mode.
 - c. Do not press any buttons for 6 seconds to enter the new setting and return to **Standby** mode.

To set VOX sensitivity:



1. Press the **Menu** button until the **VOX** icon flashes and the current sensitivity level is displayed.

NOTE: The current VOX sensitivity level is displayed with letters "L" and a Number 01 through 05, with Number 05 being the most sensitive level and Number 01 being the least sensitive level.

2. Press the **Channel Up** or **Channel Down** button to change the setting.
3. Choose one of the following:
 - a. Press the **Menu** button to enter the new setting and proceed to other functions.
 - b. Press the **Talk** or **Call** button to enter the new setting and return to **Standby** mode.
 - c. Do not press any buttons for 6 seconds to enter the new setting and return to **Standby** mode.

NOTE: Every time turn on the radio, Vox will be turned off.

Set Dual Watch

Your radio is capable of monitoring two channels, the current and another (dual watch) channel. If the unit detects a signal on either channel, it will stop and receive the signal.

Dual watch channel:



1. Press the **MENU** button until the screen shows **DW** icon, "**DW**" icon will be displayed while "OFF" flashes on the LCD Screen.
2. Press the **Channel Up** or **Channel Down** button to select the Dual Watch channel (1-60, except the current channel) or select **Off** and press **Talk** or **Call** button to switch off Dual Watch mode.
3. **Dual watch CTCSS channel:** Continue pressing the **MENU** button to change the CTCSS code. Press the **Channel Up** or **Channel Down** button to select the desired CTCSS code (00-38).

Dual watch DCS channel: Continue pressing the **MENU** button to change the DCS code. Press the **Channel Up** or **Channel Down** button to select the desired DCS code (00-83).

4. Press the **Talk** or **Call** button to confirm your setting.

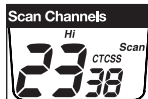
NOTE: The privacy codes of CH23-60 are fixed, so there are no CTCSS or DCS setting on these channels.

To switch off Dual Watch Mode: Press the **MENU** button until the screen shows **DW** icon. Press the **Channel Up** or **Channel Down** to select **Off** then press **Talk** or **Call** button.

Set Channel Scan

Your radio can automatically scan channels.

To scan channels:



Press the **Scan** button to begin scanning channels. In **Standby** mode, the scan function scans the channels and privacy codes of CH1-60. When **Memory location** is selected and there are more than 2 stored memory channels, the scan function scans between the memory locations. (see page 22 for memory location setting)

NOTE: The radio will check privacy codes while scanning channels.

The **Scan** icon will continue to be displayed when scan is on. Your radio will continue to scan all channels and stop if an incoming transmission is detected. Your radio will remain on that channel for 8 seconds after the last incoming transmission.

During scanning (while receiving an incoming transmission), you can choose from the following:

- a. Press and hold the **Talk** button to communicate on that channel. Your radio will remain on that channel and return to **Standby** mode.
- b. Press the **Channel Up** or **Channel Down** button to resume scanning channels.
- c. Press the **Scan**, **Talk** or **Call** button to return to **Standby** mode.

Set Call Tones 1-10

You can choose between 10 different **Call Tone Settings** to transmit a call alert.

To change a call tone setting:

Call Tone Setting



1. Press the **Menu** button until the letter "C" and the current call tone number (01 through 10) is displayed. The current call tone will sound for 3 seconds.
 2. Press the **Channel Up** or **Channel Down** button to hear the other call tone settings.
3. Choose one of the following:
- a. Press the **Menu** button to enter the new setting and proceed to other functions.
 - b. Press the **Talk** or **Call** button to enter the new setting and return to **Standby** mode.
 - c. Do not press any buttons for 6 seconds to enter the new setting and return to **Standby** mode.

Set Vibration Alert On/Off

Your radio can alert you to incoming signals by sounding an audible call tone only or both with vibrating.

To change call settings: (continue on next page)

Vibration On



1. Press the **Menu** button until the **Vibration Alert** icon flashes. The current on or off setting is displayed.
2. Press the **Channel Up** or **Channel Down** button to change the Vibration Alert on or off.

3. Choose one of the following:
 - a. Press the **Menu** button to enter the new setting and proceed to other functions.
 - b. Press the **Talk** or **Call** button to enter the new setting and return to **Standby** mode.
 - c. Do not press any buttons for 6 seconds to enter the new setting and return to **Standby** mode.

NOTE: Vibration function will be suspended during charging.

Set Roger Beep On/Off

Your listener will hear an audible tone when you release the **Talk** button. This alerts the other party that you are finished talking and it is OK for them to speak.

To turn roger beep on or off:

Roger Beep Setting



1. Press the **Menu** button until the **Roger Beep** icon flashes. The current on or off setting is displayed.
 2. Press the **Channel Up** or **Channel Down** button to select roger beep on or off.
3. Choose one of the following:
- a. Press the **Menu** button to enter the new setting and proceed to other functions.
 - b. Press the **Talk** or **Call** button to enter the new setting and return to **Standby** mode.
 - c. Do not press any buttons for 6 seconds to enter the new setting and return to **Standby** mode.

Set Key Tones On/Off

When **Key Tone** is **On**, an audible tone will sound each time a button is pressed.

To turn key tone on or off:



1. Press the **Menu** button until the **Key Tone** icon flashes. The current on or off setting is displayed.
2. Press the **Channel Up** or **Channel Down** button to select key tone on or off.
3. Choose one of the following:
 - a. Press the **Menu**, **Talk** or **Call** button to enter the new setting and return to **Standby** mode.
 - b. Do not press any buttons for 6 seconds to enter the new setting and return to **Standby** mode.

10 Memory Locations

Your radio has **10 Memory Locations** for storing your most frequently used channels and channel/privacy code combinations. These **Memory Locations** can be selected individually or can be scanned.

To program a memory location:



1. Press the **MEM/ESC** button. **Memory** icon and the **Memory Location** show on the display.
2. Press the **Channel Up** or **Channel Down** button to select the memory location (0 through 9).

NOTE: If a location has been programmed before, its associated channel/privacy code will be shown on the display.

3. Press the **MEM/ESC** button to enter a new memory location or edit an already programmed memory location.
4. Press the **Channel Up** or **Channel Down** button to select the memory location.
5. Press the **MEM/ESC** button. The channel numbers will flash on the display.
6. Press the **Channel Up** or **Channel Down** button to select a channel (1 through 60).
7. Press the **MEM/ESC** button. The **CTCSS** icon and privacy code numbers will flash on the display.
8. Choose one of the following:
 - a. Press the **Channel Up** or **Channel Down** button to select a CTCSS privacy code (00 through 38) for the channel.
 - b. Press the **MEM/ESC** button to switch the CTCSS to DCS. The DCS icon and privacy code numbers will flash on the display. The **Channel Up** or **Channel Down** button can then be used to select a DCS privacy code (00 through 83) for the channel.

NOTE:

- If "oF" flashes in place of the privacy code numbers, a privacy code is already set in the opposite (CTCSS or DCS) system. Press the **Channel Up** or **Channel Down** button to cancel the opposite code and select a privacy code from the active system for the selected channel.
 - The privacy codes of CH23-60 are fixed, so there are no CTCSS or DCS setting on these channels.
9. Choose one of the following:
 - a. Press the **MEM/ESC** button to enter the channel/privacy code in the selected memory location. Press the **Channel Up** or **Channel Down** button to proceed to the next memory location, which will flash.
 - b. Press and hold the **MEM/ESC** button to save the current state of the Set Memory Function. Press and hold the **MEM/ESC** button again return to **Standby** mode.

To recall a stored memory channel location:



1. In **Standby** mode, press the **MEM/ESC** button once for the memory icon and the memory location number to show on the display.
2. Press the **Channel Up** or **Channel Down** button to select a memory location (0 through 9).

NOTE: If a location has been programmed before, its associated channel/privacy code will be shown on the display.

3. Press and hold the **MEM/ESC** button to return to **Standby** mode on the selected memory location.

NOTE: A memory location can be reprogrammed at any time it is displayed. Press the **MEM/ESC** button to begin.

NOAA All Hazards Radio Channels

You can use your radio to listen to NOAA All Hazards Radio channels transmitting in your area.

To listen to All Hazards Radio channels:



1. In **Standby** mode, press and hold the **Weather** button until the **Weather** icon displayed.

2. Use the **Channel Up** or **Channel Down** button to change All Hazards Radio channels.
3. To exit All Hazards Radio, press the **Talk** or **Call** button to return to **Standby** mode.

NOTE: NOAA - National Oceanographic and Atmospheric Administration.

The NOAA NWR Frequency Table

Channel No.	NWR Frequency	Channel No.	NWR Frequency
1	162.5500	6	162.5000
2	162.4000	7	162.5250
3	162.4750	8	161.6500
4	162.4250	9	161.7750
5	162.4500	10	163.2750

Weather (WX) Alert Mode

Turning On the Weather Alert function will allow your radio to automatically receive NOAA weather signals and warnings from designated weather broadcast stations. If the radio is turned ON, it will alert to Weather and other emergency alerts broadcast by NOAA.

NOTE:

- This feature is set to OFF by default.
- Make sure the strongest Weather channel is selected for your area.

To turn Weather Alert On or Off



1. When All Hazards Radio is on, press the **Menu** button until the Weather Alert icon flashes on display. The current Weather Alert On or Off setting is displayed.
2. Press **Channel Up** or **Channel Down** button to turn Weather Alert On or Off.
3. Press the **Talk** or **Call** button again to save the new setting and exit the **Weather Alert** Mode. The **Weather Alert** icon show on the display when it turned on.

Factory Reset

If the radio's display locks up or stops functioning properly, you might need to reset your radio.

⚠ Caution: This procedure clears all the information you have stored in your radio.

Before you reset your radio, try turning it off and on again. If your radio is still not functioning correctly you may need to reset the radio. To reset, press and hold **Channel Up** button and **Power On** button. The radio will reset to Channel 1.



Operation - General Specifications

Frequency Allocation and Compatibility

A = Channel No. for 60 Channel Models

B = Frequency in MHz

C = Power Output

D = Code System / Code No.

A	B	C	D
1	462.5625	High	ANY
2	462.5875	High	ANY
3	462.6125	High	ANY
4	462.6375	High	ANY
5	462.6625	High	ANY
6	462.6875	High	ANY
7	462.7125	High	ANY
8	467.5625	Low	ANY
9	467.5875	Low	ANY

A	B	C	D
31	462.5875	High	DCS / 1
32	462.6375	High	DCS / 4
33	462.6875	High	DCS / 7
34	467.5625	Low	DCS / 10
35	467.6125	Low	DCS / 13
36	467.6625	Low	DCS / 16
37	467.7125	Low	DCS / 19
38	462.5750	High	DCS / 22
39	462.6250	High	DCS / 25

A	B	C	D
10	467.6125	Low	ANY
11	467.6375	Low	ANY
12	467.6625	Low	ANY
13	467.6875	Low	ANY
14	467.7125	Low	ANY
15	462.5500	High	ANY
16	462.5750	High	ANY
17	462.6000	High	ANY
18	462.6250	High	ANY
19	462.6500	High	ANY
20	462.6750	High	ANY
21	462.7000	High	ANY
22	462.7250	High	ANY
23	462.5625	High	CTCSS / 38
24	462.6125	High	CTCSS / 35
25	462.6625	High	CTCSS / 32
26	462.7125	High	CTCSS / 29
27	462.5500	High	CTCSS / 26
28	462.6000	High	CTCSS / 23
29	462.6500	High	CTCSS / 20
30	462.7000	High	CTCSS / 17

A	B	C	D
40	462.6750	High	DCS / 28
41	462.7250	High	DCS / 31
42	462.5625	High	CTCSS / 14
43	462.6125	High	CTCSS / 11
44	462.6625	High	CTCSS / 8
45	462.7125	High	CTCSS / 5
46	462.5500	High	CTCSS / 2
47	462.6000	High	CTCSS / 37
48	462.6500	High	CTCSS / 34
49	462.7000	High	CTCSS / 31
50	462.5875	High	DCS / 2
51	462.6375	High	DCS / 5
52	462.6875	High	DCS / 8
53	467.5625	Low	DCS / 11
54	467.6125	Low	DCS / 14
55	467.6625	Low	DCS / 17
56	467.7125	Low	DCS / 20
57	462.5750	High	DCS / 23
58	462.6250	High	DCS / 26
59	462.6750	High	DCS / 29
60	462.7250	High	DCS / 32



Helpful Tip - Accessories

Recommended accessories for use with your radios are available from your local dealer or authorized service center.

If you need assistance regarding accessories, please visit www.shineflexglobal.com

IMPORTANT NOTICE:

Changes or modifications to this unit not expressly approved by the party responsible for compliance could void the user's authority to operate the equipment.

This device complies with Part 15 of the FCC Rules. Operation is subject to the following two conditions: 1) This device may not cause harmful interference, and 2) this device must accept any interference received, including interference that may cause undesired operation.

FCC Warnings: Replacement or substitution of transistors, regular diodes or other parts of a unique nature, with parts other than those recommended by Bushnell may cause a violation of the technical regulations of part 95 of the FCC rules, or violation of type acceptance requirements of part 2 of the rules.

This equipment has been tested and found to comply with the limits for a Class B digital device, pursuant to Part 15 of the FCC Rules. These limits are designed to provide reasonable protection against harmful interference in a residential installation. This equipment generates, uses and can radiate radio frequency energy and, if not installed and used in accordance with the instructions, may cause harmful interference to radio communications.

However, there is no guarantee that interference will not occur in a particular installation. If this equipment does cause harmful interference to radio or television reception, which can be determined by turning the equipment off and on, the user is encouraged to try to correct the interference by one or more of the following measures:

- Reorient or relocate the receiving antenna.
- Increase the separation between the equipment and receiver.
- Connect the equipment into an outlet on a circuit different from that to which the receiver is connected.
- Consult the dealer or an experienced radio/TV technician for help.

Safety Information for Radios

Your wireless handheld portable transceiver contains a low power transmitter. When the talk button is pushed, it sends out radio frequency (RF) signals. The device is authorized to operate at a duty factor not to exceed 50%. In August 1996, the Federal Communications Commissions (FCC) adopted RF exposure guidelines with safety levels for handheld wireless devices

Important

FCC RF Exposure Requirements: For body-worn operation, this radio has been tested and meets the FCC RF exposure guidelines when used with Bushnell accessories supplied or designated for this product. Use of other accessories may not ensure compliance with FCC RF exposure guidelines. Use only the supplied antenna. Unauthorized antennas, modifications or attachments could damage the transmitter and may violate FCC regulations.

Normal Position

Hold the transmitter approximately 2 inches (5 cm) from your face and speak in a normal voice, with the antenna pointed up and away.

FCC Part 15.21 Warning Statement-

NOTE: THE GRANTEE IS NOT RESPONSIBLE FOR ANY CHANGES OR MODIFICATIONS NOT EXPRESSLY APPROVED BY THE PARTY RESPONSIBLE FOR COMPLIANCE. SUCH MODIFICATIONS COULD VOID THE USER'S AUTHORITY TO OPERATE THE EQUIPMENT.

ISED C Warning

This device complies with Innovation, Science, and Economic Development Canada licence-exempt RSS standard(s). Operation is subject to the following two conditions:

- (1) this device may not cause interference, and
- (2) this device must accept any interference, including interference that may cause undesired operation of the device.

ISED Radiation Exposure Statement

For body worn operation, this model device has been tested and meets the ISED RF exposure guidelines when used with an accessory designated for this product or when used with an accessory that Contains no metal and that positions of the face up minimum distance is 25 mm.

Any Changes or modifications not expressly approved by the party responsible for compliance could void the user's authority to operate the equipment.

Your wireless handheld portable transceiver contains a low power transmitter. When the talk button is pushed, it sends out radio frequency (RF) signals. The device is authorized to operate at a duty factor not to exceed 50%.



Warranty & Trademark Acknowledgment

Limited Lifetime Warranty on Radio

Shine Flex warrants to the original consumer purchaser only that this product and the component parts thereof, will be free from defects in workmanship and materials. During this period, Shine Flex will, repair or replace, at its sole option and discretion, this product or any defective parts. Shine Flex's liability hereunder shall be limited to repair or replacement of the defective part or parts, and such correction shall constitute a fulfillment of all of Shine Flex's warranties hereunder.

This limited warranty does not apply to accessories and consumables and is only valid for the original consumer purchaser in limited jurisdictions and is not transferrable. This limited warranty will automatically terminate prior to expiration if this product is sold or otherwise transferred to another party. The product must be purchased from Shine Flex or an authorized dealer or the warranty is void. This limited warranty is valid only for products purchased and utilized in specific jurisdictions. Please visit our website at www.shineflexglobal.com for a list of jurisdictions wherein this limited warranty is valid.

This limited warranty does not cover damage due to misuse, abuse, negligence, acts of God, accident, commercial use or modification of, or to any part of this product. This warranty does not cover damage due to improper operation, maintenance or installation; ordinary wear and tear; or attempted alterations or repairs by anyone other than Shine Flex or someone authorized by Shine Flex to do warranty work. Any unauthorized alterations or repairs will void this warranty. This limited warranty does not cover product sold AS IS or WITH ALL FAULTS. This limited warranty is invalid if the factory applied serial number or date stamp has been altered, defaced or removed from this product. This limited warranty does not cover product purchased or utilized in a jurisdiction not covered.

The procedure for obtaining service and support, and the applicability of this warranty, will vary depending on the country or jurisdiction in which you purchase and utilize the product. For details on obtaining product service, support and other warranty information please visit www.shineflexglobal.com.

This warranty gives you specific legal rights, and you may also have other rights which vary from state to state and country to country.

EXCEPT AS EXPRESSLY SET FORTH IN THIS WARRANTY, SHINE FLEX MAKES NO OTHER WARRANTIES, EXPRESSED OR IMPLIED, INCLUDING ANY IMPLIED WARRANTIES OF MERCHANTABILITY AND FITNESS FOR A PARTICULAR PURPOSE. SHINE FLEX EXPRESSLY DISCLAIMS ALL WARRANTIES NOT STATED IN THIS LIMITED WARRANTY. ANY IMPLIED WARRANTIES THAT MAY BE IMPOSED BY LAW ARE LIMITED TO THE TERMS OF THIS EXPRESSED WARRANTY.

LIMITATION OF REMEDIES AND DAMAGES. REPAIR OR REPLACEMENT AS PROVIDED UNDER THIS WARRANTY IS THE EXCLUSIVE REMEDY OF THE CONSUMER. SHINE FLEX SHALL NOT BE LIABLE FOR ANY INCIDENTAL OR CONSEQUENTIAL DAMAGES, INCLUDING BUT NOT LIMITED TO ATTORNEYS' FEES AND/OR COSTS OF LITIGATION, FOR BREACH OF ANY EXPRESS OR IMPLIED WARRANTY ON THIS PRODUCT. SHINE FLEX IS NOT LIABLE FOR ANY DAMAGES CAUSED BY THE PRODUCT OR BY THE PRODUCT TO PERFORM, INCLUDING ANY LOST PROFITS, LOST SAVINGS, INCIDENTAL DAMAGES, OR CONSEQUENTIAL DAMAGES. SHINE FLEX IS NOT LIABLE FOR ANY CLAIM MADE BY A THIRD PARTY OR MADE BY YOU FOR A THIRD PARTY. THIS LIMITATION APPLIES WHETHER DAMAGES ARE SOUGHT, OR A CLAIM