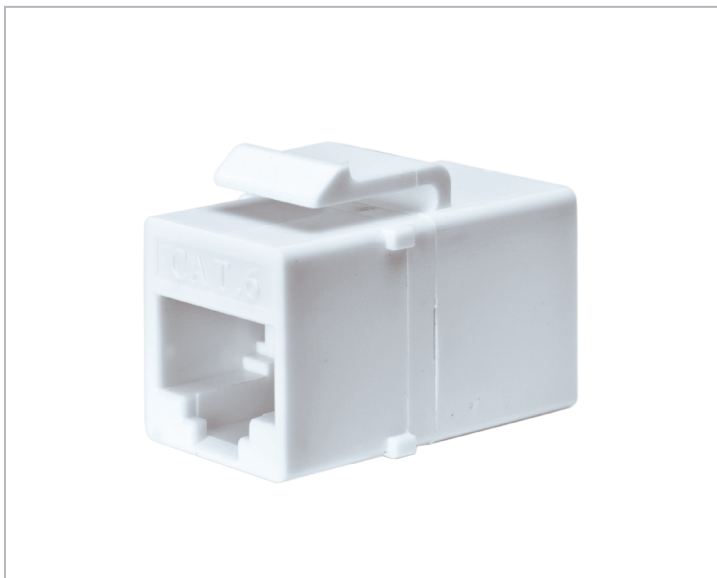




## CAT6 UTP RJ45 Keystone Coupler



### Applications

The Vericom VGC™ Category 6 UTP RJ45 Keystone Coupler supports 1000BASE-T (Gigabit Ethernet), 100BASE-T (Fast Ethernet), 155 Mb/s ATM, 622 Mb/s ATM, 1.2 Gb/s ATM, Digital video and broadband/baseband analog video, Voice over Internet Protocol (VoIP) and are backwards compatible with Category 5e systems.

### Description / Specifications

These Vericom VGC™ Category 6 UTP RJ45 Keystone Couplers can meet ANSI/TIA-568 C Category 6 and ISO 11801 Class E channel electrical performance requirements for frequencies up to 250 MHz. These inline keystone couplers snap-in to unused keystone ports to create a pass-through connection with an RJ45 jack on both the front and rear for fast plug-in connections of patch cords to both sides. These couplers are compatible with most manufacturers' faceplates, surface mount boxes or patch panels.

To maximize system performance, combine with Vericom patch panels, patch cords, and bulk cable.

### Features & Benefits

- Snap-in to unused keystone ports to create a pass-through connection for RJ45 connections.
- Excellent choice for adding a cross-connect to active electronics
- Allows for easy extension of existing network channel
- Compatible with most manufacturers' faceplates, surface mount boxes or patch panels.
- Available in black or white to suit your specific install.

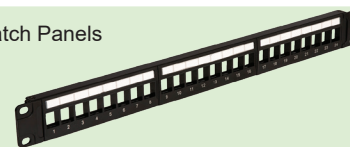
### Standards Compliance

- RoHS Compliant
- ISO/IEC 11801 Channel
- ANSI TIA/EIA-568 C Channel
- IEC 61156-5

### Related Products

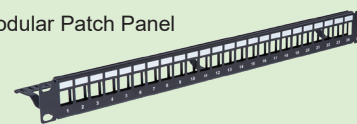
VGS™ Universal Modular Patch Panels

\*24 Port Item No. UPP6001-24  
48 Port Item No. UPP6001-48



VGC™ Universal 24 Port Modular Patch Panel

Item No. MPPKU-04040



Single Gang Keystone Wall Plates  
Available in: White

\*1 Port: Item No. XFPOP-00470  
2 Port: Item No. XFPOP-00471  
3 Port: Item No. XFPOP-00472  
4 Port: Item No. XFPOP-03418  
6 Port: Item No. XFPOP-03421



Single Gang Keystone Wall Plates with Labels  
Available in: White

\*1 Port: Item No. FP2WH1VL  
2 Port: Item No. FP2WH2VL  
3 Port: Item No. FP2WH3VL  
4 Port: Item No. FP2WH4VL  
6 Port: Item No. FP2WH6VL



TECHNICAL SHEETS ARE SUBJECT TO CHANGE WITHOUT NOTICE.

\* Pictured

REV.20210615.3



**CAT6 UTP RJ45 Keystone Coupler**

**Ordering Information**

Description	Black	White
CAT6 Unshielded RJ45 Keystone Coupler	MKJ6U-01352	MKJ6U-03670

**Construction**

**Housing:** Acrylonitrile butadiene styrene (ABS)

**Contacts:** Phosphor bronze alloy plated w/ gold over nickel plating

**Mechanical**

**Plug Retention:** 75 N (17 lbf)

**Wire Compatibility:** 22 to 26 AWG (0.644 to 0.405 mm)

**Mating Life Cycle:** Min 750 cycles

**Environmental Conditions**

**Operating Temperature:** -22 °F to 140 °F (-30 °C to 60 °C)

**Storage Temperature:** -22 °F to 140 °F (-30 °C to 60 °C)

**Technical Illustration**

