

USER GUIDE • GUIDE DE L'UTILISATEUR

# ENHANCE<sup>®</sup> SB2.1

## 2.1 High Excursion Speaker System



REGISTER NOW

ENREGISTRER

*This product comes with a 1 year limited warranty.*

**Register this product within 30 days of sale to activate a complimentary 2 year warranty extension and receive free advanced technical support. Learn more and register now.**

*Ce produit est livré avec une garantie limitée de 1 an.*

**Enregistrer ce produit dans les 30 jours de vente pour activer une extension de garantie de 2 ans gratuite et recevoir un support technique de qualité gratuit. Pour en savoir plus et vous inscrire.**

**[ENHANCEgaming.com/warranty](https://www.enhancegaming.com/warranty)**

# BECOME A VIP



Free Product Giveaways  
Exclusive Discounts  
Sneak Peek at New Products  
And More VIP Perks!

**[AccessoryPower.com/VIPclub](http://AccessoryPower.com/VIPclub)**

# IN LESS THAN 30 SECONDS

# LIKE US ON FACEBOOK



Join Our Community  
and Stay Up-To-Date  
with News & Promotions

**[Facebook.com/AccessoryPower](https://www.facebook.com/AccessoryPower)**

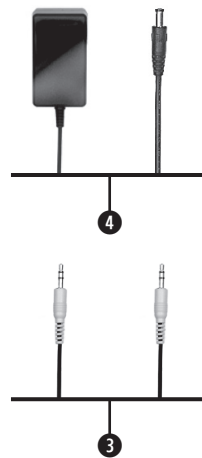


**Need help with this product?  
Besoin d'assistance sur ce produit?  
¿Necesita ayuda con este producto?  
Benötigen Sie Hilfe bei diesem Produkt?  
Hai bisogno di aiuto per questo prodotto?  
购买的产品，是否需要提供协助？**

**[ENHANCEgaming.com/support](https://enhancegaming.com/support)**

**Package contents**  
**L'emballage contient**  
**Contenidos del paquete**  
**Packungsinhalt**  
**Contenuto della confezione**  
**包装内容**

---



**EN**

- 1 Subwoofer
- 2 Satellite speakers
- 3 AUX 3.5mm cable
- 4 AC Adapter

**FR**

- 1 Caisson de basses
- 2 Haut-parleurs satellites
- 3 Câble AUX 3,5mm
- 4 Adaptateur AC

**ES**

- 1 Altavoz
- 2 Altavoces satélites
- 3 Cable AUX 3.5mm
- 4 Adaptador de CA

**DE**

- 1 Subwoofer
- 2 Satelliten Lautsprecher
- 3 AUX 3,5mm Kabel
- 4 Netzteil

**IT**

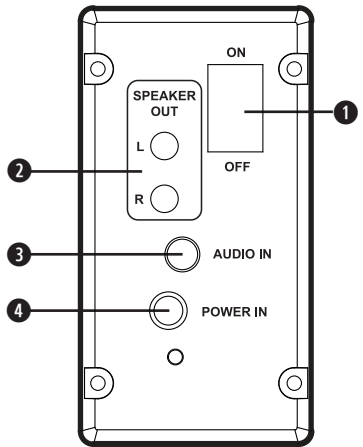
- 1 Subwoofer
- 2 Satellite altoparlanti
- 3 Cavo AUX 3,5mm
- 4 Adattatore per AC

**ZH**

- 1 低音炮
- 2 卫星音箱
- 3 AUX 3.5mm 音频线
- 4 AC 适配器

**Product diagram**  
**Schéma du produit**  
**Diagrama de product**  
**Producktabbildung**  
**Schema del prodotto**  
**产品图**

---



**EN**

- 1 Power switch
- 2 SPEAKER OUT 3.5mm ports
- 3 AUDIO IN 3.5mm port
- 4 POWER IN port
- 5 VOLUME knob
- 6 BASS knob
- 7 LED button
- 8 Satellite speaker cable

**FR**

- 1 Bouton d'alimentation
- 2 Port Satellite OUTPUT
- 3 Port Audio INPUT
- 4 Port POWER IN
- 5 Molette de VOLUME
- 6 Molette de BASS
- 7 Bouton LED
- 8 Câble du haut-parleur satellite

**ES**

- 1 Botón de encendido
- 2 OUTPUT Puerto satellite
- 3 INPUT Puerto de Audio
- 4 Puerto POWER IN
- 5 Rueda de VOLUME
- 6 Rueda de BASS
- 7 Botón para LED
- 8 Cable para los alravoces satélite

**DE**

- 1 Stromschalter
- 2 OUTPUT Satellitenanschluss
- 3 INPUT Audioport
- 4 Stromkabel
- 5 VOLUME taste
- 6 BASS taste
- 7 LED Taste
- 8 Satelliten Lautsprecherkabel

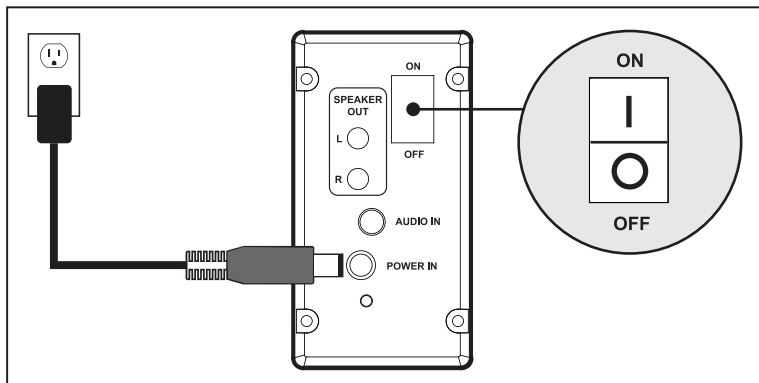
**IT**

- 1 Bottone d'accensione
- 2 Porta satellite OUTPUT
- 3 Porta audio INPUT
- 4 Porta POWER IN
- 5 VOLUME manopola
- 6 BASS manopola
- 7 LED manopola
- 8 Cavo degli speaker del satellite

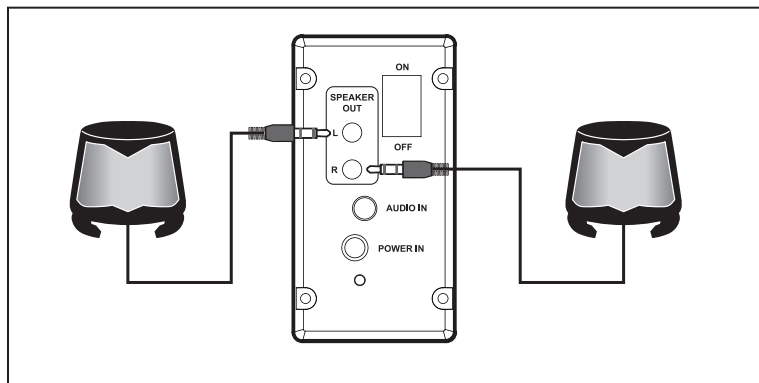
**ZH**

- 1 电源开关
- 2 OUTPUT卫星音箱接口
- 3 INPUT 音频接口
- 4 POWER IN 港口
- 5 VOLUME 旋钮
- 6 BASS 旋钮
- 7 LED 旋钮
- 8 卫星音箱连接线

## Operating instructions

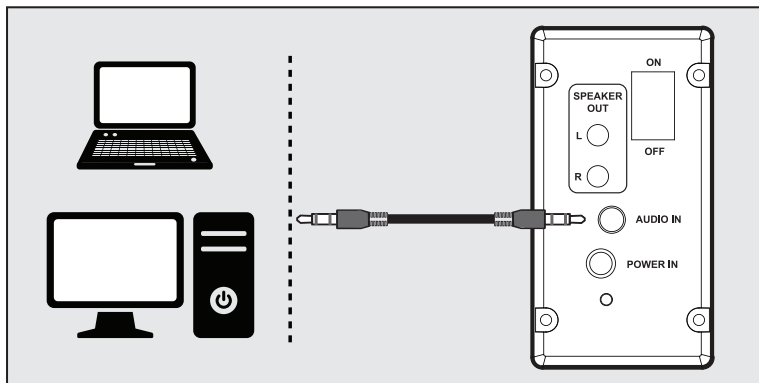


Connect to AC and power on.

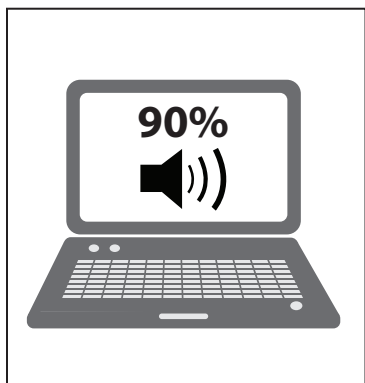


Connect the satellite speakers to the L and R SPEAKER OUT 3.5mm ports .

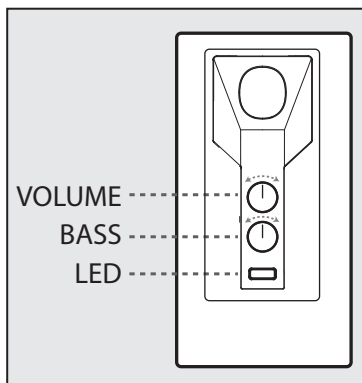




Connect the green AUX 3.5mm cable to the green AUDIO IN 3.5mm port. Connect the other end to your audio device.

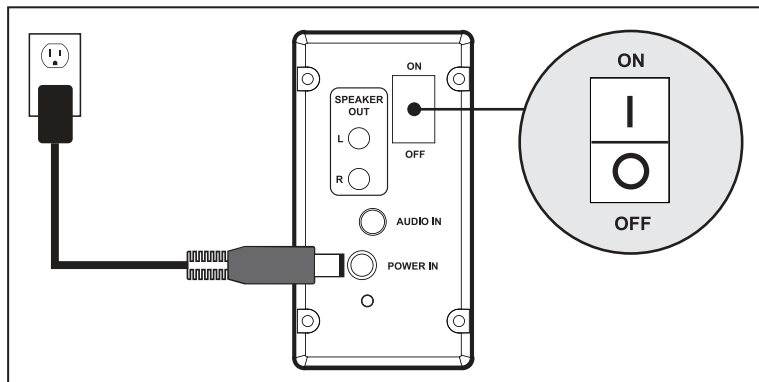


Set your device's volume to 90%.

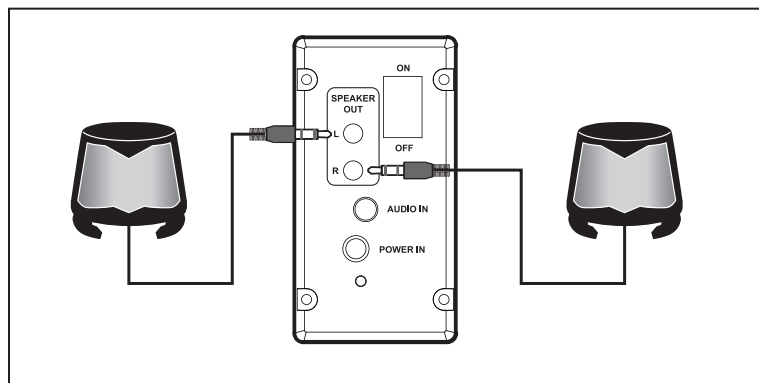


Use the VOLUME and BASS knobs to control the audio. Use the LED button to turn the LED lights ON/OFF.

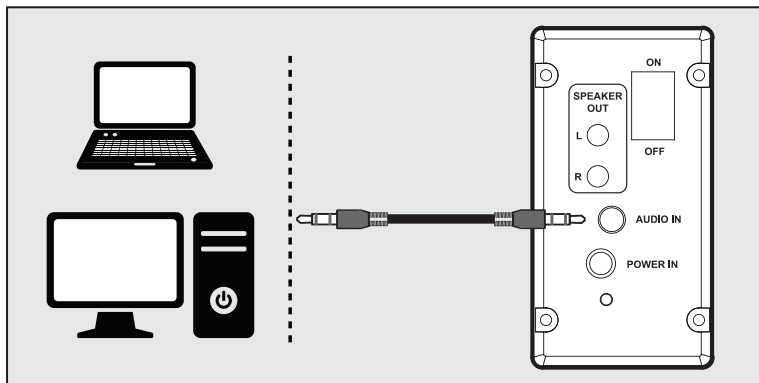
## Mode d'emploi



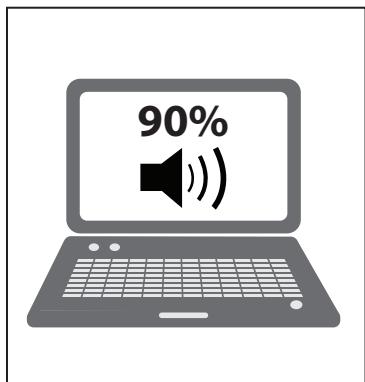
Connectez-vous au secteur et mettez-le sous tension.



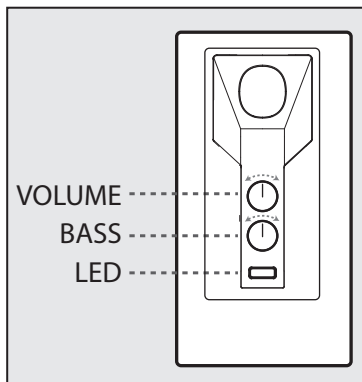
Connectez les haut-parleurs satellite aux ports L et R SPEAKER OUT 3,5 mm.



Connectez le câble vert AUX 3,5 mm au port vert AUDIO IN 3,5 mm. Connectez l'autre extrémité à votre appareil audio.

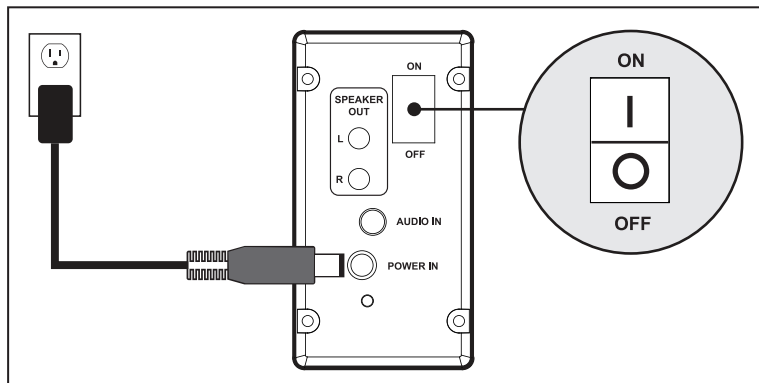


Réglez le volume de votre appareil sur 90%.

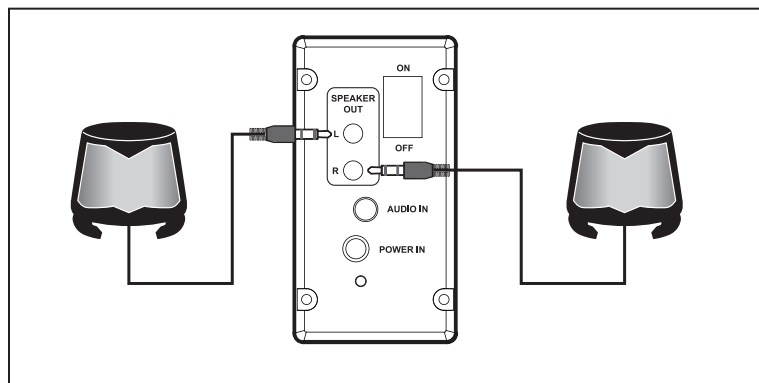


Utilisez les boutons VOLUME et BASS pour contrôler l'audio. Utilisez le bouton PULSE pour allumer / éteindre les lumières LED.

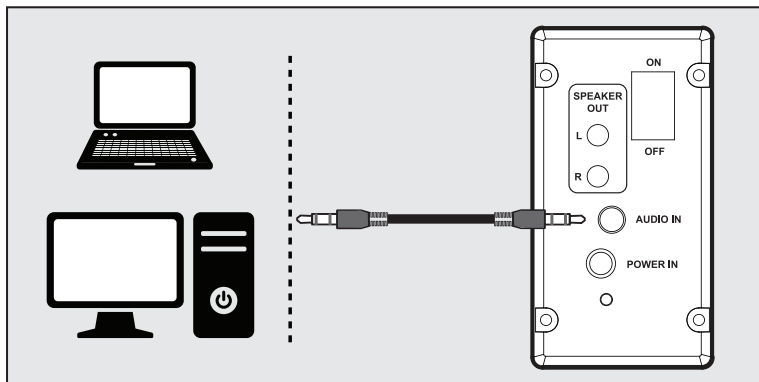
## Instrucciones de Operación



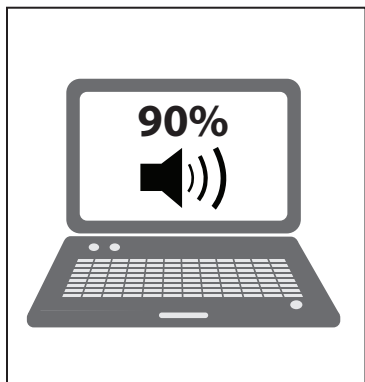
Conecte los altavoces satélite a los puertos L y R SPEAKER OUT de 3,5 mm.



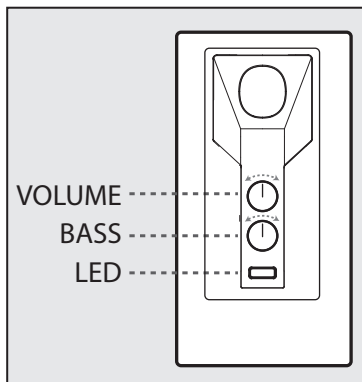
Conecte los altavoces satélite a los puertos L y R SPEAKER OUT de 3,5 mm.



Conecte el cable AUX de 3,5 mm verde al puerto AUDIO IN de 3,5 mm verde. Conecte el otro extremo a su dispositivo de audio.

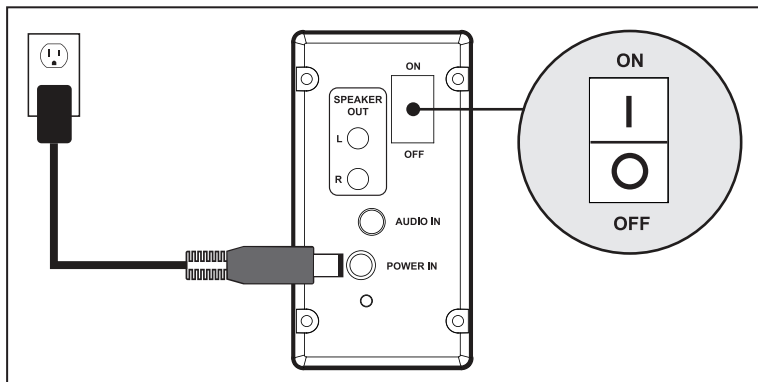


Configura el volumen de tu dispositivo al 90%.

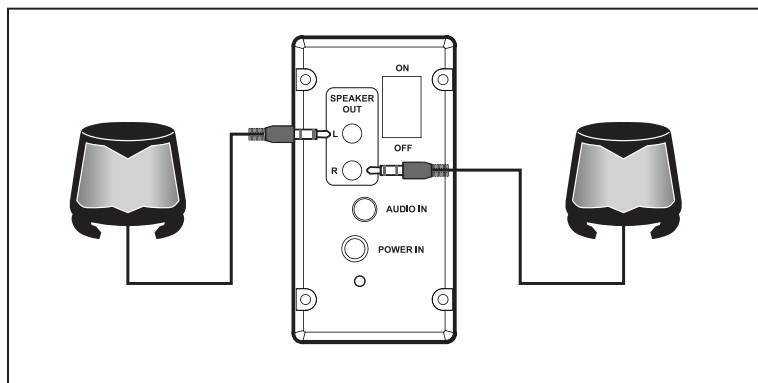


Utilice las perillas VOLUME y BASS para controlar el audio. Use el botón LED para ENCENDER / APAGAR las luces LED.

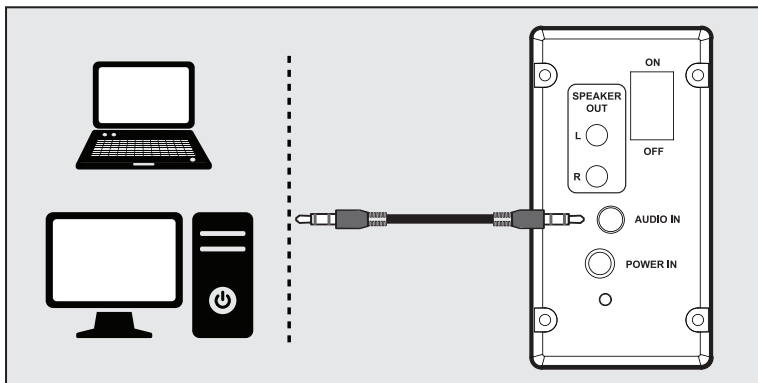
## Bedienungsanleitung



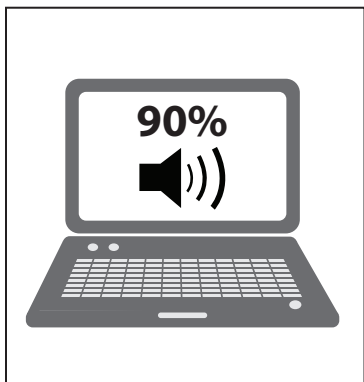
Schließen Sie die Satellitenlautsprecher an die 3,5-mm-Anschlüsse L und R SPEAKER OUT an.



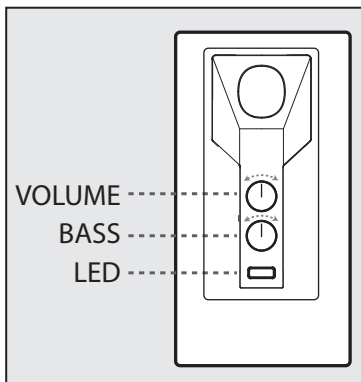
Schließen Sie die Satellitenlautsprecher an die 3,5-mm-Anschlüsse L und R SPEAKER OUT an.



Schließen Sie das grüne AUX 3,5-mm-Kabel an den grünen AUDIO IN 3,5-mm-Anschluss an. Schließen Sie das andere Ende an Ihr Audiogerät an.

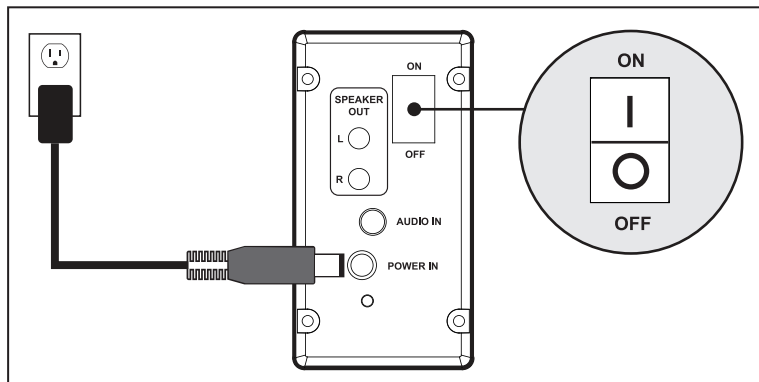


Stellen Sie die Lautstärke Ihres Geräts auf 90% ein.

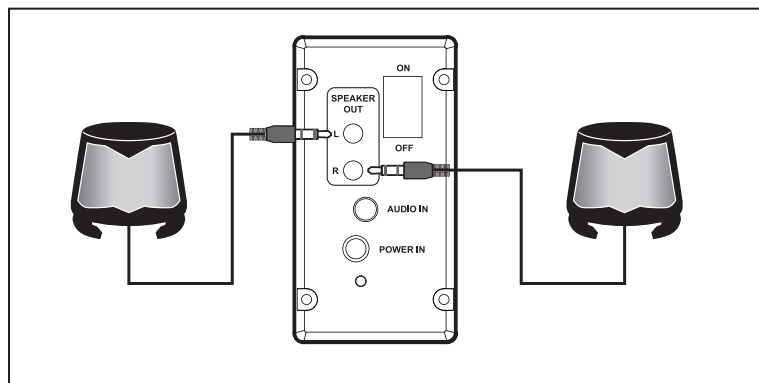


Verwenden Sie die Regler VOLUME und BASS, um das Audio zu steuern. Verwenden Sie die LED-Taste, um die LED-Leuchten ein- und auszuschalten.

## Instruzioni d'uso

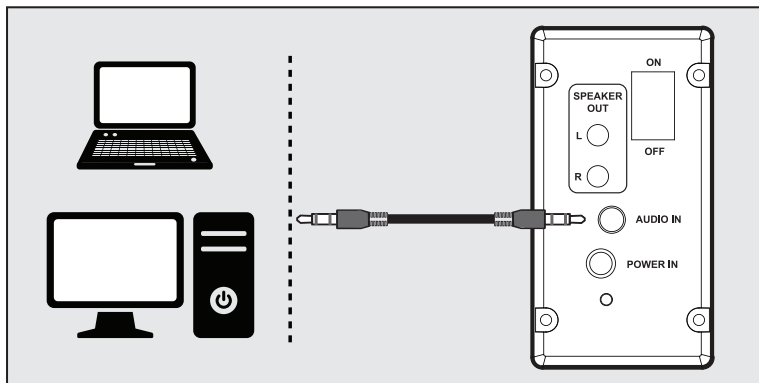


Collegarsi alla rete elettrica e accendere.

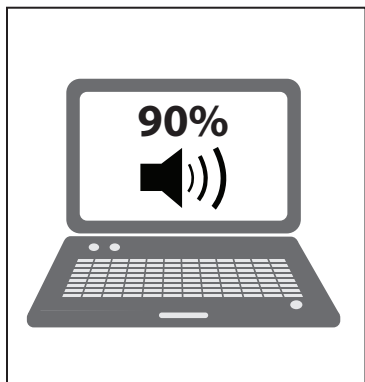


Collega gli altoparlanti satellitari alle porte L e R SPEAKER OUT da 3,5 mm.

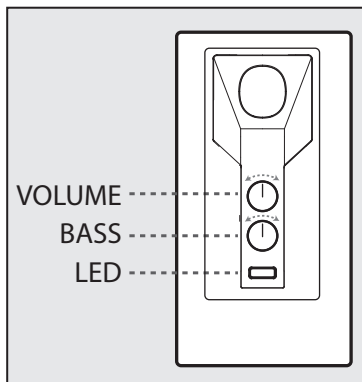




Collegare il cavo verde AUX da 3,5 mm alla porta verde AUDIO IN da 3,5 mm. Collega l'altra estremità al tuo dispositivo audio.



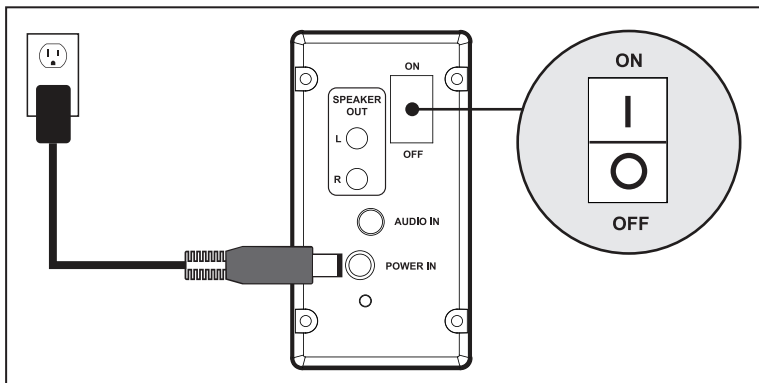
Imposta il volume del tuo dispositivo al 90%.



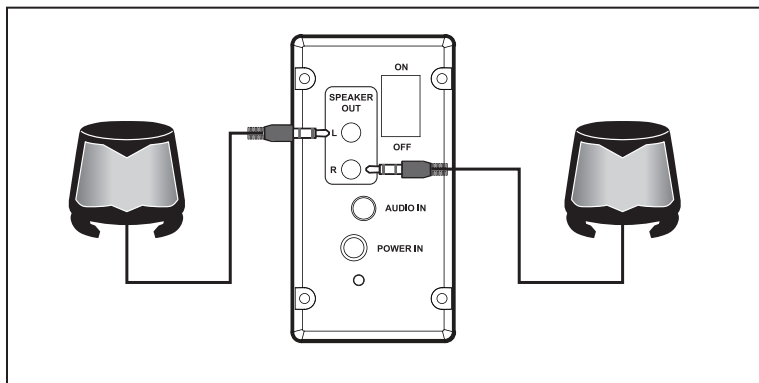
Usa le manopole VOLUME e BASS per controllare l'audio. Utilizzare il pulsante LED per accendere / spegnere le luci LED.

ZH

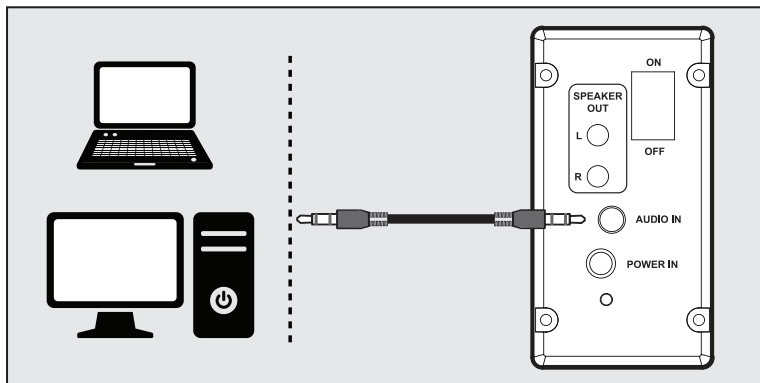
## 操作指令



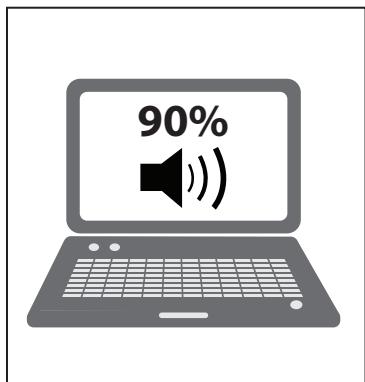
连接到交流电源并打开电源。



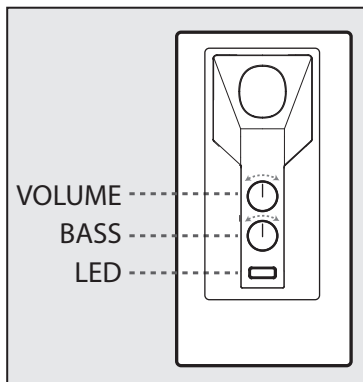
将卫星扬声器连接到L和R SPEAKER OUT 3.5毫米端口。



将绿色的AUX 3.5mm电缆连接到绿色的AUDIO IN 3.5mm端口。将另一端连接到音频设备。



将设备的音量设置为90%。



使用VOLUME和BASS旋钮控制音频。  
使用LED按钮打开/关闭LED灯。

# Best sound practices

## Conseils pour un meilleur son

## Las mejores prácticas de sonido

## Beste Soundpraxis

## Consigli per ottenere un suono ottimale

## 最佳音效做法

---

### EN

Keep your audio device at 80-90% volume for best sound transmission.  
Allow 8 hours playtime for speaker wear-in for best sound.

### FR

Gardez votre périphérique audio à un volume de 80-90% pour une transmission sonore optimale.  
Prévoir 8 heures de lecture du haut-parleur pour obtenir un son optimal.

### ES

Mantenga su dispositivo de audio en el 80-90% del volumen para una óptima transmisión de sonido.  
Permitir que 8 horas de reproducción de speaker desgaste de mejor sonido.

### DE

Lassen Sie Ihr Audiogerät bei 80 - 90 %-igem Volumen laufen, um die beste Schallübertragung zu erhalten.  
Lassen Sie den Lautsprecher 8 Stunden am Stück laufen, um die beste Klangqualität zu erhalten.

### IT

Mantenere il volume del proprio dispositivo audio all'80-90% per una migliore trasmissione del suono.  
Dopo ogni utilizzo effettuare una pausa di 8 ore per una migliore trasmissione del suono.

### ZH

您的音频设备音量保持在80%-90%即可获得最佳的声音输出  
最佳音量时 · 可播放8小时

**Product specifications**  
**Spécifications du produit**  
**Especificaciones del producto**  
**Produktspezifikationen**  
**Specifiche del prodotto**  
**产品规格**

---

Speaker power: (2.5W x 2) + 10W, 15W RMS;  
30W peak

Driver: 50mm driver, 101mm woofer

Impedance: 4 ohm x 2 drivers, 6 ohm woofer

Sensitivity: 90dB

Frequency response: 80Hz-20KHz

Total harmonic distortion: <1%

S/N Ratio: 70dB

Audio input: 3.5mm audio port

Power input: 11V = 1.5A

Dimensions: Satellite 4.75 x 4 x 3.87 inches,

Woofer 11 x 9.25 x 4.5 inches

Weight: 5.46 pounds

Puissance du haut-parleur: (2,5 W x 2) + 10 W, 15 W RMS;  
30W crête

Pilote: pilote de 50 mm, woofer de 101 mm

Impédance : 4 ohms x 2 haut-parleurs, woofer 6 ohms

Sensibilité : 90dB

Réponse en fréquence: 80Hz-20KHz

Distorsion harmonique totale: <1%

Rapport S/B: 70 dB

Entrée audio: port audio 3,5 mm

Entrée d'alimentation: 11V = 1,5A

Dimensions: Satellite 12,06 x 10,16 x 9,82 cm,

Woofer 27,94 x 23,49 x 11,43 cm

Poids: 2.47 kg



# **ENHANCE<sup>®</sup> SB2.1**

## **2.1 High Excursion Speaker System**



WARRANTY GARANTIE GARANTÍA



GARANTIE GARANZIA 保固

This product comes with a 1 year limited warranty, the acceptance of which is a condition of sale. Register this product within 30 days of sale to activate a complimentary 2 year warranty extension and receive free advanced technical support. For warranty program details, registration, and support visit [ENHANCEgaming.com/warranty](https://www.enhancegaming.com/warranty)

Ce produit à une garantie limitée de 1 an, la condition étant son achat. Enregistrer ce produit dans les 30 jours suivant son achat pour activer l'extension de garantie de 2 ans et bénéficier de notre service après-vente gratuit. Pour en savoir plus sur l'enregistrement et le service après-vente allez sur [ENHANCEgaming.com/warranty](https://www.enhancegaming.com/warranty)

Este producto viene con una garantía limitada de 1 año, la aceptación de que es una condición de la venta. Registrar este producto dentro de los 30 días de la venta para activar una extensión de cortesía 2 años de garantía y recibir soporte técnico avanzado libre. Para los detalles del programa de garantía, el registro, y una visita de apoyo [ENHANCEgaming.com/warranty](https://www.enhancegaming.com/warranty)

Dieses Produkt kommt mit einer 1-Jahres-Garantie, deren Annahme ist eine Bedingung des Verkaufs. Registrieren Sie dieses Produkt innerhalb von 30 Tagen den Verkauf an ein kostenloses 2 Jahre Garantie-Erweiterung zu aktivieren und erhalten kostenlose erweiterte technische Unterstützung. Für Garantie-Programm Details, Registrierung und Support Besuch [ENHANCEgaming.com/warranty](https://www.enhancegaming.com/warranty)

Questo prodotto viene fornito con una garanzia limitata di 1 anno, la cui accettazione è una condizione di vendita. Registra questo prodotto entro 30 giorni di vendita per attivare tutte le mattine una estensione di garanzia di 2 anni e di ricevere supporto tecnico avanzato gratuito. Per i dettagli del programma di garanzia, la registrazione e supporto visitare [ENHANCEgaming.com/warranty](https://www.enhancegaming.com/warranty)

本产品带有1年有限保修的销售承诺 · 在购买后30天内注册本产品将获赠2年延长保修及得到免费高级技术支持 · 关于保修流程的细节 · 注册和支持 · 请访问 [ENHANCEgaming.com/warranty](https://www.enhancegaming.com/warranty)

#### FCC Compliance Notice

This equipment has been tested and found to comply with the limits for a class B digital device, pursuant to part 15 of the FCC Rules. These limits are designed to provide reasonable protection against harmful interference in a residential installation. This equipment generates, uses and can radiate radio frequency energy and if not installed and used in accordance with the instructions, may cause harmful interference to radio communications. However, there is no guarantee that interference will not occur in a particular installation. If this equipment does cause harmful interference to radio or television reception, which can be determined by turning the equipment off and on, the user is encouraged to try to correct the interference by one or more of the following measures:

- Reorient or relocate the receiving antenna.
- Increase the separation between the equipment and receiver.
- Connect the equipment into an outlet on a circuit different from that to which the receiver is connected.
- Consult the dealer or an experienced radio/TV technician for help.

© 2021 AP Global, Inc. All rights reserved. Accessory Power, the Accessory Power logo, ENHANCE, the ENHANCE logo, BassPULSE and other Accessory Power marks and logos are either registered trademarks or trademarks of AP Global, Inc. in the United States and/or other countries. All other trademarks are the property of their respective owners.

**Manufactured in China. Designed in California.**

© 2021 AP Global, Inc. Tous droits réservés. Accessory Power, le logo Accessory Power, ENHANCE, le logo ENHANCE, BassPULSE et les autres marques et logos d'Accessory Power sont soit des marques déposées soit des marques de AP Global, Inc. aux États-Unis et/ou dans d'autres pays. Toutes les autres marques sont la propriété de leurs propriétaires respectifs.

**Fabriqué en Chine. Conçu en Californie.**



[YouTube.com/AccessoryPower](https://www.youtube.com/AccessoryPower)



[Facebook.com/AccessoryPower](https://www.facebook.com/AccessoryPower)



[Instagram.com/AccessoryPower](https://www.instagram.com/AccessoryPower)

**ENHANCE SB.1**  
**2.1 High Excursion  
 Speaker System**

MODEL: ENPCSB2300BLUS



[ENHANCEgaming.com/recycle](https://www.enhancegaming.com/recycle)