



.....

# VÍVOACTIVE® 5

## HEALTH AND FITNESS GPS SMARTWATCH

**NEW PRODUCT ANNOUNCEMENT**

OVERVIEW | FEATURES | COMPARISON | CONFIGURATIONS  
SPECIFICATIONS | COMPATIBILITY | MERCHANDISING

.....

### MARKETING MEMO

Sept. 20, 2023

# VIVOACTIVE® 5

## HEALTH AND FITNESS GPS SMARTWATCH

NEW PRODUCT ANNOUNCEMENT



### PRODUCT OVERVIEW:

Know the real you with the vivoactive 5 smartwatch, the ultimate on-wrist coach designed to support your goals — whatever they may be. Featuring a bright, colorful display and up to 11 days of battery life, this GPS smartwatch is purpose-built with essential health and fitness features to help you better understand your body. Body Battery™ energy monitoring helps you keep your energy levels in check with personalized insights based on sleep, naps, stress, workouts and more. Improve the quality of your sleep with personalized sleep coaching and nap detection plus even more details such as HRV status<sup>1</sup>. During the day, switch up your activities with more than 30 built-in sports apps — including apps for active wheelchair users — plus advanced training features to keep you going strong. When paired to your smartphone, vivoactive 5 makes it easy to receive texts, emails and other smart notifications right from your wrist. Plus, enjoy connectivity features such as music storage, Garmin Pay™ contactless payments and more.



# VIVOACTIVE® 5

## HEALTH AND FITNESS GPS SMARTWATCH

**NEW PRODUCT ANNOUNCEMENT**

### KEY FEATURES:

<b>NEW</b>	<b>BRIGHT AMOLED DISPLAY AND LONG BATTERY LIFE</b>	Up to 11 days in smartwatch mode, up to 21 hours in GPS
<b>NEW</b>	<b>SLEEP COACH &amp; NAP TRACKING</b>	Get a sleep score and <a href="#">personalized coaching</a> for how much sleep you need and how you can improve. Even keep track of different sleep stages and <a href="#">naps</a> — and see several key metrics over your sleep period, such as HRV status to better understand your health <sup>2</sup> .
<b>NEW</b>	<b>MORNING REPORT</b>	Receive an overview of your sleep, recovery, daily calendar, HRV status and more as soon as you wake up. You can even customize your report to show what you want to see.
<b>NEW</b>	<b>WHEELCHAIR MODE</b>	Wheelchair mode tracks pushes — rather than steps — and includes push and handcycle activities with preloaded workouts for strength, cardio, HIIT, Pilates, yoga, challenges specific to wheelchair users and more.
<b>UPDATED</b>	<b>BODY BATTERY ENERGY MONITORING</b>	See your energy levels throughout the day so you'll know when your body is charged up and ready for activity or drained and needing to recharge with restful sleep. And get even more details and personal insights on how sleep, naps, daily activities and high stress specifically impact your energy <sup>2</sup> .
	<b>30+ SPORTS APPS</b>	Track all the ways you move with more than 30 preloaded GPS and indoor sports apps — including walking, running, cycling, pool swimming, activities for wheelchair users and more.
	<b>HEALTH AND WELLNESS</b>	Know your body better with extensive health monitoring features, including wrist-based heart rate, morning report, fitness age, stress tracking, menstrual cycle and pregnancy tracking, meditation and more <sup>2</sup> .
<b>NEW</b>	<b>GEN 4 HEART RATE SENSOR</b>	More accurate heart rate sensor that can better track your workouts, improved Pulse Ox performance and more <sup>1</sup> .
<b>NEW</b>	<b>WORKOUT BENEFIT &amp; RECOVERY TIME</b>	Better understand how each workout affects your body and how much time you need to recover so you can take on any fitness challenge.
	<b>WORKOUTS &amp; GARMIN COACH</b>	Choose how you workout with workouts for strength, cardio, HIIT, yoga, Pilates and more. Create your own workouts with our exercise library and send them directly to your watch. Even get free Garmin Coach running training plans for 5K, 10K or half-marathon distances.
	<b>GARMIN CONNECT™ APP</b>	See your health and fitness information all in one place in more detail than on the watch. Find personalized insights and more.
	<b>MUSIC</b>	Listen to music from your favorite music providers phone free with your wireless headphones.
	<b>GARMIN PAY CONTACTLESS PAYMENTS</b>	Breeze through checkout lines and select transit systems with Garmin Pay contactless payment solution through <a href="#">participating providers</a> .
	<b>SMART NOTIFICATIONS &amp; TEXTING</b>	Receive emails, texts and alerts on your watch when paired with your iPhone® and Android™ smartphone. With an Android phone, respond to texts with the on-watch keyboard, and view photos sent to you directly from your watch's screen.
<b>NEW</b>	<b>MEDITATION</b>	Help reduce stress, anxiety and more with guided meditation practices.



# VIVOACTIVE® 5

## HEALTH AND FITNESS GPS SMARTWATCH

**NEW PRODUCT ANNOUNCEMENT**

### PRODUCT COMPARISON:



	Venu® 3	vivoactive 5	vivoactive® 4
<b>Wellness Features</b>			
Body Battery energy monitoring <sup>2</sup>	•	•	•
Body Battery personalized insights <sup>2</sup>	•	•	•
Pulse Ox sensor <sup>1</sup>	•	•	•
Wrist-based heart rate <sup>2</sup>	•	•	•
Jet lag advisor	•	•	•
Women's health tracking	•	•	•
All-day stress tracking	•	•	•
Sleep score	•	•	•
Sleep coach/nap detection <sup>2</sup>	•	•	•
HRV status	•	•	•
Meditation	•	•	•
<b>Fitness Features</b>			
Garmin Coach	•	•	•
VO2 max <sup>3</sup>	•	•	•
HIIT sports app and workouts	•	•	•
On-screen workout animations	•	•	•
Workout benefit	•	•	•
Recovery time	•	•	•
Sports apps	+30	+30	+20
Wheelchair mode	•	•	•
Floors climbed	•	•	•
<b>Safety and Tracking</b>			
Incident detection <sup>4</sup>	•	•	•
Assistance <sup>4</sup>	•	•	•
<b>Connected Features</b>			
Phone calls	When connected to smartphone	•	•
Text responses via voice	When connected to smartphone	•	•
Text responses via keyboard	When connected to smartphone; Android only	When connected to smartphone; Android only	•
Viewable text photos	When connected to smartphone; Android only	When connected to smartphone; Android only	•
Music storage	•	•	•
Garmin Pay contactless payments	•	•	•
<b>Specs/Hardware</b>			
Bezel material	Stainless steel	Aluminum	Stainless steel
Heart rate sensor	Gen 5	Gen 4	Gen 3
Large font size option	•	•	•
Display type	AMOLED	AMOLED	MIP
Battery life – smartwatch mode	Venu 3: up to 14 days Venu® 3S: up to 10 days	Up to 11 days	vivoactive 4: up to 8 days vivoactive® 4S: up to 7 days
Battery life – with GPS mode	Venu 3: up to 26 hours Venu 3S: up to 21 hours	Up to 21 hours	vivoactive 4: up to 18 hours vivoactive 4S: up to 15 hours



# VÍVOACTIVE® 5

## HEALTH AND FITNESS GPS SMARTWATCH

**NEW PRODUCT ANNOUNCEMENT**

**PRODUCT CONFIGURATIONS:**

SCHEDULE B: 8517620050  
HTS: 8517.62.0090



AVAILABLE	INCLUDES	COUNTRY OF ORIGIN		
Now	vívofitness 5, charging/data cable, documentation	Made in Taiwan. Cable made in Taiwan, Myanmar or China.		
DESCRIPTION	SKU	UPC	MRP (USD)	MRP (CAD)
Slate Aluminum Bezel with Black Case and Silicone Band	010-02862-10	753759324902	\$299.99	\$399.99



AVAILABLE	INCLUDES	COUNTRY OF ORIGIN		
Now	vívofitness 5, charging/data cable, documentation	Made in Taiwan. Cable made in Taiwan, Myanmar or China.		
DESCRIPTION	SKU	UPC	MRP (USD)	MRP (CAD)
Cream Gold Aluminum Bezel with Ivory Case and Silicone Band	010-02862-11	753759324919	\$299.99	\$399.99



AVAILABLE	INCLUDES	COUNTRY OF ORIGIN		
Now	vívofitness 5, charging/data cable, documentation	Made in Taiwan. Cable made in Taiwan, Myanmar or China.		
DESCRIPTION	SKU	UPC	MRP (USD)	MRP (CAD)
Metallic Navy Aluminum Bezel with Navy Case and Silicone Band	010-02862-12	753759324926	\$299.99	\$399.99



AVAILABLE	INCLUDES	COUNTRY OF ORIGIN		
Now	vívofitness 5, charging/data cable, documentation	Made in Taiwan. Cable made in Taiwan, Myanmar or China.		
DESCRIPTION	SKU	UPC	MRP (USD)	MRP (CAD)
Metallic Orchid Aluminum Bezel with Orchid Case and Silicone Band	010-02862-13	753759324933	\$299.99	\$399.99

# VIVOACTIVE® 5

## HEALTH AND FITNESS GPS SMARTWATCH

**NEW PRODUCT ANNOUNCEMENT**

### PHYSICAL SPECIFICATIONS:

<b>Unit dimensions (WxHxD):</b>	1.7" x 1.7" x 0.43" (42.2 x 42.2 x 11.1 mm)	<b>Lens material:</b>	Corning® Gorilla® Glass 3
<b>Display size:</b>	1.2" (30.4 mm)	<b>Water rating:</b>	Swim, <a href="#">5 ATM</a>
<b>Display resolution (WxH):</b>	390 x 390 pixels	<b>Battery life:</b>	Up to 11 days (smartwatch mode)
<b>Display type:</b>	AMOLED	<b>Bands:</b>	Quick release 20 mm interchangeable
<b>Color display:</b>	Yes	<b>Band size:</b>	Fits wrists with a circumference of 125–190 mm
<b>Weight:</b>	0.8 oz (23g) 1.3 oz (36g) with band	<b>Accessory band size (sold separately):</b>	20 mm: 125–218 mm

### PACKAGING SPECIFICATIONS:



	vivoactive 5
<b>Gift box dimensions (WxHxD):</b>	3.6" x 4.4" x 2.8" (68 x 137 x 68 mm)
<b>Gift box weight:</b>	5.0 oz (142 g)
<b>Master carton dimensions (WxHxD):</b>	14.6 x 11.6" x 11.8" (37.1 x 29.5 x 30.0 cm)
<b>Master carton weight:</b>	16.6 lbs (7.5 kg)
<b>Master carton quantity:</b>	40

**PRODUCT COPY:** Product copy for vivoactive 5 can be downloaded from the [Dealer Resource Center](#).

### COMPATIBLE ACCESSORIES

	DESCRIPTION	SKU	UPC	MSRP (USD)	FITS WRIST	
<b>NEW</b>	Black Silicone, 20 mm	010-12932-30	753759324940	\$39.99	125–218 mm	
<b>NEW</b>	Ivory Silicone, 20 mm	010-12932-31	753759324957	\$39.99	125–218 mm	
<b>NEW</b>	Navy Silicone, 20 mm	010-12932-32	753759324964	\$39.99	125–218 mm	
<b>NEW</b>	Orchid Silicone, 20 mm	010-12932-33	753759324971	\$39.99	125–218 mm	
<b>NEW</b>	Ultrafit Nylon Band, 20 mm	010-13261-10	753759303396	\$39.99	115–220 mm	

	DESCRIPTION	SKU	UPC	MSRP (USD)	
	USB-C cable	010-13278-00	753759306014	\$24.99	
	USB-A cable	010-12491-01	753759176860	\$24.99	

For additional bands and compatible accessories, please visit [Garmin.com](#).

# VIVOACTIVE® 5

## HEALTH AND FITNESS GPS SMARTWATCH

**NEW PRODUCT ANNOUNCEMENT**

### MERCHANDISING:

#### DUMMY UNITS

SKU: 010-M2862-10



SKU: 010-M2862-11



SKU: 010-M2862-12



SKU: 010-M2862-13



#### ACRYLIC PEDESTAL



This display is designed for small, narrow spaces and should be used inside a glass case. When featuring multiple products, pedestals may be merchandised side by side. Use with a dummy unit and small product card, both ordered separately.

Size: 2.875" W x 2.875" D x 0.709" H  
SKU: M00-10769-00

#### TRAY KIT SYSTEM



This display is great for small spaces and should be used inside a glass case. It displays up to two Garmin dummy units on each tray kit. For larger product assortments, tray kits may be merchandised side by side. Use with dummy units, small product cards, common features product cards, brackets, graphic back panels and trays, all ordered separately.



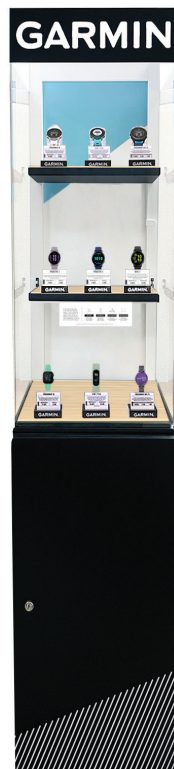
This is one panel with artwork shown on both sides.

Size: 7" W x 9" H  
SKU: M00-00941-00



**SMALL TRAY**  
Size: 7" W x 6" D  
SKU: M00-00527-00

#### NEW ACRYLIC NONPOWERED FREESTANDING DISPLAY WITH WHEELS



This display ships as one full piece with wheels, is nonpowered, great for small narrow spaces and includes a lock and key. These displays are fully customizable and fit a variety of Garmin products. Displays up to 12 Garmin dummy units. Use with dummy units, small product cards, common features product cards, brackets and acrylic pedestals, all ordered separately.

Contact your inside sales rep or order administration representative to place an order for the display if you meet the order requirements.

SKU: M00-00982-00  
Size: 16" W x 15" D x 68.5" H (approximately)  
Delivered by FedEx Freight  
Weight on pallet: 150 lbs (approximately)  
Dimensions on pallet: 48" W x 40" D x 80" H (approximately)

**BLUE WEDGE MAGNETIC GRAPHIC**  
SKU: M00-00909-00  
Size: 14.35" W x 16" H

# VÍVOACTIVE® 5

## HEALTH AND FITNESS GPS SMARTWATCH

**NEW PRODUCT ANNOUNCEMENT**

### MERCHANDISING CONTINUED:

INTERCHANGEABLE MERCHANDISING COMPONENTS THAT CAN BE USED ON THE PEDESTALS, TRAY KITS AND THE ACRYLIC NONPOWERED FREESTANDING DISPLAY:

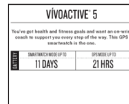
#### SMARTWATCH

SKU: M00-10751-00  
Size: 1.5" W x 4.0" H



#### VÍVOACTIVE 5 SMALL PRODUCT

SKU: M00-00983-00  
Size: 2" H x 2.5" W



#### TRAY KIT/ACRYLIC DISPLAY COMMON FEATURES PRODUCT CARD – SMARTWATCH

SKU: M00-00977-00      Size: 6.75" L x 4.0" H



### NEW! GARMIN BRANDED FREESTANDING/COUNTERTOP LIGHT BOX DISPLAYS

Showcase a wide range of Garmin products with these new displays featuring a bright light box graphic. They can be customized by ordering dummy units, brackets, product cards, common features product cards and light box graphics. You can feature up to 7 dummy units on the freestanding display and up to 3 dummy units on the countertop display.

Contact your inside sales rep or order administration representative to place an order for the components or full display if you meet the order requirements.

Freestanding Light Box Display: 24" W x 62.98" T x 23.166" D  
Countertop Light Box Display: 12" W x 18.08" T x 14" D



### EXISTING GARMIN BRANDED GRAY FREESTANDING/COUNTERTOP VIDEO DISPLAYS

Order these components to update your existing freestanding or countertop display: dummy units, brackets, SD™ card, product card and graphics. Contact your inside sales rep or order administration representative to place an order for the update components.



Final artwork is subject to change from images shown in the merchandising section. For more information on merchandising, please visit the Dealer Resource Center at [Garmin.com](http://Garmin.com).

<sup>1</sup>This is not a medical device and is not intended for use in the diagnosis or monitoring of any medical condition; see [Garmin.com/ataccuracy](http://Garmin.com/ataccuracy). Pulse Ox not available in all countries.

<sup>2</sup>Activity tracking accuracy

<sup>3</sup>Unavailable in wheelchair mode

<sup>4</sup>When paired with your compatible smartphone; see [Garmin.com/ble](http://Garmin.com/ble). For safety and tracking feature requirements and limitations, see [Garmin.com/safety](http://Garmin.com/safety). Incident detection is unavailable when the watch is in wheelchair mode.

Apple is a trademark of Apple Inc., registered in the U.S. and other countries. Android is a trademark of Google LLC. Corning and Gorilla are registered trademarks of Corning Incorporated.

Please note: The ECCNs and Classification numbers provided represent the opinion of Garmin International, Inc. of the proper classifications for the products today (based on the original software and/or original hardware). Classifications are subject to change. Under the U.S. export regulations, the U.S. Government assigns your organization or client, as exporter/importer of record, the responsibility for determining the correct classification of any item at the time of export/import. Depending on the products, the customer, or the country of destination, an export license may be required by the Department of Commerce prior to shipment. The Department of Commerce's Bureau of Industry and Security (former Bureau of Export Administration) website (<http://www.bis.doc.gov>) provides information that might be useful to you in determining whether you need to obtain a license for a particular shipment. To be clear, if an item described above does require a validated export license, it would be the exporter's responsibility to obtain this license prior to exportation.