





Portable Bluetooth® Party
Speaker with Multi-Color
Disco Lights
EDS-1200



Instruction Manual

Please read carefully before use and keep for future reference

WARNING

	CAUTION WARNING: SHOCK HAZARD, DO NOT OPEN. AVIS: RISQUE DE CHOC ELECTRIQUE. NE PAS OUVRIR	
CAUTION: TO REDUCE THE RISK OF FIRE AND ELECTRIC SHOCK, DO NOT REMOVE THE COVER (OR BACK) OF THE UNIT. REFER SERVICING ONLY TO QUALIFIED SERVICE PERSONNEL.		



The lightning flash with arrowhead symbol within an equilateral triangle is intended to alert the user to the presence of uninsulated "dangerous voltage" within the product's enclosure that may be of significant magnitude to constitute risk of electric shock.



The exclamation point within an equilateral triangle is intended to alert the user to the presence of important operation and servicing instructions in the literature accompanying the appliance.

IMPORTANT SAFETY INSTRUCTIONS

1. Read these instructions.
2. Guard this manual.
3. Obey all alerts.
4. Follow all instructions.
5. **WARNING:** To prevent fire or shock hazard, do not expose this equipment to rain or moisture. Do not store and operate this product near liquid.
6. Clean only with dry cloth.
7. Not store and not operate this product near any heat sources such as radiators and heat registers, stove or other appliances (including amplifiers) that produce heat. Keep this product in a well ventilated place.
8. Not ignore the safety purpose of the polarized or grounding plug. A polarized plug has two blades being wider than the other. A grounding plug has two blades plus a round pin to ground. The wide blade or the third prong is intended to provide security. If the provided plug does not fit into your outlet, consult an electrician to replace the outlet.
9. Protect all wires connected to this unit from being walked on or pinched, particularly at plugs and the point where the cord exits the unit. When unplugging from the electrical outlet, grasp the plug and do not pull the cord.
10. Disconnect the unit during lightning storms or when long period is to remain unused.
11. Keep this unit off when connecting all the devices connected to it.
12. After finishing the installation and connections, connect all your equipment with low volume level. Once all devices are connected, slowly increase the volume or level controls to achieve the proper position.
13. Before placement, installation, assembly or suspending any product, inspect all equipment, suspension, cabinets, transducers, brackets and associated equipment. Any missing component, corroded, deformed, or with non-nominal load can reduce the intensity, placement and arrangement of the installation significantly. Any of these conditions can reduce the security of the facility and must be corrected immediately. Use only suitable equipment for the loading conditions of the installation and that any possibility of reducing term, unexpected overload, never exceed the capacity of the material or equipment.
14. Consult a licensed professional to install the equipment and make sure that all local, regional and national regulations related to security are understood and adhered to.
15. All services should be performed by qualified professionals. Servicing is required when the apparatus has been damaged in any way, as if having the power cord or its damaged connector, or if the machine breaks contact with liquid or if any object is inserted in the unit or if the unit is exposed to rain or moisture, or if the unit does not operate normally, or has been dropped.

CHARGE THE BATTERY FULLY BEFORE FIRST USE TO OPTIMIZE ITS LIFETIME PERFORMANCE.

IN THE BOX

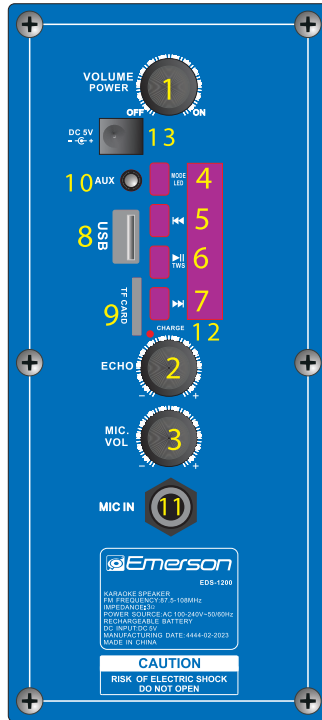
Upon opening your new portable Bluetooth® speaker, first check to ensure all of the following contents are present:

- Portable Bluetooth® Speaker
- Remote Control
- Adapter
- Wired Microphone
- User Manual

KEY FEATURES

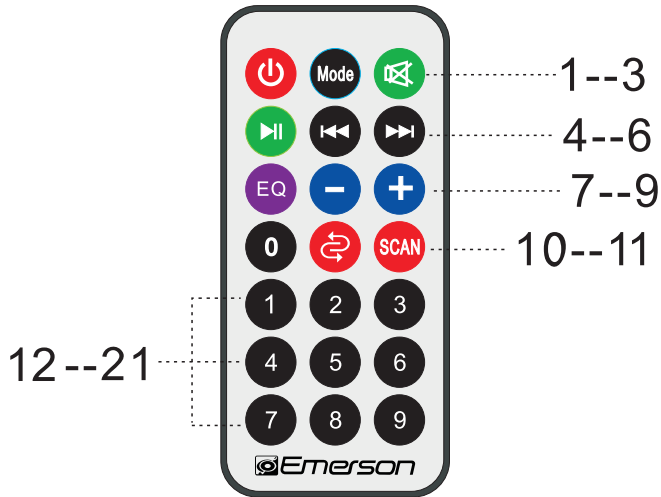
- 12" Full-frequency speakers pump out room-filling, high-quality audio with ease.
- Bluetooth® functionality allows you to wirelessly stream all your favorite music content from Bluetooth-enabled devices in high-quality audio
- Connect to other EMERSON-EDS-1200 True Wireless Speakers (TWS) allowing you to sync speakers up to 33 Feet from each other without any wires.
- Start the party off right with the Disco Light
- User-Friendly operator experience thanks to the clear LED display
- Enjoy media from removable storage devices, such as USB flash drives and TF cards via the USB input and TF card slot
- Manually connect to external media devices via the 3.5mm auxiliary input
- Tune in on all your favorite local radio stations thanks to the FM tuner
- Take full control of your speaker thanks to the included 3 master control knobs
- Built-in handle allow you to move the speaker anywhere easily
- Accessories included: Remote Control, User Manual, Wired Microphone & Adapter

BACK PANEL



1. Master volume Knob: Adjust from Min to Max (Power Switch: ON/OFF)
2. Echo of Microphone Adjustment: Adjust from Min to Max
3. Microphone Volume Knob: Adjust from Min to Max
4. Mode Button: Toggle between AUX, USB, TF, FM, BT by short press, press and hold to turn light on or off
5. Previous Track Button: Select previous track
6. Play/Pause Button(TWS connection)
7. Next Track Button: Select next track
8. USB Slot
9. TF Card Slot
10. AUX IN
11. Microphone Input
12. Battery Indicator Light
13. Power Supply: DC 5V

REMOTE CONTROL



1. STANDBY: Make the unit to be standby mode
2. Input Mode Button: Toggle between USB, TF, FM, AUX, BT
3. Mute: Mute the track
4. PLAY/PAUSE
5. Previous Track: Select previous channel
6. Next Track: Select next channel
7. EQ: Select EQ mode
8. VOL-: Reduce the master volume
9. VOL+: Increase the master volume
10. REP: Repeat the playing track
11. Press to Scan Channel in FM Mode
12. 0-9 Number Pad: Choose Song Number
Directly for USB flash drive or TF card

PAIRING A BLUETOOTH® DEVICE

Use Bluetooth® mode to stream music from a Bluetooth® enabled player (e.g., smartphone or tablet device). A device must be paired with the unit before using them together for the first time.

To pair a Bluetooth® enabled device with the Speaker, follow these steps:

1. Make sure Bluetooth® is enabled on your device and that it is next to the unit before attempting to pair it.
2. Turn on the Speaker. On the back panel, press the mode button to enter Bluetooth mode.
3. Use your device to search for nearby Bluetooth devices. The Speaker will be listed as "EMERSON-EDS-1200". (This function is usually in the Bluetooth® settings menu; refer to your device's instruction manual to learn more.)
4. Select "EMERSON-EDS-1200" from the list of found/available devices.
The Speaker will make a confirmation tone upon successful connection

You can now start playback on your connected device to begin streaming music to the speaker. Use your Bluetooth device to select songs, Play/Pause music feedback, and adjust the speaker volume.

TWS FUNCTION

1. Turn on the identical speakers you intend to use (Please note they must be the same pairing name). Switch both speakers to BT mode.
2. At the first time, please press the Play/Pause (TWS) button of one of unit for 3 seconds. Then two speakers will connect together.
3. Connect the phone: Open the phone Bluetooth settings, Search and Connect the main device Bluetooth Name 'EMERSON-EDS-1200'.
4. Select music from phone and enjoy TWS playing in pairs with two Speakers.
5. Exit TWS: Press and hold the Play/Pause (TWS) button for 3 seconds to exit the TWS function

NOTE: TWS functionality is for two speakers at a time only. It can not support more than two speakers at the same time.

USB/TF CARD

The Bluetooth® speaker allows you to enjoy your favorite audio played from external storage devices, such as USB flash drives and TF memory cards. To use do so, follow these steps:

1. Turn the speaker ON.
2. Insert the USB flash drive or TF Card and the stored music will begin playing automatically.
3. While in playing mode, press the Previous or Next button to select songs, and the Play/Pause button to play or pause playback.
4. Please turn the speaker OFF while not in use.

NOTE: When a USB flash drive / TF card is inserted into the USB / TF card input, the unit will automatically switch to USB / TF mode and begin playing Mp3 audio files from the USB flash drive / TF card.

FM RADIO

The Bluetooth® speaker allows you to enjoy your favorite local FM radio stations. To use do so, follow these steps:

1. Press the MODE button to change to FM radio mode.
2. Press the “Play/Pause” button to automatically search for available FM channels.
3. Once the scan is complete, you can use the ◀◀ or ▶▶ button to search the previous or next channels.

AUX INPUT

The Bluetooth® speaker allows you to enjoy your favorite audio played from external devices that don't have Bluetooth® capabilities via the auxiliary input. To use do so, follow these steps:

1. Press the MODE button to change to AUX mode.
2. Insert an auxiliary audio cable (not included) into the AUX input on the speaker.
3. Plug the other end of the audio cable into the desired external media device's AUX input.
4. Press the "Play/Pause" button to start or stop playback.

NOTE: You can enter AUX mode by pressing the "MODE" button to cycle through modes.

CHARGING

To charge the speaker, follow the steps below:

1. Turn off the speaker and connect the provided Adapter via the DC 5V charge port.
2. Ensure the red charging indicator light comes on.
3. Charge the speaker until full (3 - 5 hours). When battery is full, the indicator light will turn off.

NOTE: In order to prolong battery life, please do not charge for more than 8 hours. The built-in rechargeable battery is not replaceable, do not remove or replace it. Do not throw battery into trash or fire. Play time will vary based on usage; heavy, loud, bass music will use more energy.

TROUBLESHOOTING

Fault	Possible Cause	Solution
No sound	<ol style="list-style-type: none"> 1. The woofer cable may loose 2. Volume is too low. 	<ol style="list-style-type: none"> 1. Re-connect the woofer cable 2. Adjust volume.
Distortion of sound	<ol style="list-style-type: none"> 1. Volume too high. 2. Speaker may be damaged. 	<ol style="list-style-type: none"> 1. Turn down the volume. 2. If speaker is damaged, repair or replace it.
Karaoke does not work	<ol style="list-style-type: none"> 1. Microphone plug is not fully inserted. 2. Microphone switch is not on. 3. Microphone volume knob is at the lowest position. 	<ol style="list-style-type: none"> 1. Plug microphone properly into the socket. 2. Turn on microphone switch. 3. Adjust microphone volume properly.
MP3 does not play	<ol style="list-style-type: none"> 1. The song format in the U disc is incorrect. 2. Improper operation has caused a process disorder. 3. USB disc is disconnected. 	<ol style="list-style-type: none"> 1. Transform song format into Mp3 format. 2. Reboot the machine. 3. Insert USB disc properly.

SPECIFICATIONS

Speaker	12"
Wireless Source	Bluetooth®
Feature Function	TWS
Display	LED
Media Inputs	USB Port, TF Card Slot
PMPO Output	4000W
Audio Format Support	MP3
Other Inputs	MIC, AUX
Radio Tuner	FM
Light Effects	Multi-Color Disco Lights
Level Controls	Master Volume, Mic Volume, Echo Volume
Power Source	3.7V, 1800mAh Rechargeable Battery
Battery Type	Built-In Lithium, Rechargeable
Play Time	Up to 2 Hours (Varies depending on volume level and type of music played)
Accessories Included	Remote Control, User Manual, Wired Microphone & Adapter

FCC NOTICE

This device complies with Part 15 of the FCC Rules. Operation is subject to the following two conditions: (1) this device may not cause harmful interference, and (2) this device must accept any interference received, including that may cause undesired operation.

NOTE: This equipment has been tested and found to comply with the limits for a Class B digital device, pursuant to Part 15 of the FCC Rules. These limits are designed to provide reasonable protection against harmful interference in a residential installation. This equipment generates, uses and can radiate radio frequency energy and, if not installed and used in accordance with the instructions, may cause harmful interference to radio communications. However, there is no guarantee that interference will not occur in a particular installation. If this equipment does cause harmful interference to radio or television reception, which can be determined by turning the equipment off and on, the user is encouraged to try to correct the interference by one or more of the following measures:

- Reorient or relocate the receiving antenna.
- Increase the separation between the equipment and receiver.
- Connect the equipment into an outlet on a circuit different from that to which the receiver is connected.
- Consult the dealer or an experienced radio/TV technician for help.

CAUTION ON MODIFICATIONS

Any changes or modifications not expressly approved by the grantee of this device may void the authority granted by the FCC to operate the equipment.

SUPPORT

If you have problems with your device, please consult the instructions in this manual. Please also visit us on the web at www.emersonaudio.com to get up-to-the-minute news, alerts, and documentation for your device. For additional assistance, please contact Naxa Technical Support.

Naxa Technical Support

2320 East 49th St.

Vernon, CA 90058

(866) 411-6292

<http://www.naxa.com/supportcenter/>