



## Quick start guide

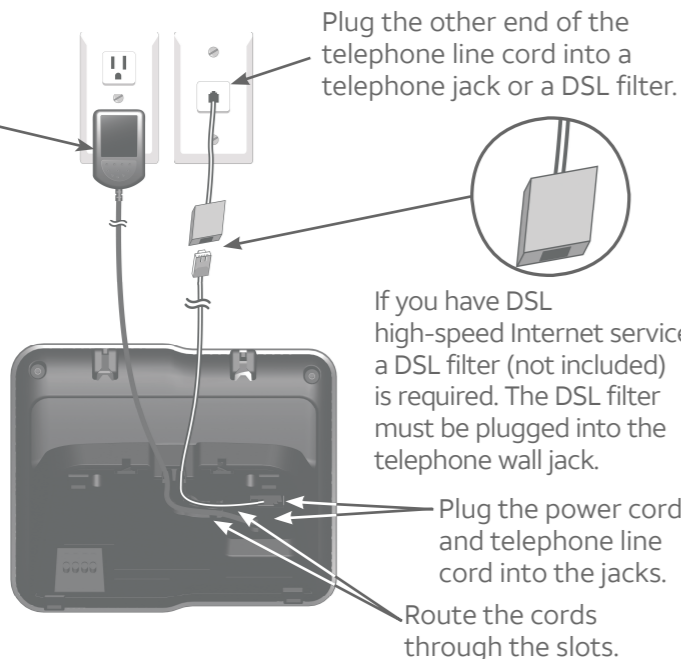
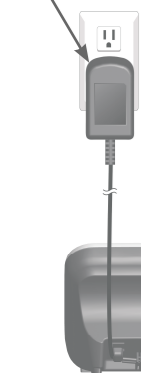
CRL32102/CRL32202/CRL32302/CRL32352/CRL32452

**This quick start guide provides you with basic instructions only. For more complete instructions, refer to your Abridged user's manual provided in the package, or see the online Complete user's manual at [www.telephones.att.com/manuals](http://www.telephones.att.com/manuals).**

### Telephone base installation

#### Charger installation

Plug the power adapter into an electrical outlet not controlled by a wall switch.



Plug the other end of the telephone line cord into a telephone jack or a DSL filter.

If you have DSL high-speed Internet service, a DSL filter (not included) is required. The DSL filter must be plugged into the telephone wall jack.

Plug the power cord and telephone line cord into the jacks.

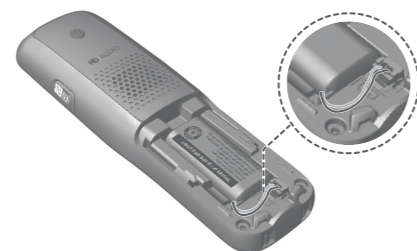
Route the cords through the slots.

**Caution:** Use only the power adapter(s) provided with this product. To obtain a replacement, visit our website at [www.telephones.att.com](http://www.telephones.att.com) or call **1 (800) 222-3111**. In Canada, dial **1 (866) 288-4268**.

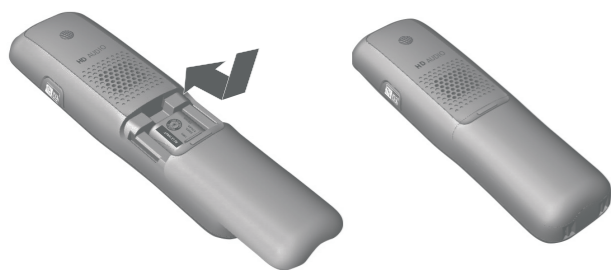
### Battery installation

Install the battery, as shown below. Charge your handset(s) before initial use. The battery is fully charged after 10 hours of continuous charging.

1. Plug the battery connector securely into the socket inside the handset battery compartment. Insert the supplied battery with the label **THIS SIDE UP** facing up, as indicated.



2. Align the cover flat against the battery compartment, then slide it upwards until it clicks into place.



3. Charge the handset by placing it face forward in the telephone base or charger.



**Caution:** Use only the supplied rechargeable battery or replacement battery (model BT183342/BT183342).

## Quick reference guide

### ▼CID/VOLUME

- Show caller ID log.
- Scroll down in menus.
- Move cursor to the left when entering names or numbers.
- Decrease listening volume when on a call, or decrease message playback volume.

### REDIAL/PAUSE

- Press repeatedly to view the last 10 numbers dialed.
- Press and hold to insert a dialing pause while entering numbers.

### PHONE/FLASH

- Make or answer a call.
- Answer a call waiting call during a call.

### 1

- Press repeatedly to add or remove 1 in front of the call log entry before dialing or saving it to the directory.
- Press and hold to set or dial your voicemail number.

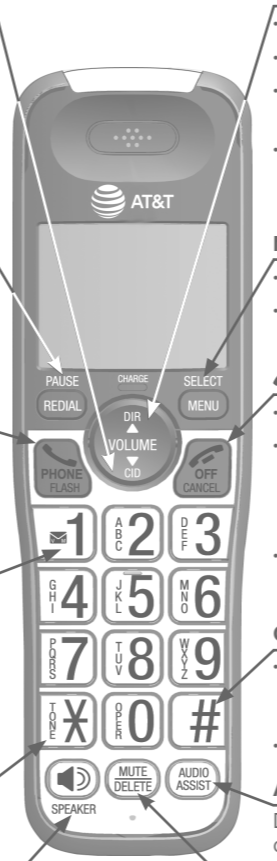
### TONE\*

Press to switch to tone dialing temporarily during a call if you have pulse service.

### ☎/SPEAKER

Switch between the speakerphone and handset.

### Handset



### ▲DIR/VOLUME

- Show directory entries.
- Scroll up in menus.
- Move cursor to the right when entering names or numbers.
- Increase listening volume when on a call, or increase message playback volume.

### MENU/SELECT

- Show the menu.
- Select an item or save an entry or setting while in the menu.

### OFF/CANCEL

- Hang up a call.
- Press to cancel an operation, back up to the previous menu, or exit the menu display; or press and hold to return to idle mode
- Press and hold in idle mode to erase missed call indicator.

### QUIET # (pound key)

- Press repeatedly to display other dialing options when reviewing a caller ID log entry.
- Press and hold to set quiet mode.

### AUDIO ASSIST®

During a call, press to enhance the clarity and loudness of your caller's voice.

### MUTE/DELETE

- Mute the microphone during a call.
- Delete the displayed entry while in the directory, call log or redial list.
- Delete digits or characters when using the dialing keys.

### Handset side view



### EQ

Change the audio quality to best suit your hearing.

### Telephone base

### Message counter

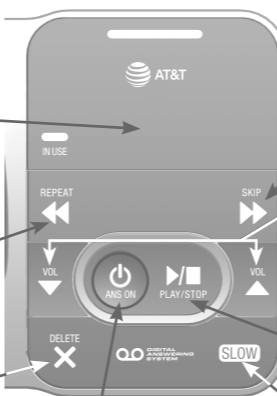
Shows the number of messages or other answering system information.

### ◀/REPEAT

- Repeat a message.
- Press twice to play the previous message.

### X/DELETE

- Delete the message currently playing.
- Press twice to delete all old messages when in idle mode.



### ▶/SKIP

Skip to the next message.

### ▼/VOL/▲

- Adjust the listening volume during message playback.
- Adjust the base ringer volume when in idle mode.

### ▶/PLAY/STOP

Start or stop message playback.

### ⏻/ANS ON

Turn the built-in answering system on or off.

### SLOW

Press to reduce the playback speed.

## Initial settings

**We recommend you program your telephone system before use.** The following are a few examples of common features to set before using the telephone. Refer to the **Handset settings** and **Answering system settings** in the Abridged user's manual or the online Complete user's manual for detailed instructions on setting all telephone features.

### Set date/time

Set the date/time before using the answering system.

1. **MENU** -> ▼ or ▲ -> **Set date/time** -> **SELECT**.
2. Enter the month, day and year using the dialing keys -> **SELECT**.
3. Enter the hour and minute using the dialing keys.
4. ▼ or ▲ to choose **AM** or **PM** -> **SELECT**.

### Record your own announcement

Your outgoing announcement plays when calls are answered by the answering system. You can use the preset announcement to answer calls, or replace it with your own recorded announcement.

1. **MENU** -> ▼ or ▲ -> **Answering sys** -> **SELECT**.
2. **SELECT** to select **Announcement**.
3. **SELECT** to select **Record ann.**
4. Facing the handset, record your announcement and press **5** to end recording.

### Number of rings

You can set the answering system to answer an incoming call after two, three, four, five or six rings, or toll saver. If you choose toll saver, the answering system answers a call after two rings when you have new messages, or after four rings when there are no new messages. This enables you to check for new messages and avoid paying unnecessary long distance charges if you are calling from out of your local area.

If you want the built-in answering system instead of the voicemail to answer a call, you should set the answering system to answer a call at least two rings before the voicemail is set to answer. Contact your telephone service provider for information on your voicemail settings.

1. **MENU** -> ▼ or ▲ -> **Answering sys** -> **SELECT**.
2. ▼ or ▲ -> **Ans sys setup** -> **SELECT**.
3. ▼ or ▲ -> **# of rings** -> **SELECT**.
4. ▼ or ▲ -> choose among **2, 3, 4, 5, 6** or **Toll saver** -> **SELECT**.

### Handset ringer volume

You can set the ringer volume level to one of the six levels or turn the ringer off.

1. **MENU** -> ▼ or ▲ -> **Ringers** -> **SELECT**.
2. **SELECT** to select **Ringer volume**.
3. ▼ or ▲ to choose the desired level -> **SELECT**.

### Reset language to English

If you have accidentally changed the screen display language and want to switch it back to English, follow the step.

- **MENU** in idle mode-> enter **364#**.

## Telephone operation

Operation	Steps
Making a call	Press <b>\PHONE</b> or <b>☎/SPEAKER</b> -> Enter the telephone number.
On-hook dialing (predialing)	Enter the telephone number -> Press <b>\PHONE</b> or <b>☎/SPEAKER</b> to call.
Answering a call	Press <b>\PHONE</b> or <b>☎/SPEAKER</b> , or press any dialing keys ( <b>0-9</b> , <b>TONE</b> or <b>#</b> ).
Ending a call	Press <b>OFF</b> or return the handset to the telephone base or charger.
Speakerphone	During a call, press <b>☎/SPEAKER</b> to switch between handsfree speakerphone and normal handset use.
Redial	Press <b>REDIAL</b> repeatedly to select the desired entry -> <b>\PHONE</b> or <b>☎/SPEAKER</b> to call.
Volume control	Press <b>VOLUME</b> ▼ to decrease or press <b>VOLUME</b> ▲ to increase the listening volume during a call.
Call waiting (Requires subscription from telephone service provider)	Press <b>\FLASH</b> to put current call on hold and to take the new call; press again to switch back and forth between calls.

## Caller ID

This product supports caller ID services offered by most telephone service providers. The telephone stores caller ID information for the last 50 incoming calls in the telephone base. This information is common to all handsets.

Missed call indicator	
When a handset is in idle mode and has new or missed calls, its screen shows <b>XX Missed calls</b> .	
You can erase the missed call indicator either by reviewing the call log one by one, or by <u>pressing and holding</u> <b>CANCEL</b> on the handset in idle mode.	
Review and dial a number in the call log	
1. <b>CID</b> in idle mode -> ▼ or ▲ to scroll through the list. 2. <b>\PHONE</b> or <b>☎/SPEAKER</b> to call when the desired entry is displayed.	
Caller ID announce	
When this feature is on and you have an incoming call, the handset and/or base speaks "Call from..." and the name of the caller based on the directory or caller ID information. You can turn this feature on or off for the base or each individual handset, or both.	
1. <b>MENU</b> -> ▼ or ▲ -> <b>Settings</b> -> <b>SELECT</b> . 2. ▼ or ▲ -> <b>Caller ID annnc</b> -> <b>SELECT</b> . 3. ▼ or ▲ to choose <b>Set all On/Off, Local handset</b> , or <b>Base</b> -> <b>SELECT</b> . 4. ▼ or ▲ to choose <b>On</b> or <b>Off</b> -> <b>SELECT</b> .	

## Directory

The directory can store up to 50 entries, which are shared by all system handsets.

Operation	Steps
Adding an entry	1. <b>MENU</b> . 2. ▼ or ▲ -> <b>Directory</b> -> <b>SELECT</b> . 3. ▼ or ▲ -> <b>Add contact</b> -> <b>SELECT</b> . 4. Enter a telephone number up to 30 digits -> <b>SELECT</b> . 5. Enter a name up to 15 characters -> <b>SELECT</b> .
Searching/dialing an entry	1. <b>DIR</b> in idle mode. 2. Press ▼ or ▲ to browse through the directory, or press the dialing keys ( <b>0-9</b> ) to start a name search. 3. Press <b>\PHONE</b> or <b>☎/SPEAKER</b> to call.

## Answering system

About answering system and voicemail		
Your telephone has separate indicators for two different types of voice messages: those left on the built-in answering system and those left at your telephone service provider's voicemail. To listen to messages recorded on the built-in answering system, refer to the <b>Message playback</b> section; to listen to voicemail, contact your telephone service provider for more information.		
Turn answering system on/off		
The answering system must be turned on to answer and record messages. Press <b>ANS ON</b> on the telephone base to turn the built-in answering system on or off. When it is turned on, the <b>ANS ON</b> light on the telephone base turns on and <b>ANS ON</b> displays on the handset.		
Message alert tone		
When this feature is on, and there is at least one new message, the telephone base beeps every 10 seconds.		
1. <b>MENU</b> -> ▼ or ▲ -> <b>Answering sys</b> -> <b>SELECT</b> . 2. ▼ or ▲ -> <b>Ans sys setup</b> -> <b>SELECT</b> . 3. ▼ or ▲ -> <b>Msg alert tone</b> -> <b>SELECT</b> . 4. ▼ or ▲ -> <b>On</b> or <b>Off</b> -> <b>SELECT</b> .		
Call screening		
Use this feature to choose whether incoming messages can be heard over the telephone base speaker when they are being recorded. If you turn call screening on, you hear the incoming message. While monitoring an incoming message, you can answer the call by pressing <b>\PHONE</b> on the handset.		
1. <b>MENU</b> -> ▼ or ▲ -> <b>Answering sys</b> -> <b>SELECT</b> . 2. ▼ or ▲ -> <b>Ans sys setup</b> -> <b>SELECT</b> . 3. <b>SELECT</b> to select <b>Call screening</b> . 4. ▼ or ▲ -> choose <b>On</b> or <b>Off</b> -> <b>SELECT</b> .		
Message playback		
<b>Using the telephone base:</b> Press <b>PLAY</b> when the telephone base is in idle mode.		
<b>Using a handset:</b> Press <b>MENU</b> twice when the handset is in idle mode.		
Options during playback		
Feature	On the telephone base	On a handset
Adjust playback volume	Press <b>▼/VOL/▲</b>	Press <b>▼VOLUME</b> or <b>▲VOLUME</b>
Stop playback	Press <b>STOP</b>	Press <b>5</b>
Skip to the next message	Press <b>SKIP</b>	Press <b>6</b>
Repeat the message	Press <b>REPEAT</b>	Press <b>4</b>
Play the previous message	Press <b>REPEAT</b> twice	Press <b>4</b> twice
Slow down the message	Press <b>(SLOW)</b>	
Delete the message	Press <b>X/DELETE</b>	Press <b>DELETE</b>

For more detailed instructions, please refer to the Abridged user's manual provided in your package, or for a full set of installation and operation instructions, refer to the online **CRL32102/CRL32202/CRL32302/CRL32352/CRL32452 DECT 6.0 cordless telephone/answering system with caller ID/call waiting** Complete user's manual at **www.telephones.att.com/manuals**.

For customer service or product information, visit our website at **www.telephones.att.com** or call **1 (800) 222-3111**. In Canada, dial **1 (866) 288-4268**.

Audio Assist® is a registered trademark of Advanced American Telephones.

© 2012-2019 Advanced American Telephones. All Rights Reserved.  
AT&T and the AT&T logo are trademarks of AT&T Intellectual Property licensed to Advanced American Telephones, San Antonio, TX 78219.  
Printed in China. Issue 6.0 AT&T 02/19.