

CLEARSTREAM ECLIPSE™

AMPLIFIED INDOOR HDTV ANTENNA

Designed and engineered in the USA using patented technology to receive TV signals **50 miles** away from broadcast towers.

Dedicated UHF and Hi-VHF multi-directional elements deliver range and reception in less-than-ideal locations; no aiming necessary.

The reversible black and white design can also be painted to blend into all kinds of spaces.

Includes 12 ft. of our detachable high-performance coaxial cable featuring knurled F-connectors, reinforced center conductor, and molded strain-relief for seamless connection.

The **new** Jolt Switch In-Line Amplifier gives you control when TV signals need a boost.



Proven Performance and Reliability

The Proof Is in the Loop. As perfectionists and antenna enthusiasts, innovation and quality are two of our highest priorities. This is why both our patented loop elements and lifetime warranty are unique in the industry and make us cord-cutters' favorite brand. ClearStream TV antennas are specifically engineered to receive the frequencies broadcast in North America and truly provide the best, most consistent reception of uncompressed over-the-air TV signals in HD - **straight from the networks.**

The ClearStream ECLIPSE Indoor HDTV antenna features the same powerful loop found in our industry-leading outdoor antennas. Perfect for compact spaces, you don't have to compromise presentation for quality. Receive a greater range of frequencies in dorm rooms, RVs, over-the-road vehicles, or small apartments, and enjoy free entertainment from networks like ABC, CBS, NBC, FOX, PBS, Univision, and more – in Full HD 1080 where available. The ClearStream ECLIPSE is multi-directional, features a discreet black/white double-sided design, and is paintable, so you can match any décor.

Better Boost, Better Signals

The new and improved Jolt Switch features a simple ON/OFF switch to bypass amplification when a TV channel doesn't need it. When it's ON, TV signals are increased for clearer picture and sound, sometimes receiving channels beyond your antenna's standard range. When it's OFF, amplification is bypassed while TV signals are still filtered from FM and cellular interference.



Back View



Side View

The ClearStream ECLIPSE™ Amplified comes with:

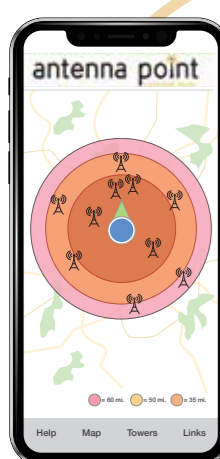
- ClearStream ECLIPSE Antenna
- 12 ft. Detachable High-Performance Coaxial Cable
- Jolt Switch 18dB In-Line Amplifier with Coaxial Cable and 6 ft. USB Cable
- Hook & Loop Tabs and Push Pins
- Assembly and Installation Instructions

50+ miles



SPECIFICATIONS:

	MODEL NUMBER ECL-JT
	RANGE 50+ Miles
	FREQUENCY 470 to 608 MHz
	GAIN UHF: 4.35 dBi Amplifier: 18 dB
	AMPLIFIER NOISE FIGURE 1.8 dB
	BEAM ANGLE 70 Degrees (Horizontal Plane)- Wide reception pattern
	ASSEMBLED DIMENSIONS Antenna: 10" L x 0" W x .04" D Amplifier: 1 3/4" L x 1" W x 1/2" D
	WEIGHT Antenna: 1.4 oz. Amplifier: 2.3 oz.
	COLOR Black and White
	WARRANTY Lifetime Antenna Warranty 90-Day Accessory Warranty



Find TV Channels
Aim Your Antenna
FREE Antenna Point app
or go to antennapoint.com



antennasdirect.com 1-877-825-5572 U.S.A.
16388 Westwoods Business Park
Ellisville, Missouri 63021

Copyright ©2022 Antennas Direct™, Inc. All Rights Reserved.
Please visit www.antennasdirect.com/patents for all patent information.