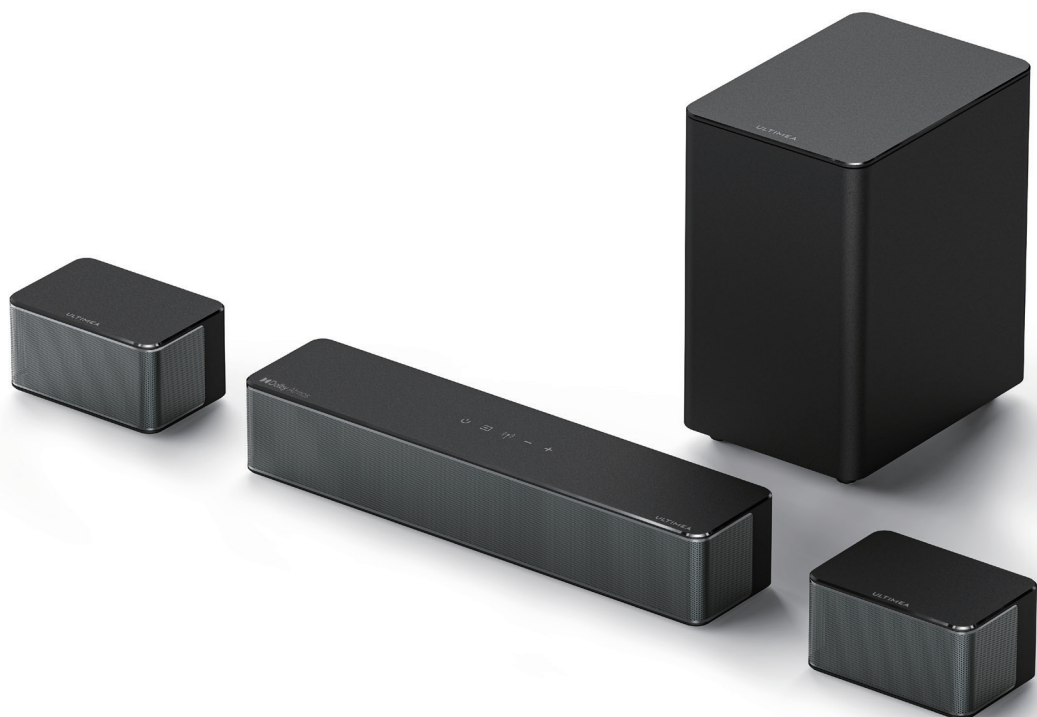


ULTIMEA



User Manual

Poseidon D60

Model No.: U2520
5.1 Channel Virtual Atmos Soundbar
support@ultimea.com

Contents

01 User Manual English

05 Benutzerhandbuch Deutsch

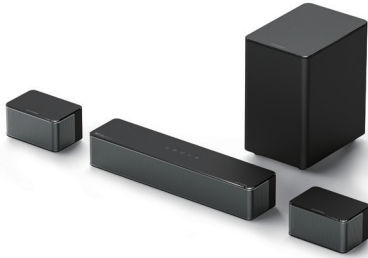
09 Mode d'Emploi Français

13 Manuale d'uso Italiano

17 Manual del usuario Español

21 ユーザーマニュアル 日本語

User Manual



Model No.: U2520

WE ARE
READY
TO HELP



support@ultimea.com

Prefer video tutorial?

Setup guidance video, USER MANUAL or Trouble Shooting on ULTIMEA website.

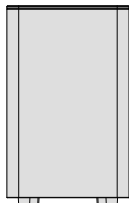
@Ultimea_Official



support.ultimea.com

+1 888-598-8875(US) Mon-Fri 9am-5pm(PST)
 +49 89-628-25828(EU) Mon-Fri 9am-5pm(CET)

1 ACCESSORIES LIST



Subwoofer



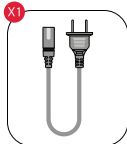
Soundbar



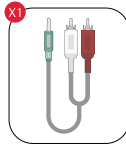
Surround Speaker x 2



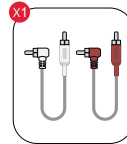
Power Adaptor



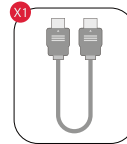
Subwoofer Power Cable



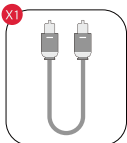
Stereo 3.5mm to RCA Audio Cable



Stereo RCA to RCA Cable(6m)



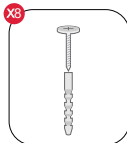
eARC Cable



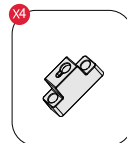
Digital Optical Cable



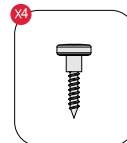
Remote Control



Wall Mounted Kit



Wall Bracket

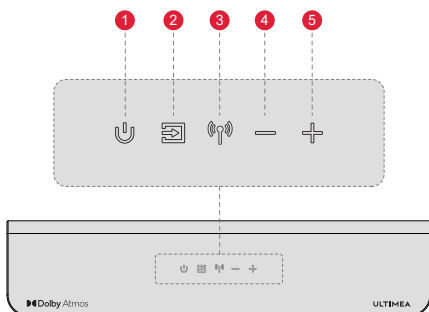


Mounting Screw on Speakers



User Manual

2 SOUNDBAR CONTROLS

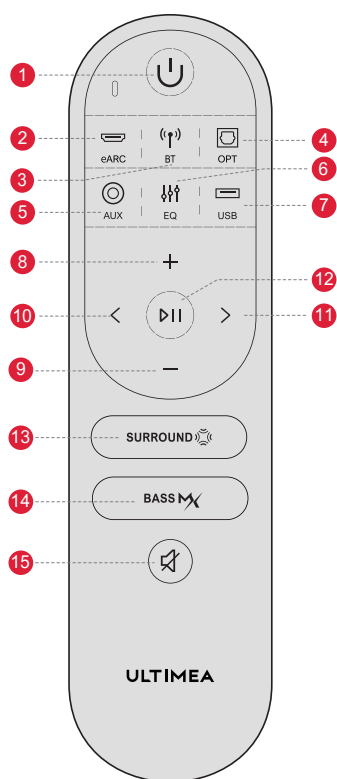


Control Panel

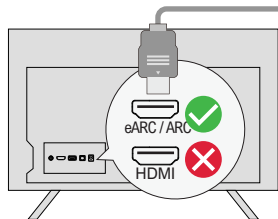
- 1 **“⏻”**: **Power Button**
Press to power on / Hold for 3 seconds to power off.
- 2 **“📺”**: **Input Mode**
Press to switch channels: eARC-BT-OPT-AUX-USB.
- 3 **“📶”**: **Bluetooth**
Press to switch to BT channel and enter pairing mode. Hold for 3 seconds to disconnect current device and choose to connect to a new device manually on your mobile phone / PC / TV (BT ID: Poseidon D60).
- 4 **“—”**: **Volume Down**
- 5 **“+”**: **Volume Up**

Remote Control

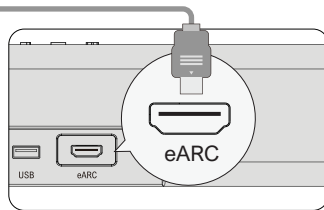
- 1 “⏻”: **Power Button**
Press to power on / Hold for 3 seconds to power off.
- 2 “eARC”: **eARC**
Press to switch to eARC channel.
- 3 “BT”: **BT**
Press to switch to BT channel and enter pairing mode. Hold for 3 seconds to disconnect current device and choose to connect to a new device manually on your mobile phone / PC / TV (BT ID: Poseidon D60).
- 4 “OPT”: **OPT**
Press to switch to OPT channel.
- 5 “AUX”: **AUX**
Press to switch to AUX channel.
- 6 “EQ”: **EQ**
Press to switch among Movie, Dialogue, Music mode, the display will show: “E90 i”, “E902”, “E903”.
- 7 “USB”: **USB**
Press to switch to USB channel.
- 8 “+”: **Volume Up**
- 9 “-”: **Volume Down**
- 10 “<”: **Previous**
BT and USB mode: Skip to previous track.
- 11 “>”: **Next**
BT and USB mode: Skip to next track.
- 12 “⏮”: **Play / Pause**
For BT and USB mode only.
USB mode: Hold for 3 seconds to switch between single loop playback and list loop playback.
- 13 “SURROUND”: **Surround**
Press to adjust surround sound level, the display will show: “5r- i”, “5r 0”, “5r i”.
- 14 “BASS Mx”: **BASSMX**
Press to adjust bass level, the display will show: “b5- i”, “b5 0”, “b5 i”.
- 15 “🔇”: **Mute / Recover the volume.**



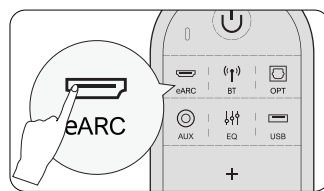
3 CONNECT TO TV VIA eARC / ARC



Step 1:
Connect one end of the HDMI cable to the eARC / ARC port on the back of your TV.



Step 2:
Then connect the other end into the eARC port of the soundbar.



Step 3:
Press “eARC” button on the remote control to select “eARC” input.

Note:

1 Your TV's HDMI port needs to support eARC to transmit the Dolby Atmos audio format to your Soundbar.

Atmos: If you are watching a movie in the Dolby Atmos format, please set the audio output on your TV to Pass Through:
TV Settings > Home > Settings > Sound > Digital Audio Output > Pass Through

DTS: If you are watching a movie in the DTS format, please set the audio output on your TV to PCM:
TV Settings > Home > Settings > Sound > Digital Audio Output > PCM

2 If your TV HDMI only supports ARC, please set the audio output on your TV to PCM.
TV Settings > Home > Settings > Sound > Digital Audio Output > PCM

What's the difference between: HDMI IN, HDMI ARC, HDMI eARC?

1 **HDMI IN** is a standard HDMI input that allows you to connect devices to your TV or audio system. It supports audio and video signals, but it does not support audio return channel (ARC) or enhanced audio return channel (eARC) functionality.

2 **HDMI ARC** is a special HDMI port that supports two-way communication between your TV and audio system. This means that audio can be sent from your TV to your audio system, and audio system can send audio back to your TV.

3 **HDMI eARC** (Enhanced Audio Return Channel) is an updated version of HDMI ARC that supports higher quality audio formats such as Dolby Atmos and DTS:X.

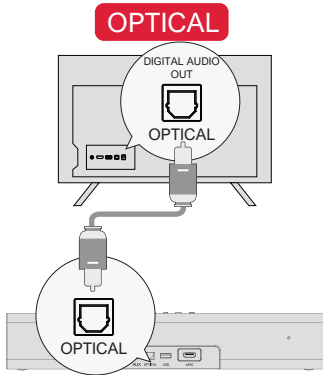
Note: Please turn on the “CEC” function on your TV.

When eARC / ARC is connected, your TV remote control can control the soundbar and TV simultaneously:

- 1 Turn on / off
- 2 Adjust the volume

4 CONNECT TO TV VIA OPTICAL / AUX

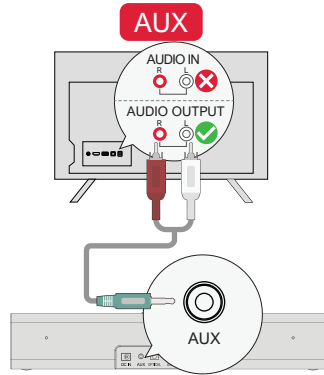
EN



OPTION 1: OPTICAL

NOTE:

- 1 Make sure the TV's port is OPTICAL OUT.
- 2 If audio is coming from the internal TV speakers, mute or minimize the TV volume.



OPTION 2: AUX

NOTE:

- 1 Connect the 3.5mm to RCA Audio Cable to your TV's AUDIO OUT port.
- 2 Make sure the color of the cable ends matches the color of the TV ports.

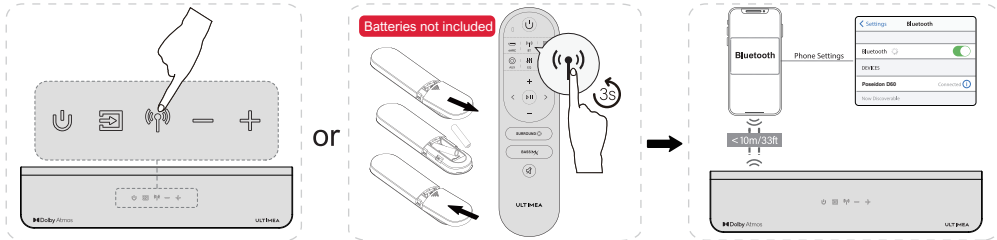
In Optical Mode: If there is no sound, try setting the TV audio output to PCM: TV Settings > Home > Settings > Sound > Digital Audio Output > PCM

5 CONNECT TO BLUETOOTH

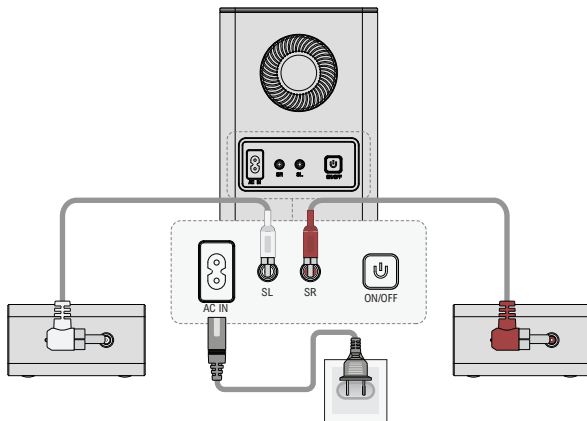
NOTE:

- 1 Press the “(P)” button on the soundbar or remote control to enter Bluetooth pairing mode.
- 2 Go to the Bluetooth setting on your phone, find and select “Poseidon D60” to connect the soundbar.

Note: If it's already in the Bluetooth mode and connected, press and hold “(P)” button for 3 seconds to disconnect current device and choose to connect to new device manually on your mobile phone / PC / TV.

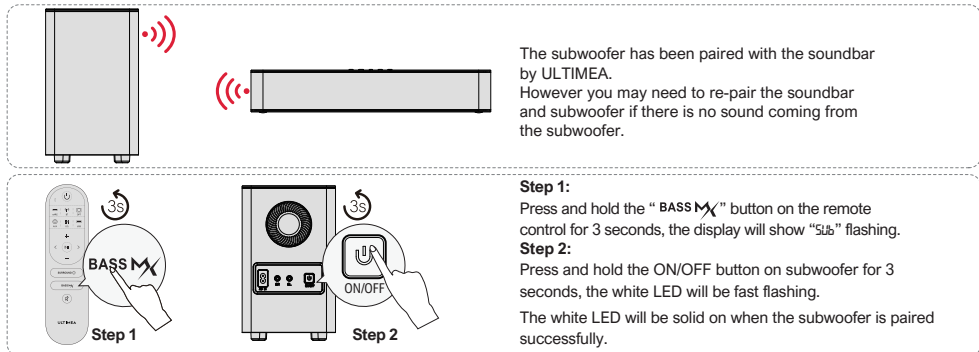


6 CONNECT TO SUBWOOFER AND SURROUND SPEAKERS



- 1 Use the 6m RCA-RCA cables to connect the subwoofer and surround speakers, please pay attention to match the same color interfaces on the surround speakers with the corresponding ones on the subwoofer and place the surround speakers accordingly.
- 2 Use power cable to connect your subwoofer and power port.

7 PAIRING SUBWOOFER



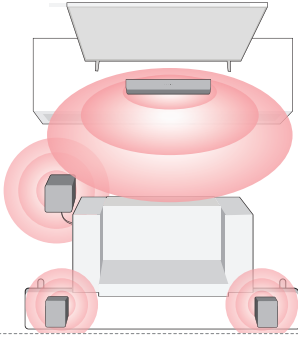
The subwoofer has been paired with the soundbar by ULTIMEA. However you may need to re-pair the soundbar and subwoofer if there is no sound coming from the subwoofer.

- Step 1:**
Press and hold the “BASS Mx” button on the remote control for 3 seconds, the display will show “Sub” flashing.
- Step 2:**
Press and hold the ON/OFF button on subwoofer for 3 seconds, the white LED will be fast flashing. The white LED will be solid on when the subwoofer is paired successfully.

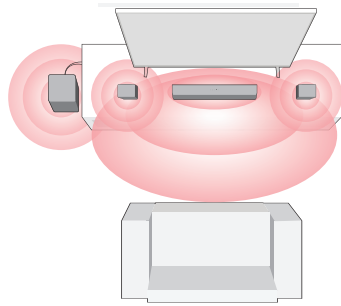
8 PLACEMENT OPTIONS

EN

Full 360° Surround (Better Surround)

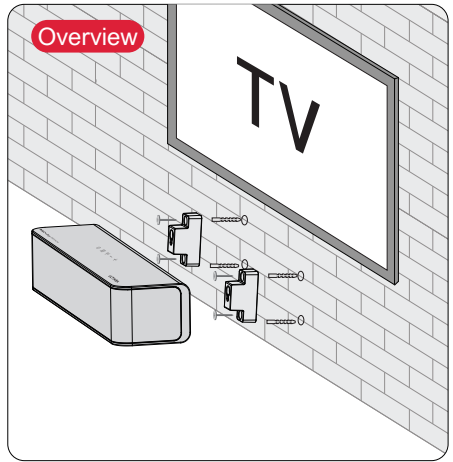
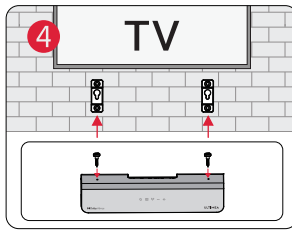
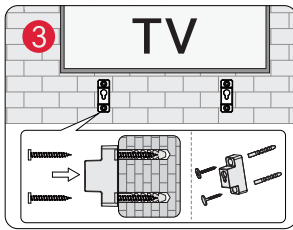
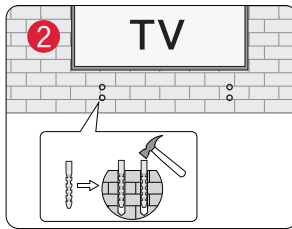
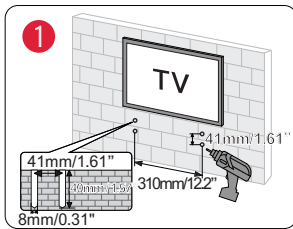


Front Surround



- 1 For a better listening experience, please choose one of the two placement options shown in the illustration above based on your home environment.
- 2 The soundbar and surround speakers should be placed at or near ear level.

9 WALL MOUNT INSTALLATION



Note: Wall-mounted surround speakers follow the same configuration as shown in the above pictures

10 SPECIFICATIONS

Model Number	U2520
Power Supply	AC 110-240V, ~50/60Hz
Soundbar Drivers	2.25" x 3 (Soundbar) + 2.25" x 2 (Surround Speaker) + 5.25" (Subwoofer)
Frequency Response	40Hz - 18kHz
Standby Power	<0.5W
Operating Temperature	0°C - 45°C/32°F - 113°F

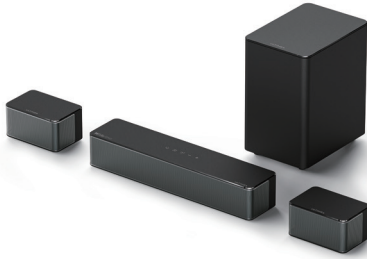
Dimensions and Weight	
Soundbar	400(W) x 70(H) x 90(D)mm 15.7" x 2.8" x 3.5"
Subwoofer	155(W) x 244(H) x 215(D)mm 6.1" x 9.6" x 8.5"
Surround Speaker	135(W) x 70(H) x 90 (D)mm 5.3" x 2.8" x 3.5"
Packaging	335(W) x 442(H) x 192(D)mm 13.1" x 17.4" x 7.5"
Net Weight	5.7kg / 12.6lbs
Gross Weight	6.3kg / 13.9lbs

Benutzerhandbuch

WIR SIND
BEREIT ZU
HELFE



support@ultimea.com



Modell Nr.: U2520

Bevorzugen Sie ein Video-Tutorial?

Richten Sie auf der ULTIMEA-Website ein Leitfadenvideo, ein Benutzerhandbuch oder eine Fehlerbehebung ein.



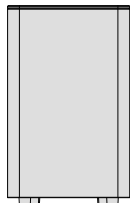
@Ultimea_Official

+1 888-598-8875(US) Mon-Fri 9am-5pm(PST)
+49 89-628-25828(EU) Mon-Fri 9am-5pm(CET)



support.ultimea.com

1 ZUBEHÖRLISTE



Subwoofer



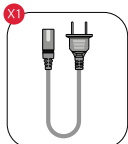
Soundbar



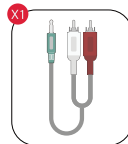
Surround Sprecher x 2



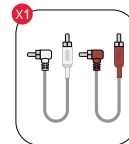
Netzadapter



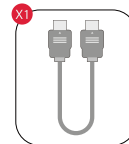
Subwoofer-Netzka-
bel



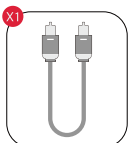
Stereo 3,5mm auf
RCA Audiokabel



Stereo RCA zu
RCA Kabel (6m)



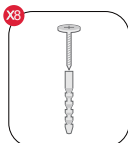
eARC-Kabel



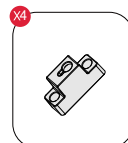
Optisches
Digitalkabel



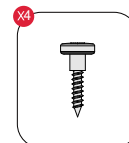
Fernbedienung



Wandmontage-Kit



Wandhalterung

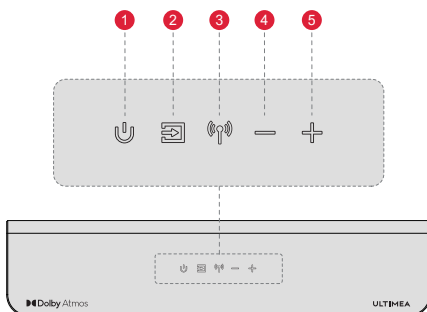


Innensechskantschraube



Benutzerhandbuch

2 SOUNDBAR-BEDIENELEMENTE

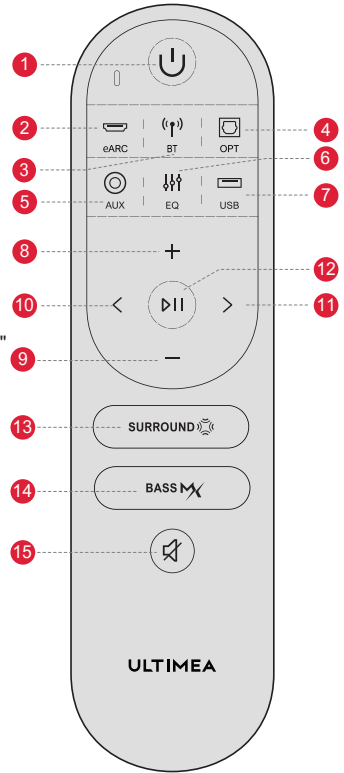


Bedienfeld

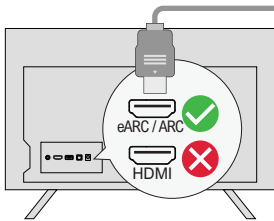
- 1 "⏻": **Einschalttaste**
Zum Einschalten drücken / zum Ausschalten 3 Sekunden lang gedrückt halten.
- 2 "TV": **Eingangsmodus**
Drücken, um den Kanal zu wechseln: eARC-BT-OPT-AUX-USB.
- 3 "📶": **Bluetooth**
Drücken, um zum BT-Kanal zu wechseln / 3 Sekunden lang gedrückt halten, um die Verbindung zum aktuellen Gerät zu trennen und mit einem neuen Gerät zu verbinden. (BT ID: Poseidon D60).
- 4 "−": **Lautstärke verringern**
- 5 "⊕": **Lauter**

Fernsteuerung

- 1 "U": **Einschalttaste**
Zum Einschalten drücken / zum Ausschalten 3 Sekunden lang gedrückt halten.
- 2 "eARC": **eARC**
Drücken, um zum eARC-Kanal zu wechseln.
- 3 "BT": **BT**
Drücken Sie die Taste, um den BT-Kanal zu wechseln und den Kopplungsmodus zu aktivieren. Halten Sie die Taste 3 Sekunden lang gedrückt, um die Verbindung zum aktuellen Gerät zu trennen, und wählen Sie auf Ihrem Mobiltelefon/PC/Fernseher die manuelle Verbindung zum neuen Gerät.
- 4 "OPT": **OPT**
Drücken, um zum OPTICAL-Kanal zu wechseln.
- 5 "AUX": **AUX**
Drücken Sie diese Taste, um zum AUX-Kanal zu wechseln.
- 6 "EQ": **EQ**
Drücken Sie diese Taste, um zwischen den Modi "Film", "Dialog" und "Musik" umzuschalten; auf dem Display wird angezeigt: "EQ 1", "EQ 2", "EQ 3".
- 7 "USB": **USB**
Drücken Sie diese Taste, um zum USB-Kanal zu wechseln.
- 8 "+": **Lautstärke aufwärts**
- 9 "-": **Lautstärke runter**
- 10 "<": **Zurück**
BT- und USB-Modus: Zum vorherigen Titel springen.
- 11 ">": **Nächster**
BT- und USB-Modus: Sprung zum nächsten Titel.
- 12 "||": **Wiedergabe/Pause**
Nur für BT- und USB-Modus.
USB-Modus: Halten Sie die Taste 3 Sekunden lang gedrückt, um zwischen Einzelschleifenwiedergabe und Listenschleifenwiedergabe umzuschalten.
- 13 "SURROUND": **Surround**
Drücken Sie, um den Surround-Soundpegel anzupassen, das Display wird angezeigt: "5f-1", "5f 2", "5f 1".
- 14 "BASS MX": **BASSMX**
Drücken Sie diese Taste, um den Basspegel einzustellen; auf dem Display wird angezeigt: "b5-1" "b5 2" "b5 1".
- 15 "Mute": **Stummschaltung / Wiederherstellung der Lautstärke.**

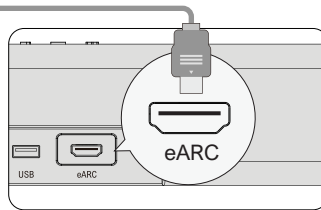


3 VERBINDEN MIT DEM FERNSEHER ÜBER eARC / ARC



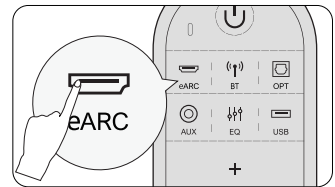
Schritte 1:

Schließen Sie ein Ende des HDMI-Kabels an den eARC/ARC-Anschluss auf der Rückseite Ihres Fernsehers an.



Schritte 2:

Schließen Sie dann das andere Ende an den eARC-Anschluss der Soundbar an.



Schritte 3:

Drücken Sie die Taste "eARC" auf der Fernbedienung, um den Eingang "eARC" auszuwählen.

Hinweis:

1 Der HDMI-Anschluss Ihres Fernsehers muss eARC unterstützen, um das Dolby Atmos-Audioformat an Ihre Soundbar zu übertragen.

Atmos: Wenn Sie einen Film im Dolby Atmos-Format ansehen, stellen Sie bitte den Audioausgang an Ihrem Fernseher auf Pass Through: TV-Einstellungen > Home > Einstellungen > Ton > Digitaler Audioausgang > Pass Through

DTS: Wenn Sie einen Film im DTS-Format ansehen, stellen Sie den Audioausgang an Ihrem Fernseher bitte auf PCM: TV-Einstellungen > Home > Einstellungen > Ton > Digitaler Audioausgang > PCM

2 Wenn Ihr HDMI-Fernseher nur ARC unterstützt, stellen Sie den Audioausgang Ihres Fernsehers bitte auf PCM ein: TV-Einstellungen > Home > Einstellungen > Ton > Digitaler Audioausgang > PCM

Was ist der Unterschied zwischen: HDMI IN, HDMI ARC, HDMI eARC?

1 **HDMI IN** ist ein Standard-HDMI-Eingang, über den Sie Geräte an Ihren Fernseher oder Ihr Audiosystem anschließen können. Er unterstützt Audio- und Videosignale, aber keine Audio-Rückkanal (ARC) oder Enhanced Audio Return Channel (eARC) Funktionalität.

2 **HDMI ARC** ist ein spezieller HDMI-Anschluss, der die Zwei-Wege-Kommunikation zwischen Ihrem Fernsehgerät und Ihrem Audiosystem unterstützt. Das bedeutet, dass Audiosignale von Ihrem Fernseher an Ihr Audiosystem gesendet werden können und das Audiosystem Audiosignale zurück an Ihren Fernseher senden kann.

3 **HDMI eARC** (Enhanced Audio Return Channel) ist eine aktualisierte Version von HDMI ARC, die höherwertige Audioformate wie Dolby Atmos und DTS:X unterstützt.

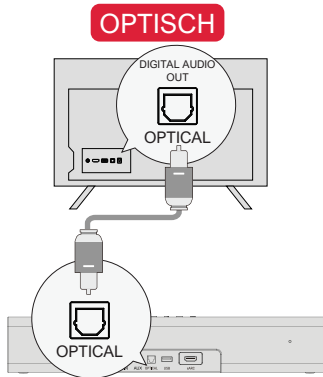
Hinweis: Bitte schalten Sie die "CEC"-Funktion an Ihrem Fernseher ein.

Wenn die eARC/ARC angeschlossen ist, kann Ihre TV-Fernbedienung die Soundbar und den Fernseher gleichzeitig steuern:

- 1 Einschalten/Ausschalten
- 2 Lautstärke einstellen

4 ANSCHLUSS AN FERNSEHER ÜBER OPTISCH / AUX

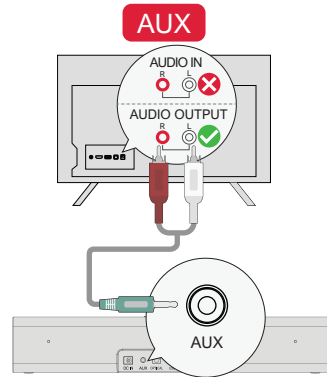
DE



OPTION 1: OPTISCH

HINWEIS:

- 1 Vergewissern Sie sich, dass der Anschluss des Fernsehers auf OPTICAL OUT eingestellt ist.
- 2 Wenn der Ton aus den internen Lautsprechern des Fernsehers kommt, schalten Sie die Lautstärke des Fernsehers stumm oder verringern Sie sie.



OPTION 2: AUX

HINWEIS:

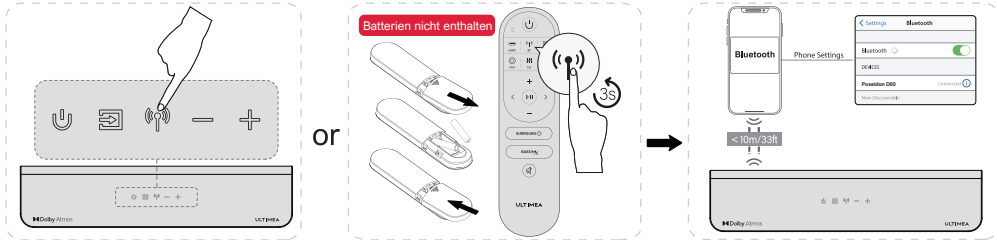
- 1 Schließen Sie das 3,5-mm-Cinch-Audiokabel an den RCA AUDIO OUT-Anschluss Ihres Fernsehers an.
- 2 Achten Sie darauf, dass die Farbe der Kabelenden mit der Farbe der TV-Anschlüsse übereinstimmt.

Im optischen Modus: Wenn kein Ton zu hören ist: Wenn kein Ton zu hören ist, versuchen Sie, den Audioausgang des Fernsehers auf PCM einzustellen:
TV-Einstellungen > Home > Einstellungen > Ton > Digitaler Audioausgang > PCM

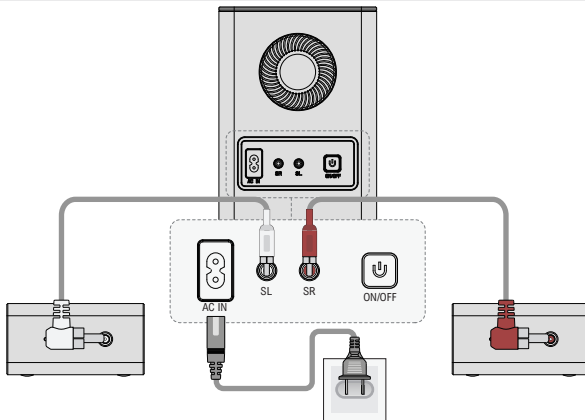
5 MIT BLUETOOTH VERBINDEN

HINWEIS:

- 1 Drücken Sie die Taste "BT" an der Soundbar oder auf der Fernbedienung, um den Bluetooth-Modus zu aktivieren.
 - 2 Gehen Sie zu den Bluetooth-Einstellungen auf Ihrem Telefon, suchen Sie "Poseidon D60" und wählen Sie es aus, um die Soundbar zu verbinden.
- Hinweis:** Wenn sich das Gerät bereits im Bluetooth-Modus befindet und verbunden ist, halten Sie die Taste "BT" 3 Sekunden lang gedrückt, um die Verbindung zum aktuellen Gerät zu trennen, und wählen Sie die Verbindung zum neuen Gerät manuell auf Ihrem Mobiltelefon/PC/Fernseher.

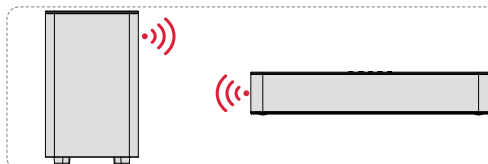


6 ANSCHLUSS AN SUBWOOFER UND SURROUND-LAUTSPRECHER

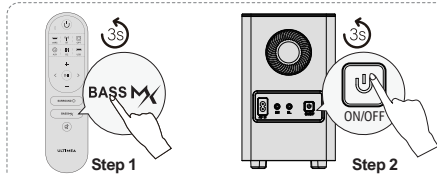


- 1 Verwenden Sie die 6 m langen Cinch-Cinch-Kabel, um den Subwoofer und die Surround-Lautsprecher anzuschließen. Achten Sie darauf, dass die Surround-Lautsprecher die gleichen farbigen Anschlüsse wie der Subwoofer haben, und platzieren Sie die Surround-Lautsprecher entsprechend.
- 2 Verwenden Sie das Netzkabel, um den Subwoofer mit dem Netzanschluss zu verbinden.

7 GEKOPPELTER SUBWOOFER



Der Subwoofer wurde von ULTIMEA mit der Soundbar gekoppelt.
Es kann jedoch sein, dass Soundbar und Subwoofer neu gekoppelt werden müssen, wenn kein Ton vom Subwoofer kommt.



Schritt 1:

Halten Sie die Taste "BASS" auf der Fernbedienung 3 Sekunden lang gedrückt, auf dem Display blinkt "SLB".

Schritt 2:

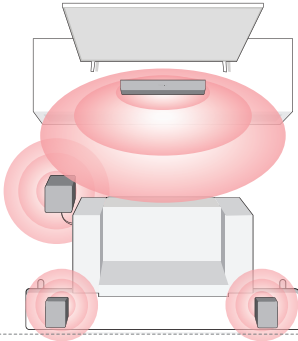
Halten Sie die ON/OFF-Taste am Subwoofer 3 Sekunden lang gedrückt, die weiße LED blinkt schnell.

Die weiße LED leuchtet dauerhaft, wenn der Subwoofer erfolgreich gekoppelt wurde.

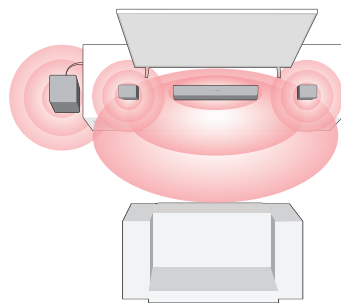
8 PLATZIERUNGSOPTION

DE

Vollständiger 360°-Surround (Besserer Surround)

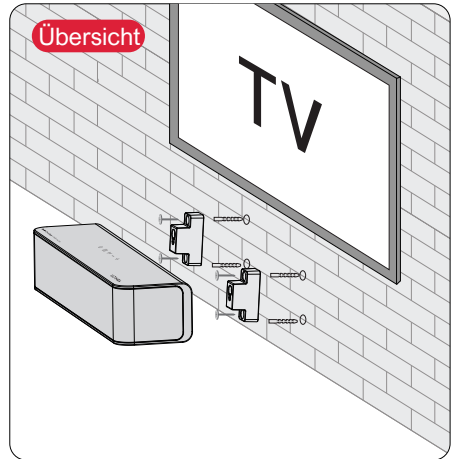
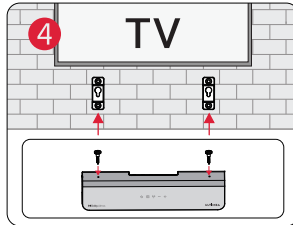
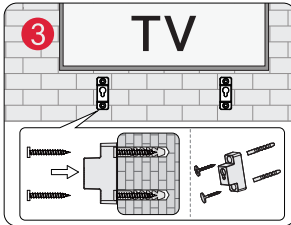
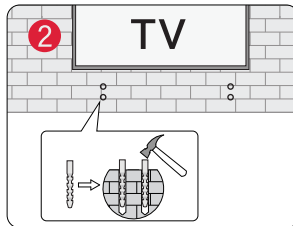
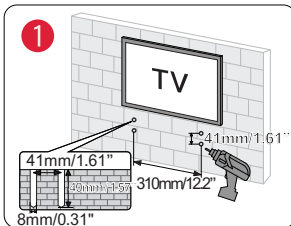


Front-Surround



- 1 Für ein besseres Hörerlebnis wählen Sie bitte eine der beiden in der obigen Abbildung gezeigten Aufstellungsoptionen, je nach Ihrer Wohnumgebung.
- 2 Die Soundbar und die Surround-Lautsprecher sollten auf oder nahe der Ohrhöhe aufgestellt werden.

9 WANDMONTAGE



Anmerkung: Die Wandmontage der Surround-Lautsprecher erfolgt in der gleichen Konfiguration wie in den obigen Abbildungen gezeigt.

10 SPEZIFIKATIONEN

Modell-nummer	U2520
Stromversorgung	AC 110-240V, ~50/60Hz
Soundbar-Treiber	2,25" x 3 (Soundbar) + 2,25" x 2 (Surround-Lautsprecher) + 5,25" (Subwoofer)
Frequenzgang	40Hz - 18kHz
Standby-Leistung	<0.5W
Betriebstemperatur	0°C - 45°C/32°F - 113°F

Abmessungen und Gewicht	
Soundbar	400(W) x 70(H) x 90(D)mm 15.7" x 2.8" x 3.5"
Subwoofer	155(W) x 244(H) x 215(D)mm 6.1" x 9.6" x 8.5"
Surround-Lautsprecher	135(W) x 70(H) x 90 (D)mm 5.3" x 2.8" x 3.5"
Packaging	335(W) x 442(H) x 192(D)mm 13.1" x 17.4" x 7.5"
Nettogewicht	5.7kg / 12.6lbs
Bruttogewicht	6.3kg / 13.9lbs

ULTIMEA

Poseidon D60

Manuel de l'Utilisateur

NOUS SOMMES PRÊTS À VOUS AIDER



support@ultimea.com

FR



Modèle n° : U2520

Vous préférez un tutoriel vidéo ?

Vidéos d'instructions de configuration, manuels d'utilisation ou dépannage sur le site Web ultimea.

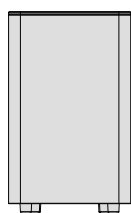
@Ultimea_Official



support.ultimea.com

+1 888-598-8875(US) Mon-Fri 9am-5pm(PST)
+49 89-628-25828(EU) Mon-Fri 9am-5pm(CET)

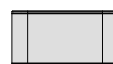
1 LISTE DES ACCESSOIRES



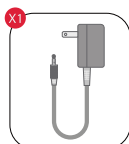
Caisson de basse



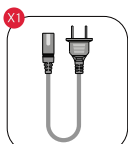
Barre de son



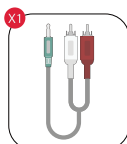
Enceintes Surround x 2



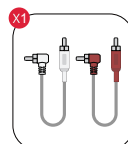
Adaptateur d'Alimentation



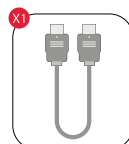
Câble d'alimentation du caisson de basse



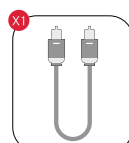
Câble Audio Stéréo 3,5 mm vers RCA



Stereo RCA zu RCA Kabel (6m)



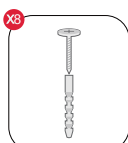
Câble eARC



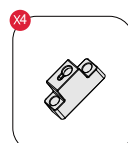
Câble Numérique Optique



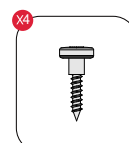
Télécommande



Kit de Montage Mural



Support Mural



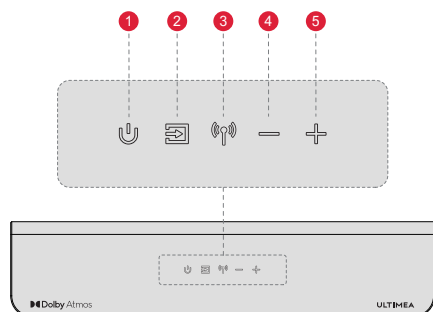
Vis de montage sur les haut-parleurs



Manuel de l'Utilisateur

2 COMMANDES DE LA BARRE DE SON

Panneau de Contrôle



1 "⏻": Bouton d'Alimentation

Appuyez sur ce bouton pour allumer l'appareil / Maintenez-le enfoncé pendant 3 secondes pour l'éteindre

2 "📺": Mode d'Entrée

Appuyez pour changer de canal : eARC-BT-OPT-AUX-USB.

3 "📶": Bluetooth

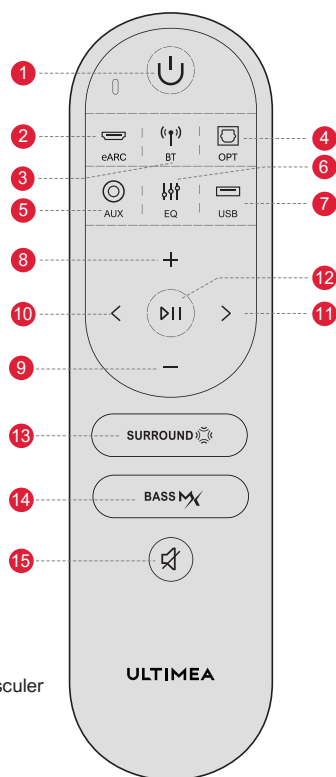
Appuyez sur cette touche pour changer de canal BT et entrer en mode d'appairage. Maintenez la touche enfoncée pendant 3 secondes pour déconnecter l'appareil actuel et choisissez de vous connecter manuellement au nouvel appareil sur votre téléphone portable / PC / TV (BT ID: Poseidon D60).

4 "⏪": Diminution du volume

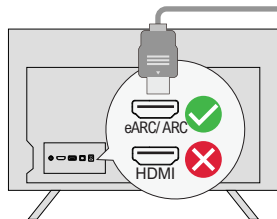
5 "⏩": Augmentation du volume

Télécommande

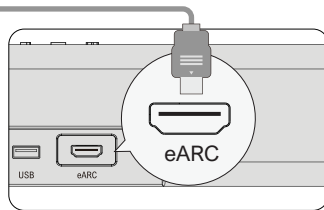
- 1 "⏻": **Bouton d'alimentation**
Appuyer pour allumer / Maintenir pendant 3 secondes pour éteindre.
- 2 "eARC": **eARC**
Appuyez sur cette touche pour passer au canal eARC.
- 3 "BT": **BT**
Pressez pour changer de canal BT et entrer dans le mode d'appairage. Maintenez la touche enfoncée pendant 3 secondes pour déconnecter l'appareil actuel et choisissez de vous connecter manuellement au nouvel appareil sur votre téléphone portable / PC / TV (BT ID : Poseidon D60).
- 4 "OPT": **OPT**
Appuyez sur cette touche pour passer au canal OPTICAL.
- 5 "AUX": **AUX**
Appuyez sur cette touche pour passer au canal AUX.
- 6 "EQ": **EQ**
Appuyez sur cette touche pour basculer entre les modes Film, Dialogue et Musique: "EQ1", "EQ2", "EQ3".
- 7 "USB": **USB**
Appuyez sur cette touche pour passer au canal USB.
- 8 "+": **Augmentation du volume**
- 9 "-": **Diminution du volume**
- 10 "<": **Précédent**
Mode BT et USB : passer à la piste précédente.
- 11 ">": **Suivant**
Mode BT et USB : passer à la piste suivante.
- 12 "⏸": **Jouer / Pause**
Pour les modes BT et USB uniquement.
Mode USB : Maintenez cette touche enfoncée pendant 3 secondes pour basculer entre la lecture d'une boucle unique et la lecture d'une boucle de liste.
- 13 "SURROUND": **Surround**
Appuyez pour ajuster le volume du son surround, l'écran affichera: "5F-1", "5F2", "5F1".
- 14 "BASS": **BASSMX**
Appuyez sur cette touche pour régler le niveau des basses, l'écran affiche: "b5-1", "b52", "b51".
- 15 "🔇": **Mute / Récupérer le volume.**



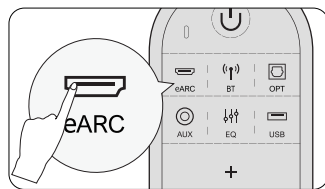
3 CONNECTER AU TÉLÉVISEUR VIA eARC / ARC



Etapes 1:
Connectez une extrémité du câble HDMI au port eARC/ARC à l'arrière de votre téléviseur.



Etapes 2:
Connectez ensuite l'autre extrémité au port eARC de la barre de son.



Etapes 3:
Appuyez sur le bouton "eARC" de la télécommande pour sélectionner l'entrée "eARC".

REMARQUE :

1 Le port HDMI de votre téléviseur doit prendre en charge l'eARC pour transmettre le format audio Dolby Atmos à votre barre de son.

Atmos: Si vous regardez un film au format Dolby Atmos, réglez la sortie audio de votre téléviseur sur Pass Through :

Réglages TV > Accueil > Réglages > Son > Sortie audio numérique > Pass Through

DTS: Si vous regardez un film au format DTS, réglez la sortie audio de votre téléviseur sur PCM :

Réglages TV > Accueil > Réglages > Son > Sortie audio numérique > PCM

2 Si le HDMI de votre téléviseur ne prend en charge que l'ARC, réglez la sortie audio de votre téléviseur sur PCM:

Réglages TV > Accueil > Réglages > Son > Sortie audio numérique > PCM

Quelle est la différence entre : HDMI IN, HDMI ARC, HDMI eARC?

1 **HDMI IN** est une entrée HDMI standard qui vous permet de connecter des appareils à votre téléviseur ou à votre système audio. Elle prend en charge les signaux audio et vidéo, mais ne prend pas en charge la fonctionnalité de canal de retour audio (ARC) ou de canal de retour audio amélioré (eARC).

2 **HDMI ARC** est un port HDMI spécial qui prend en charge la communication bidirectionnelle entre votre téléviseur et votre système audio. Cela signifie que l'audio peut être envoyé de votre téléviseur à votre système audio, et que le système audio peut renvoyer l'audio à votre téléviseur.

3 **HDMI eARC** (Enhanced Audio Return Channel) est une version actualisée de HDMI ARC qui prend en charge des formats audio de qualité supérieure tels que Dolby Atmos et DTS:X.

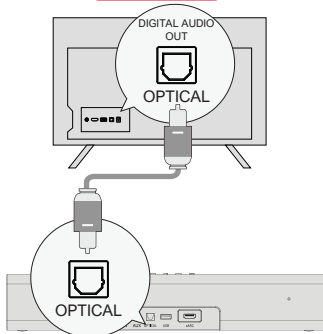
Remarque : Veuillez activer la fonction "CEC" sur votre téléviseur.

Lorsque l'eARC/ARC est connecté, la télécommande du téléviseur peut contrôler simultanément la barre de son et le téléviseur:

- 1 Allumer/éteindre
- 2 Régler le volume

4 CONNECTER AU TÉLÉVISEUR VIA OPTIQUE / AUX

OPTIQUE



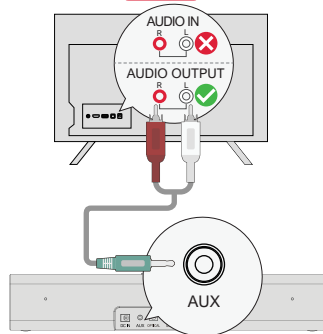
OPTION 1 : OPTIQUE

REMARQUE:

- 1 Assurez-vous que le port du téléviseur est la SORTIE OPTIQUE.
- 2 Si l'audio provient des haut-parleurs internes du téléviseur, coupez ou réduisez le volume du téléviseur. internes du téléviseur, mettez en sourdine ou réduisez le volume du téléviseur.

En mode optique : S'il n'y a pas de son : essayez de régler la sortie audio du téléviseur sur PCM:
Réglages du téléviseur > Accueil > Réglages > Son > Sortie audio numérique > PCM

AUX



OPTION 2 : AUX

REMARQUE:

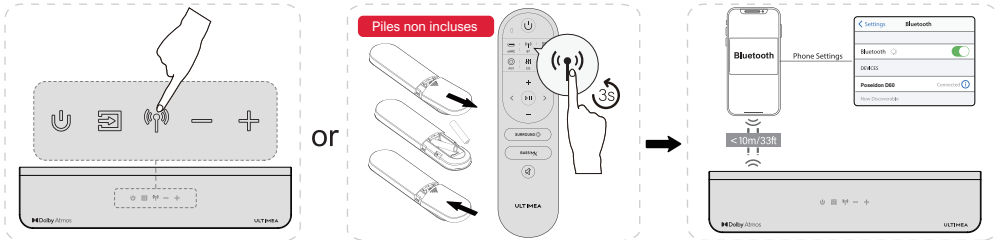
- 1 Connectez le câble audio 3,5 mm vers RCA au port RCA AUDIO OUT de votre téléviseur.
- 2 Veillez à ce que la couleur des extrémités du câble corresponde à celle des ports du téléviseur.

5 CONNECTER AU BLUETOOTH

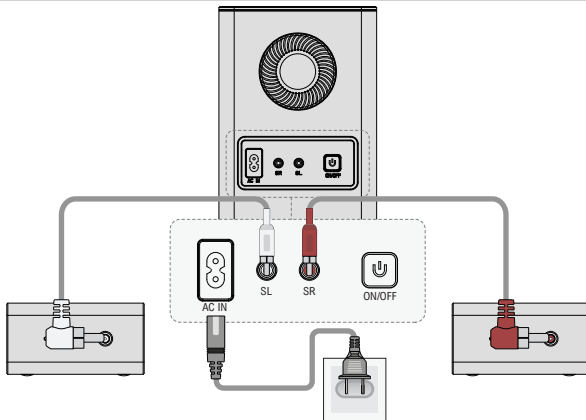
REMARQUE :

- 1 appuyez sur le bouton "Bluetooth" de la barre de son ou de la télécommande pour entrer dans le mode Bluetooth.
- 2 allez dans les paramètres Bluetooth de votre téléphone, trouvez et sélectionnez "Poseidon D60" pour connecter la barre de son.

Remarque : Si l'appareil est déjà en mode Bluetooth et connecté, appuyez sur le bouton "Bluetooth" et maintenez-le enfoncé pendant 3 secondes pour déconnecter l'appareil actuel et choisir de vous connecter manuellement à un nouvel appareil sur votre téléphone portable / PC / TV.

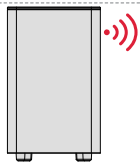


6 CONNEXION AU CAISSON DE BASSE ET AUX ENCEINTES SURROUND



- 1 Utilisez les câbles RCA-RCA de 6 m pour connecter le caisson de basse et les enceintes surround. Veillez à ce que les interfaces de couleur des enceintes surround correspondent à celles du caisson de basse et placez les enceintes surround en conséquence.
- 2 Utilisez le câble d'alimentation pour connecter votre caisson de basse et le port d'alimentation.

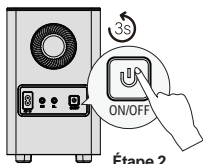
7 SUBWOOFER APPARIÉ



Le caisson de basse a été apparié à la barre de son par ULTIMEA. Toutefois, si le caisson de basses n'a pas de son, vous devrez peut-être réappairer la barre de son et le caisson de basses.



Étape 1



Étape 2

Étape 1:

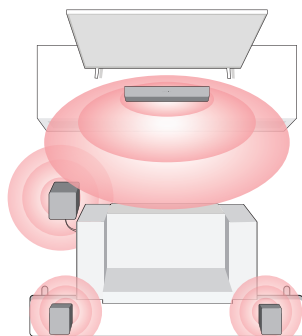
Appuyez sur le bouton "BASS Mx" de la télécommande et maintenez-le enfoncé pendant 3 secondes, l'écran affiche "SM" en clignotant.

Étape 2:

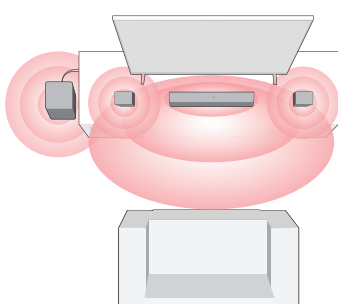
Appuyez sur le bouton ON/OFF du subwoofer et maintenez-le enfoncé pendant 3 secondes, la LED blanche clignote rapidement. Le voyant blanc s'allume lorsque le caisson de basse est apparié avec succès.

8 OPTION DE PLACEMENT

Entourage complet à 360° (Meilleur entourage)

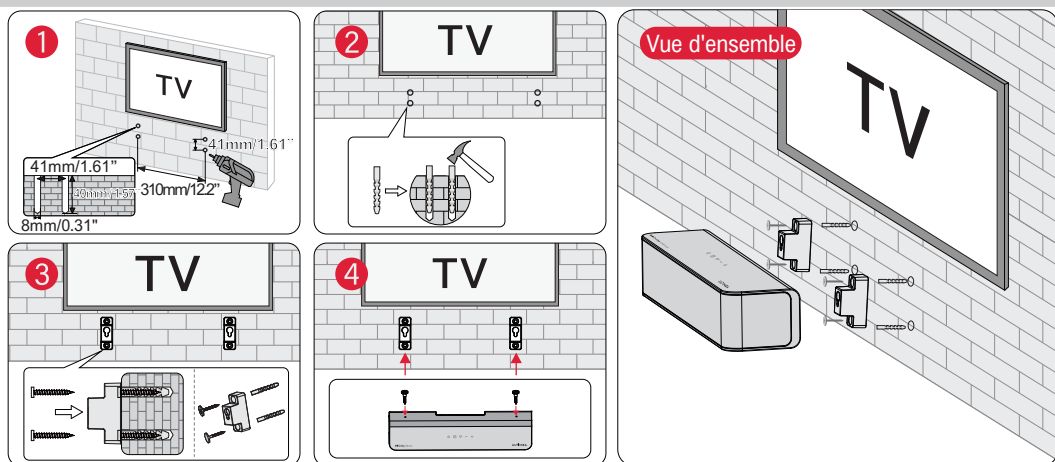


Surround avant



- 1 Pour une meilleure expérience d'écoute, choisissez l'une des deux options de placement indiquées dans l'illustration ci-dessus en fonction de votre environnement domestique.
- 2 La barre de son et les enceintes surround doivent être placées au niveau des oreilles ou à proximité.

9 INSTALLATION MURALE



Remarque : Le montage mural des enceintes surround suit la même configuration que celle illustrée dans les images ci-dessus.

10 CARACTÉRISTIQUES TECHNIQUES

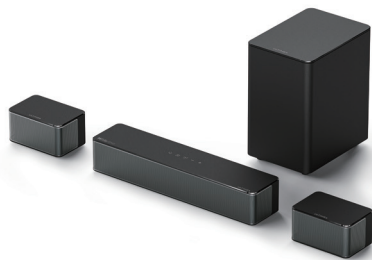
Modèle	U2520
Alimentation Électrique	AC 110-240V, ~50/60Hz
Haut-parleurs de la Barre de Son	2,25" x 3 (barre de son) + 2,25" x 2 (Haut-parleur surround) + 5,25" (caisson de basse)
Réponse en Fréquence	40Hz - 18kHz
Puissance en Veille	<0.5W
Température de Fonctionnement	0°C - 45°C/32°F - 113°F

Dimensions et Poids	
Barre de son	400(W) x 70(H) x 90(D)mm 15.7" x 2.8" x 3.5"
Caisson de basse	155(W) x 244(H) x 215(D)mm 6.1" x 9.6" x 8.5"
Haut-parleur surround	135(W) x 70(H) x 90 (D)mm 5.3" x 2.8" x 3.5"
Emballage	335(W) x 442(H) x 192(D)mm 13.1" x 17.4" x 7.5"
Poids Net	5.7kg / 12.6lbs
Poids Brut	6.3kg / 13.9lbs

ULTIMEA

Poseidon D60

Manuale d'uso



Modello n.: U2520

SIAMO PRONTI AD AIUTARE



support@ultimea.com

IT

Preferite un video tutorial?

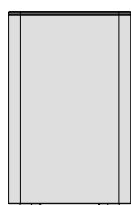
Video guida all'installazione, manuale utente o risoluzione dei problemi sul sito ULTIMEA.



support.ultimea.com

+1 888-598-8875(US) Mon-Fri 9am-5pm(PST)
+49 89-628-25828(EU) Mon-Fri 9am-5pm(CET)

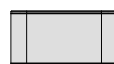
1 ELENCO ACCESSORI



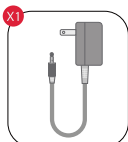
Subwoofer



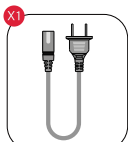
Soundbar



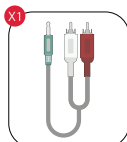
Altoparlante Surround x 2



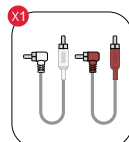
Adattatore di alimentazione



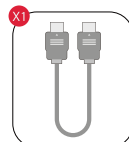
Cavo di alimentazione del subwoofer



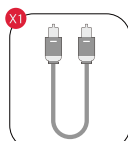
Cavo audio stereo da 3,5 mm a RCA



Cavo stereo da RCA a RCA (6m)



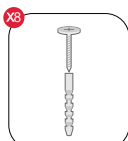
Cavo eARC



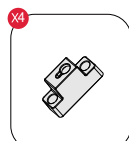
Cavo ottico digitale



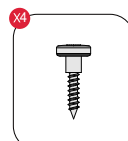
Telecomando



Kit di montaggio a parete



Staffa a muro

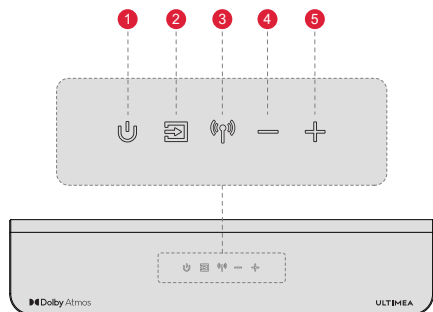


Viti di montaggio sui diffusori



Manuale d'uso

2 CONTROLLI DELLA SOUNDBAR

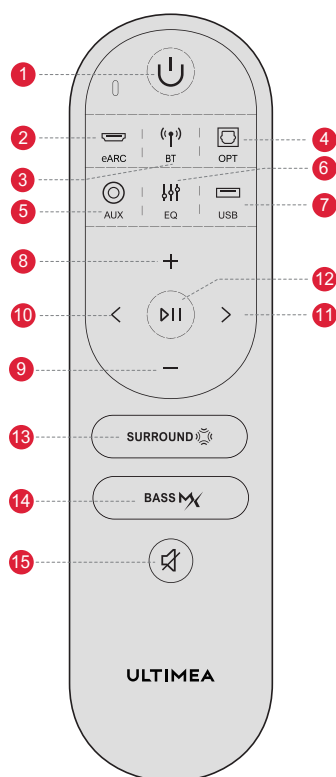


Pannello di controllo

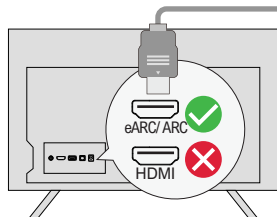
- 1 "U": Pulsante di accensione**
Premere per accendere / Tenere premuto per 3 secondi per spegnere.
- 2 "I": Modalità di ingresso**
Premere per cambiare canale: eARC-BT-OPT-AUX-USB.
- 3 "B": Bluetooth**
Premere per cambiare canale BT ed entrare in modalità di accoppiamento. Tenere premuto per 3 secondi per scollegare il dispositivo corrente e scegliere di connettersi manualmente al nuovo dispositivo sul cellulare / PC / TV (ID BT: Poseidon D60).
- 4 "−": Volume giù**
- 5 "+": Volume su**

Telecomando

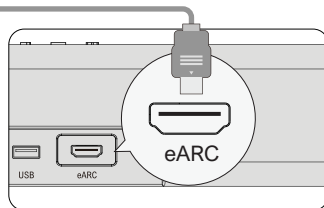
- 1 **“⏻”**: **Pulsante di accensione**
Premere per accendere / Tenere premuto per 3 secondi per spegnere.
- 2 **“eARC”**: **eARC**
Premere per passare al canale eARC.
- 3 **“⏪”**: **BT**
Premere per cambiare canale BT ed entrare in modalità di accoppiamento. Tenere premuto per 3 secondi per scollegare il dispositivo corrente e scegliere di connettersi manualmente al nuovo dispositivo sul cellulare / PC / TV (ID BT: Poseidon D60).
- 4 **“⏩”**: **OPT**
Premere per passare al canale OTTICO.
- 5 **“⦿”**: **AUX**
Premere per passare al canale AUX.
- 6 **“🎵”**: **EQ**
Premere per passare alla modalità Film, Dialogo, Musica; il display visualizza: “EQ 1”, “EQ 2”, “EQ 3”.
- 7 **“🔌”**: **USB**
Premere per passare al canale USB.
- 8 **“+”**: **Volume su**
- 9 **“-”**: **Volume giù**
- 10 **“<”**: **Precedente**
Modalità BT e USB: passa al brano precedente.
- 11 **“>”**: **Successivo**
Modalità BT e USB: passa al brano successivo.
- 12 **“⏸”**: **Riproduzione/Pausa**
Solo per le modalità BT e USB.
Modalità USB: Tenere premuto per 3 secondi per passare dalla riproduzione di un singolo loop alla riproduzione di un elenco di loop.
- 13 **“SURROUND”**: **Surround**
Premere per regolare il livello audio surround, il display mostrerà: “5f-1”, “5f 2”, “5f 1”.
- 14 **“BASS”**: **BASSMX**
Premere per regolare il livello dei bassi, il display visualizza: “b5-1”, “b5 2”, “b5 1”.
- 15 **“🔇”**: **Silenziamento / Recupero del volume.**



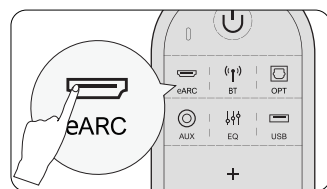
3 COLLEGAMENTO ALLA TV VIA eARC / ARC



Passi 1:
Collegare un'estremità del cavo HDMI alla porta eARC/ARC sul retro del televisore.



Passi 2:
Collegare quindi l'altra estremità alla porta eARC della soundbar.



Passi 3:
Premere il pulsante "eARC" sul telecomando per selezionare l'ingresso "eARC".

NOTA:

- 1 La porta HDMI del televisore deve supportare eARC per trasmettere il formato audio Dolby Atmos alla Soundbar.
Atmos: Se si sta guardando un film in formato Dolby Atmos, impostare l'uscita audio del televisore su Passo A:
Impostazioni TV > Home > Impostazioni > Suono > Uscita audio digitale > Pass Through
- DTS: Se si sta guardando un film in formato DTS, impostare l'uscita audio sul televisore su PCM:**
Impostazioni TV > Home > Impostazioni > Audio > Uscita audio digitale > PCM
- 2 **Se l'HDMI del televisore supporta solo l'ARC, impostare l'uscita audio del televisore su PCM:**
Impostazioni TV > Home > Impostazioni > Audio > Uscita audio digitale > PCM

Qual è la differenza tra: HDMI IN, HDMI ARC, HDMI eARC?

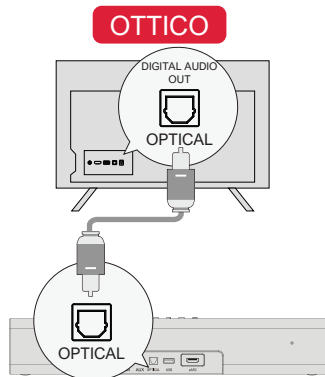
- 1 **HDMI IN** è un ingresso HDMI standard che consente di collegare dispositivi al televisore o al sistema audio. Supporta segnali audio e video, ma non supporta la funzionalità ARC (Audio Return Channel) o eARC (Enhanced Audio Return Channel).
- 2 **HDMI ARC** è una porta HDMI speciale che supporta la comunicazione bidirezionale tra il televisore e il sistema audio. Ciò significa che l'audio può essere inviato dal televisore al sistema audio e il sistema audio può inviare l'audio al televisore.
- 3 **HDMI eARC** (Enhanced Audio Return Channel) è una versione aggiornata di HDMI ARC che supporta formati audio di qualità superiore come Dolby Atmos e DTS:X.

Nota: Attivare la funzione "CEC" sul televisore.

Quando è collegato l'eARC/ARC, il telecomando del televisore può controllare contemporaneamente la soundbar e il televisore:

- 1 Accensione/spegnimento
- 2 Regolare il volume

4 COLLEGAMENTO ALLA TV VIA OTTICA / AUX

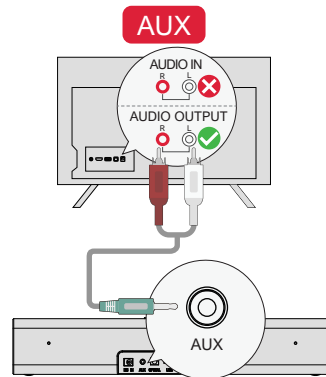


OPZIONE 1: OTTICO

NOTA:

- 1 Assicurarsi che la porta del televisore sia OPTICAL OUT.
- 2 Se l'audio proviene dagli altoparlanti interni del TV, disattivare o ridurre al minimo il volume del televisore.

In modalità ottica: Se non c'è suono: provare a impostare l'uscita audio del televisore su PCM:
Impostazioni TV > Home > Impostazioni > Suono > Uscita audio digitale > PCM



OPZIONE 2: AUX

NOTA:

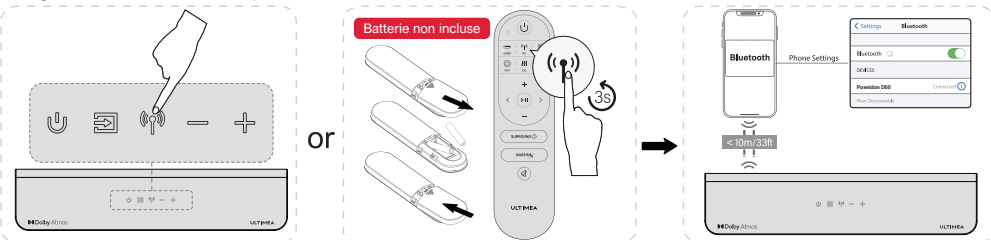
- 1 Collegare il cavo audio da 3,5 mm a RCA alla porta RCA AUDIO OUT del televisore.
- 2 Assicurarsi che il colore delle estremità del cavo corrisponda a quello delle porte del televisore.

5 CONNESSIONE AL BLUETOOTH

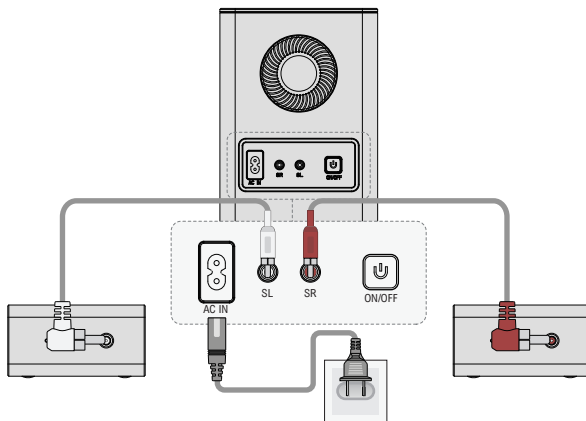
NOTA:

- 1 Premere il pulsante "BT" sulla soundbar o sul telecomando per accedere alla modalità Bluetooth.
- 2 Accedere alle impostazioni Bluetooth del telefono, trovare e selezionare "Poseidon D60" per collegare la soundbar.

Nota: se è già in modalità Bluetooth e collegato, tenere premuto il pulsante "BT" per 3 secondi per scollegare il dispositivo corrente e scegliere di collegarlo manualmente al nuovo dispositivo sul telefono cellulare / PC / TV.

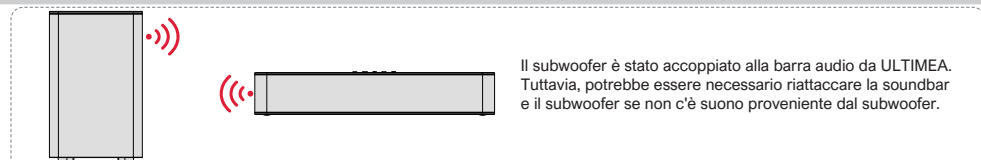


6 COLLEGAMENTO AL SUBWOOFER E AI DIFFUSORI SURROUND

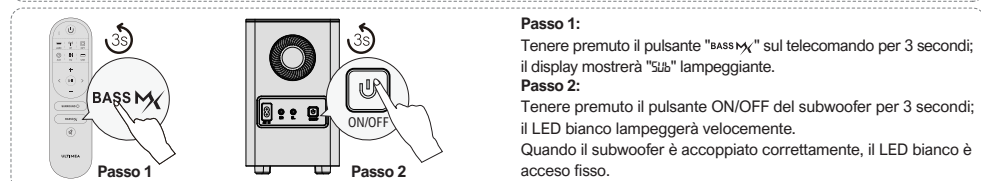


- 1 Utilizzare i cavi RCA-RCA da 6 m per collegare il subwoofer e i diffusori surround; prestare attenzione a far corrispondere le interfacce dello stesso colore dei diffusori surround con quelle corrispondenti del subwoofer e posizionare i diffusori surround di conseguenza.
- 2 Utilizzare il cavo di alimentazione per collegare il subwoofer e la porta di alimentazione.

7 SUBWOOFER ABBINATO



Il subwoofer è stato accoppiato alla barra audio da ULTIMEA. Tuttavia, potrebbe essere necessario riattaccare la soundbar e il subwoofer se non c'è suono proveniente dal subwoofer.



Passo 1:

Tenere premuto il pulsante "BASS" sul telecomando per 3 secondi; il display mostrerà "SUB" lampeggiante.

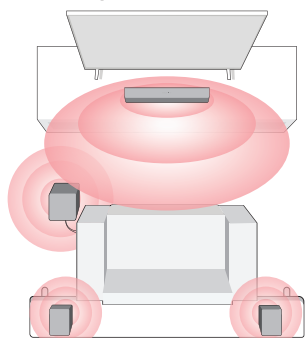
Passo 2:

Tenere premuto il pulsante ON/OFF del subwoofer per 3 secondi; il LED bianco lampeggerà velocemente. Quando il subwoofer è accoppiato correttamente, il LED bianco è acceso fisso.

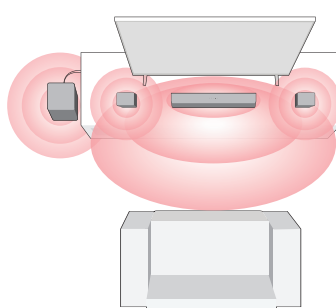
8 OPZIONE DI POSIZIONAMENTO

IT

Surround completo a 360° (Surround migliore)

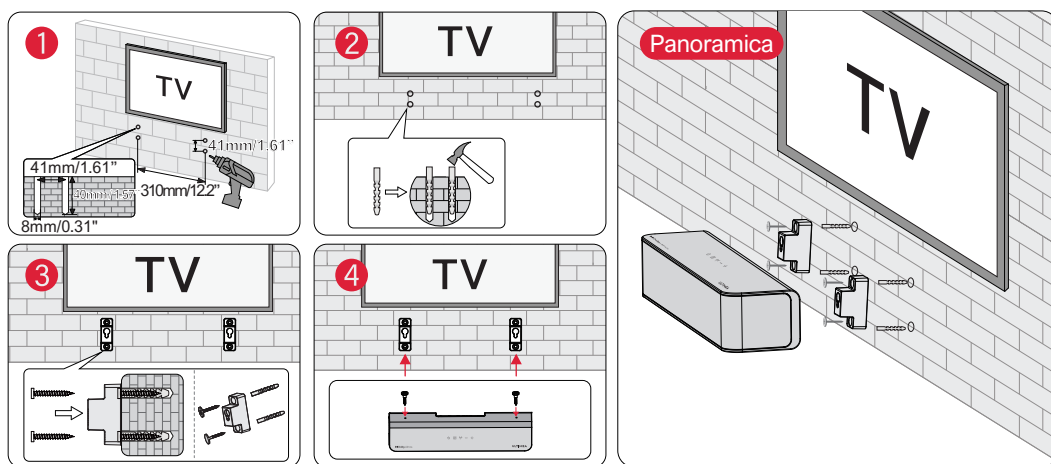


Surround anteriore



- 1 Per una migliore esperienza di ascolto, scegliere una delle due opzioni di collocazione mostrate nell'illustrazione precedente in base all'ambiente domestico.
- 2 La soundbar e i diffusori surround devono essere posizionati all'altezza delle orecchie o quasi.

9 INSTALLAZIONE A PARETE



Nota: Il montaggio a parete dei diffusori surround segue la stessa configurazione mostrata nelle immagini precedenti.

10 SPECIFICHE

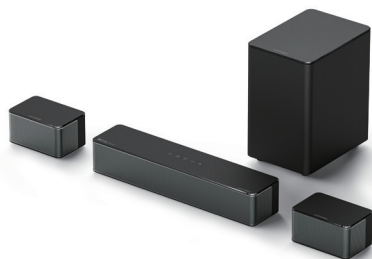
Numero modello	U2520
Alimentazione	AC 110-240V, ~50/60Hz
Driver della soundba	2,25" x 3 (soundbar) + 2,25" x 2 (Altoparlante surround) + 5,25" (subwoofer)
Risposta in frequenza	40Hz - 18kHz
Potenza in standby	<0.5W
Temperatura di funzionamento	0°C - 45°C/32°F - 113°F

Dimensioni e peso	
Soundbar	400(W) x 70(H) x 90(D)mm 15.7" x 2.8" x 3.5"
Subwoofer	155(W) x 244(H) x 215(D)mm 6.1" x 9.6" x 8.5"
Altoparlante surround	135(W) x 70(H) x 90 (D)mm 5.3" x 2.8" x 3.5"
Imballaggio	335(W) x 442(H) x 192(D)mm 13.1" x 17.4" x 7.5"
Peso netto	5.7kg / 12.6lbs
Peso lordo	6.3kg / 13.9lbs

ULTIMEA

Poseidon D60

Manual del usuario



Nº de modelo: U2520

ESTAMOS LISTOS PARA AYUDAR



support@ultimea.com

ES

¿Prefiere un tutorial en vídeo?

La configuración en el sitio web de ultimea guía el video, el Manual del usuario o la solución de problemas.



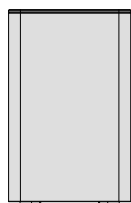
support.ultimea.com



@Ultimea_Official

+1 888-598-8875(US) Mon-Fri 9am-5pm(PST)
+49 89-628-25828(EU) Mon-Fri 9am-5pm(CET)

1 LISTA DE ACCESORIOS



Subwoofer



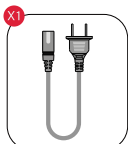
Soundbar



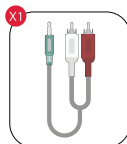
Altavoz Sonido x 2



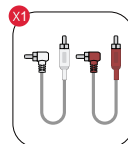
Adaptador de corriente



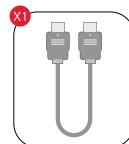
Cable de alimentación del subwoofer



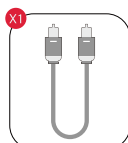
Cable de audio estéreo de 3,5 mm a RCA



Cable estéreo RCA a RCA (6m)



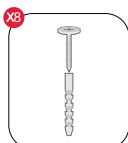
Cable eARC



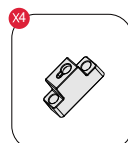
Cable digital óptico



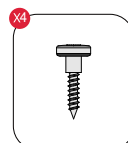
Mando a distancia



Kit de montaje en pared



Soporte de pared

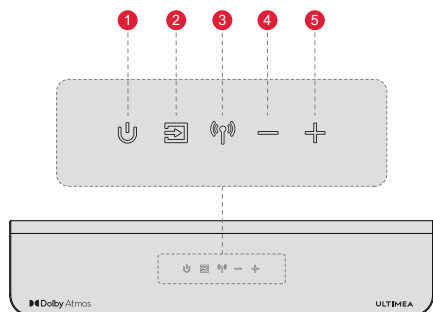


Tornillos de montaje en los altavoces



Manual del usuario

2 CONTROLES DE LA BARRA DE SONIDO

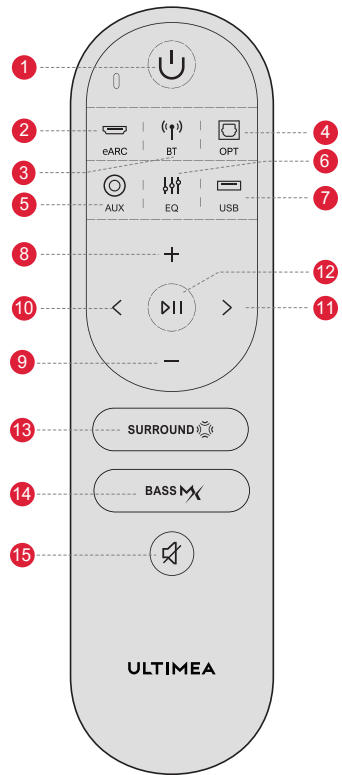


Panel de control

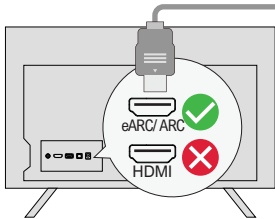
- 1 “⏻”:** Botón de encendido
Pulse para encender / Mantenga pulsado durante 3 segundos para apagar.
- 2 “📺”:** Modo de entrada
Pulse para cambiar de canal: eARC-BT-OPT-AUX-USB.
- 3 “📶”:** Bluetooth
Pulse para cambiar el canal BT y entrar en el modo de emparejamiento. Mantenga pulsado durante 3 segundos para desconectar el dispositivo actual y elija conectarse al nuevo dispositivo manualmente en su teléfono móvil / PC / TV (BT ID: Poseidon D60).
- 4 “-”:** Bajar volumen
- 5 “+”:** Subir volumen

Mando a distancia

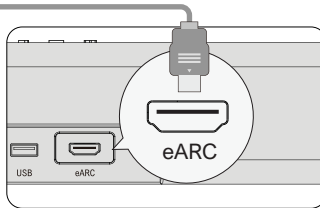
- 1 "U": **Botón de encendido**
Pulse para encender / Mantenga pulsado durante 3 segundos para apagar.
- 2 "eARC": **eARC**
Pulse para cambiar al canal eARC.
- 3 "BT": **BT**
Pulse para cambiar el canal BT y entrar en el modo de emparejamiento. Mantenga pulsado durante 3 segundos para desconectar el dispositivo actual y elija conectarse al nuevo dispositivo manualmente en su teléfono móvil / PC / TV (BT ID: Poseidon D60).
- 4 "OPT": **OPT**
Pulse para cambiar al canal OPTICAL.
- 5 "AUX": **AUX**
Pulse para cambiar al canal AUX.
- 6 "EQ": **EQ**
Pulse para cambiar entre los modos Película, Diálogo, Música, la pantalla mostrará: "E90 1", "E902", "E903".
- 7 "USB": **USB**
Pulse para cambiar al canal USB.
- 8 "+": **Subir volumen**
- 9 "-": **Bajar volumen**
- 10 "<": **Anterior**
Modo BT y USB: saltar a la pista anterior.
- 11 ">": **Siguiente**
Modo BT y USB: saltar a la pista siguiente.
- 12 "⏮": **Reproducir/Pausa**
Sólo para los modos BT y USB.
Modo USB: Mantenga pulsado durante 3 segundos para cambiar entre reproducción de bucle simple y reproducción de bucle de lista.
- 13 "SURROUND": **Surround**
Presione para ajustar el volumen del sonido envolvente, la pantalla mostrará: "5r- 1", "5r 0", "5r 1".
- 14 "BASS": **BASSMX**
Pulse para ajustar el nivel de graves, la pantalla mostrará: "b5- 1", "b5 0", "b5 1".
- 15 "🔇": **Silenciamiento / Recupero del volumen.**



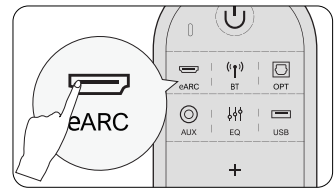
3 CONECTAR A LA TV MEDIANTE eARC / ARC



Pasos 1:
Conecta un extremo del cable HDMI al puerto eARC/ARC de la parte posterior de tu televisor



Pasos 2:
A continuación, conecte el otro extremo en el puerto eARC de la barra de sonido.



Pasos 3:
Pulse el botón "eARC" del mando a distancia para seleccionar la entrada "eARC".

NOTA:

1 El puerto HDMI del televisor debe ser compatible con eARC para transmitir el formato de audio Dolby Atmos a la barra de sonido.

Atmos: Si está viendo una película en formato Dolby Atmos, ajuste la salida de audio del televisor en Pass Through:

Ajustes TV > Inicio > Ajustes > Sonido > Salida de audio digital > Pass Through

DTS: Si está viendo una película en formato DTS, configure la salida de audio del televisor como PCM:

Ajustes TV > Inicio > Ajustes > Sonido > Salida de audio digital > PCM

2 Si el HDMI de su televisor sólo admite ARC, ajuste la salida de audio de su televisor a PCM:

Ajustes TV > Inicio > Ajustes > Sonido > Salida de audio digital > PCM

Cuál es la diferencia entre: HDMI IN, HDMI ARC, HDMI eARC?

1 **HDMI IN** es una entrada HDMI estándar que permite conectar dispositivos al televisor o al sistema de audio. Admite señales de audio y vídeo, pero no admite la funcionalidad de canal de retorno de audio (ARC) o canal de retorno de audio mejorado (eARC).

2 **HDMI ARC** es un puerto HDMI especial que admite la comunicación bidireccional entre el televisor y el sistema de audio. Esto significa que el audio se puede enviar desde el televisor al sistema de audio, y el sistema de audio puede enviar audio de vuelta al televisor.

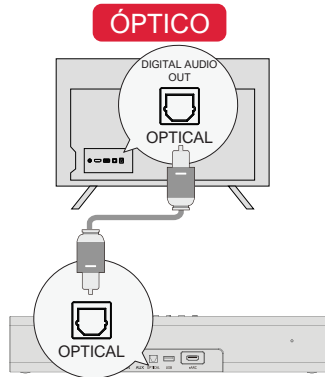
3 **HDMI eARC** (canal de retorno de audio mejorado) es una versión actualizada de HDMI ARC que admite formatos de audio de mayor calidad, como Dolby Atmos y DTS:X.

Nota: Active la función "CEC" en su televisor.

Cuando eARC/ARC está conectado, el mando a distancia del televisor puede controlar la barra de sonido y el televisor simultáneamente:

- 1 Encender/apagar
- 2 Ajustar el volumen

4 CONEXIÓN AL TELEVISOR VÍA ÓPTICA / AUX

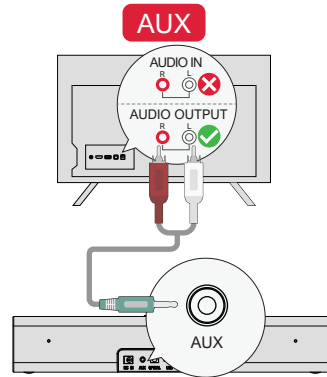


OPCIÓN 1: ÓPTICO

NOTA:

- 1 Asegúrese de que el puerto del televisor es OPTICAL OUT.
- 2 Si el audio procede de los altavoces internos del televisor, silencie o reduzca el volumen del televisor.

En modo óptico: Si no hay sonido: prueba a configurar la salida de audio del televisor en PCM:
Ajustes TV > Inicio > Ajustes > Sonido > Salida Audio Digital > PCM



OPCIÓN 2: AUX

NOTA:

- 1 Conecte el cable de audio de 3,5 mm a RCA al puerto RCA AUDIO OUT de su televisor.
- 2 Asegúrese de que el color de los extremos del cable coincide con el color de los puertos del televisor.

5 CONECTAR A BLUETOOTH

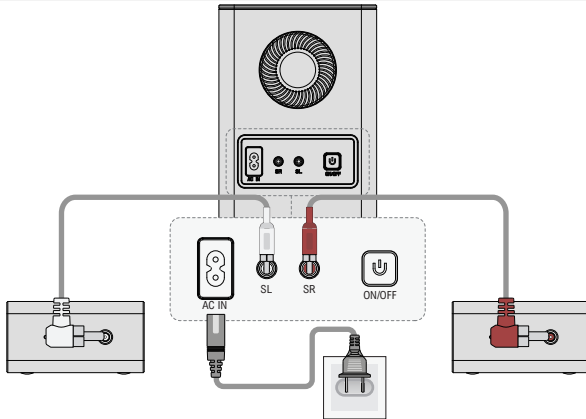
NOTA:

- 1 Pulse el botón "BT" en la barra de sonido o en el mando a distancia para entrar en el modo Bluetooth.
- 2 Vaya a la configuración de Bluetooth en su teléfono, busque y seleccione "Poseidon D60" para conectar la barra de sonido.

Nota: Si ya está en el modo Bluetooth y conectado, mantenga pulsado el botón "BT" durante 3 segundos para desconectar el dispositivo actual y elegir conectarse al nuevo dispositivo manualmente en su teléfono móvil / PC / TV.

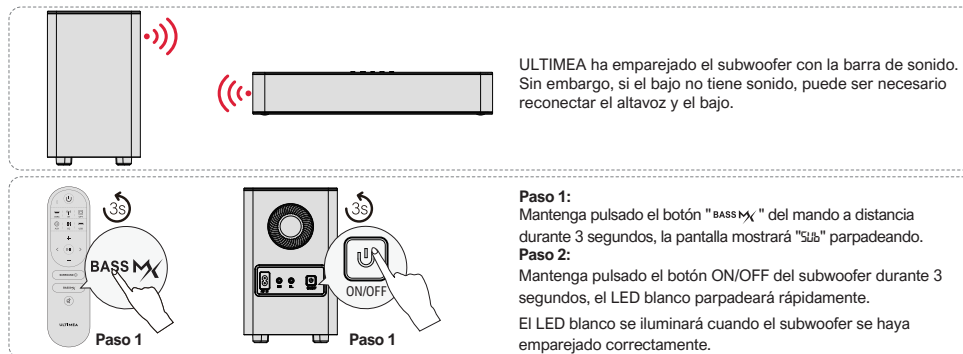


6 CONECTE EL SUBWOOFER Y LOS ALTAVOCES SURROUND



- 1 Utilice los cables RCA-RCA de 6 m para conectar el subwoofer y los altavoces de sonido envolvente; preste atención a que las interfaces del mismo color de los altavoces de sonido envolvente coincidan con las correspondientes del subwoofer y coloque los altavoces de sonido envolvente en consecuencia.
- 2 Utilice el cable de alimentación para conectar el subwoofer y el puerto de alimentación.

7 SUBWOOFER EMPAREJADO

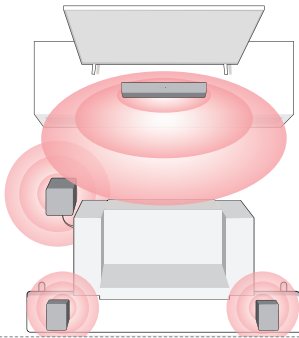


ULTIMEA ha emparejado el subwoofer con la barra de sonido. Sin embargo, si el bajo no tiene sonido, puede ser necesario reconectar el altavoz y el bajo.

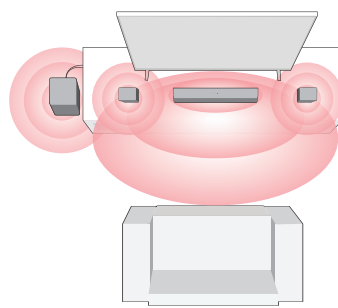
- Paso 1:** Mantenga pulsado el botón "BASS MAX" del mando a distancia durante 3 segundos, la pantalla mostrará "Sub" parpadeando.
- Paso 2:** Mantenga pulsado el botón ON/OFF del subwoofer durante 3 segundos, el LED blanco parpadeará rápidamente. El LED blanco se iluminará cuando el subwoofer se haya emparejado correctamente.

8 OPCIÓN DE COLOCACIÓN

Full 360° Surround (Mejor envolvente)

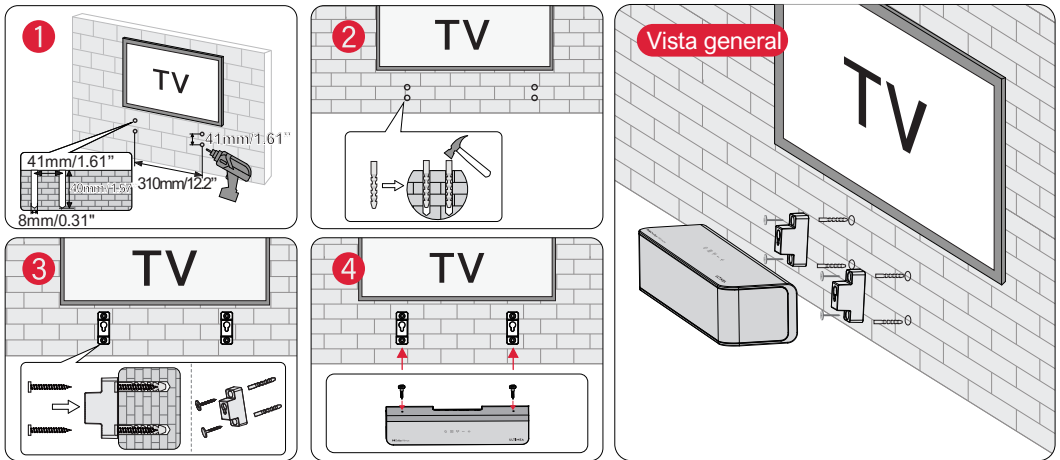


Envolvente frontal



- 1 Para disfrutar de una mejor experiencia auditiva, elija una de las dos opciones de colocación que se muestran en la ilustración anterior en función del entorno de su hogar.
- 2 La barra de sonido y los altavoces surround deben colocarse a la altura del oído o cerca de él.

9 INSTALACIÓN EN PARED



Nota: El montaje mural de los altavoces de sonido envolvente sigue la misma configuración que se muestra en las imágenes anteriores.

10 ESPECIFICACIONES

Modelo	U2520
Fuente de alimentación	AC 110-240V, ~50/60Hz
Transductores Soundbar	2,25" x 3 (Soundbar) + 2,25" x 2 (Surround) + 5,25" (Subwoofer)
Respuesta en frecuencia	40Hz - 18kHz
Potencia en espera	<0.5W
Temperatura de funcionamiento	0°C - 45°C/32°F - 113°F

Dimensiones y Peso	
Barra de sonido	400(W) x 70(H) x 90(D)mm 15.7" x 2.8" x 3.5"
Subwoofer	155(W) x 244(H) x 215(D)mm 6.1" x 9.6" x 8.5"
Altavoz surround	135(W) x 70(H) x 90 (D)mm 5.3" x 2.8" x 3.5"
Embalaje	335(W) x 442(H) x 192(D)mm 13.1" x 17.4" x 7.5"
Peso neto	5.7kg / 12.6lbs
Peso bruto	6.3kg / 13.9lbs

ULTIMEA

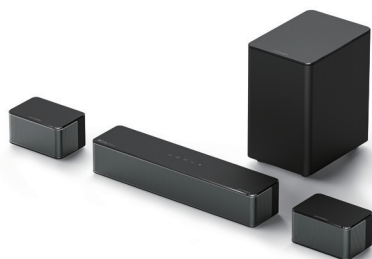
Poseidon D60

ユーザーマニュアル

ご対応させていただきます



support@ultimea.com



モデルNo: U2520

ビデオチュートリアル
をご希望ですか?

ULTIMEA Webサイトのセットアップ
ガイドビデオ、ユーザーマニュアル、
またはトラブルシューティング。

@Ultimea_Official

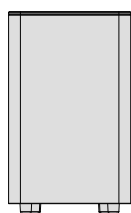


support.ultimea.com

JP

+1 888-598-8875(US) Mon-Fri 9am-5pm(PST)
 +49 89-628-25828(EU) Mon-Fri 9am-5pm(CET)

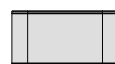
1 アクセサリーリスト



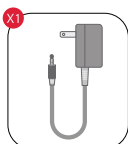
サブウーファー サラウンド



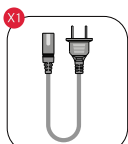
サウンドバー



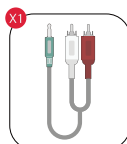
スピーカー ×2 台



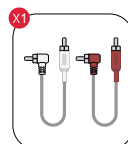
電源アダプター



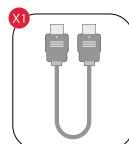
サブウーファー
電源ケーブル



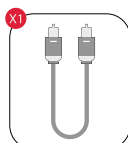
ステレオ3.5mm-RCAオ
ディオケーブル



ステレオRCA-RCA
ケーブル (6m)



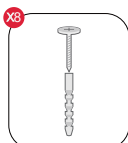
eARCケーブル



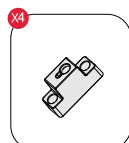
光デジタルケーブル



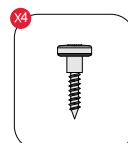
リモコン



壁掛けキット



壁掛け用ブラケット

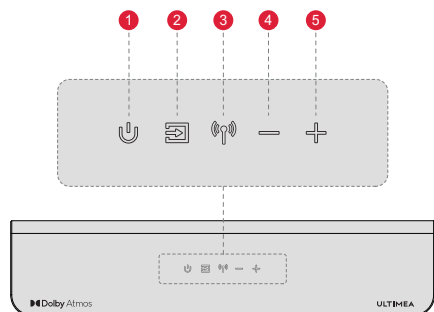


スピーカーの取り
付けネジ



ユーザーマニュアル

2 "サウンドバーの操作方法

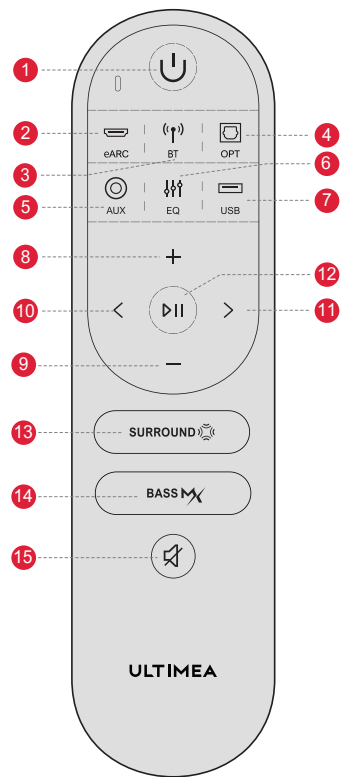


コントロールパネル

- ① “” : 電源ボタン
押すと電源が入ります / 3秒間長押しすると電源が切れます。
- ② “” : 入力モード
を押すとチャンネルが切り替わります: アークビット-オプト-オー-ユーエスピー。
- ③ “” : ブルートゥース
を押してBTチャンネルを切り替え、ペアリングモードに入ります。3秒間押し続けると、現在のデバイスが切断され、携帯電話/PC/TV (BT ID: Poseidon D60) で新しいデバイスに手動で接続することを選択します。
- ④ “” : ボリュームダウン
- ⑤ “” : ボリュームアップ

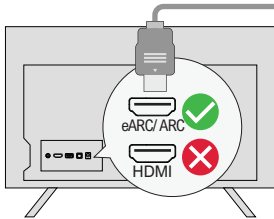
リモートコントロール

- 1 “**⏻**” :電源ボタン
押すと電源が入る/3秒長押しすると電源が切れる。
- 2 “**⏮**” : eARC (イアーク)
押すとeARCチャンネルに切り替わります。
- 3 “**(P)**” : BT
を押してBTチャンネルを切り替え、ペアリングモードに入ります。3秒間押し続けると、現在のデバイスが切断され、携帯電話/PC/TV (BT ID: Poseidon D60) で新しいデバイスに手動で接続することを選択します。
- 4 “**⏭**” : OPT
OPTICAL チャンネルに切り替わります。
- 5 “**⦿**” : AUX
を押すと、AUXチャンネルに切り替わります。
- 6 “**⚙**” : EQ
を押して、映画、対話、音楽モードを切り替えると、ディスプレイに表示されます: 「EQ1」、「EQ2」、「EQ3」と表示されます。
- 7 “**⏮**” : USB
を押して、USBチャンネルに切り替えます。
- 8 “**+**” : ボリュームアップ
- 9 “**-**” : ボリュームダウン
- 10 “**<**” : 前へ
BTおよびUSBモード: 前のトラックへスキップします。
- 11 “**>**” : 次へ
BTおよびUSBモード: 次のトラックへスキップします。
- 12 “**⏮**” : 再生/一時停止
BTモード、USBモードのみ。
USBモード: 3秒間長押しすると、シングルループ再生とリストループ再生が切り替わります。
- 13 “**SURROUND**” : Surround
を押すとサラウンド音の量が調整され、ディスプレイに表示されます: “5F-1”, “5F 0”, “5F 1”.
- 14 “**BASS**” : BASSMX
を押して低音レベルを調整すると、ディスプレイに表示されます: “b5-1”, “b5 0”, “b5 1”.
- 15 “**🔇**” : ミュート / 音量を回復する。

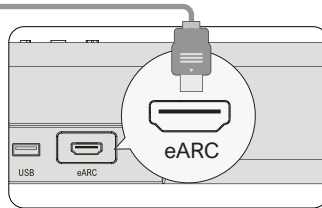


JP

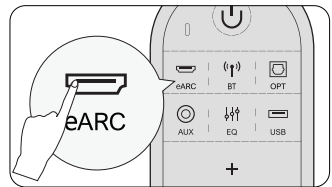
3 eARC / ARCでテレビに接続する



ステップ1:
HDMIケーブルの一端をテレビ背面のeARC/ARCポートに接続します。



ステップ2:
次に、もう一方の端をサウンドバーのeARCポートに接続します。



ステップ3:
リモコンの「eARC」ボタンを押し、「eARC」入力を選択します。

注意:

1 Dolby Atmosオーディオ・フォーマットをサウンドバーに伝送するには、テレビのHDMIポートがeARCに対応している必要があります。

Atmos: Dolby Atmos形式の映画を視聴する場合は、テレビの音声出力をPass Throughに設定してください:

テレビの設定>ホーム>設定>サウンド>デジタル音声出力>デジタル音声出力>パススルー

DTS: DTS形式の映画を視聴する場合は、テレビの音声出力をPCMに設定してください:

テレビの設定>ホーム>設定>サウンド>デジタル音声出力>PCM

2 テレビのHDMIがARCにしか対応していない場合は、テレビの音声出力をPCMに設定してください:

テレビの設定>ホーム>設定>サウンド>デジタル音声出力>PCM

何が違うのですか? HDMI IN、HDMI ARC、HDMI eARCの違いは?

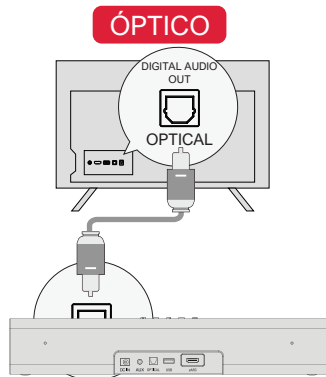
- 1 **HDMI IN** は、テレビやオーディオシステムに機器を接続するための標準的なHDMI入力です。オーディオ信号とビデオ信号に対応していますが、オーディオリターンチャンネル (ARC) やエンハンストオーディオリターンチャンネル (eARC) 機能には対応していません。
- 2 **HDMI ARC** は、テレビとオーディオシステム間の双方向通信をサポートする特別なHDMIポートです。テレビからオーディオシステムに音声を送り、オーディオシステムからテレビに音声を返すことができます。
- 3 **HDMI eARC** (Enhanced Audio Return Channel) は、HDMI ARCのアップデート版で、Dolby AtmosやDTS:Xなど、より高品質なオーディオフォーマットに対応しています。

注: テレビの「CEC」機能をオンにしてください。

eARC/ARCを接続した場合、テレビのリモコンでサウンドバーとテレビを同時に操作することができます:

- 1 電源のオン/オフ
- 2 音量調整

4 オプティカル/AUXでテレビに接続

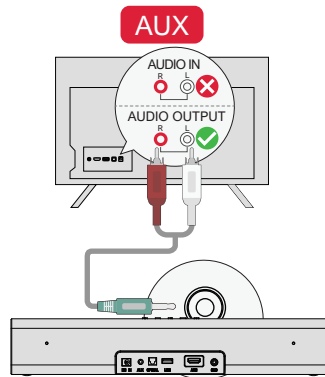


オプション1: オプティカル

注意事項:

- 1 テレビのポートがOPTICAL OUTであることを確認してください。
- 2 音声がテレビ内蔵のスピーカーから聞こえている場合はテレビのスピーカーから音が出ている場合は、テレビの音量を小さくするか、ミュートにしてください。

オプティカルモードの場合: 音が出ない場合: テレビの音声出力をPCMに設定してみてください:
テレビの設定>ホーム>設定>サウンド>デジタルオーディオ出力>PCM



オプション2: AUX

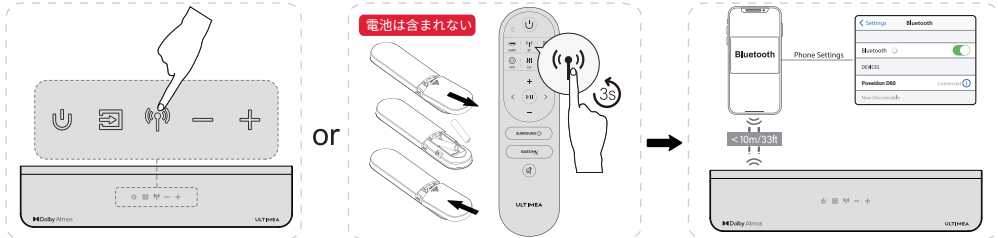
注意事項:

- 1 3.5mm-RCAオーディオケーブルをテレビのRCA AUDIO OUTポートに接続します。
- 2 ケーブルの端の色がテレビのポートの色と一致していることを確認してください。

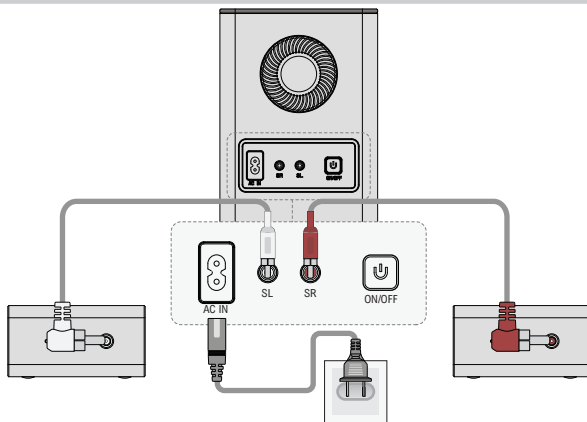
5 ブルートゥースに接続

注意

- 1 サウンドバーまたはリモコンの "P" ボタンを押してBluetoothモードに入ります。
 - 2 携帯電話のBluetooth設定に移動し、サウンドバーを接続するために "Poseidon D60" を見つけて選択します。
- 注: すでにBluetoothモードで接続されている場合は、"P" ボタンを3秒間長押しして、現在のデバイスを切断し、携帯電話/PC/テレビで手動で新しいデバイスに接続することを選択します。

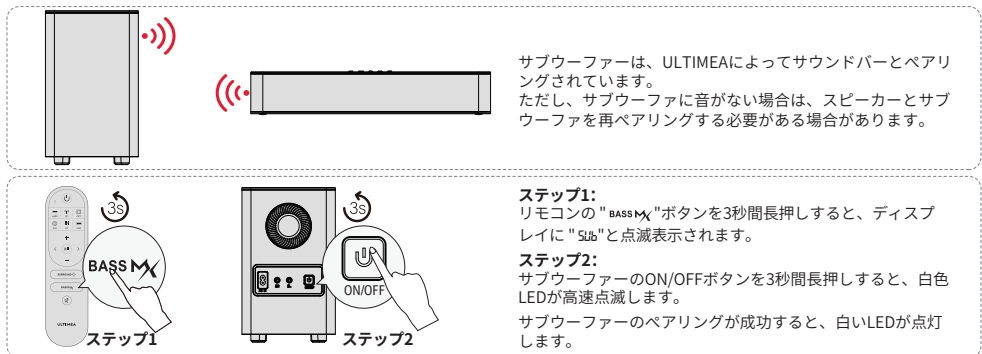


6 サブウーファーとサラウンドスピーカーに接続する



- 1 サブウーファーとサラウンドスピーカーの接続には、6mのRCA-RCAケーブルを使用してください。サラウンドスピーカーの同じ色のインターフェースとサブウーファーの対応するものを一致させ、それに応じてサラウンドスピーカーを配置することに注意してください。
- 2 電源ケーブルを使用して、サブウーファーと電源ポートを接続します。

7 ペアサブウーファー

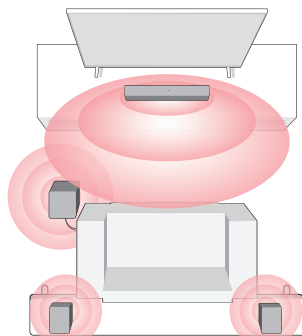


サブウーファーは、ULTIMEAによってサウンドバーとペアリングされています。ただし、サブウーファに音がない場合は、スピーカーとサブウーファを再ペアリングする必要がある場合があります。

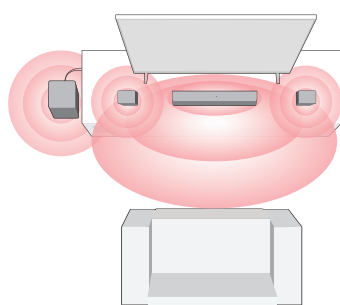
- ステップ1:**
リモコンの "BASS Mx" ボタンを3秒間長押しすると、ディスプレイに "Sub" と点滅表示されます。
- ステップ2:**
サブウーファーのON/OFFボタンを3秒間長押しすると、白色LEDが高速点滅します。
サブウーファーのペアリングが成功すると、白いLEDが点灯します。

8 プレースメントオプション

360°フルサラウンド (より良いサラウンド)

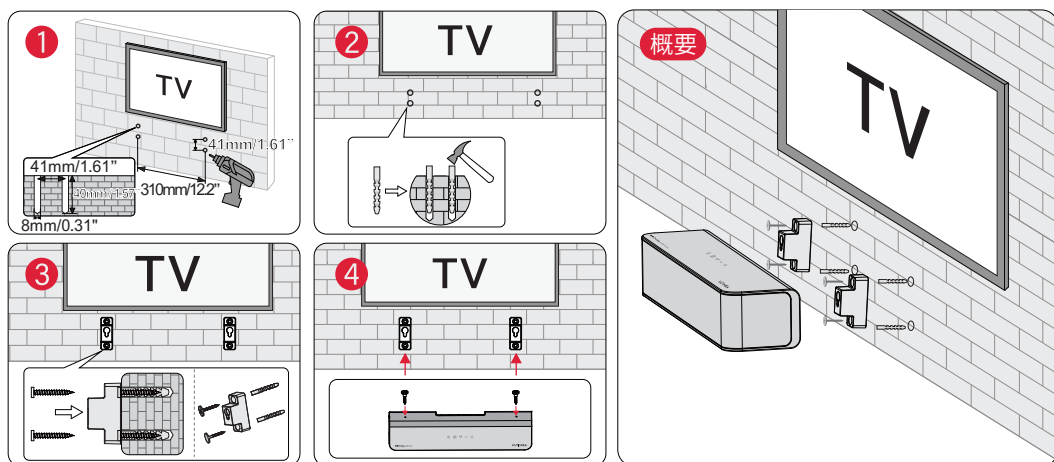


フロントサラウンド



- 1 より良いリスニング体験のために、ご家庭の環境に応じて、上図の2つの配置オプションのうち1つをお選びください。
- 2 サウンドバーとサラウンドスピーカーは、耳の高さかその近くに設置するのが望ましいです。"

9 壁掛け設置



注意: サラウンドスピーカーの壁掛けは、上の写真と同じ構成に従います。

10 つの仕様

モデル	U2520
電源	AC 110-240V, ~50/60Hz
サウンドバードライバー	2.25インチ×3 (サウンドバー) + 2.25インチ×2 (サラウンド・スピーカー) + 5.25インチ (サブウーファー)
周波数特性	40Hz - 18kHz
スタンバイ電力	<0.5W
動作温度	0°C - 45°C/32°F - 113°F

外形寸法と重量

サウンドバー	400(W) x 70(H) x 90(D)mm	15.7インチ x 2.8インチ x 3.5インチ
サブウーファー	155(W) x 244(H) x 215(D)mm	6.1インチ x 9.6インチ x 8.5インチ
サラウンド・スピーカー	135(W) x 70(H) x 90(D)mm	5.3インチ x 2.8インチ x 3.5インチ
パッケージ	335(W) x 442(H) x 192(D)mm	13.1インチ x 17.4インチ x 7.5インチ
重量	5.7kg / 12.6lbs	
総重量	6.3kg / 13.9lbs	

SAFETY INSTRUCTIONS

Please read this user manual carefully and save it for future reference.

Do not make unauthorized alterations to the product, doing so may compromise safety, regulatory compliance, system performance, and may void the warranty.

- Avoid dropping.
- Do not disassemble.
- Do not submerge in water
- Avoid extreme temperatures.
- Do not use the device outdoors during thunderstorms.
- Use original or certified cables.
- Do not place dangerous items on top of this device (e.g. liquid filled objects, lit candles).
- Clean with a dry, soft lint-free cloth. Do not use any corrosive cleaner or oil.
- To avoid hearing damage, do not listen for extended periods at high volume.
- Do not expose the batteries to extreme heat sources such as direct sunlight or open flames.
- The ideal operating temperature for this product and its accessories is between 41°F/5°C and 95°F/35°C.
- The adapter should be installed near the device and should be easily accessible.
- Do not use this product in environments of extreme heat or cold. Never expose this device to strong sunshine or wet environments.

PROPER DISPOSAL INSTRUCTIONS



This mark shown on the product or its packaging, indicates that this product should not be disposed of with other household waste at the end of its working life.

To prevent possible harm to the environment or human health from uncontrolled waste disposal, please separate this from other types of wastes and recycle it responsibly to promote the sustainable reuse of material resources.

Waste Electrical & Electronic Equipment

Household user should contact either the retailer where they purchased this product, or their local government office, for details of where and how they can take this item for environmentally safe recycling.

Business users should contact their suppliers and check the terms and conditions of the purchase contract. This product should not be mixed with other commercial wastes for disposal.

FCC REGULATORY COMPLIANCE

NOTE: This equipment has been tested and found to comply with the limits for a Class B digital device, pursuant to part 15 of the FCC Rules. These limits are designed to provide reasonable protection against harmful interference in a residential installation. This equipment generates uses and can radiate radio frequency energy and, if not installed and used in accordance with the instructions, may cause harmful interference to radio communications.

However, there is no guarantee that interference will not occur in a particular installation. If this equipment does cause harmful interference to radio or television reception, which can be determined by turning the equipment off and on, the user is encouraged to try to correct the interference by one or more of the following measures:

- Reorient or relocate the receiving antenna.
- Increase the separation between the equipment and the receiver.
- Connect the equipment to an outlet on a circuit different from that to which the receiver is connected.
- Consult the dealer or an experienced radio/TV technician for help.

Any changes or modifications not expressly approved by the party responsible for compliance could void the user's authority to operate the equipment.

This device complies with Part 15 of the FCC Rules.

Operation is subject to the following two conditions:

- (1) this device may not cause harmful interference.
- (2) this device must accept any interference received, including interference that may cause undesired operation.

This equipment complies with FCC radiation exposure limits set forth for an uncontrolled environment. This equipment should be installed and operated with a minimum distance of 20cm between the radiator & your body. This transmitter must not be co-located or operating in conjunction with any other antenna or transmitter.

ISED WARNINGS

This device contains licence-exempt transmitter(s)/ receiver (s) that comply with Innovation, Science and Economic Development Canada's licence-exempt RSS (s). Operation is subject to the following two conditions:

- (1) This device may not cause interference.
- (2) This device must accept any interference, including interference that may cause undesired operation of the device.

L'émetteur/récepteur exempt de licence contenu dans le présent appareil est conforme aux CNR d'Innovation, Sciences et Développement économique Canada applicables aux appareils radio exempts de licence. L'exploitation est autorisée aux deux conditions suivantes:

- (1) L'appareil ne doit pas produire de brouillage;
- (2) L'appareil doit accepter tout brouillage radioélectrique subi, même si le brouillage est susceptible d'en compromettre le fonctionnement.

This equipment complies with IC exposure limits set forth for an uncontrolled environment. This equipment shall be installed and operated with a minimum distance of 20cm between the radiator & body.

Cet équipement est conforme aux limites d'exposition IC définies pour un environnement non contrôlé. Cet équipement doit être installé et utilisé avec une distance minimale de 20cm entre le radiateur et la carrosserie.

Declaration of Conformity

We (Manufacturer is responsible for this declaration)
Dyanic (Shenzhen) Technology Limited
(Company name)

20th Floor, Building 4, Tianan Cloud Park, Bantian St.,
Longgang District Shenzhen, China 518000
(Company address)

Declare under our sole responsibility that the product
Trade Mark: ULTIMEA

Product Name: 5.1 Channel Virtual Atmos Soundbar
Model No.: U2520

To which this declaration relates is in conformity with
the essential
requirement set out in the Council Directive on the
Approximation of the laws of the Member States
relating to RED Directive (2014/53/EU) & RoHS (2011/
65/ EU) product is responsible to affix CE marking, the
following standards were applied:

EN 55032:2015/A11:2020
EN 55035:2017/A11:2020
ENIEC 61000-3-2:2019
EN 61000-3-3:2013/A1:2019
ETSIEN 301 489-1 V2.2.3(2019-11)
ETSIEN 301 489-17 V3.2.4(2020-09)
EN 300 328 V2.2.2(2019-07)
EN 50663:2017
ENIEC 62368-1:2020+A11:2020
IEC62321-3-1:2013
IEC 62321-4:2013+A1:2017
IEC 62321-5:2013
IEC 62321-6:2015
IEC 62321-7-1:2015
IEC 62321-7-2:2017
IEC 62321-8:2017

Full Name: Yoyo.Yu

Position: Approbation Manager

Signature: 

Place/Date: Shenzhen,China/Dec.25-2022



Manufactured under license from Dolby Laboratories. Dolby, Dolby Audio, Dolby Atmos, Dolby Vision, and the double-D symbol are trademarks of Dolby.Laboratories.

ULTIMEA

5.1 Channel Virtual Atmos Soundbar
Model No.: U2520



SHUNSHUN GmbH
Römeräcker 9 Z2021,
76351 Linkenheim-Hochstetten, Germany



UK Crossborder limited
7 Bell Yard London WC2A 2JR, UK United Kingdom

Made in China

Manufacturer: Dyanic (Shenzhen) Technology Limited
Address: 20th Floor, Building 4, Tianan Cloud Park, Bantian St.,
Longgang District, Shenzhen, China 518000

If you need our support, kindly reach out to our
service team. We are always glad to help.

 +1 888-598-8875 (US)
Mon-Fri 9am-5pm (PST)
+49 89-628-25828 (EU)
Mon-Fri 9am-5pm (CET)

 support@ultimea.com

 support.ultimea.com



@ultimea_official