

# ULTIMEA

**HDMI™**  
HIGH DEFINITION MULTIMEDIA INTERFACE

**Bluetooth®**



## ***User Manual***

### **Poseidon D50**

**EN:** User Manual

**DE:** Benutzerhandbuch

**JP:** ユーザーマニュアル

**FR:** Manuel de l'Utilisateur

**IT:** Manuale d'uso

**ES:** Manual del usuario

Model No.: U2500

Poseidon D50 5.1 Channel Virtual Surround Soundbar

# Contents

<b>01</b>	<b>User Manual</b>	<b>English</b>
	Connection and Installation .....	02
<b>05</b>	<b>Benutzerhandbuch</b>	<b>Deutsch</b>
	Anschluss und Installation .....	06
<b>09</b>	<b>ユーザーマニュアル</b>	<b>日本語</b>
	接続と設置 .....	10
<b>13</b>	<b>Mode d'Emploi</b>	<b>Français</b>
	Raccordement et installation .....	14
<b>17</b>	<b>Manuale d'uso</b>	<b>Italiano</b>
	Connessione e installazione .....	18
<b>21</b>	<b>Manual del usuario</b>	<b>Español</b>
	Conexión e instalación .....	22

# User Manual

WE ARE  
READY  
TO HELP



support@ultimea.com



Model No.: U2500

### Prefer video tutorial?

Setup guidance video, or USER MANUAL on ULTIMEA website.

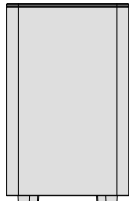
@ultimea\_official



support.ultimea.com

+1 888-598-8875(US) Mon-Fri 9am-5pm(PST)  
 +49 89-628-25828(EU) Mon-Fri 9am-5pm(CET)

## 1 ACCESSORIES LIST



Subwoofer



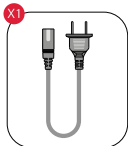
Soundbar



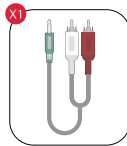
Surround Speaker × 2



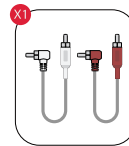
Power Adaptor



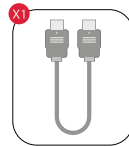
Subwoofer Power Cable



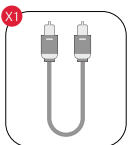
Stereo 3.5mm to RCA Audio Cable



Stereo RCA to RCA Cable(6m)



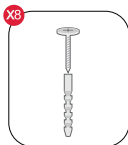
HDMI Cable



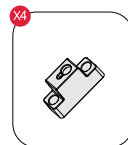
Digital Optical Cable



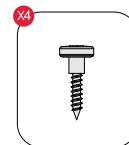
Remote Control



Wall Mounted Kit



Wall Bracket

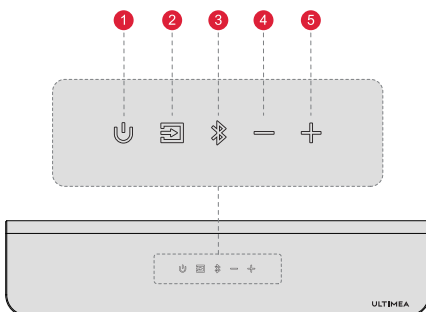


Mounting Screw on Speakers



User Manual

## 2 SOUNDBAR CONTROLS

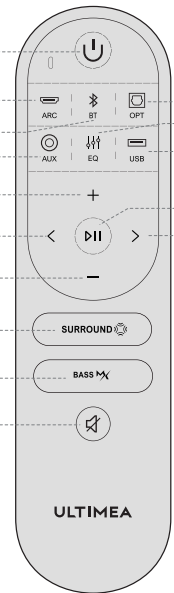


### Control Panel

- 1 **“⏻”**: **Power Button**  
Press to power on / Hold for 3 seconds to power off.
- 2 **“📺”**: **Input Mode**  
Press to switch channels: ARC-OPT(OPTICAL)-BT-AUX-USB.
- 3 **“📶”**: **Bluetooth**  
Press to switch to BT channel and enter pairing mode. Hold for 3 seconds to disconnect current device and choose to connect to a new device manually on your mobile phone / PC / TV (BT ID: Poseidon D50).
- 4 **“—”**: **Volume Down**
- 5 **“+”**: **Volume Up**

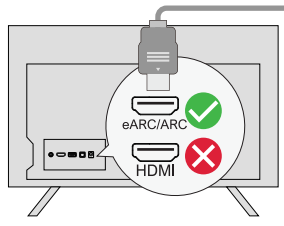
### Remote Control

- 1 "U": **Power Button**  
Press to power on / Hold for 3 seconds to power off.
- 2 "ARC": **ARC**  
Press to switch to HDMI ARC channel.
- 3 "BT": **BT**  
Press to switch to BT channel and enter pairing mode.  
Hold for 3 seconds to disconnect current device and choose to connect to a new device manually on your mobile phone / PC / TV (BT ID: Poseidon D50).
- 4 "OPT": **OPT**  
Press to switch to OPTICAL channel.
- 5 "AUX": **AUX**  
Press to switch to AUX channel.
- 6 "EQ": **EQ**  
Press to switch among Movie, Dialogue, Music mode, the display will show: "EQ 1", "EQ 2", "EQ 3".
- 7 "USB": **USB**  
Press to switch to USB channel.

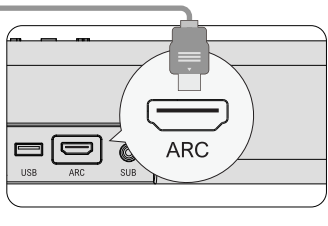


- 8 "+": **Volume Up**
- 9 "-": **Volume Down**
- 10 "<": **Previous**  
For BT and USB mode only:  
Skip to previous track.
- 11 ">": **Next**  
BT and USB mode: Skip to next track.
- 12 "▶||": **Play/ Pause**  
For BT and USB mode only.  
USB mode: Hold for 3 seconds to switch between single loop playback and list loop playback.
- 13 "SURROUND": **SURROUND**  
Press to adjust surround sound level, the display will show: "5F-1", "5F 0", "5F 1".
- 14 "BASS MX": **BASSMX™**  
Press to adjust bass level, the display will show: "b5-3", "b5-2", "b5-1", "b5 0", "b5 1".
- 15 "Mute/Recover": **Mute / Recover the volume.**

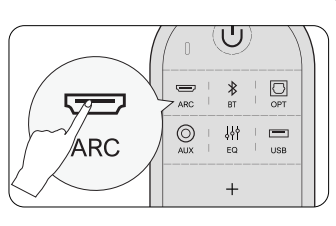
## 3 CONNECT TO TV VIA ARC



**Steps 1:**  
Connect one end of the HDMI cable to the eARC / ARC port on the back of your TV.



**Steps 2:**  
Then connect the other end to the ARC port of the soundbar.

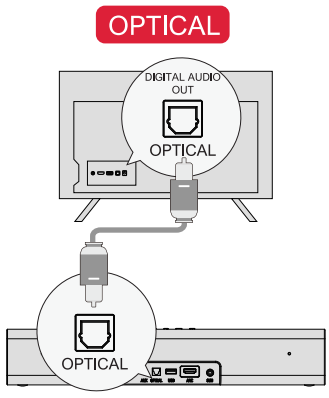


**Steps 3:**  
Press "ARC" button on the remote control to select "ARC" input.

**Note: Please turn on the "CEC" function on your TV.**  
When ARC is connected, your TV remote control can control the soundbar and TV simultaneously:  
1 Turn on/off 2 Adjust the volume

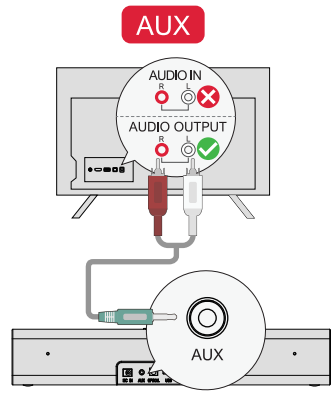
**If there is no sound: try setting the TV audio output to PCM:** TV Settings > Home > Settings > Sound > Digital Audio Output > PCM

## 4 CONNECT TO TV VIA OPTICAL / AUX



**OPTION 1: OPTICAL**

- 1 Make sure the TV's port is OPTICAL OUT, connect both sides of the cable to OPTICAL, for both the TV and the soundbar.
  - 2 Make sure the optical plug is inserted correctly as it shows in the picture. Do not insert the plug upside down and break the optical.
- Note:** If audio is playing from the internal TV speakers, mute or minimize the TV volume.



**OPTION 2: AUX**

- 1 Connect the 3.5mm to 3.5mm Audio Cable to your TV's AUDIO OUT port.
  - 2 Not support AUDIO IN port on TV.
- Note:** Please remember to unplug the AUX cable from TV and Soundbar when you want to switch to other mode.

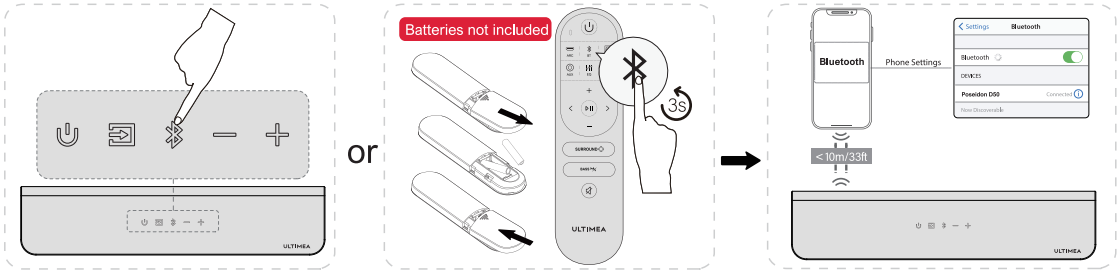
**In Optical Mode: If there is no sound, try setting the TV audio output to PCM:** TV Settings > Home > Settings > Sound > Digital Audio Output > PCM

## 5 CONNECT TO BLUETOOTH®

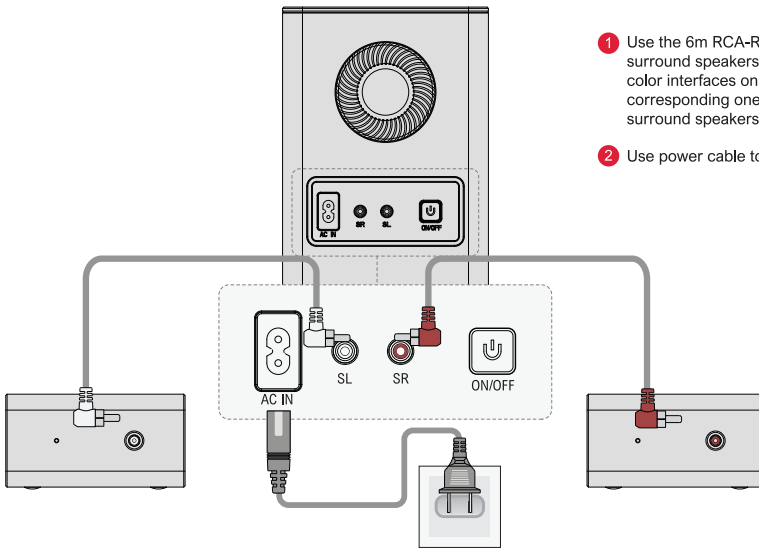
EN

- 1 Press the "Bluetooth" button on the soundbar or remote control to enter Bluetooth pairing mode.
- 2 Open your phone's Bluetooth settings, find and select "Poseidon D50" to connect to the soundbar.

**Note:** If it's already in the Bluetooth mode and connected, press and hold "Bluetooth" button for 3 seconds to disconnect the current device and connect to new device manually on your mobile phone / PC / TV.

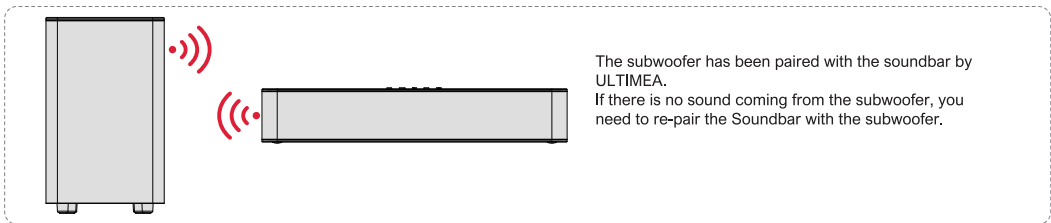


## 6 CONNECT TO SUBWOOFER AND SURROUND SPEAKERS

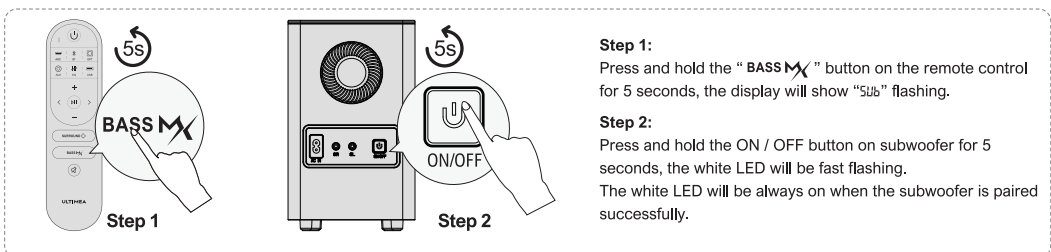


- 1 Use the 6m RCA-RCA cables to connect the subwoofer and surround speakers, please pay attention to match the same color interfaces on the surround speakers with the corresponding ones on the subwoofer and place the surround speakers accordingly.
- 2 Use power cable to connect your subwoofer and power port.

## 7 PAIRING SUBWOOFER



The subwoofer has been paired with the soundbar by ULTIMEA.  
If there is no sound coming from the subwoofer, you need to re-pair the Soundbar with the subwoofer.

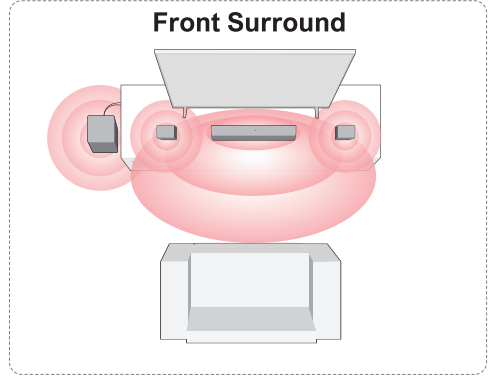
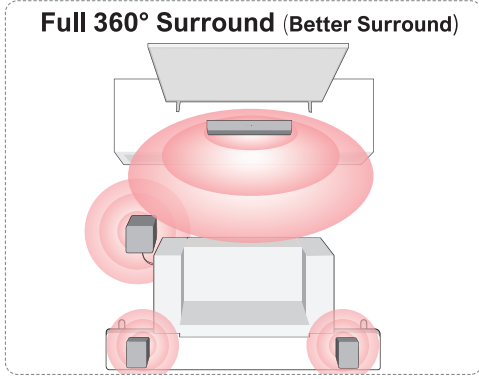


**Step 1:**  
Press and hold the "BASS" button on the remote control for 5 seconds, the display will show "Sub" flashing.

**Step 2:**  
Press and hold the ON / OFF button on subwoofer for 5 seconds, the white LED will be fast flashing.  
The white LED will be always on when the subwoofer is paired successfully.

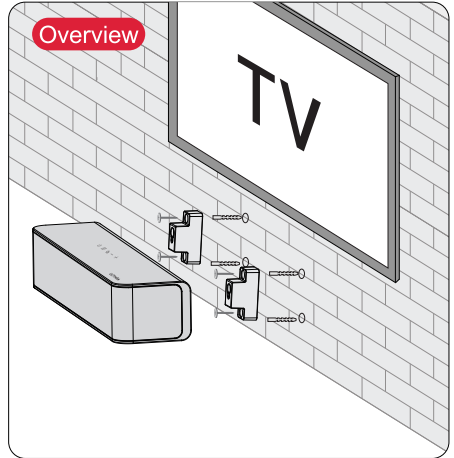
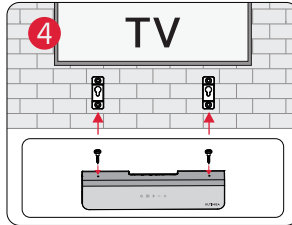
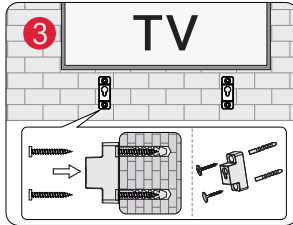
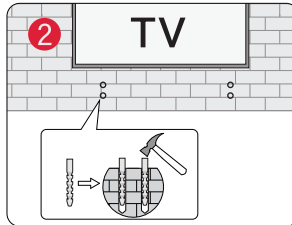
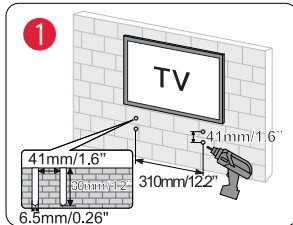
## 8 PLACEMENT OPTION

EN



- 1 For a better listening experience, please choose one of the two placement options shown in the illustration above based on your home environment.
- 2 The soundbar and surround speakers should be placed at or near ear level.

## 9 WALL MOUNT INSTALLATION



Note: Wall-mounted surround speakers follow the same configuration as shown in the above pictures

## 10 SPECIFICATIONS

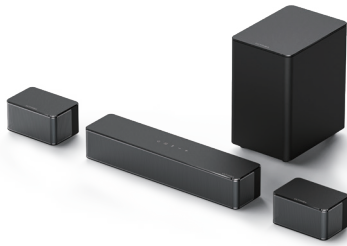
Model Number	U2500
Power Supply	AC 100-240V, ~50/60Hz
Soundbar Drivers	2.25" × 3 (Soundbar) + 2.25" × 2 (Surround Speaker) + 5.25" (Subwoofer)
Frequency Response	40Hz - 18kHz
Standby Power	<0.5W
Operating Temperature	0°C - 45°C/32°F - 113°F

Dimensions and Weight		
Soundbar	400(W) × 70(H) × 90(D)mm	15.7" × 2.8" × 3.5"
Subwoofer	155(W) × 244(H) × 215(D)mm	6.1" × 9.6" × 8.5"
Surround Speaker	135(W) × 70(H) × 90 (D)mm	5.3" × 2.8" × 3.5"
Packaging	335(W) × 442(H) × 192(D)mm	13.1" × 17.4" × 7.5"
Net Weight	5.7kg / 12.6lbs	
Gross Weight	6.3kg / 13.9lbs	

ULTIMEA

Poseidon D50

# Benutzerhandbuch



Modell Nr.: U2500

## WIR SIND BEREIT ZU HELFE



support@ultimea.com

DE

Bevorzugen Sie ein  
**Video-Tutorial?**  
Setup-Anleitung Video, oder  
USER MANUAL auf ULTIMEA  
Website.

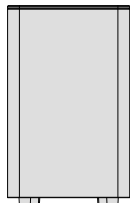
@ultimea\_official



support.ultimea.com

+1 888-598-8875(US) Mon-Fri 9am-5pm(PST)  
+49 89-628-25828(EU) Mon-Fri 9am-5pm(CET)

## 1 ZUBEHÖRLISTE



Subwoofer



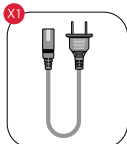
Soundbar



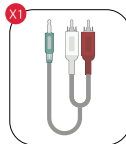
Surround-Lautsprecher x 2



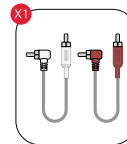
Netzadapter



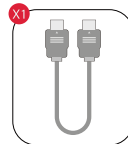
Subwoofer-  
Netzka-  
bel



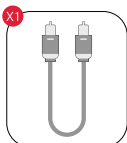
Stereo 3,5mm auf RCA  
Audiokabel



Stereo RCA zu  
RCA Kabel (6m)



HDMI-Kabel



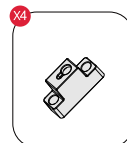
Optisches  
Digitalkabel



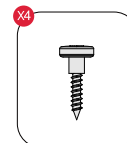
Fernbedienung



Wandmontageset



Wandhalterung

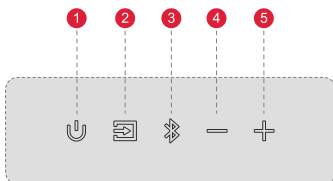


Befestigungsschraube  
an den Lautsprechern



Benutzerhandbuch

## 2 BEDIENELEMENTE FÜR DIE SOUNDBAR

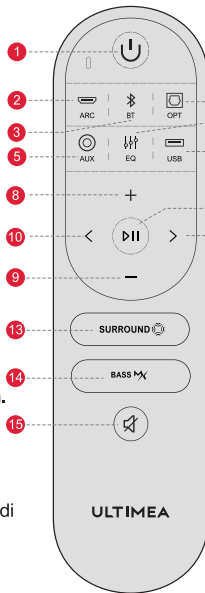


### Bedienfeld

- 1 "⏻": Einschalttaste**  
Zum Einschalten drücken / zum Ausschalten 3 Sekunden lang gedrückt halten.
- 2 "📺": Eingangsmodus**  
Drücken Sie diese Taste, um die Kanäle zu wechseln: ARC-OPT(OPTISCH)-BT-AUX-USB.
- 3 "📶": Bluetooth**  
Drücken Sie diese Taste, um zum BT-Kanal zu wechseln und den Kopplungsmodus zu aktivieren. Halten Sie die Taste 3 Sekunden lang gedrückt, um die Verbindung zum aktuellen Gerät zu trennen und manuell eine Verbindung zu einem neuen Gerät auf Ihrem Mobiltelefon/PC/Fernseher herzustellen (BT-ID: Poseidon D50).
- 4 "⏪": Lautstärke leiser**
- 5 "⏩": Lauter**

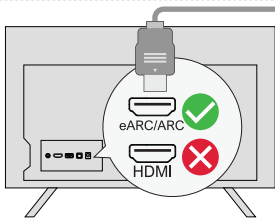
## Fernsteuerung

- 1 "⏻": **Einschalttaste**  
Zum Einschalten drücken / zum Ausschalten 3 Sekunden lang gedrückt halten.
- 2 "ARC": **ARC**  
Drücken Sie diese Taste, um zum HDMI ARC-Kanal zu wechseln.
- 3 "BT": **BT**  
Drücken Sie diese Taste, um zum BT-Kanal zu wechseln und den Kopplungsmodus zu aktivieren, Halten Sie die Taste 3 Sekunden lang gedrückt, um die Verbindung zum aktuellen Gerät zu trennen und manuell eine Verbindung zu einem neuen Gerät auf Ihrem Mobiltelefon / PC / Fernseher herzustellen (BT-ID: Poseidon D50).
- 4 "OPT": **OPT**  
Drücken, um zum OPTICAL-Kanal zu wechseln.
- 5 "AUX": **AUX**  
Drücken Sie diese Taste, um zum AUX-Kanal zu wechseln.
- 6 "EQ": **EQ**  
Drücken Sie diese Taste, um zwischen den Modi Film, Dialog und Musik umzuschalten; auf dem Display wird angezeigt: "EQ 1", "EQ 2", "EQ 3".
- 7 "USB": **USB**  
Drücken Sie diese Taste, um zum USB-Kanal zu wechseln.

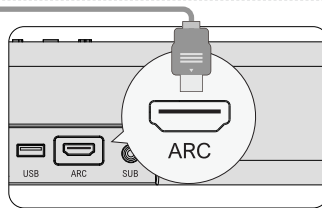


- 8 "+": **Lauter**
- 9 "-": **Lautstärke leiser**
- 10 "<": **Zurück**  
Nur im BT- und USB-Modus:  
Zum vorherigen Titel springen.
- 11 ">": **Nächster**  
Nur für den BT- und USB-Modus:  
Zum nächsten Titel springen.
- 12 "⏮": **Wiedergabe/Pause**  
Nur im BT- und USB-Modus.  
USB-Modus: Halten Sie die Taste 3 Sekunden lang gedrückt, um zwischen der Wiedergabe einer einzelnen Schleife und der Listenschleifenwiedergabe umzuschalten.
- 13 "SURROUND": **SURROUND**  
Drücken Sie diese Taste, um den Surround-Sound-Pegel einzustellen; auf dem Display wird angezeigt: "5f 1", "5f 2", "5f 3".
- 14 "BASS MX": **BASSMX™**  
Drücken Sie diese Taste, um den Basspegel einzustellen, auf dem Display wird angezeigt: "b5-3", "b5-2", "b5-1", "b5 0", "b5 1".
- 15 "🔊": **Stummschaltung / Wiederherstellung der Lautstärke.**

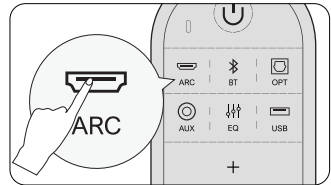
## 3 ANSCHLUSS AN FERNSEHER ÜBER ARC



**Schritt 1:**  
Verbinden Sie ein Ende des HDMI-Kabels mit dem eARC / ARC-Anschluss auf der Rückseite Ihres Fernsehers



**Schritt 2:**  
Schließen Sie dann das andere Ende an den ARC-Anschluss der Soundbar an.



**Schritt 3:**  
Drücken Sie die "ARC"-Taste auf der Fernbedienung, um den "ARC"-Eingang auszuwählen.

**Hinweis:** Bitte schalten Sie die "CEC"-Funktion an Ihrem Fernsehgerät ein.

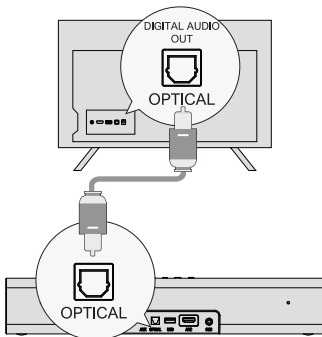
Wenn ARC angeschlossen ist, kann Ihre TV-Fernbedienung die Soundbar und den Fernseher gleichzeitig steuern:

- 1 Einschalten / Ausschalten
- 2 Lautstärke einstellen

**Wenn kein Ton zu hören ist: Versuchen Sie, den TV-Audioausgang auf PCM einzustellen:** TV-Einstellungen > Home > Einstellungen > Ton > Digitaler Audioausgang > PCM

## 4 ANSCHLUSS AN FERNSEHER ÜBER OPTISCH / AUX

### OPTISCH

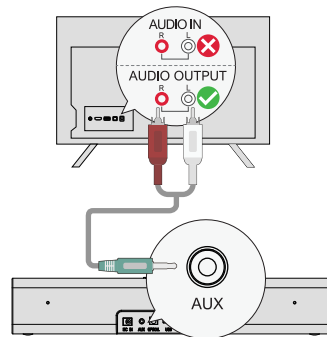


**OPTION 1: OPTISCH**

- 1 Vergewissern Sie sich, dass der Anschluss des Fernsehers auf OPTICAL OUT eingestellt ist, und verbinden Sie beide Seiten des Kabels mit OPTICAL, sowohl für den Fernseher als auch für die Soundbar.
  - 2 Vergewissern Sie sich, dass der optische Stecker richtig eingesteckt ist, wie auf dem Bild zu sehen. Stecken Sie den Stecker nicht verkehrt herum ein, um das optische Kabel nicht zu beschädigen.
- Hinweis:** Wenn der Ton über die internen TV-Lautsprecher wiedergegeben wird, schalten Sie die Lautstärke des Fernsehers stumm oder verringern Sie sie.

**Im optischen Modus: Wenn kein Ton zu hören ist, versuchen Sie, den Audioausgang des Fernsehers auf PCM einzustellen:**  
TV-Einstellungen > Home > Einstellungen > Ton > Digitaler Audioausgang > PCM

### AUX




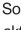
**OPTION 2: AUX**

- 1 Schließen Sie das 3,5-mm-auf-3,5-mm-Audiokabel an den AUDIO OUT-Anschluss Ihres Fernsehers an.
  - 2 Unterstützt nicht den AUDIO IN-Anschluss des Fernsehers.
- Hinweis:** Bitte denken Sie daran, das AUX-Kabel vom Fernseher und der Soundbar zu trennen, wenn Sie in einen anderen Modus wechseln möchten.

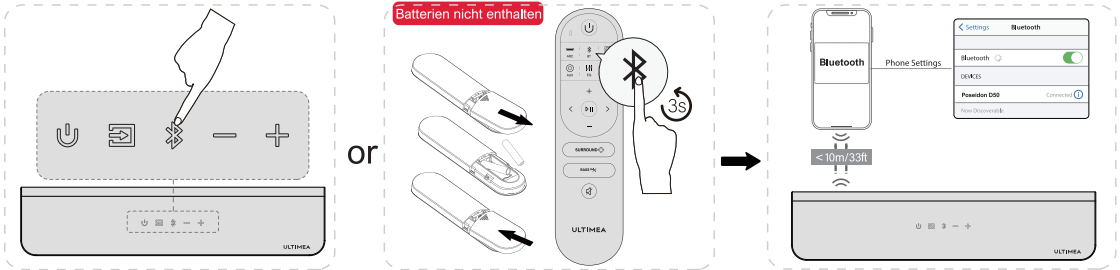


## 5 VERBINDEN MIT BLUETOOTH®

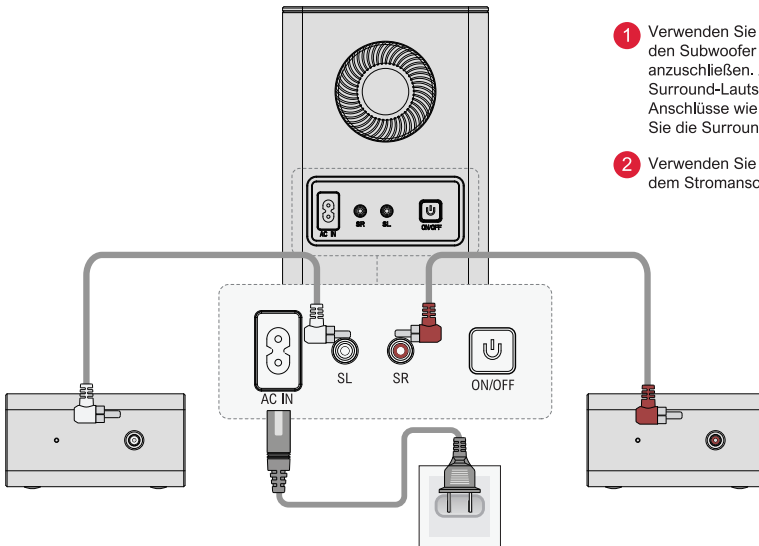
- 1 Drücken Sie die Taste "  " auf der Soundbar oder der Fernbedienung, um den Bluetooth-Kopplungsmodus zu aktivieren.
- 2 Öffnen Sie die Bluetooth-Einstellungen Ihres Telefons, suchen Sie "Poseidon D50" und wählen Sie es aus, um die Soundbar zu verbinden.

**Hinweis:** Wenn sich die Soundbar bereits im Bluetooth-Modus befindet und verbunden ist, halten Sie die Taste "  " 3 Sekunden lang gedrückt, um die Verbindung mit dem aktuellen Gerät zu trennen und das neue Gerät manuell auf Ihrem Mobiltelefon / PC / Fernseher zu verbinden.

DE

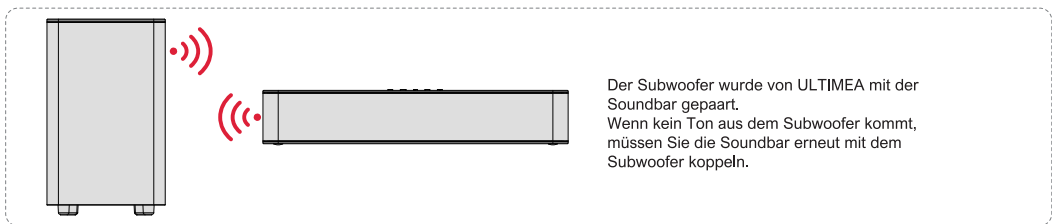


## 6 ANSCHLUSS AN SUBWOOFER UND SURROUND-LAUTSPRECHER

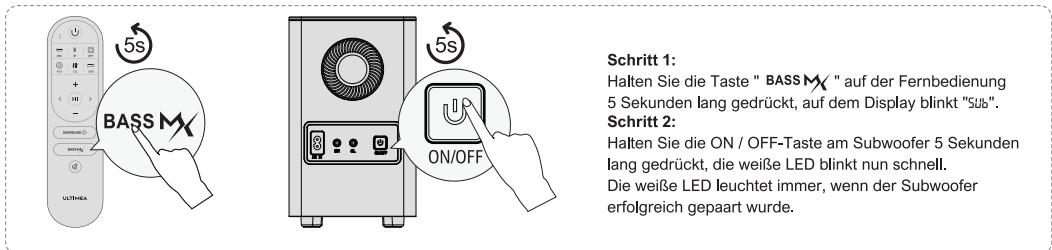


- 1 Verwenden Sie die 6 m langen RCA-RCA-Kabel, um den Subwoofer und die Surround-Lautsprecher anzuschließen. Achten Sie darauf, dass die Surround-Lautsprecher die gleichen farbigen Anschlüsse wie der Subwoofer haben und platzieren Sie die Surround-Lautsprecher entsprechend.
- 2 Verwenden Sie das Netzkabel, um den Subwoofer mit dem Stromanschluss zu verbinden.

## 7 KOPPLUNG DES SUBWOOFERS



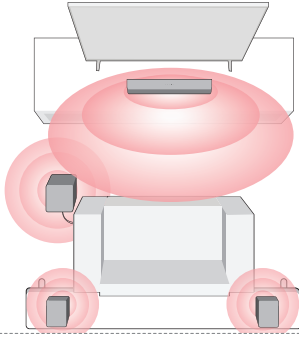
Der Subwoofer wurde von ULTIMEA mit der Soundbar gepaart. Wenn kein Ton aus dem Subwoofer kommt, müssen Sie die Soundbar erneut mit dem Subwoofer koppeln.



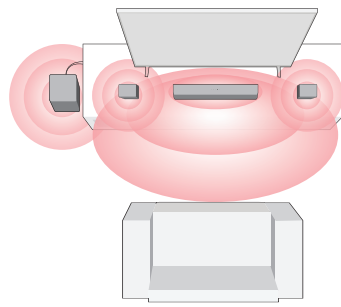
**Schritt 1:** Halten Sie die Taste " **BASS Mx** " auf der Fernbedienung 5 Sekunden lang gedrückt, auf dem Display blinkt "5s".  
**Schritt 2:** Halten Sie die ON / OFF-Taste am Subwoofer 5 Sekunden lang gedrückt, die weiße LED blinkt nun schnell. Die weiße LED leuchtet immer, wenn der Subwoofer erfolgreich gepaart wurde.

## 8 AUFSTELLUNGSOPTIONEN

### Vollständiger 360°-Surround (Besserer Surround)

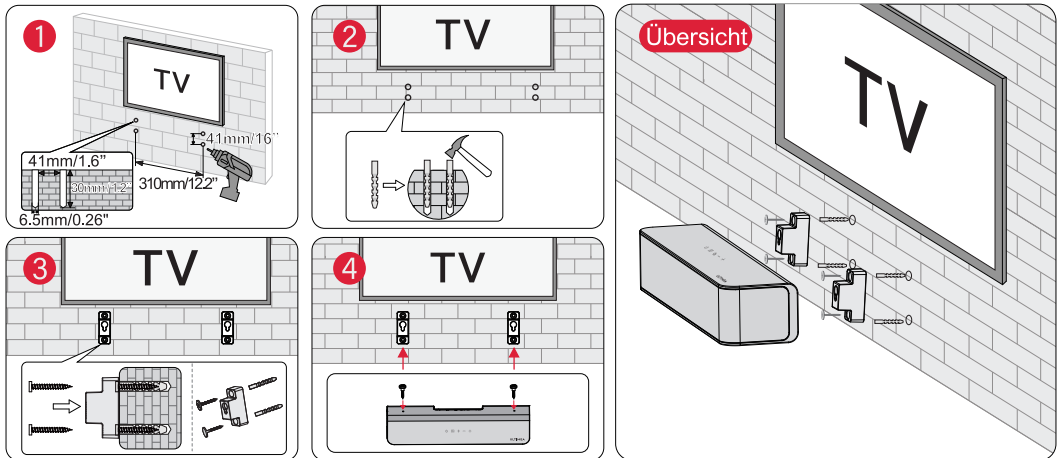


### Front-Surround



- 1 Für ein besseres Hörerlebnis wählen Sie bitte eine der beiden in der obigen Abbildung gezeigten Aufstellungsoptionen, je nach Ihrer Wohnumgebung.
- 2 Die Soundbar und die Surround-Lautsprecher sollten auf oder in der Nähe der Ohrhöhe aufgestellt werden.

## 9 WANDMONTAGE



**Hinweis:** Für die Wandmontage von Surround-Lautsprechern gilt die gleiche Konfiguration wie in den obigen Abbildungen.

## 10 SPEZIFIKATIONEN

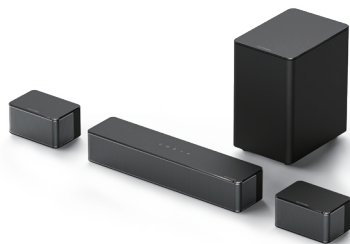
Modell Nummer	U2500
Stromversorgung	AC 100-240V, ~50/60Hz
Soundbar-Treiber	2.25" × 3 (Soundbar) + 2.25" × 2 (Surround-Lautsprecher) + 5.25" (Subwoofer)
Frequenzgang	40Hz - 18kHz
Standby-Leistung	<0.5W
Betriebstemperatur	0°C - 45°C/32°F - 113°F

Abmessungen und Gewicht		
Soundbar	400(W) × 70(H) × 90(D)mm	15.7" × 2.8" × 3.5"
Subwoofer	155(W) × 244(H) × 215(D)mm	6.1" × 9.6" × 8.5"
Surround-Lautsprecher	135(W) × 70(H) × 90 (D)mm	5.3" × 2.8" × 3.5"
Verpackung	335(W) × 442(H) × 192(D)mm	13.1" × 17.4" × 7.5"
Nettogewicht	5.7kg / 12.6lbs	
Bruttogewicht	6.3kg / 13.9lbs	

ULTIMEA

Poseidon D50

# ユーザー取扱説明書



モデル番号: U2500

うちはご支援  
させていただ  
く準備が整い  
ております。



support@ultimea.com

JP

ビデオチュートリアル  
をご希望ですか？

設定方法のビデオ、或いは  
ULTIMEAホームページの取扱説  
明書をご参照ください。



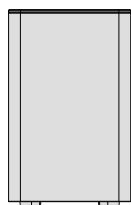
@ultimea\_official



support.ultimea.com

+1 888-598-8875(US) Mon-Fri 9am-5pm(PST)  
+49 89-628-25828(EU) Mon-Fri 9am-5pm(CET)

## 1 付属品リスト



サブウーファー



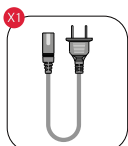
スピーカー



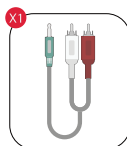
サラウンドスピーカー×2



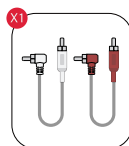
電源アダプター



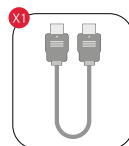
サブウーファー  
電源ケーブル



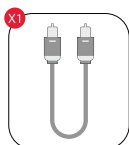
3.5mm - RCAオーデ  
ィオケーブル



RCA-RCAケー  
ブル (6m)



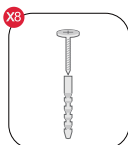
HDMIケーブル



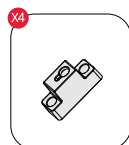
光デジタル  
ケーブル



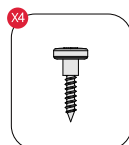
リモコン



壁掛け用ネジ



壁掛け用ブラケット

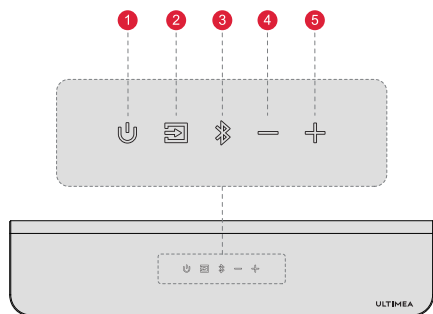


スピーカー取り  
付け用ネジ



取扱説明書

## 2 サウンドバーコントロール

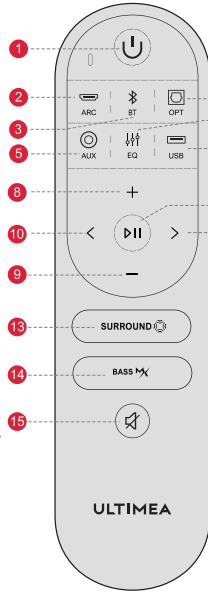


### コントロールパネル

- 1 “” : 電源ボタン  
一回押すと電源が入り、3秒間押し続けると電源が切れます。
- 2 “” : 入力モード  
一回押してチャンネルを切り替え: arc-opt (optical)-bt-aux-usb.
- 3 “” : Bluetooth  
一回押してBTチャンネルに切り替え、ペアリングモードに入ります。3秒間長押しすると、現在のデバイスが切断され、スマホ/パソコン/TVに手で接続されている新しいデバイス (BT ID: Poseidon D50) が選択されます。
- 4 “” : ボリュームダウン
- 5 “” : ボリュームアップ

### 3リモコン

- 1 “**⏻**” :電源ボタン  
電源オン/3秒間長押しで電源オフ
- 2 “**⇄**” :ARC  
押すとHDMI ARCチャンネルに切り替わります
- 3 “**📶**” :BT  
一回押してBTチャンネルに切り替え、ペアリングモードに入ります  
3秒間長押しすると、現在のデバイスが切断され、携帯電話/PC/TV (BT ID: Poseidon D50) で新しいデバイスへの手動接続が選択されます
- 4 “**📺**” :OPT  
一回押してOPTICALチャンネルに切り替えます
- 5 “**🎧**” :AUX  
一回押してAUXチャンネルに切り替えます
- 6 “**🎵**” :EQ  
一回押してムービー、ダイアログ、ミュージックモードを切り替えます  
“EQ 1”, “EQ 2”, “EQ 3”
- 7 “**📶**” :USB  
一回押してUSBチャンネルに切り替えます



- 8 “**+**” :ボリュームアップ
- 9 “**-**” :ボリュームダウン
- 10 “**<**” :前の曲  
BTおよびUSBモードのみ: 前の曲へスキップ
- 11 “**>**” :次の曲  
BTおよびUSBモードのみ: 次の曲へスキップ
- 12 “**⏮**” :再生/一時停止  
BTおよびUSBモードのみ  
USBモード: 3秒間長押しすると、1曲ループ再生とリストループ再生が切り替わります
- 13 “**SURROUND**” :ラウンド・サウンド  
一回押して、サラウンド・サウンド・レベルを調整します。ディスプレイにレベルと表示されます: “5r-1”, “5r 0”, “5r 1”
- 14 “**BASS MX**” :BASSMX™  
一回押して低音レベルを調整し、ディスプレイにレベルと表示されます:  
“b5-3”, “b5-2”, “b5-1”, “b5 0”, “b5 1”
- 15 “**🔇**” :ミュート/音量を復元します。

### 3 arc 経由でテレビに接続する

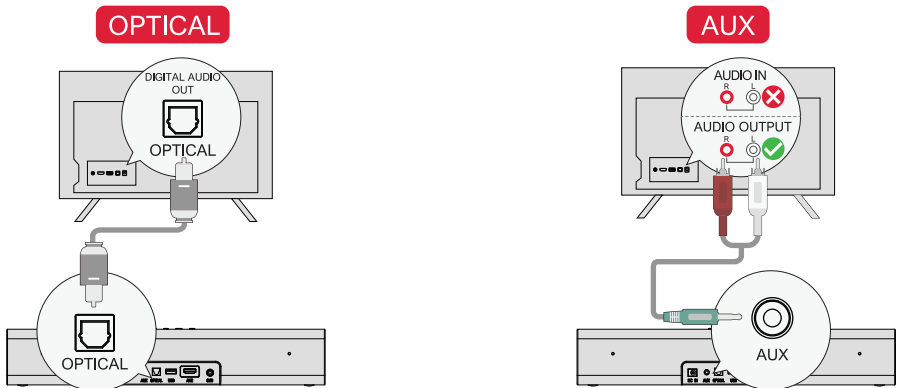
**ステップ1:**  
HDMIケーブルの一端をテレビ背面のeARC /ARCポートに接続します。

**ステップ2:**  
もう一方の端子をサウンドバーのARCポートに接続します。

**ステップ3:**  
リモコンの「ARC」ボタンを押して「ARC」入力を選択します。

**注:** テレビの「CEC」機能をオンにしてください。  
ARCを接続すると、テレビのリモコンでサウンドバーとテレビを同時に操作できます:  
1 スイッチのオン/オフで 2 音量を調整する  
**音が出ない場合:** テレビの音声出力をPCMに設定してみてください: テレビの設定 > ホーム > 設定 > サウンド > デジタル音声出力 > PCM

### 4 光ファイバー/AUXケーブルによるテレビの接続



接続方法 1: OPTICAL

接続方法 2: AUX

- 1 テレビとサウンドバーからのケーブルの両端をOPTICALポートに接続し、テレビのポートがOPTICAL OUTであることを確認します。
  - 2 光プラグが図のように正しく差し込まれていることを確認してください。光ファイバーが断線する恐れがあるため、プラグを逆に差し込まないでください。
- 注:** テレビの内蔵スピーカーから音声再生されている場合は、テレビの音量をミュートまたは最小にしてください。

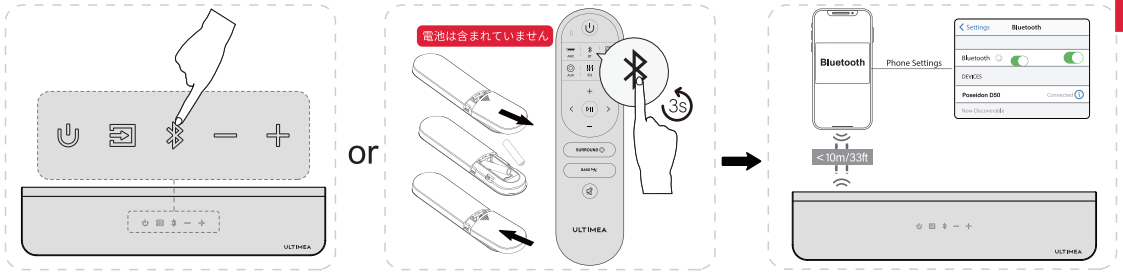
- 1 3.5mm-3.5mmオーディオケーブルをテレビのオーディオ出力ポートに接続します。
  - 2 テレビのAUDIO INポートには対応していません。
- 注:** 他のモードに切り替えたいときは、テレビとサウンドバーからAUXケーブルを抜くことを忘れないでください。

**オプティカルモードの場合:** 音が出ない場合は、テレビの音声出力をPCMに設定してみてください:  
TV Setup > Home > Settings > Sound > Digital Audio Output > PCM

## 5 Bluetooth®への接続

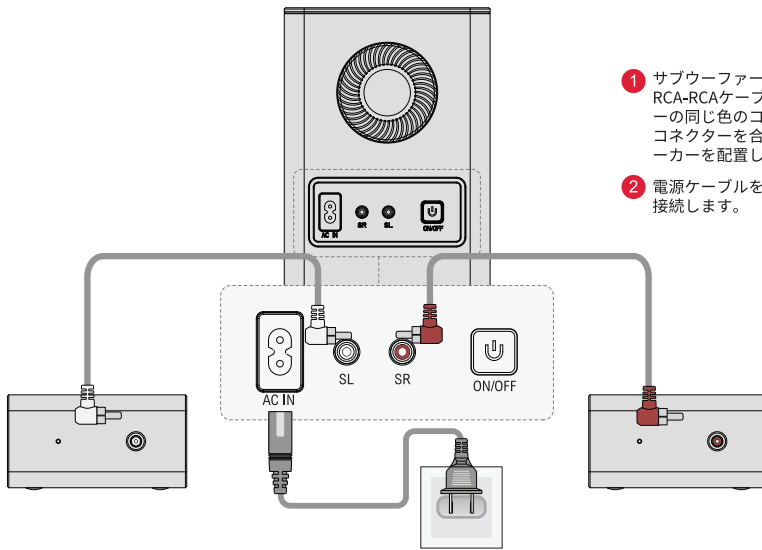
- 1 スピーカーまたはリモコンの"Bluetooth"ボタンを押して、Bluetoothペアリングモードに入ります。
- 2 携帯電話のBluetooth設定を開き、「Poseidon D50」を見つけて選択し、スピーカーに接続します。

注: Bluetoothモードに入って接続した場合は、「Bluetooth」ボタンを3秒間長押しして現在のデバイスを切断し、携帯電話/コンピュータ/テレビで新しいデバイスに手動で接続してください。



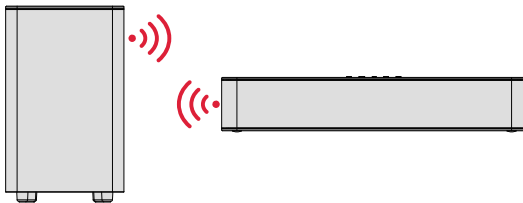
JP

## 6 サブウーファーとサラウンドスピーカーの接続

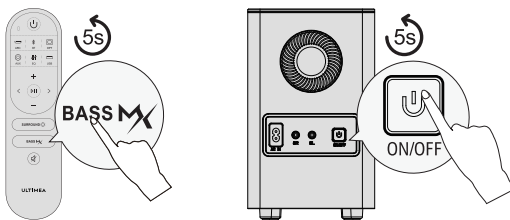


- 1 サブウーファーとサラウンドスピーカーを6mのRCA-RCAケーブルで接続します。サラウンドスピーカーの同じ色のコネクターとサブウーファーの対応するコネクターを合わせ、それに合わせてサラウンドスピーカーを配置してください。
- 2 電源ケーブルを使ってサブウーファーの電源ポートに接続します。

## 7 サブウーファーのペアリング



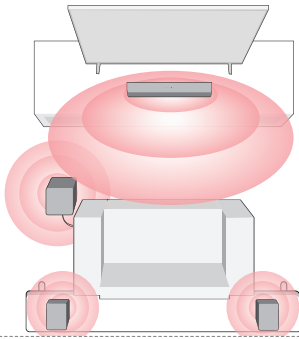
サブウーファーはULTIMEA経由でサウンドバーとペアリングされています。サブウーファーから音が出ない場合は、サウンドバーとサブウーファーを再度ペアリングする必要があります。



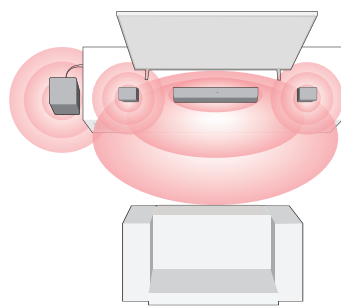
**ステップ1:**  
リモコンの「BASS MX」ボタンを5秒間押し続けると、ディスプレイには[Sub]と表示され、点滅します。  
**ステップ2:**  
サブウーファーのオン/オフボタンを5秒間押し続けると、白いLEDが急速に点滅します。サブウーファーのペアリングが成功すると、白色LEDが常時点灯します。

## 8 配置に関する提案

### 360°フルサラウンド (より良いサラウンド)

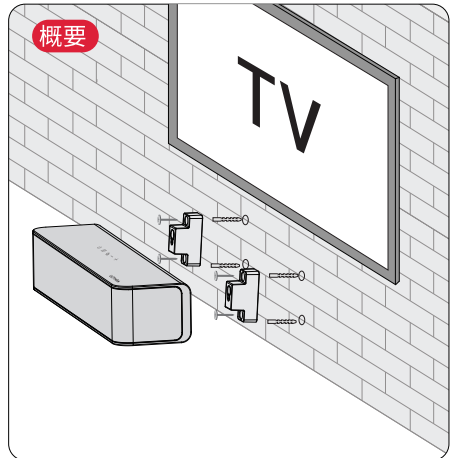
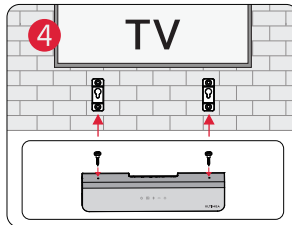
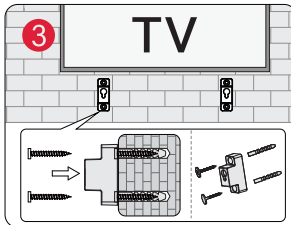
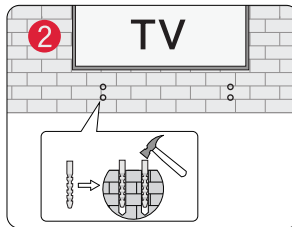
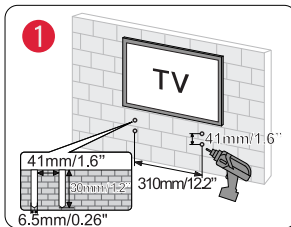


### フロント・サラウンド



- 1 より良いリスニング体験のために、ご自宅の環境に合わせて上記の2つの配置オプションのいずれかを選択してください。
- 2 サウンドバーとサラウンドスピーカーは、耳の高さ位置、またはその近くに設置してください。

## 9 壁掛け



注：壁掛けサラウンドスピーカーの構成は上図と同じです。

## 10 仕様

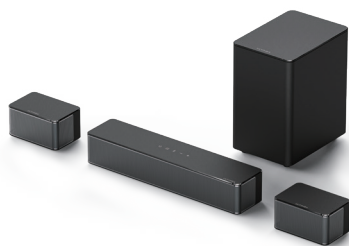
モデル番号	U2500
電源供給	AC 100-240V, ~50/60Hz
サウンドバードライバー	2.25ch × 3 (サウンドバー) + 2.25ch × 2 (サラウンドスピーカー) + 5.25ch (サブウーファー)
周波数帯域	40Hz - 18kHz
待機電力	<0.5W
動作温度	0°C - 45°C/32°F - 113°F

サウンドバー	400(W) × 70(H) × 90(D)mm	15.7" × 2.8" × 3.5"
サブウーファー	155(W) × 244(H) × 215(D)mm	6.1" × 9.6" × 8.5"
サラウンド・スピーカー	135(W) × 70(H) × 90 (D)mm	5.3" × 2.8" × 3.5"
包装	335(W) × 442(H) × 192(D)mm	13.1" × 17.4" × 7.5"
正味重量	5.7kg / 12.6lbs	
総重量	6.3kg / 13.9lbs	

ULTIMEA

Poseidon D50

# Manuel d'utilisation



Numéro de modèle: U2500

## NOUS SOMMES PRÊTS À VOUS AIDER



support@ultimea.com

FR

### Vous préférez un tutoriel vidéo ?

Vidéo d'aide à l'installation, ou  
MANUEL D'UTILISATION sur le  
site web d'ULTIMEA.



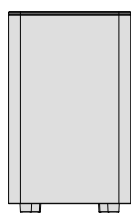
@ultimea\_official



support.ultimea.com

+1 888-598-8875(US) Mon-Fri 9am-5pm(PST)  
+49 89-628-25828(EU) Mon-Fri 9am-5pm(CET)

## 1 LISTE DES ACCESSOIRES



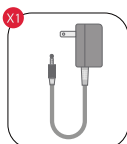
Caisson de basse



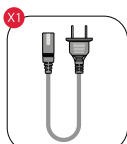
Barre de son



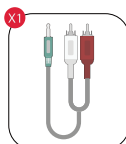
Enceinte surround x 2



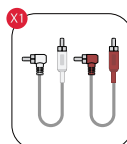
Adaptateur  
d'alimentation



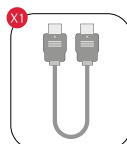
Câble d'alimentation pour  
caisson de basse



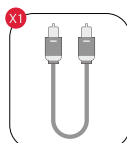
Câble audio stéréo  
3.5 mm vers RCA



Câble stéréo RCA  
vers RCA (6m)



Câble HDMI



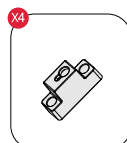
Câble optique  
numérique



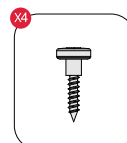
Télécommande



Kit de montage mural



Support mural

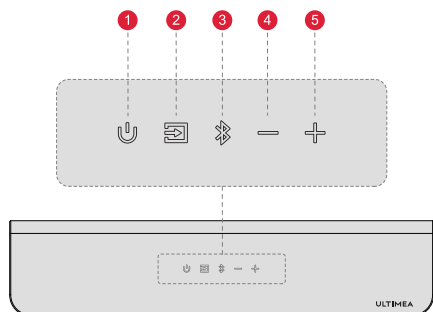


Vis de montage sur  
les enceintes



Manuel de l'utilisateur

## 2 COMMANDES DE LA BARRE DE SON

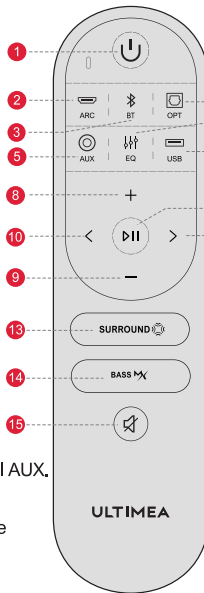


### Panneau de contrôle

- 1 "U": Bouton d'alimentation**  
Appuyez sur ce bouton pour allumer l'appareil / Maintenez-le enfoncé pendant 3 secondes pour l'éteindre.
- 2 "I": Mode d'entrée**  
Appuyez sur ce bouton pour changer de canal : ARC-OPT (OPTICAL)-BT-AUX-USB.
- 3 "B": Bluetooth**  
Appuyez sur cette touche pour passer au canal BT et entrer en mode d'appariement. Maintenez cette touche enfoncée pendant 3 secondes pour déconnecter l'appareil actuel et choisir de vous connecter manuellement à un nouvel appareil sur votre téléphone portable / PC / TV (BT ID : Poseidon D50).
- 4 "−": Réduction du volume**
- 5 "+": Augmenter le volume**

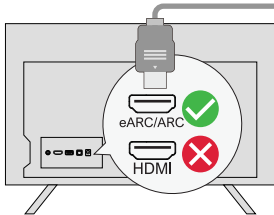
## Télécommande

- 1 "⏻": **Bouton d'alimentation**  
Appuyer pour allumer / Maintenir pendant 3 secondes pour éteindre.
- 2 "ARC": **ARC**  
Appuyez sur cette touche pour passer au canal HDMI ARC.
- 3 "BT": **BT**  
Appuyez sur cette touche pour passer au canal BT et entrer en mode d'appairage. Maintenez cette touche enfoncée pendant 3 secondes pour déconnecter l'appareil actuel et choisir de vous connecter manuellement à un nouvel appareil sur votre téléphone portable / PC / TV (BT ID : Poseidon D50).
- 4 "OPT": **OPT**  
Appuyez sur cette touche pour passer au canal OPTICAL.
- 5 "AUX": **AUX**  
Appuyez sur cette touche pour passer au canal AUX.
- 6 "EQ": **EQ**  
Appuyez sur cette touche pour basculer entre les modes Film, Dialogue et Musique : "EQ 1", "EQ 2", "EQ 3".
- 7 "USB": **USB**  
Appuyez sur cette touche pour passer au canal USB.

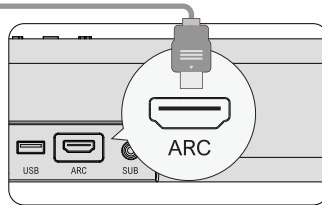


- 8 "+": **Augmentation du volume**
- 9 "-": **Diminution du volume**
- 10 "<": **Précédent**  
Pour les modes BT et USB uniquement : Passer à la piste précédente.
- 11 ">": **Suivant**  
Pour les modes BT et USB uniquement : Passer à la piste suivante.
- 12 "⏸": **Lecture / Pause**  
Pour les modes BT et USB uniquement. Mode USB : Maintenez cette touche enfoncée pendant 3 secondes pour basculer entre la lecture en boucle simple et la lecture en boucle en liste.
- 13 "SURROUND": **SURROUND**  
Appuyez sur cette touche pour régler le niveau du son surround : "5F-1", "5F 0", "5F 1".
- 14 "BASS Mx": **BASSMX**  
Appuyez sur cette touche pour régler le niveau des basses, l'écran affiche : "b5-3", "b5-2", "b5-1", "b5 0", "b5 1".
- 15 "🔊": **Muet / Récupérer le volume.**

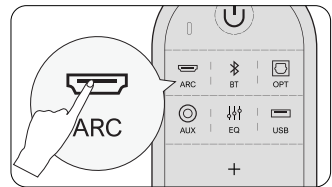
## 3 CONNECTER AU TÉLÉVISEUR VIA ARC



**Étape 1:**  
Connectez une extrémité du câble HDMI au port eARC / ARC à l'arrière de votre téléviseur.



**Étape 2:**  
Connectez ensuite l'autre extrémité au port ARC de la barre de son.



**Étape 3:**  
Appuyez sur la touche "ARC" de la télécommande pour sélectionner l'entrée "ARC".

**Remarque : Activez la fonction "CEC" sur votre téléviseur.**

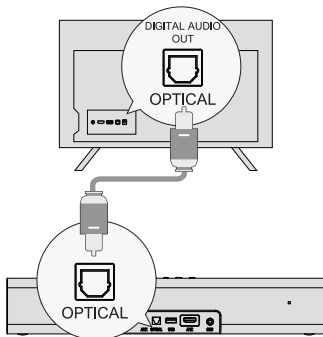
Lorsque l'entrée ARC est connectée, la télécommande de votre téléviseur peut contrôler simultanément la barre de son et le téléviseur :

- 1 Allumer/éteindre
- 2 Régler le volume

**S'il n'y a pas de son : essayez de régler la sortie audio du téléviseur sur PCM :** Accueil > Réglages > Son > Sortie audio numérique > PCM

## 4 CONNEXION AU TÉLÉVISEUR VIA OPTIQUE / AUX

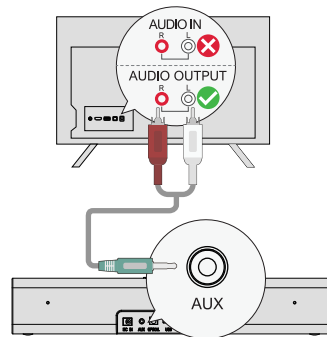
### OPTIQUE



#### OPTION 1 : OPTIQUE

- 1 Assurez-vous que le port du téléviseur est OPTICAL OUT, connectez les deux côtés du câble à OPTICAL, à la fois pour le téléviseur et la barre de son.
  - 2 Assurez-vous que la prise optique est insérée correctement, comme indiqué sur l'image. N'insérez pas la fiche à l'envers et ne cassez pas le câble optique.
- Remarque :** si le son est diffusé par les haut-parleurs internes du téléviseur, mettez le volume du téléviseur en sourdine ou réduisez-le au minimum.

### AUX




#### OPTION 2: AUX


- 1 Connectez le câble audio 3.5 mm à 3.5 mm au port AUDIO OUT de votre téléviseur.
  - 2 Le port AUDIO IN du téléviseur n'est pas pris en charge.
- Remarque :** N'oubliez pas de débrancher le câble AUX de la télévision et de la barre de son lorsque vous souhaitez passer à un autre mode.

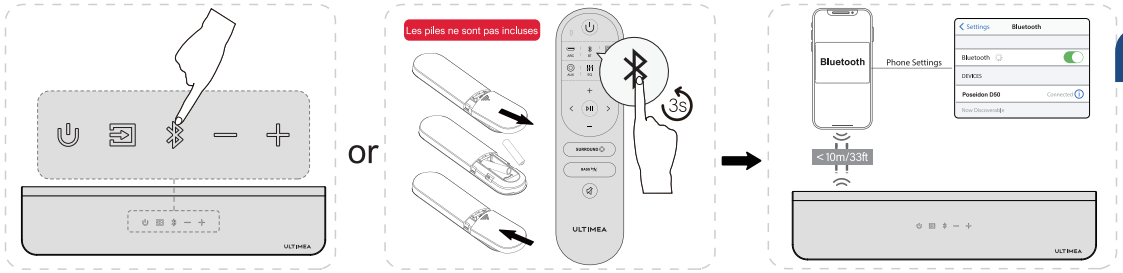
**En mode optique : S'il n'y a pas de son, essayez de régler la sortie audio du téléviseur sur PCM :**  
Réglages du téléviseur > Accueil > Réglages > Son > Sortie audio numérique > PCM



## 5 CONNEXION AU BLUETOOTH®

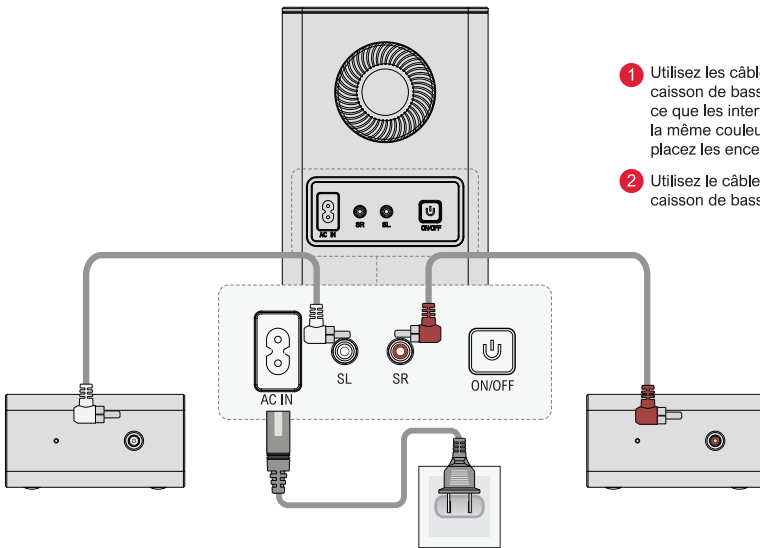
- 1 Appuyez sur le bouton "  " de la barre de son ou de la télécommande pour entrer dans le mode d'appairage Bluetooth.
- 2 Ouvrez les paramètres Bluetooth de votre téléphone, trouvez et sélectionnez "Poseidon D50" pour connecter la barre de son.

**Remarque:** si la barre de son est déjà en mode Bluetooth et connectée, appuyez sur le bouton "  " et maintenez-le enfoncé pendant 3 secondes pour déconnecter l'appareil actuel et connecter le nouvel appareil manuellement sur votre téléphone portable / PC / TV.



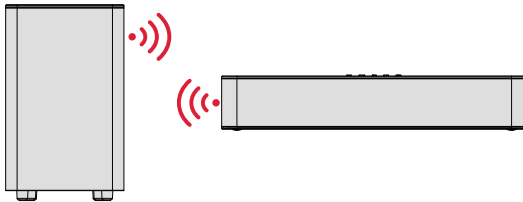
FR

## 6 CONNEXION AU CAISSON DE BASSE ET AUX ENCEINTES SURROUND

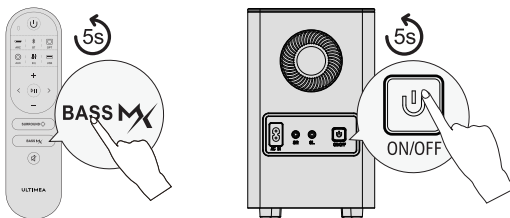


- 1 Utilisez les câbles RCA-RCA de 6 m pour connecter le caisson de basse et les enceintes surround. Veillez à ce que les interfaces des enceintes surround soient de la même couleur que celles du caisson de basse et placez les enceintes surround en conséquence.
- 2 Utilisez le câble d'alimentation pour connecter votre caisson de basse et le port d'alimentation.

## 7 SUBWOOFER APPARIÉ



Le caisson de basse a été apparié à la barre de son par ULTIMEA.  
Si aucun son ne provient du caisson de basse, vous devez appairer à nouveau la barre de son avec le caisson de basse.



### Étape 1:

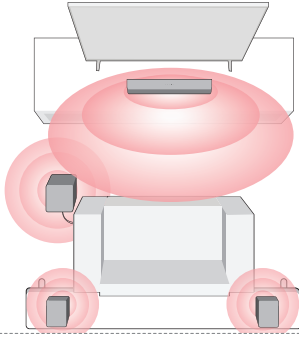
Appuyez sur le bouton " BASS Mx " de la télécommande et maintenez-le enfoncé pendant 5 secondes, l'écran affiche "Sub" en clignotant.

### Étape 2:

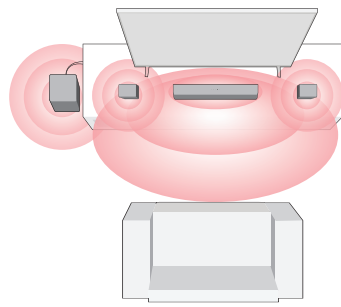
Appuyez sur le bouton ON / OFF du caisson de basse et maintenez-le enfoncé pendant 5 secondes, la LED blanche clignote rapidement.  
La LED blanche s'allume en permanence lorsque le caisson de basse est apparié avec succès.

## 8 OPTIONS DE PLACEMENT

### Surround 360° (Meilleur Surround)

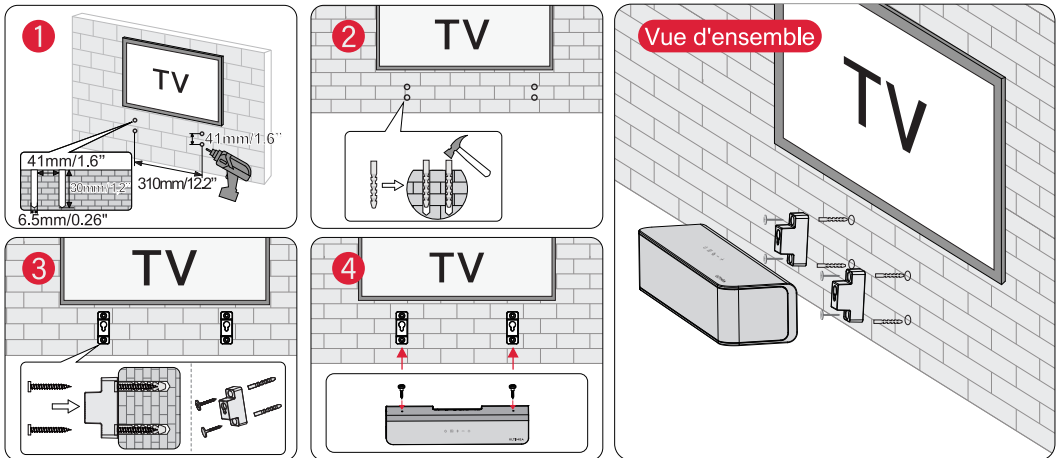


### Surround avant



- 1 Pour une meilleure écoute, choisissez l'une des deux options de placement indiquées dans l'illustration ci-dessus en fonction de votre environnement domestique.
- 2 la barre de son et les enceintes surround doivent être placées au niveau des oreilles ou à proximité.

## 9 INSTALLATION MURALE



**Remarque:** Les enceintes surround montées au mur suivent la même configuration que celle illustrée dans les images ci-dessus.

## 10 SPÉCIFICATIONS

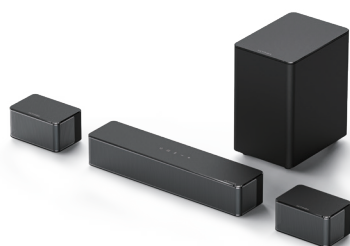
Número de modèle	U2500
Alimentation Électrique	AC 100-240V, ~50/60Hz
Pilotes de la barre de son	2.25" x 3 (barre de son) + 2.25" x 2 (Enceinte surround) + 5.25" (caisson de basse)
Réponse en fréquence	40Hz - 18kHz
Puissance en veille	<0.5W
Température de fonctionnement	0°C - 45°C/32°F - 113°F

Dimensions et poids	
Barre de son	400(W) x 70(H) x 90(D)mm 15.7" x 2.8" x 3.5"
Caisson de basse	155(W) x 244(H) x 215(D)mm 6.1" x 9.6" x 8.5"
Enceinte surround	135(W) x 70(H) x 90 (D)mm 5.3" x 2.8" x 3.5"
Emballage	335(W) x 442(H) x 192(D)mm 13.1" x 17.4" x 7.5"
Poids net	5.7kg / 12.6lbs
Peso lordo	6.3kg / 13.9lbs

ULTIMEA

Poseidon D50

# Manuale d'uso



Numero di modello: U2500

## SIAMO PRONTI AD AIUTARE



support@ultimea.com

### Preferite un video tutorial?

Video guida all'installazione o MANUALE D'USO sul sito web di ULTIMEA.

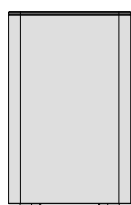
@ultimea\_official



support.ultimea.com

+1 888-598-8875(US) Mon-Fri 9am-5pm(PST)  
+49 89-628-25828(EU) Mon-Fri 9am-5pm(CET)

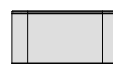
## 1 ELENCO ACCESSORI



Subwoofer



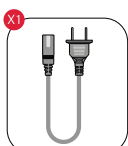
Soundbar



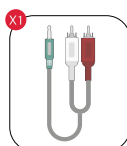
Altoparlante surround x 2



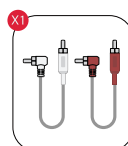
Adattatore di alimentazione



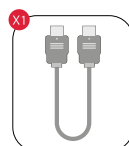
Cavo di alimentazione del subwoofer



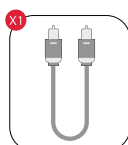
Cavo audio stereo da 3,5 mm a RCA



Cavo stereo da RCA a RCA (6 m)



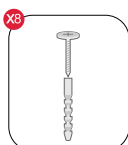
Cavo HDMI



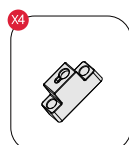
Cavo ottico digitale



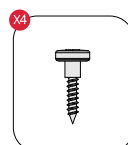
Telecomando



Kit per il montaggio a parete



Staffa a muro

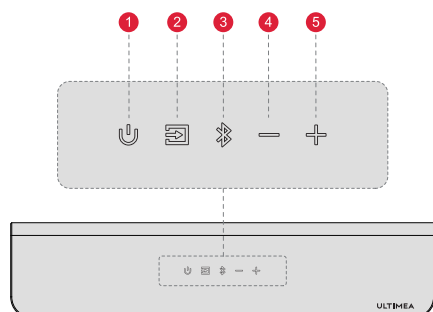


Vite di montaggio sui diffusori



Manuale d'uso

## 2 CONTROLLI DELLA SOUNDBAR

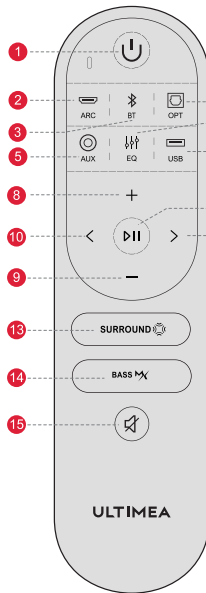


### Pannello di controllo

- 1 "U": Pulsante di accensione**  
Premere per accendere / Tenere premuto per 3 secondi per spegnere.
- 2 "I": Modalità di ingresso**  
Premere per cambiare canale: ARC-OPT(OPTICAL)-BT-AUX-USB.
- 3 "B": Bluetooth**  
Premere per passare al canale BT e accedere alla modalità di accoppiamento. Tenere premuto per 3 secondi per scollegare il dispositivo corrente e scegliere di collegarsi manualmente a un nuovo dispositivo sul cellulare / PC / TV (ID BT: Poseidon D50).
- 4 "−": Volume giù**
- 5 "+": Volume su**

## Telecomando

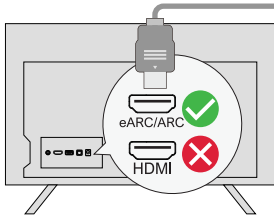
- 1 "U": **Pulsante di accensione**  
Premere per accendere / Tenere premuto per 3 secondi per spegnere.
- 2 "ARC": **ARC**  
Premere per passare al canale HDMI ARC.
- 3 "BT": **BT**  
Premere per passare al canale BT e accedere alla modalità di accoppiamento. Tenere premuto per 3 secondi per scollegare il dispositivo corrente e scegliere di collegarsi manualmente a un nuovo dispositivo sul cellulare / PC / TV (ID BT: Poseidon D50).
- 4 "OPT": **OPT**  
Premere per passare al canale OTTICO.
- 5 "AUX": **AUX**  
Premere per passare al canale AUX.
- 6 "EQ": **EQ**  
Premere per passare alla modalità Film, Dialogo, Musica, il display visualizza: "EQ 1", "EQ 2", "EQ 3".
- 7 "USB": **USB**  
Premere per passare al canale USB.



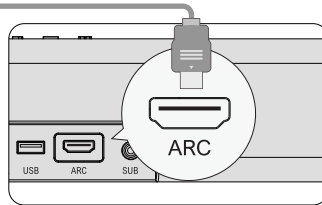
- 8 "+": **Volume su**
- 9 "-": **Volume giù**
- 10 "<": **Precedente**  
Solo per la modalità BT e USB: Passa al brano precedente.
- 11 ">": **Successiva**  
Solo per la modalità BT e USB: Passa al brano successivo.
- 12 "DII": **Riproduzione / Pausa**  
Solo per la modalità BT e USB. Modalità USB: Tenere premuto per 3 secondi per passare dalla riproduzione di un singolo loop alla riproduzione di un elenco di loop.
- 13 "SURROUND": **SURROUND**  
Premere per regolare il livello del suono surround: "5F-1", "5F 0", "5F 1".
- 14 "BASS M": **BASSM™**  
Premere per regolare il livello dei bassi, il display visualizza: "b5-3", "b5-2", "b5-1", "b5 0", "b5 1".
- 15 "Mute/Volume": **Mute / Recupera il volume.**

IT

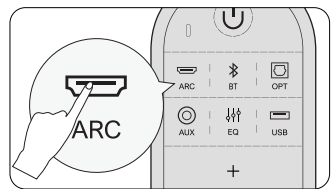
## 3 COLLEGAMENTO ALLA TV VIA ARCO



**Passo 1:**  
Collegare un'estremità del cavo HDMI alla porta eARC / ARC sul retro del televisore.



**Passo 2:**  
Collegare quindi l'altra estremità alla porta ARC della soundbar.



**Passo 3:**  
Premere il pulsante "ARC" sul telecomando per selezionare l'ingresso "ARC".

**Nota: attivare la funzione "CEC" sul televisore.**

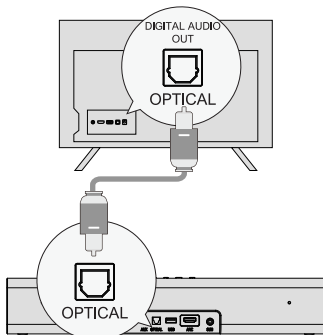
Quando l'ARC è collegato, il telecomando del televisore può controllare contemporaneamente la soundbar e il televisore:

- 1 Accendere/spegnere
- 2 Regolare il volume

**Se non c'è suono: provare a impostare l'uscita audio del televisore su PCM:** Impostazioni TV > Home > Impostazioni > Suono > Uscita audio digitale > PCM

## 4 COLLEGAMENTO ALLA TV VIA OTTICA / AUX

### OTTICO

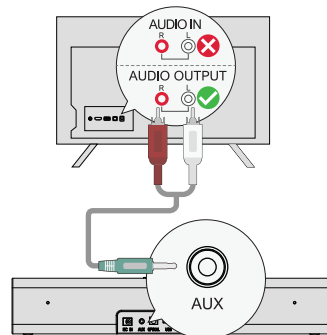


#### OPZIONE 1: OTTICO

- 1 Assicurarsi che la porta del televisore sia OPTICAL OUT, collegare entrambi i lati del cavo a OPTICAL, sia per il televisore che per la soundbar.
- 2 Assicurarsi che la spina ottica sia inserita correttamente come mostrato nell'immagine. Non inserire la spina al contrario e non rompere lottica.

**Nota:** Se l'audio viene riprodotto dagli altoparlanti interni del televisore, disattivare o ridurre al minimo il volume del televisore.

### AUX




#### OPZIONE 2: AUX


- 1 Collegare il cavo audio da 3.5 mm a 3.5 mm alla porta AUDIO OUT del televisore.
- 2 Non supporta la porta AUDIO IN del televisore.

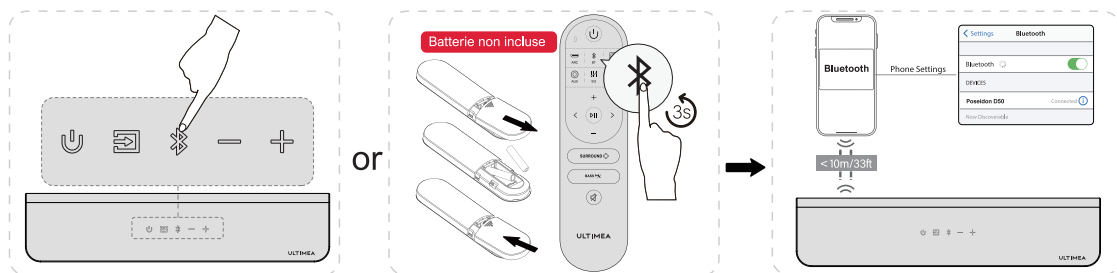
**Nota:** Ricordarsi di scollegare il cavo AUX dal televisore e dalla Soundbar quando si desidera passare a un'altra modalità.

**In modalità ottica: Se non si sente alcun suono, provare a impostare l'uscita audio del televisore su PCM**  
Impostazioni TV > Home > Impostazioni > Audio > Uscita audio digitale > PCM

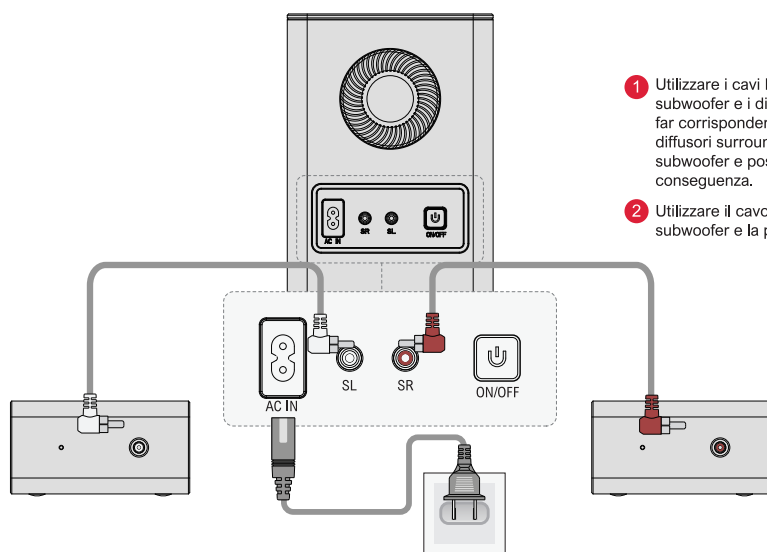
## 5 CONNESSIONE AL BLUETOOTH®

- 1 Premere il pulsante "  " sulla soundbar o sul telecomando per accedere alla modalità di accoppiamento Bluetooth.
- 2 Aprire le impostazioni Bluetooth del telefono, trovare e selezionare "Poseidon D50" per collegare la soundbar.

**Nota:** se è già in modalità Bluetooth e connessa, tenere premuto il pulsante "  " per 3 secondi per scollegare il dispositivo corrente e collegarlo manualmente al nuovo dispositivo sul telefono cellulare / PC / TV.

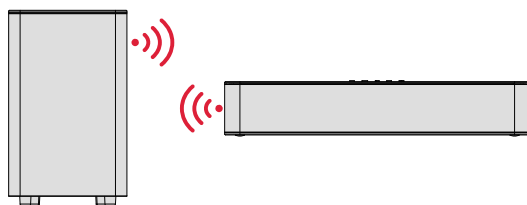


## 6 COLLEGAMENTO AL SUBWOOFER E AI DIFFUSORI SURROUND

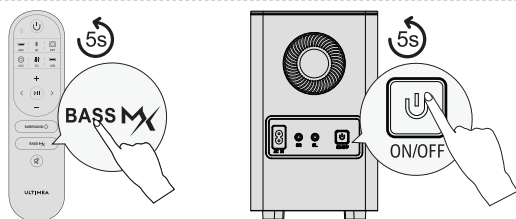


- 1 Utilizzare i cavi RCA-RCA da 6 m per collegare il subwoofer e i diffusori surround; prestare attenzione a far corrispondere le interfacce dello stesso colore dei diffusori surround con quelle corrispondenti del subwoofer e posizionare i diffusori surround di conseguenza.
- 2 Utilizzare il cavo di alimentazione per collegare il subwoofer e la porta di alimentazione.

## 7 ABBINAMENTO DEL SUBWOOFER



Il subwoofer è stato accoppiato alla soundbar da ULTIMEA.  
Se il suono non proviene dal subwoofer, è necessario accoppiare nuovamente la Soundbar con il subwoofer.



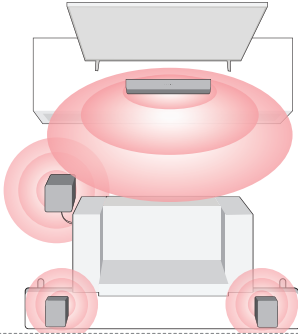
**Passo 1:**  
Tenere premuto il pulsante " BASS MX " sul telecomando per 5 secondi; il display mostrerà "5s" lampeggiante.

**Passo 2:**  
Tenere premuto il pulsante ON/OFF del subwoofer per 5 secondi, il LED bianco lampeggerà velocemente. Il LED bianco sarà sempre acceso quando il subwoofer è stato accoppiato correttamente.

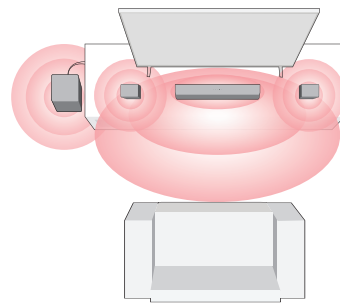
## 8 OPZIONI DI POSIZIONAMENTO

IT

### Surround completo a 360° (Surround migliore)

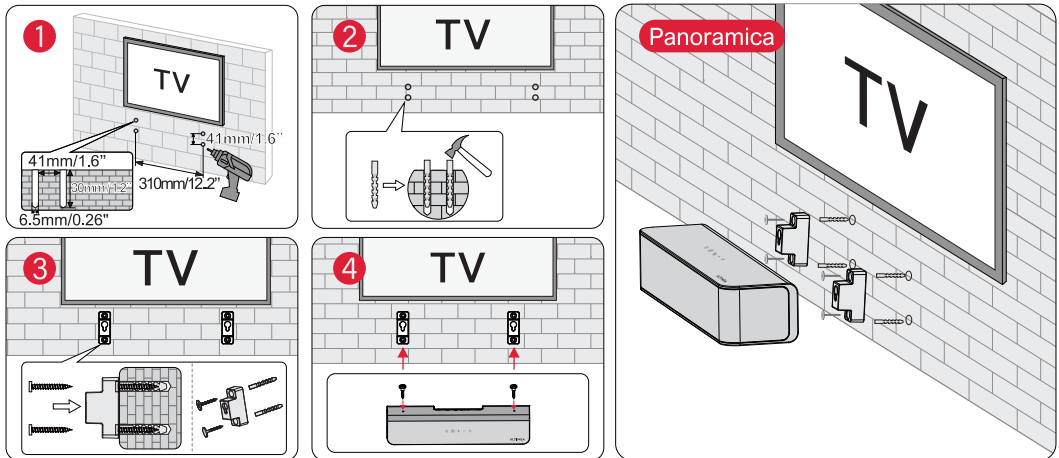


### Surround anteriore



- 1 Per una migliore esperienza di ascolto, scegliere una delle due opzioni di posizionamento mostrate nell'illustrazione precedente in base all'ambiente domestico.
- 2 La soundbar e i diffusori surround devono essere posizionati all'altezza delle orecchie o vicino ad esse.

## 9 INSTALLAZIONE A PARETE



**Nota:** I diffusori surround montati a parete seguono la stessa configurazione mostrata nelle immagini precedenti

## 10 SPECIFICHE

Numero di modello	U2500
Alimentazione	AC 100-240V, ~50/60Hz
Driver della barra audio	2,25" × 3 (barra audio) + 2,25" × 2 (altoparlante surround) + 5,25" (subwoofer)
Risposta in frequenza	40Hz - 18kHz
Potenza in standby	<0,5W
Temperatura di esercizio	0°C - 45°C/32°F - 113°F

Dimensioni e peso	
Soundbar	400(W) × 70(H) × 90(D)mm    15,7" × 2,8" × 3,5"
Subwoofer	155(W) × 244(H) × 215(D)mm    6,1" × 9,6" × 8,5"
Altoparlante surround	135(W) × 70(H) × 90 (D)mm    5,3" × 2,8" × 3,5"
Imballaggio	335(W) × 442(H) × 192(D)mm    13,1" × 17,4" × 7,5"
Peso netto	5,7kg / 12,6lbs
Peso lordo	6,3kg / 13,9lbs

ULTIMEA

Poseidon D50

# Manual del usuario



Número de modelo: U2500

## ESTAMOS LISTOS PARA AYUDAR



support@ultimea.com

### ¿Prefiere un tutorial en vídeo?

Vídeo guía de instalación o MANUAL DE USUARIO en el sitio web de ULTIMEA.

@ultimea\_oficial

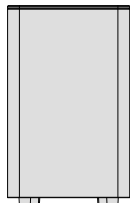


support.ultimea.com

ES

+1 888-598-8875(US) Mon-Fri 9am-5pm(PST)  
+49 89-628-25828(EU) Mon-Fri 9am-5pm(CET)

## 1 LISTA DE ACCESORIOS



Subwoofer



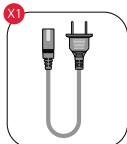
Barra de sonido



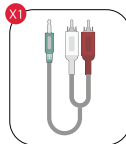
Altavoz surround x 2



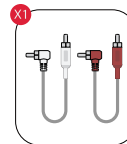
Adaptador de corriente



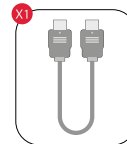
Cable de alimentación del subwoofer



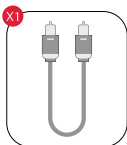
Cable de audio estéreo de 3,5 mm a RCA



Cable estéreo de RCA a RCA (6 m)



Cable HDMI



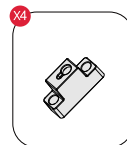
Cable digital óptico



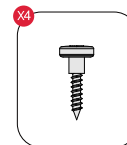
Mando a distancia



Kit de montaje en pared



Soporte de pared

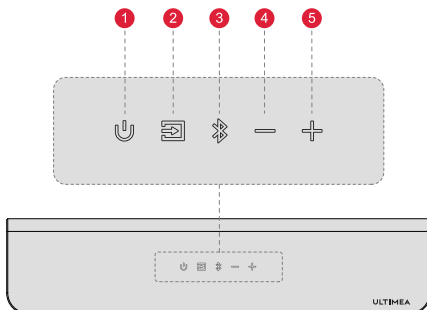


Tornillo de montaje en altavoces



Manual del usuario

## 2 CONTROLES DE LA BARRA DE SONIDO

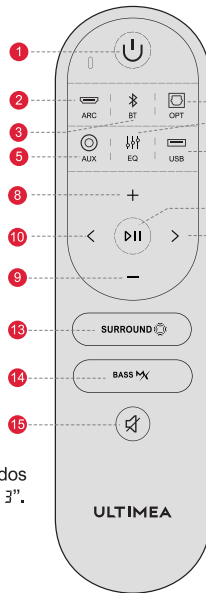


### Panel de control

- 1 "⏻": Botón de encendido**  
Pulse para encender / Mantenga pulsado durante 3 segundos para apagar.
- 2 "📺": Modo de entrada**  
Pulse para cambiar de canal: ARC-OPT(ÓPTICO)-BT-AUX-USB.
- 3 "📶": Bluetooth**  
Pulse para cambiar al canal BT y entrar en el modo de emparejamiento. Mantenga pulsado durante 3 segundos para desconectar el dispositivo actual y elija conectarse a un nuevo dispositivo manualmente en su teléfono móvil / PC / TV (BT ID: Poseidon D50).
- 4 "⏮": Bajar Volumen**
- 5 "⏭": Subir Volumen**

## Mando a distancia

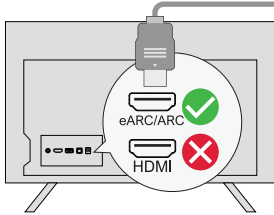
- 1 "⏻": **Botón de encendido**  
Pulse para encender / Mantenga pulsado durante 3 segundos para apagar.
- 2 "ARC": **ARC**  
Pulse para cambiar al canal HDMI ARC.
- 3 "BT": **BT**  
Pulse para cambiar al canal BT y entrar en el modo de emparejamiento. Mantenga pulsado durante 3 segundos para desconectar el dispositivo actual y elija conectar a un nuevo dispositivo manualmente en su teléfono móvil / PC / TV (BT ID: Poseidon D50).
- 4 "OPT": **OPT**  
Pulse para cambiar al canal OPTICAL.
- 5 "AUX": **AUX**  
Pulse para cambiar al canal AUX.
- 6 "EQ": **EQ**  
Pulse este botón para cambiar entre los modos Película, Diálogo y Música: "EQ 1", "EQ 2", "EQ 3".
- 7 "USB": **USB**  
Pulse para cambiar al canal USB.



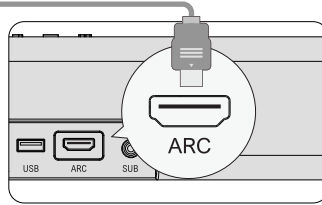
- 8 "+": **Subir volumen**
- 9 "-": **Bajar volumen**
- 10 "<": **Anterior**  
Sólo para los modos BT y USB: Salta a la pista anterior.
- 11 ">": **Siguiente**  
Sólo para los modos BT y USB: Salta a la pista siguiente.
- 12 "▶||": **Reproducir / Pausa**  
Sólo para los modos BT y USB. Modo USB: Mantenga pulsado durante 3 segundos para cambiar entre reproducción de bucle simple y reproducción de bucle de lista.
- 13 "SURROUND": **SURROUND**  
Pulse para ajustar el nivel de sonido envolvente, la pantalla mostrará: "5F-1", "5F 0", "5F 1".
- 14 "BASS MX": **BASSMX™**  
Pulse para ajustar el nivel de graves, la pantalla mostrará: "b5-3", "b5-2", "b5-1", "b5 0", "b5 1".
- 15 "🔊": **Mute / Recuperar el volumen.**

ES

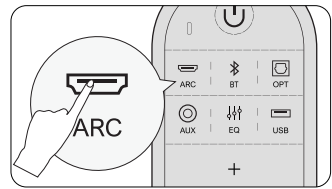
## 3 CONECTAR A TV MEDIANTE ARCO



**Paso 1:**  
Conecte un extremo del cable HDMI al puerto eARC / ARC de la parte posterior de su televisor.



**Paso 2:**  
A continuación, conecte el otro extremo al puerto ARC de la barra de sonido.



**Paso 3:**  
Pulse el botón "ARC" del mando a distancia para seleccionar la entrada "ARC".

**Nota:** Active la función "CEC" en su televisor.

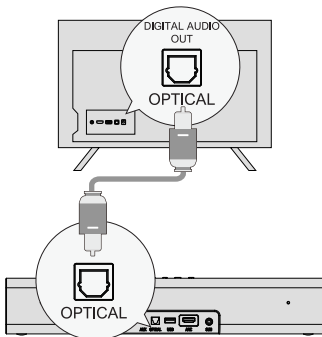
Cuando ARC está conectado, el mando a distancia de su TV puede controlar la barra de sonido y la TV simultáneamente:

- 1 Encender/Apagar
- 2 Ajustar el volumen

**Si no hay sonido:** intente **ajustar la salida de audio del televisor a PCM**: Ajustes TV > Inicio > Ajustes > Sonido > Salida de audio digital > PCM

## 4 CONECTAR AL TELEVISOR POR VÍA ÓPTICA / AUX

### OPCIÓN

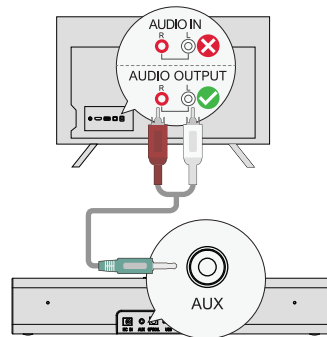


#### OPCIÓN 1: ÓPTICO

- 1 Asegúrese de que el puerto del televisor es OPTICAL OUT, conecte ambos lados del cable a OPTICAL, tanto para el televisor como para la barra de sonido.
- 2 Asegúrese de que el conector óptico está insertado correctamente como se muestra en la imagen. No inserte la clavija al revés y rompa el cable óptico.

**Nota:** Si se reproduce audio por los altavoces internos del televisor, silencie o minimice el volumen del televisor.

### AUX



#### OPCIÓN 2: AUX

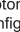
- 1 Conecte el cable de audio de 3.5 mm a 3.5 mm al puerto AUDIO OUT del televisor.
- 2 No es compatible con el puerto AUDIO IN del televisor.

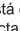
**Nota:** Recuerde desconectar el cable AUX de la TV y del Soundbar cuando quiera cambiar a otro modo.

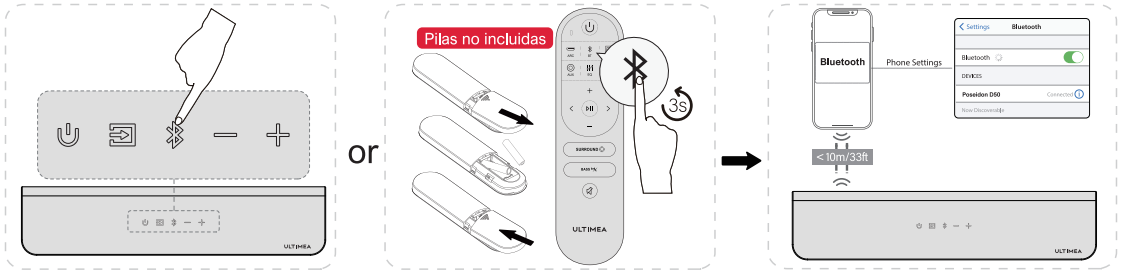
**En Modo Óptico:** Si no hay sonido, pruebe a **ajustar la salida de audio del TV a PCM**: Ajustes TV > Inicio > Ajustes > Sonido > Salida Audio Digital > PCM



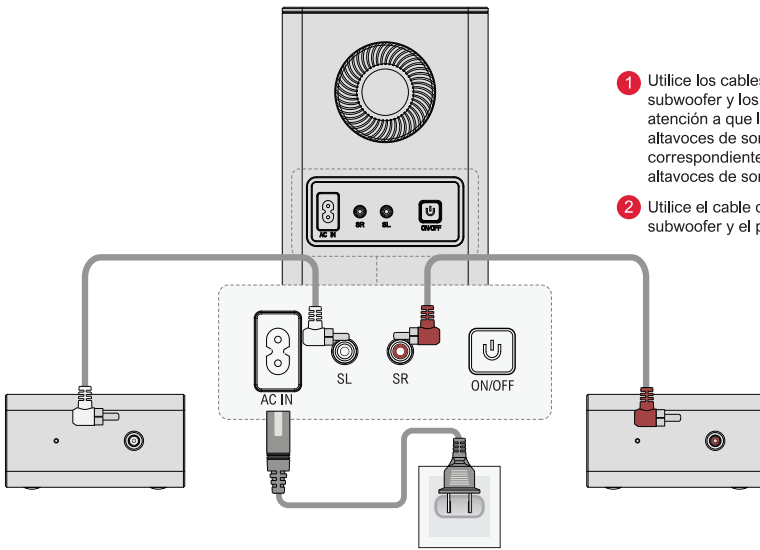
## 5 CONECTAR A BLUETOOTH®

- 1 Pulse el botón "  " en la barra de sonido o en el mando a distancia para entrar en el modo de emparejamiento Bluetooth.
- 2 Abra la configuración de Bluetooth de su teléfono, busque y seleccione "**Poseidon D50**" para conectar la barra de sonido.

**Nota:** Si ya está en el modo Bluetooth y conectado, mantenga pulsado el botón "  " durante 3 segundos para desconectar el dispositivo actual y conectarse al nuevo dispositivo manualmente en su teléfono móvil / PC / TV.

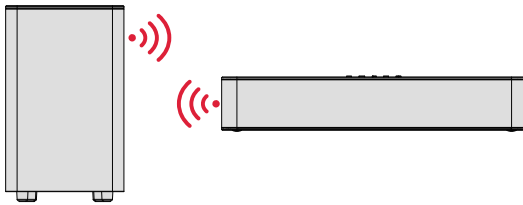


## 6 CONECTAR AL SUBWOOFER Y A LOS ALTAVOCES SURROUND

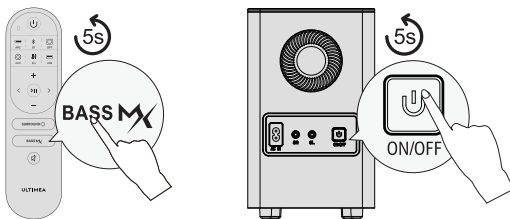



- 1 Utilice los cables RCA-RCA de 6 m para conectar el subwoofer y los altavoces de sonido envolvente; preste atención a que las interfaces del mismo color de los altavoces de sonido envolvente coincidan con las correspondientes del subwoofer y coloque los altavoces de sonido envolvente en consecuencia.
- 2 Utilice el cable de alimentación para conectar el subwoofer y el puerto de alimentación.

## 7 EMPAREJAMIENTO DEL SUBWOOFER



ULTIMEA ha emparejado el subwoofer con la barra de sonido.  
Si el subwoofer no emite sonido, deberá volver a emparejar la barra de sonido con el subwoofer.

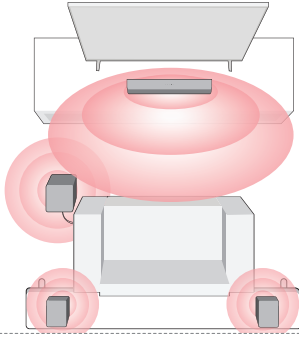


**Paso 1:**  
Tenere premuto el pulsante " BASS  " sul telecomando per 5 secondi; il display mostrerà "5s" lampeggiante.

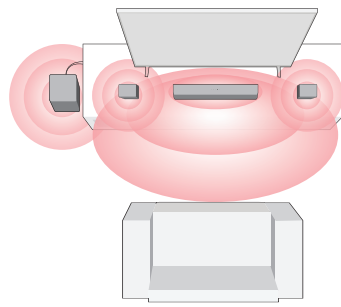
**Paso 2:**  
Mantenga pulsado el botón ON/OFF del subwoofer durante 5 segundos, el LED blanco parpadeará rápidamente. El LED blanco estará siempre encendido cuando el subwoofer se empareje correctamente.

## 8 OPCIONES DE COLOCACIÓN

### Envolvente completo de 360° (mejor envolvente)

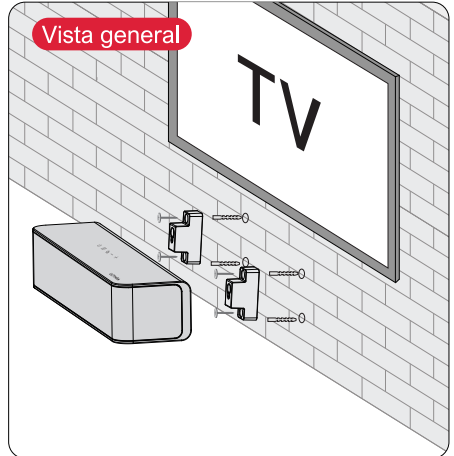
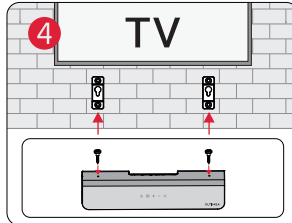
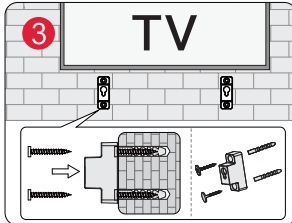
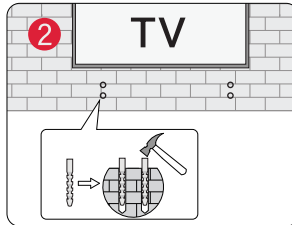
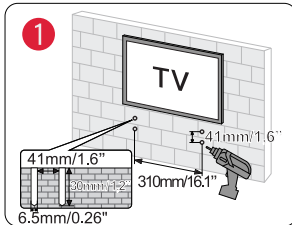


### Envolvente frontal



- 1 Para disfrutar de una mejor experiencia auditiva, elija una de las dos opciones de colocación que se muestran en la ilustración anterior en función del entorno de su hogar.
- 2 La barra de sonido y los altavoces surround deben colocarse a la altura de los oídos o cerca de ellos.

## 9 INSTALACIÓN MURAL



**Nota:** Los altavoces surround de montaje en pared siguen la misma configuración que se muestra en las imágenes anteriores

## 10 ESPECIFICACIONES

Número de modelo	U2500
Fuente de alimentación	AC 100-240V, ~50/60Hz
Controladores de la barra de sonido	2.25" × 3 (barra de sonido) + 2.25" × 2 (altavoz surround) + 5.25" (subwoofer)
Respuesta en frecuencia	40Hz - 18kHz
Potencia en espera	<0.5W
Temperatura de funcionamiento	0°C - 45°C/32°F - 113°F

Dimensiones y peso	
Barra de sonido	400(W) × 70(H) × 90(D)mm    15.7" × 2.8" × 3.5"
Subwoofer	155(W) × 244(H) × 215(D)mm    6.1" × 9.6" × 8.5"
Altavoz surround	135(W) × 70(H) × 90 (D)mm    5.3" × 2.8" × 3.5"
Embalaje	335(W) × 442(H) × 192(D)mm    13.1" × 17.4" × 7.5"
Peso neto	5.7kg / 12.6lbs
Peso bruto	6.3kg / 13.9lbs

## SAFETY INSTRUCTIONS

### Please read this user manual carefully and save it for future reference.

Do not make unauthorized alterations to the product, doing so may compromise safety, regulatory compliance, system performance, and may void the warranty.

- Avoid dropping.
- Do not disassemble.
- Do not submerge in water
- Avoid extreme temperatures.
- Do not use the device outdoors during thunderstorms.
- Use original or certified cables.
- Do not place dangerous items on top of this device (e.g. liquid filled objects, lit candles).
- Clean with a dry, soft lint-free cloth. Do not use any corrosive cleaner or oil.
- To avoid hearing damage, do not listen for extended periods at high volume.
- Do not expose the batteries to extreme heat sources such as direct sunlight or open flames.
- The ideal operating temperature for this product and its accessories is between 41°F/5°C and 95°F/35°C.
- The adapter should be installed near the device and should be easily accessible.
- Do not use this product in environments of extreme heat or cold. Never expose this device to strong sunshine or wet environments.

## PROPER DISPOSAL INSTRUCTIONS



This mark shown on the product or its packaging, indicates that this product should not be disposed of with other household waste at the end of its working life.

To prevent possible harm to the environment or human health from uncontrolled waste disposal, please separate this from other types of wastes and recycle it responsibly to promote the sustainable reuse of material resources.

### Waste Electrical & Electronic Equipment

Household user should contact either the retailer where they purchased this product, or their local government office, for details of where and how they can take this item for environmentally safe recycling.

Business users should contact their suppliers and check the terms and conditions of the purchase contract. This product should not be mixed with other commercial wastes for disposal.

## FCC REGULATORY COMPLIANCE

Any changes or modifications not expressly approved by the party responsible for compliance could void the user's authority to operate the equipment.

This device complies with Part 15 of the FCC Rules.

Operation is subject to the following two conditions:

- (1) This device may not cause harmful interference.
- (2) This device must accept any interference received, including interference that may cause undesired operation.

NOTE: This equipment has been tested and found to comply with the limits for a Class B digital device, pursuant to part 15 of the FCC Rules. These limits are designed to provide reasonable protection against harmful interference in a residential installation. This equipment generates, uses, and can radiate radio frequency energy, and if not installed and used in accordance with the instructions, may cause harmful interference to radio communications.

However, there is no guarantee that interference will not occur in a particular installation. If this equipment does cause harmful interference to radio or television reception, which can be determined by turning the equipment off and on, the user is encouraged to try to correct the interference by one or more of the following measures:

- Reorient or relocate the receiving antenna.
- Increase the separation between the equipment and the receiver.
- Connect the equipment to an outlet on a circuit different from that to which the receiver is connected.
- Consult the dealer or an experienced radio / TV technician for help.

This equipment complies with FCC radiation exposure limits set forth for an uncontrolled environment. This equipment should be installed and operated with a minimum distance of 20cm between the radiator & your body. This transmitter must not be co-located or operating in conjunction with any other antenna or transmitter.

## ISED WARNINGS

This device contains licence-exempt transmitter (s) / receiver (s) that comply with Innovation, Science and Economic Development Canada's licence-exempt RSS (s). Operation is subject to the following two conditions:

- (1) This device may not cause interference.
- (2) This device must accept any interference, including interference that may cause undesired operation of the device.

L'émetteur/récepteur exempt de licence contenu dans le présent appareil est conforme aux CNR d'Innovation, Sciences et Développement économique Canada applicables aux appareils radio exempts de licence. L'exploitation est autorisée aux deux conditions suivantes:

- (1) L'appareil ne doit pas produire de brouillage;
- (2) L'appareil doit accepter tout brouillage radioélectrique subi, même si le brouillage est susceptible d'en compromettre le fonctionnement.

The device meets the exemption from the routine evaluation limits in section 2.5 of RSS 102 and compliance with RSS-102 RF exposure, users can obtain Canadian information on RF exposure and compliance.

Le dispositif rencontre l'exemption des limites courantes d'évaluation dans la section 2.5 de RSS 102 et la conformité à l'exposition de RSS-102 rf, utilisateurs peut obtenir l'information canadienne sur l'exposition et la conformité de rf.

This transmitter must not be co-located or operating in conjunction with any other antenna or transmitter. This equipment should be installed and operated with a minimum distance of 20 centimeters between the radiator and your body.

Cet émetteur ne doit pas être Co-placé ou ne fonctionnant en même temps qu'aucune autre antenne ou émetteur. Cet équipement devrait être installé et actionné avec une distance minimum de 20 centimètres entre le radiateur et votre corps.

## Declaration of Conformity

We (Manufacturer is responsible for this declaration)  
Dynamec (Shenzhen) Technology Limited  
(Company name)

20th Floor, Building 4, Tianan Cloud Park, Bantian St.,  
Longgang District Shenzhen, China 518000  
(Company address)

Declare under our sole responsibility that the product  
Trade Mark: ULTIMEA  
Product Name: Poseidon D50 5.1 Channel Virtual  
Surround Soundbar  
Model No.: U2500

To which this declaration relates is in conformity with  
the essential requirement set out in the Council Directive  
on the Approximation of the laws of the Member States  
relating to RED Directive (2014/53/EU) & RoHS (2011/  
65/EU) product is responsible to affix CE marking, the  
following standards were applied:

EN 55032:2015/A11:2020  
EN 55035:2017/A11:2020  
ENIEC 61000-3-2:2021  
EN 61000-3-3:2013/A1:2021  
ETSI EN 301 489-1 V2.2.3(2019-11)  
ETSI EN 301 489-17 V3.2.4(2020-09)  
EN 300 328 V2.2.2(2019-07)  
EN 50663:2017  
ENIEC 62368-1:2020+A11:2020  
IEC62321-3-1:2013  
IEC 62321-4:2013+A1:2017  
IEC 62321-5:2013  
IEC 62321-6:2015  
IEC 62321-7-1:2015  
IEC 62321-7-2:2017  
IEC 62321-8:2017

Full Name: Yoyo.Yu

Position: Approbation Manager

Signature: 

Place/Date: Shenzhen,China/Dec.25-2022

Trade Marks:



The Bluetooth® word mark and logos are registered trademarks owned by Bluetooth SIG, Inc. and any use of such marks by Soundlab Technology Co.,Ltd. is under license. Other trademarks and trade names are those of their respective owners.



The Adopted Trademarks HDMI, HDMI High-Definition Multimedia Interface, HDMI trade dress and the HDMI Logos are trademarks or registered trademarks of HDMI Licensing Administrator, Inc. in the United States and other.

# ULTIMEA

Poseidon D50 5.1 Channel Virtual Surround Soundbar  
Model No.: U2500

 Dynamec GmbH  
Buchenring 57, 22359 Hamburg, Germany

 UK Crossborder Limited  
7 Bell Yard London WC2A 2JR, UK United Kingdom

Made in China

Manufacturer: Dynamec (Shenzhen) Technology Limited  
Address: 20th Floor, Building 4, Tianan Cloud Park, Bantian St.,  
Longgang District, Shenzhen, China 518000

If you need our support, kindly reach out to our  
service team. We are always glad to help.

+1 888-598-8875 (US)

 Mon-Fri 9am-5pm (PST)

+49 89-628-25828 (EU)

Mon-Fri 9am-5pm (CET)

 [support@ultimea.com](mailto:support@ultimea.com)

[support@ultimea.de](mailto:support@ultimea.de)

 [support.ultimea.com](http://support.ultimea.com)

 [support.ultimea.de](http://support.ultimea.de)



@ultimea\_official