

Magnetic+ Portable Dual Wireless Speakers



User's Guide for Model ISB2133 v3120-01

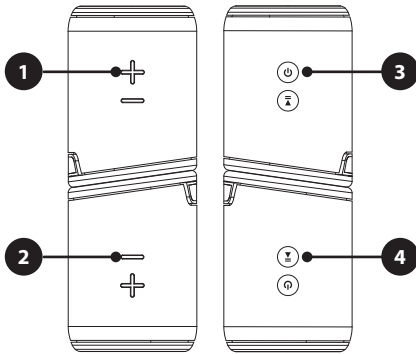
Features

- Bluetooth wireless 5.0: range 60 ft.
- Built-in rechargeable battery: approximately 10 hours of playtime at 50% volume
- USB-C port for battery recharge

Includes

- User's Guide
- 2x USB-C to USB charging cables
- Silicone case

Controls



1. **Volume+/Next:** Press to increase volume level. Press and hold to play the next track.
2. **Volume-/Previous:** Press to decrease volume level. Press and hold to play previous track.
3. **Power:** Press and hold to power on/off. Press twice to turn voice prompts on/off.
4. **Play/Pause/Pair:** While playing music, press to play/pause tracks. Press and hold for 3 seconds to pair Bluetooth device manually. Press twice to pair TWS manually.

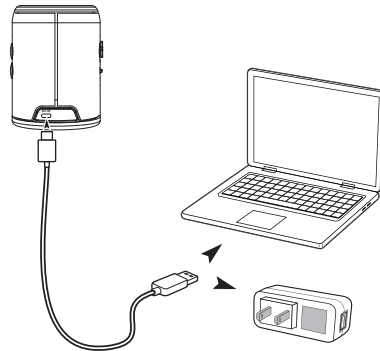
Note: The **Charging LED indicator** is behind the **Power** button. The **Bluetooth LED indicator** is behind the **Play/Pause/Pair** button.

Charging the Battery

To charge the internal battery, plug the **USB-C charging cable** into the USB-C charging port on the speaker and a powered-on computer or USB power adapter (not included) and standard power outlet. Charging time is approximately 4 hours.

While the unit is charging the **Charging LED Indicator** will turn **red**. When the unit is finished charging, the **Charging LED Indicator** will turn **off**.

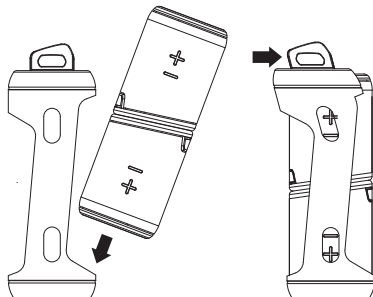
Both speakers must be charged individually.



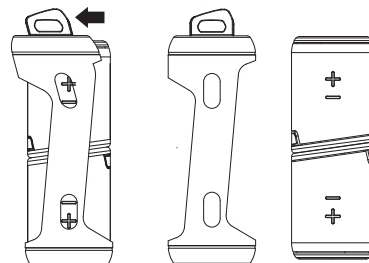
Using and Removing the Silicone Case

Insert and remove the stacked magnetic speakers by following the diagram below.

Insert



Remove



Pairing & Playing Bluetooth Audio

The host speaker can be used individually to play Bluetooth audio. When trying to use the secondary speaker alone, the **Bluetooth LED Indicator** on the speaker will continue flashing and the speaker name will not show up in the Bluetooth Settings.

1. When first powered on, the speaker defaults to Bluetooth Mode and is ready to pair automatically. The **Bluetooth LED Indicator** will start flashing, indicating the speaker is ready to pair. When pairing, remain within 3 feet of the Bluetooth device.
2. Using the controls on your Bluetooth device, select **ISB2133** in the Bluetooth Settings to pair. If need be, refer to the user's manual for your specific device for more information.
3. When successfully paired, a voice will announce, "Bluetooth connected." Your Bluetooth device will now be heard through the speaker.
4. Use the controls on the connected Bluetooth device to select and play audio. Use the speaker controls or the connected Bluetooth device to play, pause, and adjust the volume level.
5. After initial pairing, the speaker will automatically connect to the last Bluetooth device.

Note: If your device should become unpaired or you find it is unable to connect, press and hold the **Play/Pause/Pair** button to enter to Pairing Mode. A voice will announce, "Bluetooth is connecting," and you can connect to the speaker manually.

Pairing the Speakers Together (TWS)

1. Power on both speakers. The **Bluetooth LED Indicator** should start flashing on both.
2. After a few seconds, both speakers will pair together and a voice will announce, "Bluetooth connected." The **Bluetooth LED Indicators** on both speakers will turn solid blue.
3. Connect the host speaker to Bluetooth by following the Bluetooth pairing steps for a single speaker. Both speakers will play audio from the device connected to the host speaker.

Note: After turning on both speakers they should pair together automatically. If they do not pair automatically, disconnect or turn off any Bluetooth devices and press the **Play/Pause/Pair** button twice to manually pair them.

Customer Support

Customer Service: 1-888-999-4215 | **Email Support:** prodinfo@dpiinc.com | **Email Parts:** partsinfo@dpiinc.com

For Warranty Information and the most up-to-date version of this User's Guide, go to www.iLiveElectronics.com

To download this User's Guide in English, Spanish, or French, or to get answers to frequently asked questions, visit the support section at: www.iLiveElectronics.com

Para descargar este Manual del Usuario en inglés, español y francés, o para obtener respuestas a preguntas frecuentes, visite la sección de apoyo en: www.iLiveElectronics.com

Pour télécharger ce guide de l'utilisateur en anglais, espagnol ou français, ou pour obtenir des réponses à des questions fréquemment posées, consultez la rubrique d'assistance sur: www.iLiveElectronics.com



Copyright © 2023 Digital Products International (DPI, Inc.) All other trademarks appearing herein are the property of their respective owners. Specifications are subject to change without notice.

Additional Warnings

- **WARNING:** To prevent fire or shock hazards, do not expose this unit to rain or moisture.
- **WARNING:** Where the mains plug or appliance coupler is used as the disconnect device, such disconnect device shall remain readily operable.
- Lithium batteries, like all rechargeable batteries, are recyclable and should be recycled or disposed of according to state and local guidelines. They should never be disposed of in normal household waste, and they should never be incinerated, as they might explode. Contact your local government for disposal or recycling practices in your area.



WARNING: This product can expose you to chemicals including lead, which is known to the State of California to cause cancer and birth defects or other reproductive harm. For more information go to www.P65Warnings.ca.gov. This product meets and complies with required Federal product guidelines.