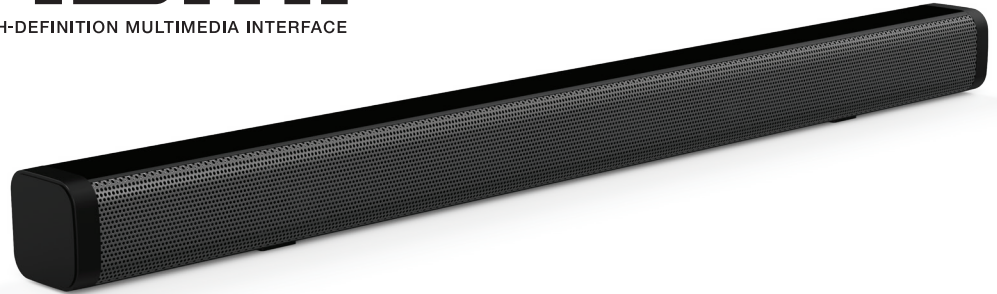




# SC-1420SB

# 30" OPTICAL BLUETOOTH SOUNDBAR WITH DUAL AUX INPUTS

**Bluetooth**  
**HDMI**  
HIGH-DEFINITION MULTIMEDIA INTERFACE



Optical | Dual AUX

## BATTERY DETAILS

Battery Type:	<b>NO BATTERY</b>
Battery Voltage (Volts):	-
Battery Capacity (mAh):	-
Number of Battery Cells:	-
Energy Content (Watt Hours):	-
Weight of Battery (grams):	-

Remote Battery: 2x AAA (not included)

## PRODUCT DETAILS:

Black Unit UPC: 639131214200  
Black Master UPC: 10639131214207

Unit Dimensions (in): 30.7 x 2.36 x 2.4  
Unit Weight (lbs): 2.4

Giftbox Dimensions (in): 34.0 x 5.27 x 4.0  
Giftbox Weight (lbs): 4.4

Inner Carton Dimensions: NO INNER  
Inner Carton Weight: NO INNER

Master Dimensions(in): 34.7 x 8.66 x 11.57  
Master Weight (lbs): 17.6  
Master Case QTY: 4

### Units per Pallet

48"(L) x 40"(W) x **72"**(H) =  
48"(L) x 40"(W) x **84"**(H) =  
48"(L) x 40"(W) x **96"**(H) =  
48"(L) x 40"(W) x **110"**(H) =

### Units per Container

20' = 1830  
40' = 3800  
40'HQ = 4300  
45' = 5300

Features and specifications, measurements and weight may be subject to change without prior notice

## FEATURES & SPECIFICATIONS:

- 2.0 Channel Soundbar
- Built-In Bluetooth® 5.0 Receiver Allows You to Wirelessly Connect to Your Bluetooth® Enabled Devices
- Bluetooth® Range Up to 10M
- Select from 5 Pre-Set EQ modes
- Dual 3.5mm Aux Inputs for external audio devices
- 2.5" low-profile Fits in most spaces and can be placed in front of your TV without blocking your TV's screen.
- Connect the soundbar to your TV or other devices with HDMI cable or via the optical input
- Driver Unit: 2" x 2
- Frequency Response: 2402~2480 MHz
- Input impedance: 8Ω
- S/N Ratio: ≥ 70dB
- Power Output: 12W x 2
- Power: DC 18V1.3A
- Power Supply: AC Operated (AC 110V-240V/50/60Hz)
- Max RF output power (e.i.r.p.): 1.08 dBm
- Connectivity: Bluetooth®, AUX, Optical, HDMI ARC



Accessories: Power Adapter, AUX Cable, Remote Control and Manual

**WARNING:** This product can expose you to chemicals including lead, which is known to the State of California to cause cancer and birth defects or other reproductive harm. For more information, go to [www.P65Warnings.ca.gov](http://www.P65Warnings.ca.gov)

[www.supersonicinc.com](http://www.supersonicinc.com)

01/20/2023